

THE AREA MAGAZINE FOR LEWDOWN, CHILLATON, CORYTON,
STOWFORD, MARYSTOWE, THRUSHELTON, LEWTRENCHARD

October 2018

The magazine for all that's going on in your area

Community



Newslink

PUBLISHED BY THE LEWDOWN RESIDENTS ASSOCIATION,
REG. CHARITY NO. 1071808

FUNDED BY THE ADVERTISERS, SPONSORS, MEMBERSHIPS AND AREA CHURCHES
ALSO SUPPORTED BY GRANTS FROM DEVON COMMUNITY FOUNDATION AND
LLOYDS TSB FOUNDATION FOR ENGLAND & WALES

Working in partnership with St Luke's Hospice, Plymouth

Brentor & Moor Compassionate Neighbours

is a West Devon scheme designed to help support individuals at home in our local communities who are suffering from a life-limiting illness or approaching the end of life.

The service covers an area within a radius of about ten miles of Tavistock, from Lifton/Lewdown in the north, to Princetown in the east, down as far as Bere Ferrers to the south, and across to the Cornish border in the west.

Subject to assessment and service capacity, BMCN can provide a volunteer who will visit, normally on a weekly basis for up to 2 hours, to offer general support and advocacy (but not household chores or personal care) to both the individual and their carer, as well as acting as an extra pair of "eyes and ears", thus helping to avert crisis/hospital admission. All volunteers are trained and DBS checked.

To make a referral, or if you are considering volunteering, please contact the BMCN Co-ordinator, Mark Alderson on 01822 860799. Further information can be found at www.bmcneighbours.org

Patron: Sir Ranulph Fiennes OBE



Lewdown

It is located in the roadside porch of the Blue Lion (EX20 4DL)

Chillaton

Located in the Village Square on the wall of No. 1 Barn Cottages

Please note it is not recognised by 999 calls if more than 200 meters away from it.

When ringing 999 they will access code to open box.

The Community Newslink

A MONTHLY MAGAZINE PROVIDING NEWS, INFORMATION AND ITEMS OF INTEREST FOR THE AREAS OF LEWDOWN, CHILLATON, CORYTON, STOWFORD AND MARYSTOWWE, THRUSHELTON, LEWTRENCHARD

Established January 1999
Issue No. 220 October 2018

Editor

Andrew McCarthy

**3 Reddicliffe Mews, Lewdown, Devon. EX20 4BQ
Telephone 01566 783093 E-Mail mccarthy.andy@gmail.com**

Production, Distribution and Delivery Helpers.

Mrs C. Bickell, Mrs Martin, Mr. T. Nash, Mrs R. Squires,
Mrs A. Westlake, Mrs M. Rolfe, Terry Southcott,
Coppers Stores, Keith Turner and Ryan and Jessica Kingdom

All news, photographs, reports, events etc. for the Newslink need to be handed in to the Editor by 15th of the preceding month.

We welcome your articles / items / advertisements. Though we do our best, we cannot guarantee to publish all that is sent to us, as some things will not reproduce in a good enough quality.

DONATIONS TOWARD THE COST OF PUBLISHING THIS MAGAZINE CAN BE GIVEN TO ANY COMMITTEE MEMBER OR CONTACT:

LRA CHAIRMAN: TIM NASH (TIMNASH682@BTINTERNET.COM)
LRA TREASURER: SARAH NASH (SARAHNASH@BTINTERNET.COM)

YOUR SUPPORT WOULD BE VERY MUCH APPRECIATED

☆☆

★ **Could you help with delivering the Newslink?** ★

★ We always welcome new volunteers to join our excellent team of ★
★ helpers that deliver the Newslink every month. If you're interested ★
★ please to contact us (details on page 3) ★

★ **Don't forget that you can always get copies of the Link** ★
★ **in the Village Shops and in the local Churches, or** ★
★ **register with us to be sent the PDF version** ★
★ **(send an email to us at Lewdownra@gmail.com)** ★

☆☆

Cover Picture - Highland Cattle on Dartmoor (Courtesy of Tracey Weymouth)



Lew Trenchard Primary School



Monday to Friday 9.15am to 3.30pm
2-5 year olds

Please phone for availability.

Early Years Foundation Unit with plenty of safe outdoor space.
We accept 2gether funding for 2 year olds and Early Years Education
funding for 3 year olds.

Baby / Toddler Session

Monday mornings 9.15am to 11.15am

Justine welcomes you to come and join her in the school hall for lots
of fun activities (some messy) and plenty of singing. A great
opportunity to meet other parents / carers.

£2.00 per session – please bring your own snack.

For more information contact the school office on 01566 783273.

www.lewtrenchardschool.org.uk Email lewtrenchardadmin@andaras

PRINTING

This service is available for a minimum of 50 copies at a
charge of 5p per single copy or 7p per double sided copy.

FOR SALE COPIER PAPER

£3.30 per ream

The Community Newlink purchases its paper in bulk and as such is able to
access competitively priced materials. We can currently offer our readers
copier paper for the special price of £3.30 per ream, a vast saving on High
Street prices. We recommend you phone to check availability and arrange
a convenient time to collect.

Please Contact: **Terry Southcott, Fairview Bungalow, Lewdown**
Phone 01566 783079.

All proceeds will go to The Lewdown Residents Association
and The Community Newlink.

Soupa Troopers

All welcome to this community event



2018

Wednesday October 10th

When we will be joined by the Wool Project



Wednesday November 14th

Wednesday December 12th

From 12.30pm in Lewdown Victory Hall

Soup and a Bread Roll, Tea or Coffee - £3



Followed by conversation & games

(Optional)

**LEWDOWN VICTORY HALL
MONTHLY WHIST DRIVE
Saturday 13th Oct at 8.00pm
Held on the 2nd Saturday each month**

Lewdown Flower Show

Vegetable entries were up this year in spite of the hot weather, especially beetroots, but we were down on the children's entries. We have been given a few ideas from the children for next year.

CUP WINNERS:

W.I. Cup	Marion Lethbridge	Y.F.	Megan Nash, Becky Dennis
Most points in Cookery, Handicraft, Floral N			Nicola Nash
Cookery	Sarah Nash		
Under 5	William, Ceanna, Brendan		
5/8 years	Isla Stacey	12/18 years	Rosie Metherell
Handicraft	Trudy Owen, Jenny Plowman		
Floral Art	Nicola Nash	Photography	Nicola Nash
Local Class, Best Exhibit	Becky Dennis—Tomatoes		
Most points in show	Andy Nash, B. J. Wonnacott		
Mens Cookery	Bob Holland		
Most points in Flower Class B.	Pat Andrews		
Most points in local class	Eileen Worth		
Jim Nash Memorial Cup	Bob Holland		

Pat Andrews, Secretary, Lewdown Flower Show



Doors Staircases

Conservatories,

Kitchens Cut roofs

Windows Sash windows External bi-fold doors

Machining service available.

Bespoke joinery for completely unique pieces.

Steve Hunt

01566 783228

07974 799062

www.shjoinery.com

Lew Trenchard School Big Breakfast

Saturday 13th October 2018

9am – 12pm

Raising money for school funds and Cancer Research



(Vegetarian option available)

At Lewdown Victory Hall

Cake Stall

Everyone welcome

*St Peter's Church, Lewtrenchard
Festive Supper and Song Evening*

Friday December 7th 2018

7 for 7.30pm

Lewdown Victory Hall



Tickets £12.50

Tel: 01566 783127

Lewdown Victory Hall

Bookings contact Esme or Roy Stacey

On 01566 783267

The Blue Lion, Lewdown

Charlie, Nicky, Charlotte, Georgia, Jonty & Alfie
Welcome you to our Family Friendly Pub

For upcoming live events please see
noticeboard or our Facebook Pages

Food is now being served Friday and
Saturday evenings, and Sunday Lunch

Now Available - B&B!!



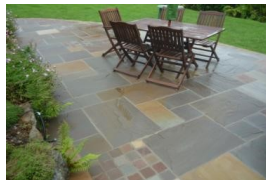
Pool - Darts - Skittles - Sky Sports

01566 783238

*For upcoming live music & quizzes etc follow us on Facebook
Search for 'blue lion inn'*

MARKSTONE GRANITE

For all your Renovation, Conversion and Landscaping needs!



Slate: Flooring, Sills & Hearths. **Reclaimed Bricks**

Granite: Building Materials & Garden Features.

Oak: Beams, Natural Curved Lintels, **Oak Barrels.**

Natural Stone Paving, Sleepers, and lots more!

In our showroom: Local Pottery & Paintings. Rustic Oak Fire surrounds, Coffee Tables, Benches & chopping boards handcrafted in our workshop.

Tel. 01566 784289

www.markstonegranite.co.uk

Lewdown YFC
Cider and Pasty Quiz
Friday 5th October
At Lewdown Victory Hall

7.30pm start

Teams of up to 6

£5 a person, to include pasty and first
drink

To book a team contact Becky -07415064989



All proceeds going to a
local charity tbc



Caroline Harris MIA B

Owner & Bookkeeper

Tel: 01566 783 502

Mob: 07866 953 708

cmhbookkeeping@btinternet.com

www.cmhbookkeeping.co.uk

- + Bookkeeping
- + Self Assessments
- + Accounts Preparation
- + VAT Returns

DOMESTIC HELP

Traditional help around the home,
Help with cooking a meal, baking
and light gardening.

self employed

Food safety and hygiene cert
catering level two

Allergy awareness training

Insured

Tel 01566 783514

email
laurrainebennett@outlook.com

fb/BakingUPCompany

Ian Smith Photography
Landscape

Portrait

Panoramic Landscapes

01566 779348

07768 312371

www.iansmithpanoramics.co.uk
email. smithian840@gmail.com



Evans Plumbing and Heating

Based in Lydford Robbie Evans is your local Plumbing and Heating Engineer

- Installations of Boilers
- Servicing, Maintenance and Repairs
- Central Heating Systems
- Bathrooms and Kitchens
- Blocked Drains and Burst Pipes
- 24hr Call Outs
- FREE No Obligation Quotes

01822 820884
or 07794053150

evansplumbingandheating@outlook.com



Stowford Parish Hall Hire Charges 2018

£3 per hour (Special rates for users of over 30 weeks per year £2 per hour)

Parties, Wedding, Funerals £20

General and Euro Elections £120

Tables £2 each (plus £20 Deposit) Any number of Chairs 25p each

Contact Julie Chick on 01566 783223 for bookings and enquiries

Lewdown Grouped Parish Neighbourhood Plan

The parish council would like to inform parishioners that efforts to encourage a Neighbourhood Plan will cease. Over these last 18 months, with the assistance of Jacqui Wolstenholm the parish council has encouraged a residents group to form and create a Neighbourhood Plan, without success.

Currently the development of the local area is determined by West Devon council and enacted through the Local Plan. In contrast a Neighbourhood Plan is developed by residents and carries legal weight with statutory adoption within the development plan. A Parish Council is not permitted to operate such a plan, it can only initiate one. The matter can, in theory be re-opened by request of residents if within statutory limitations.

The council would like to thank Jacqui for her perseverance.

Japanese Knotweed

Japanese Knotweed (*Fallopia japonica*) is a fast growing and strong clump forming perennial with deeply-penetrating rhizomes. It's not illegal to have on your land but you should control it to prevent it becoming a problem to your neighbours. .

Cutting will not kill it and if it's cut down, allow to dry and burn (do not put in household waste as it's a controlled waste) it usually takes about 3 to 4 seasons with glyphosate weedkiller to kill it, stronger glyphosate will halve this time. Be aware that the use of agricultural strength Glyphosate weedkillers is reserved to licensed & trained operators. This product is currently under official scrutiny,so may not be available later when you have to deal with the problem. on your own property There is currently no satisfactory alternative.

At present no government organisation is prepared to accept responsibility including DCC, they will only deal with highway verges.

The weed has the unfortunate habit of migrating along ditches and culverts! This of course is highly unsatisfactory but we will have to be patient for legislation to catch up.

If you have particularly urgent concerns regarding this worrying problem, there are commercial companies that offer guaranteed solutions but be warned that it can be a frighteningly expensive answer to eradication.

If you know of locations where the weed exists please tell the Parish Council so that we can at least create a map for use when the time comes for positive eradication procedures by the county or borough councils.

Cllr Tom Andrews,

Dear Readers, Well the nights are drawing in so i should have more time to think of something intelligent to say, unfortunately if there is nothing in there in the first place well i would not get your hopes up to much. Sad news everyone. I have been diagnosed with a chronic fear of giants, It's called feefiphobia.

Well once again i was robbed in the men's cookery at the produce show. It seems if you have to much icing left over after doing the sponge filling, on no account should you decorate the sides of the sponge as your esteemed chairperson did.it might look pretty but this technically makes it a cake, so my effort was disqualified, fortunately i forgot to hide the five pound note in it anyway, so nothing lost The accolade of winning this years bragging rights goes to Bob Holland, congratulation to him. also to all the other people who entered and won in what was a difficult year in the garden. PS the present Mrs Nash done rather well.

She has more reasons than this to be excited for after 31 years of marriage and two children we are getting central heating, the ex miss Nash isn't to impressed though, but she has some one to keep her warm now, poor man. Will end now so you can get on with something important like fleaing the cat, or descaling the kettle. Best wishes from the best chairperson you have It's only me Tim Nash.

This has taken a lot longer than usual as the cricket and rugby highlights are on the telly.

I've been training my dog to bring me french red wine. She's a Bordeaux Collie.

I bought a dog from a blacksmith recently. As soon as it got home it made a bolt for the door.

CANNON BARN PODIATRY & FOOT PAIN CLINIC

Specialists in Lower Limb Musculoskeletal Conditions including:
Heel Pain | Plantar Fasciitis | Achilles Tendonopathy | Mortons Neuroma

SWISS DOLORCLAST RADIAL SHOCKWAVE THERAPY CLINIC

General Chiropody & Podiatry Patients very welcome.

Helping you walk towards pain free...

Call: 07946 473972

www.cannonbarnpodiatry.co.uk

1 Cannon Barn Cottages | Lewdown | Nr Okehampton EX20 4BQ



Lewdown Grouped Parish Council

Coryton, Lewtrenchard, Marystow and Thrustelton

Minutes of Ordinary Meeting held at Lewdown Victory Hall

Held on Thursday 30th August 2018

Air Ambulance Landing Site: The parishes have raised £2000 in total leaving a balance of £769.80 to be raised. The September Newslink advises donations to be sent to the clerk. L.G.P.C. to ensure maintenance of the mast is adhered to to manufactures specifications including training (this may apply to the cleaning of the glass or replacement light bulbs). The landing site could be ready for service from Friday 7th September.

Planning app. Ref – 1199/18/OPA – Residential development to include demolition of existing building at Jethro’s Lewdown. Council decision – support.

Planning app. Ref – 2013/18/FUL – Demolition of existing porch and erection of replacement porch at The Old Vicarage, Chillaton. Council decision – support

Planning app. Ref – 2014/18/LBC - Listed building consent for demolition of existing porch and erection of replacement porch at The Old Vicarage, Chillaton. Council decision – support

Planning app. Ref – 2710/18/TPO - Works to T.P.O. tree at No 1 The Wye, Road to Lewtrenchard. W.D.B.C. decision – Grant exemption.

Correspondence –W.D.B.C. requested information relating to OSSR contributions for play equipment these included the following:- Location – It was resolved that the land known as the “Ramps” is the preferred site for a play area. Ownership of land - Parish Council. Available funds – There are currently no funds ring-fenced for the play area. Available funds are dependent on local fund raising which is on-going by the parish council. Play ground equipment manufacturers – Two tenders received, one for £22,576 and the second preferred manufacturer £26,162.55. Potential improvements to existing facilities – Improvements to Village Hall including – Electric curtain for amateur dramatics society, and curtaining to improve it as a sports facility. Sports field equipment and improvements are on-going and funds for this would be useful.

Date, place and time of next ordinary meeting 24th Sept. Lewdown, Victory Hall, Lewdown at 7.30pm.

Report on Lewdown yfc for the year...

We started off the new yfc year in September with a bang as 3 of our members (Becky Dennis, Holly Pearce and Stacey Weeks) took part in a speaking competition 'call my bluff' for the first time in years and they won with Becky being asked to represent the group at county level!

Later in September we had our new members evening with 5 new members joining which brings our total to just under 50 members.

We then had our annual bowling trip to Trethorne in early October with 30 members going, where bowling is free for our new members.

In October aswell we held our annual cider and pasty quiz raising over £500 for our two chosen charities epilepsy uk and children's hospice sw. Our new charities for the year were Devon air ambulance and the Lewdown Helipad. It was then carnival time where we took prizes at Okehampton and Hatherleigh with our themed carnival float 'The Wild West' which was well supported by members.

In November was our group (Tarka) dinner and dance where we took 28 members to. We picked up 4 awards including member of the year and 2nd in rally last year, although im surprised we didn't get one for the noisiest club there!

It was then time for our final carnival Holsworthy where unfortunately we didn't pick up any prizes but nethertheless everyone enjoyed themselves!

In November aswell we had some members who were part of the group team at county yfc sports where they won the Netball! Whilst this was happening Becky was at the National stock judging finals picking up 3 awards including coming 3rd overall.

In early December we took part in our first disco dancing competition coming 4th at county round the first time I think we've done anything like that in a while! A few days later we held our annual poultry bingo which was well supported as usual raising £750 for vital club funds.

To carry on from a busy end to the year we had an interesting tour at the NWF feed mill at Torrington where 20 members attended, and held our annual Christmas meal at Bratton pub where over 30 members came (Maybe because the club paid for it?!)

January was abit quieter compared to the last few where we had a farm safety talk at the new Devon yfc rural hub in Cheriton Bishop, and at the end of the month 20 or so members went paintballing at Tavistock which everyone thoroughly enjoyed.

February was the month leading up to our first ever tractor run, but before this we had an informative tour at Sandford Orchards with Winkleigh yfc, it's great to see how our favourite drink is made! Mid-February saw our first ever tractor run seeing over 60 tractors and raising more than £1000 for charity, this event showed true team work from both members and leaders of the club.

March was another busy month where we had Easter cake decorating, our first

ever Easter bingo raising over £900 for charity and a tour at a large machinery firm Teagle which was an eye opener for the boys!

April saw the return of our traffic light disco which was well supported making £2300 for club funds. Several members then took part at the group round of pool skittles and darts where we won darts and pool. Our darts team (Immy Ogborne, Sam Moyse and Brendan cooper) then went onto win at the county round bringing back the shield to Lewdown, and our pool team (Adam Wonacott and Sophie Credicott) coming a close second at the county round.

However April also brought tragedy to the whole of our club and the community with the loss of one of our active members George Ogborne... George will be sorely missed and is forever in the hearts of us at yfc.

May was a quiet month with silage beginning to happen, however as a club we entered a club promotion board at Devon county show where it came 3rd out of 20 or so!!

June saw the return of our charity big breakfast serving over 100 breakfasts' and raising just over £400 for one of our ex members expedition for cancer research. We also had 9 members attend the stock judging practice by kind permission of the Crocker family, East Raddon.

July saw a busy month with our group rally at the end of the month members were getting all there entries ready! At the start of the month 20 members went go karting near Exeter, with some getting more competitive than others! The middle of July brought the group stock judging where we were very successful with Becky Dennis, Charlie Crocker, Owen Bellamy and Megan Brooking all giving it a go and gaining prizes. It was then the one event we had all been waiting for... our group rally. Lots of members attended and entered various classes such as cooking or floristry, and overall we came third out of the six clubs in Tarka!

We are now awaiting our club dinner and dance which looks to be a great night, and our annual cider and pasty quiz which is on the 5th October (Posters will be out soon).

Andyman Appliance Repairs

Washer, Tumble or Electric Cooker

Not well

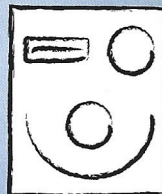
Call 07927 015360

For A Fast Friendly Service

Over 25 Years Experience

No Job To Small Or Big

All Work Guaranteed



8th Woolly WEEKEND

13th & 14th October 2018

 children's hospice
SOUTH WEST
Registered Charity No. 1003314

Find us on
Facebook



Not just
for
Knitters

A collection of the finest wool
products from Devon & Cornwall.
Perfect for you & your home.

Supporting Children's Hospice South West

£3 Entry: including raffle. 10^{am}-4^{pm}

KELLY HOUSE PL16 0HH
Between Launceston and Tavistock

www.woollyweekend.co.uk



Holsworthy Amateur Theatrical Society
presents

'Lest We Forget'

to commemorate WW1

Directed by

Lesley & Mike Wonnacott

8th & 9th November 2018, 7:30pm

Tickets on sale from the Box Office

Mon-Sat, 10am-3pm

from 28.8.18 to 22.9.18 and again from 29.10.18

Tickets £7 only

www.holsworthytheatre.co.uk

Proceeds from this performance will be split between
Help for Heroes and The Royal British Legion
HATS Theatre, Bodmin Street, Holsworthy EX22 6BH
(01409) 253 826 Charity N° 1110237 Affiliated to NODA



FUNDRAISING
IN SUPPORT OF
**HELP for
HEROES**



heritage
lottery fund

LOTTERY FUNDED

MARYSTOWE CHURCH

The bells rang out on Thursday, 23rd August, in memory of Private Tom Eggs, aged 19, killed in action, 100 years ago to the day. Tom, who lived at Park Farm in Chillaton, had worshipped, been a chorister and a bell ringer at Marystowe Church.



Relatives, some direct descendants of Tom Eggs, villagers and a dozen or so bell ringers gathered in the church. Geoff Hill, a bell ringer at Tavistock and Lamerton, gave an introduction to the afternoon and explained the different sequences and peals that would be rung. Val Hill read a poem written by Alan Hayden of Lewdown. This had been inspired by the memorial plaque erected by Tom's fellow ringers in the ringing room. Deidre Heyward, a great niece of Tom's, read out a letter written by her mother, giving further details about Tom's life.



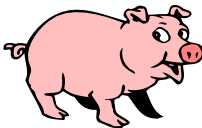
Memorabilia, including his medals, were provided by a family member and displayed in the church for all to see.

During the afternoon, tea and home-made cakes were served in the church.

Our thanks go to everyone who joined us to mark the occasion.

Deborah Asbridge

FOR SALE



Pork & Sausages
Enquiries Please Contact
Colin on 01566 783279

The Clovelly Inn

Bratton Clovelly



Torben,

Suzy,

Alex & Thomas
look forward to seeing you
01837 871447



STOWFORD
CHRISTMAS TREE
FESTIVAL

St. John the Baptist
Stowford

Saturday 8th December

10am - 4pm

Sunday 9th December

12am - 4pm



Soup & Roll + Tea/Coffee
Available in the Parish Hall

Free Parking



In aid of St. John the Baptist Stowford church funds

Fidgits Cleaning Service

For all your domestic cleaning needs

Fully insured. References available.

Price available on quote

Telephone 07974496236

Email: fidgitscleaning@outlook.com



CHURCH NEWSLETTER

Ministers

United Benefice of Lifton, Broadwood, Stowford,
Lewtrenchard with Thrushelton & Kelly with Bradstone

The Revd. Nick Law 01822 840229

nick123law@gmail.com

The Rectory, The Down, Bere Alston, PL20 7HQ

Milton Abbot Benefice

The Revd. Andy Atkins, 01822 870298

The Vicarage, The Parade, Milton Abbot PL19 0NZ

Churchwardens

Lifton-St Mary's

Mr J Courtice

01566 784562

Mrs G Whitford

01566 784242

Broadwood- St Nicholas

Mr D Perkin

01566 776758

Kelly with Bradstone-St Mary's

Mr W Kelly

01822 870393

Mr R Eggins

01822 870240

Marystowe—St Mary the Virgin

Mrs B Dawe

01566 784797

Mrs D Asbridge

01822 860378

Coryton—St Andrews

Mrs. S. Andrews

01822 820420

Mr R. Searight

01822 860148

Stowford—St John the Baptist

Mr C Chick

01566 783223

Mr S Hedger

01566 783765

Lewtrenchard—St Peters

Mrs A Westlake

01566 783909

Mr B. Grant

01822 860569

Thrushelton—St George

Mr A J Nash

01566 783274

Mr T Nash

01566 783320

Roman Catholic Services

Tavistock Sunday 9.15 am
Holy Days 10am

Fr. Greatbatch 01822 612645

(P. Sparling 01822 860355)

Okehampton Saturday 6pm
Sunday 11am

Fr M. Darline Joseph

01837 52229

Launceston Sunday 10.00 am
Holy Days 7.30pm

Rev. David Annear 01566 773166

Quakers

Meeting for Worship

Tavistock every Sunday 10.00am.

4 Canal Road, Tavistock.

Contact – Kay Nicholson

01822 614596

Okehampton

Every Sunday 10.30am.

Children's Meeting 2nd Sunday

Community Centre, Okehampton

Community College, Mill Road,

Okehampton.

Contact - Eleanor Flack 01837 53475

St. Mary the Virgin, Marystowe

Church services at 9.30am unless otherwise stated

1st Sun. in the month - Holy Communion ● 3rd Sun. in the month - Family Service

WORSHIP IN THE LIFTON BENEFICE

The Churches of

St.Mary, **Lifton**. St.Nicholas, **Broadwoodwidge**. St.Peter, **Lewtrenchard**
 St.Mary, **Kelly**. St.John the Baptist, **Stowford**. St.George, **Thrushelton**

Holy Communion every Wednesday, 10.30am at St.Mary's, Lifton

OCTOBER 2018

SUN 7th	09.30 11.15 11.15 11.15	Holy Communion Thrushelton Morning Prayer at Stowford Holy Communion at Kelly Morning Prayer & Harvest at Lifton
SUN 14th	09.30 09.30 11.15	Morning Prayer at Broadwoodwidge Morning Prayer at Lifton Songs of Praise & Readings at Lewtrenchard
SUN 21st	09.30 11.15 11.15	Morning Prayer at Thrushelton Morning Prayer at Stowford Morning Prayer at Kelly
SUN 28th	09.30 09.30 11.15	Morning Prayer at Broadwoodwidge Holy Communion at Lifton Holy Communion at Lewtrenchard (Lunch at Alder after the service for anyone attending the service. Please let Anne Westlake know if you are able to come)

All are welcome to stay for refreshments when they are served after services.

A meeting has been arranged for Churchwardens, PCC members and members of the congregation of the Lifton Benefice to meet the Bishop of Plymouth on 25th October 7.00pm at the Community Hub, Broadwoodwidge.

Bridestowe Methodist Church

Preachers for Oct at 11.00am

7th Rev L Singleton,
Harvest Festival

9th Harvest Supper 7.00pm

14th B Searle

21st G Yates

28th Rev M Whitehouse

Thrushelton Church

Harvest Festival

Friday the 28th of September

At 7pm.

Refreshments after in the church.

**Service conducted by the
Reverend Adrian Brooks of
Bridestowe.**



A LOCALLY BASED SERVICE AND REPAIR COMPANY FOR OIL FIRED HEATING/COOKING APPLIANCES.

MARK WOULD BE PLEASED TO OFFER COMPETITIVE PRICES FOR A QUALITY SERVICE. DISCOUNTS ARE AVAILABLE: PLEASE ENQUIRE

- ◇ BASIC BOILER SERVICE £60
- ◇ BASIC COOKER SERVICE £70

PLUS THE ADDED BONUS OF NO VAT TO PAY!

SO GRAB A BARGAIN SERVICE FOR YOUR BOILER OR COOKER BY CALLING:

MARK ON 07814 976 076

BROADWOODWIDGERBOILERSERVICE@GMAIL.COM

PLUMBER

EST 30 Years

Lewdown & District

Tel: 01566 783562

Mobile: 07984 812807

OIL BOILERS Breakdown Servicing Replacement

Genuine 24 hr service - Lots of common parts in stock!

OIL TANKS Replacement Relocation New Installations

Real emergency service – we can pump out a leaky tank to one of our temporary tanks and we can connect it up to your system – hows that for a problem sorted!

PLUMBING & HEATING As well as our renowned 24 hour

Emergency Plumber service we also carry out 'normal' plumbing and heating jobs – just ask!

01566 783471 07596 997207

07599 078 805

R & S McNamara, Lewdown, Devon EX20 4PT Retained Contractors to all of the major insurers

OFTEC Reg C12274

www.emergencyplumbersouthwest.co.uk



FORD COTTAGE CHILDMINDERS

Kathy Lawrence & Jo Kingdon

Over 10 years Experience

OFSTED Rated Outstanding

We will cater for your Childcare needs

Ages 4 months—14 years

7.30am - 6.00pm weekdays

We accept the Government funding for 3 year olds
and 2gether funding for eligible 2 year olds.

As little or as much as you need.

We operate a 'Pay as you go' system - No charges for missed days

TEL: 01566 783317 Email: childminders@hotmail.co.uk



K. Moore & Son. PLANT HIRE

**Specialising in all sitework,
drives, sand schools, septic tanks
hedging and all types of farmwork.**

Royal Oak, Newton Down, Lifton

Tel:- 01566 784722

07785 540494

Bratton Clovelly & Area Twinning Association

3 Course Roast Lunch



Inc. Glass Wine £12.50 per person
Sunday November 4, 2018

12:30 for 1pm

Bratton Clovelly Parish Hall

Grand Raffle

All welcome - children free



**Tickets Available From
George Bellamy 01566 783266**

In aid of Dunterton Church

Tamar River Walk

Sunday
21st October 2018

Greystone
Bridge

B3362

From

Beera Farm (OS GR 400760)
near Horsebridge

Parking available

To
Greystone Bridge (OS GR 369804)

12kms (7.5miles)

Start only at Beera Farm between 11.00am and 1.00pm

No charge for entry, donations welcome at Finish

Finish and Refreshments

at Greystone Bridge

Return shuttle service to car park £2.00
available 1.30 to 4.30 only

Queries 01822 870285 or 870244

Dogs on leads welcome



CARPENTRY & JOINERY
MARK CHIVERS - SOLE TRADER

HIGHLY SKILLED CARPENTER WITH OVER "38 YEARS" EXPERIENCE
"NO JOB IS TOO SMALL"

FREE ESTIMATES PROVIDED - NO OBLIGATION

PLEASE CONTACT ME WITH ANY ENQUIRIES:
Telephone: 01566 783743 Mobile: 0780 410 4812
EMAIL: M.C.CARPENTRY@OUTLOOK.COM

Stove & Chimney Specialists

Visit our Showroom at Red Post, Nr Bude, Cornwall. EX23 9NW

Supply and install woodburners & multi-fuel stoves

- Gas & Electric stoves
- Fire places & surrounds
- Chimney flues & linings
- Laying slate hearths & oak beams
- Chimney stack rebuilds & repairs
- Fireplace renovations
- Showroom with live working stoves

Showroom Opening Hours:

Mon-Fri 9am until 4pm

Saturday 9am until 2pm

Call us now for a FREE
no obligation quote on:

01288 381 852



Website: www.cblstoves.co.uk
Email: carl@cblstoves.co.uk



An Evening of Local Heritage and Music

As I Walked Out

*Sabine Baring-Gould and his search
for the Folk Songs of Devon*

by

Martin Graebe

Light Refreshments

**Tuesday 16 October at 7.30pm
at St Peter's Church, Lewtrenchard**

Admission £7.50

*Seating is limited and booking strongly advised:
please phone 01566 783396/783567. Seats then
reserved only until 10 mins before the start*

Martin Graebe researches and writes about English folk songs, in particular the work of the Victorian song collector, Sabine Baring-Gould. He sings with his wife, Shan, and they have performed Baring-Gould's songs to audiences around the world.

*Organised by Lewdown Past and St Peter's, Lewtrenchard
All proceeds to St Peter's Church Funds*

A Concert with the
Launceston Male Voice Choir
On 23rd November 2018 At the Victory Hall

Stowford Parish Council



Minutes of Ordinary meeting held on Tuesday 11th September 2018 7.30pm at Stowford Parish Hall.

New Councillors – The Chair welcomed Mr Simon Grace to the Council. Mr Grace offered his service for the Parish. Cllr Dunn proposed the motion and was seconded by Cllr Hennessey. Clerk to send Mr Grace the following forms for completion, *Declaration of Acceptance of Office and Undertaking to Observe the Code of Conduct* and *Register of Councillors Interests*.

Planning - Application reference 0244/17/FUL, Dingles Heritage Fairground, Milford Farm, Lifton, PL19 0AT. Council decision – support.

Reports from councillors – Cllr Hennessey reported that the refurbishment of the Parish Hall had taken place with the painting of the main hall much brighter. New window blinds had also been installed. The Hall committee had also reported a successful show in August with many more entrants. After costs over £200 had been raised for the Hall funds. The Hall committee had agreed to hold a supper in the spring of 2019, date to be advised.

Report from Cllr Edmonds WDBC –

Cllr Edmonds gave a synopsis of ‘The local Government Finance Settlement technical consultation’ this included a Borough and Town Precept cap of 2.99%, but the Parish Precept remained unchanged without a cap. The government report identified that PC’s increased Precepts at an average of 4.9% for year 2018-19 down from 6.3% in 2017-18.

Emergency Ready was a new initiative introduced by the government to filter down to all borough, town and parish councils. The campaign started on 1st September for 30 days and asks people to prepare for a range of emergencies including storms, adverse weather, power cuts etc. It is encouraging residents to think about simple actions on how to keep their families safe and checking on elderly and vulnerable neighbours. For more information about emergency planning visit the website www.westdevon.gov.uk/article/4028/Emergency-Planningand-Response-

Finance – The RFO provided a copy of the report dated 11th September. The reconciled bank balance showed a credit balance of £6385.38. It was resolved to remove previous Cllrs from the bank mandate, clerk to advise the bank. The following payments were authorised;

Lewdown Parish Council – admin 50-50 shared costs £44.48, Tim Nash – Poppy Wreath £15.00, Tavistock Town Council – councillor training £12.00, Clerk expenses – I.C.O. (Data protection) annual fee £40.00, Clerk salary – Peter van Delft (May - June) £206.00 Clerk salary - Peter van Delft (July – August) £206.00

Vat refund for period 23.09.15 – 04.12.2017 received. Items for consideration for the 2019-2020 budget were discussed, these included;

A contingency for the 2019 borough and possibly the parish council elections £800, refurbishment of bus stop shelters approx. £500, donation to Okehampton District Community Transport Group £50.00, I.C.O annual subscription £38.00 (by D.D.). Discussion took place for proposing a donation of £200 to Stowford PCC. It was proposed by Cllr Dunn and seconded by Cllr Hennessey to continue with the donations but should be considered again at the next meeting after obtaining NALC guidelines. Draft budget to be prepared for the next meeting by the RFO.

Meeting closed 8.48pm

Date, time and place of next meeting

TOP SOIL

TOP QUALITY TOP SOIL FOR SALE

SEA SAND · ROAD PLANINGS

VARIOUS DECORATIVE GRAVEL CHIPPINGS & BUILDING AGGREGATES

NO VAT

01566 784645 OR 07771 823414

**ROGER
WONNACOTT**
GROUND & GARDEN MAINTENANCE

- ▲ GENERAL GARDEN MAINTENANCE
- ▲ SERVICES RENEWED & REPLACED
- ▲ LEAK REPAIRS & TROUBLESHOOTING
- ▲ MOLE / GRUNDOMAT WORK UNDERTAKEN
- ▲ MOLE & COMPRESSOR AVAILABLE



- ▲ COMPLETE JOB PRICING OR HOURLY RATES
- ▲ FULLY INSURED & BASED NEAR LAUNCESTON

07919 912776

rwonnacott@hotmail.com

John Burrows Boiler Services

**Commissioning, Servicing and
Breakdown Engineer**

for

Domestic Oil Fired Appliances

**AGA Rayburn Grant Trained
OFTEC Reg No C9888**

**Tel: 01822 810494
and 07782345395**

E-Mail:

John_campbellburrows@icloud.com

**Gill House, North Brentor,
Tavistock, Devon PL19 0LR**

Special Rates for the Elderly

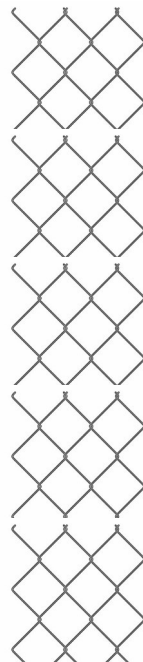
**FUND RAISING FOR
"HELP FOR HEROES"**

TJS fencing contractors

Friendly reliable service,
competitive rates

post and rail, stock netting,
agricultural maintenance.

All to a high standard
No job too small
07832 187057



Tim Dixon

**Domestic Plumbing
&
Home Improvements**

**01566 784028
07903535881**

careful & reliable service
*Bathroom and shower installation
Tiling
General home maintenance
& repair*

Roger's Painting & Decorating Services

Interior & Exterior Work
Traditional & Modern Techniques
City & Guilds Qualified
25 years Experience



Mobile: 07783 819171
Tel: 01566 784170

GRAHAM TOWNSEND GROUNDWORKS

WATER DRAINAGE & GROUNDWORK SPECIALISTS

WATER LEAKS & RENEWALS

**DRAINS CLEARED
TREATMENT PLANT
ALL FENCING WORK
DEMOLITION**

**GROUNDWORKS
DRAINS REPLACED
MOLING (No Dig)
PATIOS DRIVES**

SEPTIC TANKS INSTALLED

FREE ESTIMATES

TEL: 01837 657687 / 01566 783788

MOBILE: 07866 465093

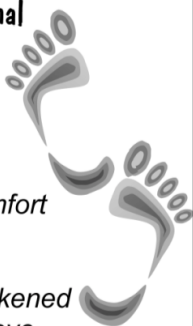
email: info@gtownsendgroundworks.com

Mobile Foot Care

Sally Isaac S.A.C. Dip. FHPT/FHPP

**Gentle and professional
foot care in the
comfort of your
own home**

*If you suffer discomfort
from corns, callus,
ingrown toenails,
cracked heels, thickened
nails, etc. or just have
difficulty cutting your toenails
give me a ring*



**Telephone Sally
07961 076 168**

WELCOME TO

LOBHILL FARMHOUSE

**BED AND BREAKFAST
and HOLIDAY COTTAGE**



*Lobhill Farmhouse, Lewdown,
EX20 4DT*

*Tel: 01566 783542
0781 724 4687*

Jane Colwill

www.lobhillbedandbreakfast.co.uk

Stowford Church

Sunday Lunch

21st October 12.30 for 1.00pm
Victory Hall - Lewdown



Menu

3 Course
Roast Lunch
Inc. Wine
£12/person

Grand Draw
For Local Charity

Please
Book Your
Ticket



TICKETS AVAILABLE FROM
Julie Chick 01566 783223
Monique Hedger 01566 783765

In aid of Stowford Church Funds

For **Dogs & Cats** **Raw Meat Animal Feed**
Convenient (400g blocks) *Frozen to preserve*

Natural, just meat or meat and bone

No Preservatives, No Artificial Colouring's
(both can be harmful to your animal)

For information or to order

Raw Rations Plus



website: **www.rawrationsplus.co.uk**

Phone: 07831309666

Email: sales@rawrationsplus.co.uk

Post: Fairview Bungalow, Lewdown,
Okehampton, Devon EX20 4DL



Julie's 

Catering Van

HOSPITALITY WITH A HUG

Available for your event

Contact 07572412421

**Pulled Pork, Bacon, Sausages,
Burgers, Chicken Curry, chips,**

**Hot & Cold Drinks. Homemade Cakes
and Cream Teas in season.**

**Happy to discuss with customers just
ring me or find me on Facebook**



Lakeside, Roadford Lake

Open 7 days a week

Please see website for seasonal opening
times

Café Gift Shop Sunday Carvery
Weddings Conferences Events
Walks Cycling
Children's Play Area

Call 01566 784859

www.swlakestrust.org.uk

Christmas is coming!

For many people, sending and receiving Christmas cards heralds the start of the festive season and helps to stave off winter blues with steady reminders that family and friends are thinking of each other during the cold, dark weeks ahead.

Sending a charity Christmas card not only helps brighten someone's day but also helps support one of the many brilliant organisations working tirelessly to improve lives across the UK.

'Cards for Good Causes' helps over 250 charities by selling their cards in 300 popup shops across the country. It offers an unrivalled selection of charity Christmas cards, wrapping and stocking fillers and promise to return at least 70p in every £1 to the individual charity you have chosen to support. Buying from Cards for Good Causes is a great choice for both you and your chosen charity.



You can see a selection at

Central Methodist Church Launceston from 1st Nov to 8th Dec
10am - 4pm Monday to Friday 10am - to 1pm on Saturdays

**LAUNCESTONE MALE
VOICE CHOIR
CONCERT
St NICHOLAS
BROADWOODWIDGER
With Guest Artists
Leslie & Mary Mazur-Park**

Sat Nov 3rd 7pm

**Tickets £6 to include
Refreshments
In aid of Church Funds**

**Contact:
Marion Perkin 01566 776758
Kevin Lane 01566 783724**

Lewdown 200 Club

AUGUST DRAW

£15	Paul Crease	No. 151
£5	Chris Durston	No. 135
£5	Charlie Martin	No. 81

SEPTEMBER DRAW

£50	Ernie Piper	No. 188
£15	Martin Redwood	No. 132
£5	Trevor Dawe	No. 120
£5	Louise Bowden	No. 90



Thank you from Thrushelton Church Wool Project

Thank you to all who came to the Open Day on 8th September to see how we are getting on with our project.

Sixteen runners were in place in the pews and with many helpers, we worked on two more, keeping the locker-hooking going all day. Tim and Nicky provided a great barbeque, we had the pleasure of listening to the newly repaired organ and even the bells were rung in the afternoon.

Everyone was most generous and in total £427.12 was donated. This will be split with half for the Devon Historic Churches Trust and half for Thrushelton Church. Thank you! It was great to see so many people and hopefully sometime in the future you will be able to come back and see runners on all of the pews (??!)

We have two dates planned for taking everything forward:

Wed. 10th October. Lewdown Victory Hall, 12.30pm :

Sharing with Soupatroupers – Locker hooking and carding for all to try.

Sat. 10th November. Lewdown Victory Hall from 10.30am:

Show and share the runners under construction, plus cake and coffee.

Please do feel welcome to come along on either of these dates – you can lend a hand or you can just come to see what we're doing.

For more information please phone or email Rosie:

01837 871238 rosieyells@lineone.net

Rosie Yells.

A.J. NASH BUILDERS LTD.

Andy Nash
General Builder & Decorator

Anvil Cottage
Lewdown
Okehampton

07769728425
01566 783274
sarahnash@btinternet.com

FEDERATION OF
MASTER BUILDERS
FMB
The sign of
building quality



Broadbury Landcare

All Aspects of Garden Maintenance
and Landscaping
Fully Qualified Fully Insured Free Estimates
10 Years Experience
Andrew Barton 07532 216216



Coins - Medals - Bank Notes
Wanted to purchase
Contact Roger Knowles

At Townleigh.



Phone 07763 792195 (after The Archers!)

A C WORTH BUILDERS



GENERAL BUILDERS, DECORATORS,
PLUMBING & HEATING,
PURPOSE MADE JOINERY etc.

BIRCHAM, LEWDOWN, OKEHAMPTON, DEVON EX20 4BU
Email: acworthbuilders@aol.com



Tel: 01566 783282
Keith: 07778 471648
Andy: 07867 524515



Registered House Builder



T C M Plumbing

Burst pipes? Tap dripping? Overflow running? Valves Leaking?
Radiators not getting hot? Gutters blocked or leaking?
Based locally at Inwardleigh we cover the surrounding areas
Helping you with your plumbing needs no matter how small

Contact Tim Morgan on 01837 810599
Or visit our website www.tcmplumbing.org.uk
to see what we can do for you

BODYMAINTENANCE.CO.UK

Sports massage, injury & pain clinic

Launceston - Okehampton

Highly experienced in providing effective treatments for acute, chronic, radiating and referred pain, strains & sprains. Free consultation and advice available.

Please contact Clive Lacey on ...

01566 783609 / 07747112019

Or email - clivelacey@bodymaintenance.co.uk

Further info - www.bodymaintenance.co.uk

J.D. HALL **CARPENTER AND JOINER** **(OVER 30 YEARS EXPERIENCE.)**

FOR ALL YOUR WOODWORKING NEEDS
CALL 01566 783566 OR 07881 752822
www.jdhalloakconstruction.co.uk

Gardeners



Enjoy the Winners Circle
For that champion veg
Collect your own FREE



Proper Well Rotted
*The Only Local Source of
Pedigree Fell Pony Plops*

01566 783471

Free Bags Available!
Trailers welcome!



SWIFT GHIMNEY SWEEP



CONTACT STEVE

01566 783435

07890467406

- Brush and vac
- Certificate issued
- Your local friendly sweep

Septic Tanks

Emptied

Phone: 01805 601286

Mobile: 07831241531

Leave a message, we will
return your call, or email:

Peter@peterhearnwaste.co.uk

Small Lorry
Available

Card payment accepted

**Peter Hearn
Haulage Ltd**

Tavy Turf

Pete Badge
01822 610998
07980564175

Growing & Supplying

Turf, Topsoil & Compost

Acres of weed treated turf all ready to be cut.

All turf is cut fresh then supplied direct to your drive.

Topsoil and Compost dry stored

Landscaping & Laying

Years of experience in clearing, planning, landscaping lawns & laying turf.

Diggers, Stone Buriers, levellers & graders

Grass Cutting & Maintaining

Specialists in maintaining large lawns & playing fields.

Grass Cutting, Collecting, Disposal & Mulching.

Vegetation Clearance.

We only grow professional turf & use specialist machinery

B & N FARM FOODS

01409 211287

ONE CALL FOR ALL YOUR NEEDS

MEAT - POULTRY - FRUIT - VEG - CHEESE

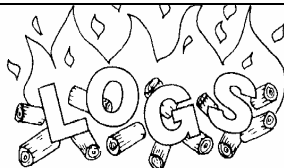
FOR PRIVATE HOUSEHOLDS / HOTELS / PUBS ETC

FIND US AT HATHERLEIGH MARKET (Tuesday) AND ST. GILES

ON THE HEATH (1st FRI)

FIND US ON FACEBOOK FOR HOME DELIVERIES!

Adrian Davey
Painter and Decorator
Over 30 years experience
Friendly and reliable service
01566 780 477



supplier of

HARDWOOD LOGS

Cut & Split to your requirements

Tel. Colin Bennett: 01566 783514

EMERGENCY NUMBERS
FIRE, POLICE, AMBULANCE

999

*For all other information and contact
with Police stations call 101*

**Your local police contact for
Lewdown. Chillaton. Stowford Lifton
area is -
PCSO SEONIAD GREENWOOD**

Please contact via 101

**For Neighbourhood & Farm Watches
and crime prevention advice**

**For HORSE WATCH
Gina. 01837 840716**

Floodline 0345 988 1188

Parish Clerks

Lewdown Grouped

Peter van Delft 01566 783023
lewdownnpc.clerk@gmail.com
www.lewdowngroupedpc.org.uk

Milton Abbot Grouped

Shane Honey 01822 840454
shanehoney7@hotmail.com
www.magpc.co.uk

Stowford

Peter van Delft 01566 783023
stowfordclerk@gmail.com
www.stowfordparishcouncil.org.uk

West Devon M.P.

Geoffrey Cox M.P. 01822 612925

County Councillor

Kevin Ball 07870 377879

Borough Councillors

Milton Ford Ward

Mr Bob Baldwin 01822 611289

Bridestowe Ward

John Hockridge 01837 861221

Caroline Mott 01837 861212

Tamarside Ward

Chris Edmonds 01566 784794

SCHOOLS

Lewtrenchard 01566 783273

Lifton 01566 784288

Milton Abbott 01822 870273

COLLEGES

Tavistock 01822 614231

Okehampton 01837 650910

Launceston 01566 772468 / 773918

RING AND RIDE SCHEME

Okehampton Area 01837 55000

Tavistock Area 01822 618028

COMMUNITY GROUPS

Cricket Club 07847111330

Chillaton Football Club 01822 860476

Lamerton Pony Club 01822 860350

Lewdown Past 01566 783396

Lewdown Residents Assn 01566 783320

Lewtrenchard W.I. 01566 784104

Lifton Benefice Churches

The Revd. Nick Law 01822 840229

Lifton Surgery 01566 784788 or 111

Red Spider Company 01566 783505

Recreation Field 01566 783367

Stowford Hall 01566 783223

Victory Hall 01566 783267

Youth Cricket 07847111330

Young Farmers 07531 286011

ADVICE HELPLINES

Citizen's Advice Bureau 08444 111444

West Devon Women's Aid 0183755228

Age Concern 01752 665424

Health Info Line 0800 665544

Homelessness Trust 01822 615259

Parentline 0800 8002222

Relate 01392 275681

Samaritans 08457 909090

Tavistock Area Support Services (TASS)

(Age UK is at TASS) 01822 616958

Transport to Health 01822 617525

Victim Support 01822 820455

Youthwise Okehampton 01837 54004

SHOP & POST OFFICE

Copper's Post Office & Stores Lewdown

01566 783218

Newslink Day

Come and help put the next Newslink
together.

Wednesday 24th Oct. 2018

2pm @ Victory Hall

We would welcome your assistance in
collating the pages, stapling or folding
the magazine... and you get a cup of
tea and a biscuit.