

**THE AREA MAGAZINE FOR LEWDOWN, CHILLATON, CORYTON,  
STOWFORD, MARYSTOW, THRUSHELTON, LEWTRENCHARD**

**June 2024**

**The magazine for all that's going on in your area**

**50p  
donation**

# Community

# Newslink

**Published by the Lewdown Residents Association**

Registered Charity Number: 1071808

**Funded by the Advertisers, Sponsors, Subscribers & Area Churches**

## Fire/Police/Ambulance Emergency 999

All other contact with Police 101

**Police Contact/Crime Prevention**  
PCSO Seoniad Greenwood 101

## Neighbourhood & Farm Watch

Horse Watch

Gina 01837 840716

Floodline 0345 988 1188

## Parish Clerks

Lewdown Grouped

Peter van Delft 01566 783023

[lewdownnpc.clerk@gmail.com](mailto:lewdownnpc.clerk@gmail.com)

[www.lewdowngroupedpc.org.uk](http://www.lewdowngroupedpc.org.uk)

Milton Abbot Grouped

Jane Savage

[clerk.magpc@outlook.com](mailto:clerk.magpc@outlook.com)

[www.magpc.co.uk](http://www.magpc.co.uk)

Stowford

Peter van Delft 01566 783023

[stowfordclerk@gmail.com](mailto:stowfordclerk@gmail.com)

[www.stowfordparishcouncil.org.uk](http://www.stowfordparishcouncil.org.uk)

## West Devon MP

Geoffrey Cox 01822 612925

## County Councillor

Lois Samuel 01837 851240

## Borough Councillors

Milton Ford Ward

Neil Jory 01822 860342

Bridestowe Ward

Terry Southcott 01566 783079

Caroline Mott 01837 861212

Tamarside Ward

Chris Edmonds 01566 784794

## Schools

Lewtrenchard 01566 783273

Lifton 01566 784288

Milton Abbott 01822 870273

## Colleges

Tavistock 01822 614231

Okehampton 01837 650910

Launceston 01566 772468

01566 773918

## Ring & Ride

Okehampton Area 01837 55000

Tavistock Area 01822 618028

## Community Groups

Cricket Club 07847111330

Chillaton Football Club 01822 860476

Lamerton Pony Club 01822 860350

Lewdown Past 01566 783396

Lewdown Residents Assoc. 01566 783320

Lewtrenchard WI 01566 783779

Lifton Benefice Churches

Revd Philip Conway 01566 784462

[liftonpriest@yahoo.com](mailto:liftonpriest@yahoo.com)

Lifton Surgery 01566 784788

01566 784111

Red Spider Company 01409 221376

Recreation Field 01566 783367

Stowford Hall 01566 783223

Victory Hall 01566 783267

Youth Cricket 07847111330

Young Farmers 07443 461344

## Advice Helplines

Citizen's Advice Bureau 08444 111444

West Devon Women's Aid 01837 55228

Age Concern 01752 665424

Health Information Line 0800 665544

Homelessness Trust 01822 615259

Parentline 0800 8002222

Relate 01392 275681

Samaritans 08457 909090

Tavistock Area Support Svcs. 01822 616958

Age UK 01822 616958

Transport to Health 01822 617525

Victim Support 01822 820455

Youthwise Okehampton 01837 54004

## Shop & Post Office

Copper's PO & Stores 01566 783218

Lifton PO & Stores 01566 784211

## Front Cover Picture

*The Aurora Borealis taken during  
Friday night May 10 at St. Anthony's,  
Stowford.*

*Photo: Matt*

## NewsLink Archive

[www.rawrationsplus.co.uk/lraarchive.html](http://www.rawrationsplus.co.uk/lraarchive.html)

For us to be able to print and distribute the Community NewsLink it costs approximately £500 a month.

Please make an annual payment of £5+ for yours to:

Account name:                Lewdown Residents Assoc.  
Sort code:                    090154  
Account number:            97666081

Thank you for your support

# The Community NewsLink

Produced by Lewdown Residents Association

A monthly magazine providing news, information & items of interest for the areas of Lewdown, Chillaton, Coryton, Stowford, Marystowe, Thrushelton & Lewtrenchard

Established January 1999  
Issue No. 279 June 2024

Editor  
Simon Hedger  
St. Anthony's, Stowford, Lewdown, Okehampton EX20 4BY  
Telephone: 01566 783765 Email: [newslink@hedger.biz](mailto:newslink@hedger.biz)

**Production, Distribution and Delivery Helpers:**

Tim & Sarah Nash, Andy McCarthy, Ruth Dawe, Audrey Jones, Tom Andrews, Mike Bickell, Rita Squires, Terry Southcott, Simon & Monique Hedger, Bob Holland Julie Chick, Coppers Stores, Keith Abayomi-Turner and Kathy Lawrence

**All news, photographs, reports, events, etcetera for NewsLink need to be sent to the Editor by the 15th of the preceding month.**

We welcome your articles / items / advertisements. Though we do our best, we cannot guarantee to publish all that is sent to us.

B&W advertising in NewsLink is free for Charity events in our local areas.  
**Adverts for events outside of the area and for businesses are priced as follows:**

	Black & White	Colour
1/4 page	£4/month or £40/year	£6/month or £60/year
1/2 page	£8/month or £80/year	£12/month or £120/year
Whole page	£12/month or £120/year	£16/month or £160/year

Please note that advertising prices are subject to VAT at 20%

***Evening all. Well after nearly a week of dry weather, it's back to grey and miserable, you could be describing myself I hear you shout...***

Anyway I hope some of you were able to see the Northern Lights last Friday night. Myself and the present Mrs Nash successfully managed to miss it, so we made sure to be up for Saturday, and guess what, nothing. The nearest we got to seeing lights in the distance was someone foraging over in the Broadwoodwidge direction, oh well there's always another time. Have seen some amazing photos though, taken from the Blue Lion car park of all places.

Good news. I took Nick to the recycling centre at Okehampton recently, and she was delighted. In the shop come lorry container, where they sell the better quality stuff, she picked up about 50 seed trays hardly used., and a few different books to read to the grandchildren. We could not quite understand why they weighed it though. It turns out they keep a record of how much material they sell that doesn't go into normal recycling. Last year it was just under 150 tons, and this year they are hoping to top 200 tons.

Who's says you learn nothing reading this rubbish, and the magazine is 100% recyclable. The one we receive, helps to light the fire in winter. Will close now as we are looking after the daughters dog while they are away on the annual weeks holiday, whether they need it or not, the place already smells of damp dog.

Best wishes to all of you from Tim Nash, Chairperson.

*Ps. A friend of mine decides to immigrate to Australia. He is being questioned by the immigration officer who asks him "do you have a criminal record?", the man replies I did not know it was still required.*

*The same friend was in a pub, when someone sits beside him. After a few minutes he leans across and says, I don't understand cloning at all. My friend looks at him and says "that makes two of us".*

*My wife always wanted me to take her to Iceland to see the Northern Lights. Last Friday I was able to do this, it seems standing outside the store at Launceston is not what she wanted.*

Dear readers. I have just been informed about the sad passing of Reverend Phylis Ball. She and her husband Geoffrey were the founding members of the Newslink back in about 1992, and ran it until 1996, when they handed it over the Lewdown Residents Association. Our thoughts and prayers go out to all their friends and family, at this sad time. Will write more in next month's edition.



# Soupa Troopers

All welcome to this community event



**Wednesday June 12th**

**From 12.30pm in Lewdown Victory Hall**

**Soup and a Bread Roll, Tea or Coffee - £4**

Followed by conversation & games



## The Ark



### AT BRIDESTOWE METHODIST CHURCH

Is open for teas and coffee and a chat on  
Tuesdays From 10am to 12 noon And 2.00pm to 4.00pm

Thursdays From 10.00am to 12 noon

Do come and join us, you will be made most welcome.

You will find us on **Launceston** Road, Bridestowe.

## From the Mountains of Japan

### No.3 - Shinshu Shinmachi, Nagano's Sheep Town

In Nagano Prefecture, midway along the meandering National Route 19 between the castle town of Matsumoto and the prefectural capital of Nagano City, is Shinshu Shinmachi, a narrow town clustered around the road for a mile or two. Its name is derived from “Shinshu” the historical name for the region, and “Shinmachi”, which translates as “New Town”. With an independent population of just under 6,000, it was merged with Nagano City, some fifteen miles away, in 2010.

Not content to just be a distant suburb of a larger city with its attention elsewhere, however, Shinshu Shinmachi is Nagano's self-styled “sheep town”, with most of its handful of restaurants specialising in what Japan calls “Jingishukan” (Genghis-khan), a dish of mutton grilled over a convex skillet, usually with mushrooms and beansprouts, and in soy sauce.

So popular is the dish in Shinshu Shinmachi that there are metal statues of sheep near the bus stop, and the town even has its own sheep mascots, “Menko-chan” and her little brother, “Ikemen-kun”. The “men” in each name comes from the Japanese expression of a sheep's baaing sound.

However, upon visiting the town, while jingisukan restaurants line the roadside, and the meat is sold in the couple of supermarkets and the road station just outside of town, you could be forgiven for wondering where the sheep themselves are. Shinmachi lies within a steep, forested valley alongside the Sai River, with the only fields in sight given over to apple trees. In fact, it wasn't until I had been visiting the town's elementary and junior high schools once a week for more than nine years that I finally saw some. Having decided to take a scenic route home, I found myself lost among the mountain lanes, and came across a tiny pasture on a steep hillside, upon which a handful of Suffolk sheep wandered around. According to locals, there are other farms way up in the hills, but the town seems happy enough to promote the meat with far more gusto than the sheep themselves.

The dish itself is, however, quite delicious, so if you ever find yourself in this remote part of Japan, do stop in for lunch. And then, perhaps buy yourself a mascot keyring on the way home!

**Chris Ward**



You are invited to

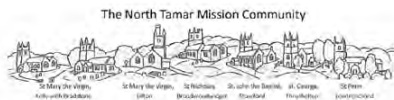
## An Evening with **Mike Bosworth** in Concert

*Mike Bosworth, the well-known Folk Singer  
is bringing his unique blend of Music and Storytelling to  
explore the legacy of Sabine Baring-Gould.*

Interval Light Refreshments,  
Free Entry/Retiring Collection

At

The Parish Church of  
St. Mary the Virgin, Lifton  
**Saturday 1<sup>st</sup> June 2024**  
**At 7pm.**



**Presents:**

**Radebeul Church  
Chamber Choir**



*A Choir from a group of Lutheran Churches  
visiting from Saxony, Germany*  
Director: Peter Kubath

**A Recital of  
English and German  
Sacred and Secular Music**

The Parish Church of St. Mary the Virgin, Lifton.  
**Saturday 22<sup>nd</sup> June 2024 at 7.30pm**

**Free Entry/ Retiring Collection.**

The North Tamar Mission Community



Invite you to join our

**Annual Special Summer  
Fifth Sunday Celebration**  
**On Sunday 30th June 2024 at 11am**  
**At**

**The Rectory Garden, Lifton**  
*Or in St. Mary's Church, if wet!*

Followed by

**A Fellowship Lunch  
At the Rectory.**



**EVERYONE OF ALL AGES,  
(AND DOGS ON LEADS!)**  
**VERY WELCOME**



**Come and help us welcome  
Radebeul Church  
Chamber Choir**

*A Choir visiting from Saxony, Germany*  
at an informal

**Welcome Barbecue and  
Music Evening.**

**At the Fox and Grapes.  
Tinhay, Lifton.**

**Free Entry**

**Barbecue: £5**

**Wednesday 19<sup>th</sup> June from 7pm**

**All local musicians and ensembles are  
welcome to take part.**

For more information contact [liftonpriest@yahoo.com](mailto:liftonpriest@yahoo.com).



## CHURCH NEWSLETTER

### Ministers

United Benefice of Lifton, Broadwood, Stowford,  
Lewtrenchard with Thrushelton & Kelly with Bradstone

**The Revd. Philip Conway, 01566 784462**

**liftonpriest@yahoo.com**

The Rectory, Parsonage Court, Lifton PL16 0BJ

Milton Abbot Benefice

**The Revd. Andy Atkins, 01822 870298**

**andya4jc@gmail.com**

The Vicarage, The Parade, Milton Abbot PL19 0NZ

### Churchwardens

#### Lifton - St Mary's

Mrs E Brown 01566 784386

Sarah Chandler

#### Broadwood - St Nicholas

Mr D Perkin 01566 776758

#### Kelly with Bradstone - St Mary's

Mr W Kelly 01822 870393

#### Marystowe - St Mary the Virgin

Amy Harrowell 01822 860181

Joy McSmythurs 01822 860630

#### Coryton - St Andrews

Mr G. Vicat 01822 820254

Mrs J Whitfield 07989 666427

#### Stowford - St John the Baptist

Mr C Chick 01566 783223

#### Lewtrenchard - St Peters

Mrs A Westlake 01566 783909

Mrs R. Dawe 01566 783127

#### Thrushelton - St George

Mr A J Nash 01566 783274

Mr T Nash 01566 783320

## Service times for june 2024

*Any updates will be posted on the Mission Community Website [north-tamar-churches.org](http://north-tamar-churches.org).*

### 2nd June The First Sunday after Trinity

8am Eucharist at Stowford

9.30am Parish Eucharist at Lifton

11.15am Parish Eucharist at Kelly

### 9th June The Second Sunday after Trinity

9.30am Parish Eucharist & Holy Baptism at Broadwoodwidge

Morning Prayer at Thrushelton

11.15am Parish Eucharist at Lewtrenchard

4pm Evensong at Lifton

### 16th June The Third Sunday after Trinity

9.30am Parish Eucharist at Lifton

11.15am Parish Eucharist at Stowford

Morning Prayer at Kelly

**16th June The Third Sunday after Trinity cont...**

**3pm Baring-Gould Centenary Celebration at Lewtrenchard**  
See separate notice

**23rd June The Fourth Sunday after Trinity**

**9.30am Parish Eucharist at Thrushelton Morning Prayer at Lifton**  
**Morning Prayer at Broadwoodwidge**

**11.15am Parish Eucharist at Lewtrenchard**

**6.30pm Harvest Thanksgiving at Broadwoodwidge**

**30th June The Fifth Sunday after Trinity**

**Fifth Sunday Celebration Eucharist**

**In the Rectory Garden, Lifton**

**(in St Mary's if wet)**

**Followed by Mission Community Lunch in the Rectory**

See separate notice

**Wednesday Morning Eucharist: 10.30 at Lifton**

There will be some occasions when the Wednesday Morning Service will be a service of Morning Prayer.

**From the Parish Priest**

Dear friends,

For us, June is going to be a very busy month.

You will see the notices and advertisements for the various events posted around the community and elsewhere in this magazine. I do encourage you to come and join us in all our celebrations and gatherings.

One of the things that I am most excited about this month is the visit from the Choir from Radebeul in Germany. They are a church choir from a benefice of Lutheran parishes just northwest of Dresden and are coming to spend a week in West Devon to enjoy our lovely countryside, hospitality, and weather!!! Added to that they will be singing around the area and county.

Do please come and hear them and meet them. There are many opportunities to get to know them and to share fellowship, time and music together, including an informal shared music evening and Barbecue at the Fox and Grapes. In a world where there is so much division, we should take every opportunity to make friends and build relationships with our fellow human beings wherever they are from, and whatever their background.

On their final Sunday with us the Revd. Christof Heinze, who is coming with them, will be preaching at Lewtrenchard, and we will be having a bring and share lunch to say farewell to them.

So please join me in welcoming our friends from Germany and making this a week for all of us to look back on with joy and gratitude.

With love and prayers,

Philip

# Bridestowe Methodist Church

## Preachers for June 2024

2nd	Drop in the Ark	10:30 - 12:30
9th	Rev J Cook <b>S</b>	11:00
16th	Rev C Jackson / H Haywood <b>US</b>	11:00
23rd	V Penfound	11:00
30th	J Hill	11:00

## St. Mary the Virgin, Marystowe

Please see the church website [www.southtamar.church](http://www.southtamar.church) for details about services.

Services are also available online from 6pm on Sundays.

### Quakers

Meeting for Worship:

#### Tavistock

Every Sunday 10.00am.

4 Canal Road

Tavistock

Contact: Kay Nicholson  
01822 614596

#### Okehampton

Second Sunday 10.30am.

Fourth Sunday 10.30am

Second Sunday Children's Meeting

Ockment Centre

North Street

Okehampton

Contact: 01837 55805

### *Roman Catholic Services*

#### **Tavistock**

Sunday 9.15am

Holy Days 10am

Fr. Greatbatch 01822 612645

(P. Sparling 01822 860355)

#### **Okehampton**

Saturday 6pm

Sunday 11am

**Chagford** - Sunday 9.00am

Fr. A. K. Gundabathina 01837 52229

[anil.gundabatina@prcdtr.org.uk](mailto:anil.gundabatina@prcdtr.org.uk)

#### **Launceston**

Sunday 10.30am

Holy Days 7.30pm

Canon John Deeny 01566 773166

# Lewtrenchard WI May Report

**We met on May 13 at Lewdown Victory Hall.** 17 members, including our new member Mary, joined our meeting. This was a meeting in two halves, first-half the normal meeting and second-half our annual meeting, where we elected a new committee and president.



Happy to report that all previous committee members were re-elected, but we do have 2 vacancies which we would dearly like to fill. Barbara has been elected as president, congratulations! We thanked our outgoing president, Margaret Dunn, for her 3½ years of service and presented her with an engraved flowerpot and a beautiful rose. We had one big birthday and the lucky lady received a garden peony.

Annual meetings can be quite a dry affair, but not this time, lots of good ideas and vibes were floating around, which is great as we are hoping to bring the 'Wow Factor into our WI', trying to reach out to ladies in fulltime employment. We have a very interesting diary for 2024/25 lined up: The Lone Kayaker, Private Chef, a Beauty Evening and Roger on Antiques, to name but a few.

We rounded off the evening with a handbag bingo, which was won hands down by Lynn, well done.

We had many highlights over the past year, but the most memorable was the Tamar Group Meeting!



**Date and venue for next meeting: Monday June 10, 2024 Annual Outing to RHS Garden Rosemoor**

**June dates for your diary:**

20 - Coffee morning at Roadford Lake

24 - Monday Walk from Lydford

Go on, come along and see what we are about - the WI is not all Jam & Jerusalem ☺

**The Organisers of Leawoodstock** are pleased to announce that on the 28th of September 2024 we will once again be running this unique music event in Bridestowe.

Run by a group of friends, the original idea of a Band in a Barn was born from a throw away remark about how to repurpose a clean farm building after the cattle had been turned out for the summer. The initial event in 2017 was a one off to raise money and awareness of the local Cancer Charities 'Force' of Exeter and 'Pooch' in Plymouth.



We had all had personal experience of the devastation that Cancer can bring and wanted to give something back to these two small organisations. We realised that with our combined backgrounds in Engineering, Health and Safety, Hospitality, Project Management and having possession of a big barn and with an 'in house' electrician we were perfectly placed to organise a Not-for-Profit Music Event to which we could sell tickets. Leawoodstock was born!

Following a very successful evening we were inundated by requests to run again. We decided that to run every year would be too demanding - but we would organise a second event in 2019. This we did - and having learned many lessons from 2017 we streamlined the whole process and chose to support Devon Blood Bikes (Freewheelers) and The Devon Air Ambulance as being very relevant to our daily lives as walkers, riders, cyclists, motorcyclists, and farmers.

With Covid behind us we return with renewed enthusiasm. The line up for 2024 has yet to be finalised, but we are in discussion with two brilliant local Bands and should be able to go public very soon. We offer ample parking and camping to those who wish to stay overnight. Food will be available and here we are delighted to support the Okehampton Lions who will bring their outside catering unit for burgers, bacon baps, chips etc. Pasties will also be available from behind the ultra-long Feed Barrier Bar which also will sell a wide range of alcohol and soft drinks at very competitive prices.

This year our chosen charities are the Dartmoor Rescue Group and RABI - the Royal Agricultural Benevolent Institution - which provides mental health, wellbeing and financial support to farming families.

Please watch this space as we shall shortly be announcing our line up, ticket sales, price and admission details. This event is fully insured, licensed and will be stewarded at all times. Find us on Facebook @ Leawoodstock.



**Visit to Higher Uppacott:  
a medieval Dartmoor longhouse**

**Tuesday 18th June - Make your own way  
or meet 5.30 pm at Lewdown War Memorial**



Longhouses were a distinctive type of medieval farmhouse, at one time found countrywide. Their distinction was that both humans and cattle lived under a single roof, animals at the lower end (the shippon), with a cross passage separating the two sections. Longhouses persisted longer in uplands like Dartmoor and many are still lived in today. However, Higher Uppacott, a Grade I listed building, is one of the best preserved longhouses in Devon, with many original features outstanding.

Go via Tavistock, and from there follow the B3357 to about two miles beyond Dartmeet; the longhouse is at SX702728/what3words replayed.cooks.utensil. About 25 miles (just under an hour) each way and car-sharing encouraged.

Only 20 places are available so please register your intention to join us as early as possible, and let us know if you have to cancel: phone Graham on 01566 783511. A contact number or email would also be useful, in case of a change of plan. Note that there are many steps within the longhouse, some uneven floors plus some low overhead beams.

Please also let us know whether you can give, or would like, a lift. Charge £3 members (half the DNPA public rate!), £4 visitors, who are very welcome, but members may be given priority.

We are pleased to advise that the organisers and all that attended our regular quiz evenings this last winter have raised £259 for charity. The beneficiaries

From the organisers, a big thank you to everyone who came along.

If you need help with transport, please contact Sarah on 07801 106702 or Tracy on 07973 327161

**Lewdown Grouped Parish Council**  
**Coryton, Lewtrenchard, Marystowe and Thrushelton**  
Abbreviated minutes Minute No 774 29th April 2024  
of Ordinary meeting held at Lewdown Victory Hall

These minutes are provisional until they signed by the chair at the next meeting of the parish council

1. Minutes of previous meeting 772 being a true reflection of that meeting was approved and signed by the chair, proposed Cllr Southcott, seconded Cllr Metherell, motion carried.
2. Cllr Mott (WDBC) informed that a new report for May would be forthcoming shortly.
3. Housing survey – WDBC response to questions. Cllr McSmythurs reported that he had conversed with Cllr Mott on the issue in light of the response from WDBC. Cllr McSmythurs felt that the response he received did not demonstrate due process. Cllr McSmythurs would write formally with his concerns to WDBC.
4. Planning app. Ref:- 0355/24/FUL – Application for new agricultural entrance. Land at SX 474 873, Lewdown  
Council decision – support, proposed Cllr McSmythurs, seconded Cllr Mincher, motion carried.  
Planning app. Ref:- 0998/24/FUL- Proposed use of cabin as a holiday let. Foxcombe, Lewdown, EX20 4PH  
Council decision – support, proposed Cllr Alexander, seconded Cllr Wilkinson, motion carried.
5. Finance – Payments were authorised for the following; WDBC - Bin emptying service winter collections £381.89, Caroline Harris - Payroll provider annual sub. £170.00, D.A.L.C. Annual subscription £318.79, Clear Insurance Management – Annual premium £574.88. Proposed Cllr Southcott, seconded Cllr McSmythurs, motion carried.
6. New Councillors - vacant seats for Coryton and Marystow – Cllr Southcott suggested that an advertisement is placed again in the Newslink. Clerk to action.
7. Cllr Reports – Cllr Southcott reported that the Speedwatch team will be returning for checking on 3rd May, new members to help are welcome to join. The new VAS equipment to secure the camera on the remaining two poles will be installed shortly. Cllr Metherell reported that several cars are now regularly parked on the kerbside and also on the grass verge at the Downs, the chair to action. Cllrs Metherell and Yeo reported that a large building appearing to be a garage has been erected on land below the “Y” in Lewdown, a question of planning permission has been raised with Cllr Mott.
8. Play area updates – Approval for the wording of the draft lease agreement. Cllr McSmythurs reported that basis for agreement has been reached for the terms of a lease with the agent of the Baring Gould Trust and the Recreation Ground Trust, a summary of the main points will be circulated to the council members prior to the next meeting, these will include the length of time for the lease, the annual fee payable, the area of the playground and access + car parking for the patrons. The planning application with W.D.B.C. has now been completed and ready for submission. It was resolved to proceed with the submission as soon as possible to avoid further delay, proposed Cllr McSmythurs, seconded Cllr Alexander, motion carried.
9. Website privacy policy statement – update. The clerk informed that he had been in touch with the website provider.
10. Correspondence – Lewdown Cricket Club donation appreciation letter, South West Water response to questions. Cllr Alexander informed that the answer to question 20 was inaccurate, the clerk will respond to the correspondence for an explanation. A request for a white line in Stoney Lane to help with the parking issues, Cllr Southcott to enquire with Devon Highways.
11. Defibrillator – replacement update – It was resolved that Cllr Mincher will obtain quotations for a suitable replacement. The clerk asked the chair if the current location was best suited for the village and suggested if the Victory Hall may be better positioned. It was also suggested that if the location was supported by the V.H. Committee the new defibrillator may need a separate electricity supply, the installation cost would be at the expense of the council and that a contribution towards the electrical usage would also be made by the council. The clerk to obtain Community grants from DCC and WDBC if available.
12. Lewdown Recreation ground – Queen jubilee seat – It was resolved that the seat is to be located near to proposed play area, agreement with the L.R.T. to be obtained first.

Date, place and time of next meeting Monday 20th May, Lewdown Victory Hall, 7.30pm

This is the Annual Grouped meeting and will be followed by an ordinary meeting.

# Gardening Jobs For June

June is one of my favourite months in the garden, as the nights have warmed up and evenings really stretch out, everything in the veg patch accelerates.

Here are my top tips for keeping up:

## Keep your tomato plants tidy

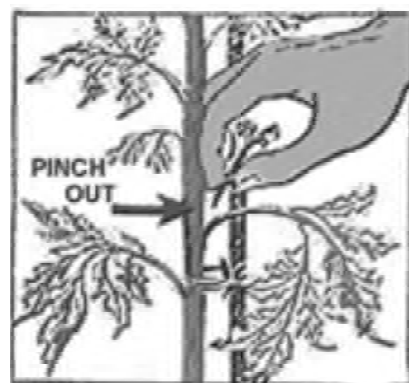
Home grown tomatoes are a delight, and looking after your plants well should improve your harvest and reduce potential problems.

As the plants grow, remove lower leaves, as this helps improve ventilation, reduces water loss and exposes lower trusses of fruit to as much sunlight as possible.

You should also remove, or cut off at least half of the first fruit truss once you see the flowers appear, as the weight of the resulting fruit will cause the truss to hang down to the ground and these tomatoes can rot or attract slugs.

It is also recommended that you remove the side shoots (see diagram) as the plants grow up their support, as this allows the plant to focus on the main stem and resulting fruit trusses.

P.S - You can put the side shoots in small pots of compost or a jar of water to root, giving you extra tomato plants for free.



## Sow succession crops

As the veg patch fills up, it's easy to sit back and relax, but now is a great time to sow succession crops for a second planting after crops like peas, shallots and early potatoes finish in the coming month or so. I plan on sowing the following seeds in later in June, to plant out as small plants in July or early August, for harvest before winter:

Beetroot

French beans

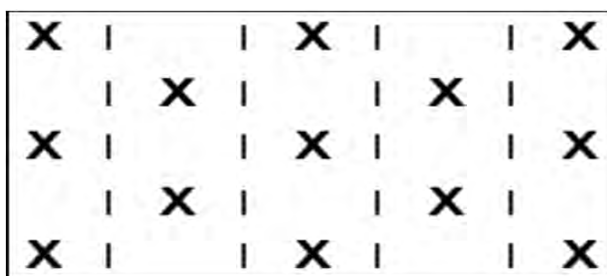
Radicchio

Florence fennel

Lettuce

Radish

It's also not too late to sow another batch of carrots, but do this direct between existing plants (see diagram), as they don't like being transplanted.



**X = shallot sets**

**I = row of carrots**

**Happy gardening!**

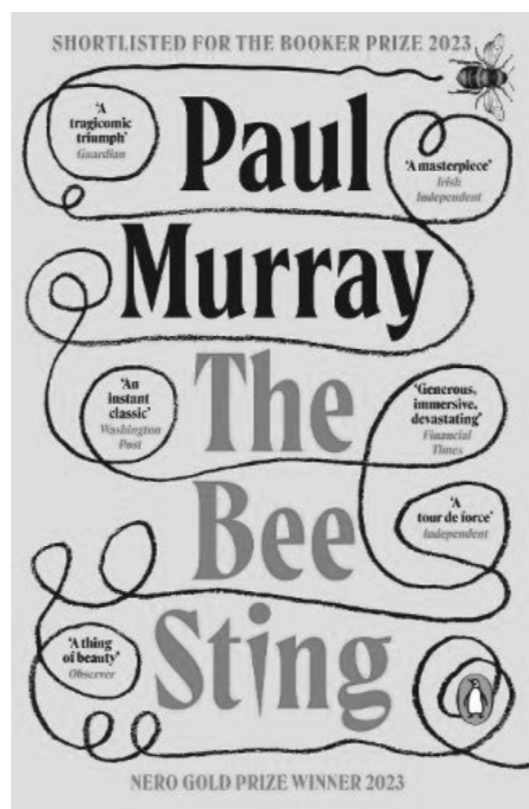
Liam

## Novel of the Month for June 2024

### The Bee Sting by Paul Murray

It can't be overstated how purely pleasurable The Bee Sting is to read. Murray's brilliant new novel, about a rural Irish clan, posits the author as Dublin's answer to Jonathan Franzen . . . A 650-page slab of compulsive high-grade entertainment, The Bee Sting oozes pathos while being very funny to boot . . . Murray's observational gifts and A-game phrase-making render almost every page - every line, it sometimes seems - abuzz with fresh and funny insights . . . At its core this is a novel concerned with the ties that bind, secrets and lies, love and loss. They're all here, brought to life with captivating vigour in a first-class performance to cherish - *Observer* (Anthony Cummins)

Publisher: Penguin Books Ltd  
ISBN: 9780241984406



### Recipe of the Month - Smoked Salmon & Avocado Sushi

**Method:** Put the rice in a small pan with 600ml water. Bring to the boil and cook for 10 mins until the water is absorbed and the rice is tender. Stir through the vinegar and sugar, cover and cool.

Skin, stone and slice the avocado. Put in a bowl and squeeze over the lemon juice, turning the avocado to ensure the pieces are covered.

Divide the rice between the nori sheets and spread it out evenly, leaving a 1cm border at the top and bottom. Lay the salmon over the rice, followed by the chives and finally position the avocado across the centre.

Fold the bottom edge of the seaweed over the filling, then roll it up firmly. Dampen the top border with a little water to help it seal the roll. Repeat to make 4 rolls. At this stage, the rolls can be wrapped individually in cling film and chilled until ready to serve.

Using a serrated knife, cut each roll into 8 rounds. Serve with sweet soy sauce for dipping.

#### Ingredients:

2 tbsp white wine vinegar  
1 large avocado  
4 sheets nori seaweed  
1 bunch chives  
4 large slices smoked salmon

300g sushi rice  
1 tsp caster sugar  
juice ½ lemon



# Come and enjoy an evening of all things Gin & Jazz

Stowford Parish Hall

**Friday 14<sup>th</sup> June 7.30 – 10.30pm**



- Tasting experience, mixers & garnishes provided
- Bring your own favourite Gin to share
- Live music by The Lounge Jazz Trio from 8.30pm
- £10.00 Entry, Tel 07973 359050 to book a place

100 YEARS  
CENTENARY  
SABINE BARING-GOULD

RSYT  
RED SPIDER  
YOUTH THEATRE

**OLD ENGLISH FOLK TALES**  
ADAPTED FROM THE STORIES OF  
SABINE BARING GOULD



Saturday, 6<sup>th</sup> July - 3.00pm  
Lewdown Victory Hall  
**FREE ENTRY**  
Cream teas available following the  
performance for a donation.

With grateful thanks to  
RSYT's Sponsors:




The Parish Church of St. Peter Lewtrenchard



**Sunday 16th June 2024 at 3pm**

**3rd Sunday Afternoon Reflection**

***Evensong and Address,  
followed by Tea***

**Baring-Gould, Nathaniel Woodard  
and Education**

SB-G was encouraged in his priestly vocation by the great  
National Educational pioneer Nathaniel Woodard.

Baring-Gould was a member of staff at two Woodard Schools.

***We are very glad to have The Revd. Dr Justin White, the  
Senior Provost of the Woodard Corporation, to address us.***



## **A message from Lew Trenchard C of E Primary School**

**Please clean up after your dog!**

On May 1st we had some dog foul left on the pavement outside the school, and as a result it was walked along the pavement, through the playground and around school. Most of our staff arrive at school in the dark, so it was lucky they didn't step in it. However, two children have walked it through most of the school, meaning we had to spend an hour in the morning cleaning carpets and pavements etcetera!

Thank you





# *Open* GARDEN

at Coombe Trenchard

15th June 2024, 10am - 4pm

Entrance £6  
Dogs Welcome

*Enjoy:*

- GARDEN WALKS
- MUSIC
- HOME BAKED  
CAKES & TEAS
- PLANTS

*Supporting the  
Sabine Baring-Gould  
Centenary Fund*

COOMBE TRENCHARD,  
LEWTRENCHARD, EX204FA

01566 783179

COOMBETRENCHARD.CO.UK  
SARAH@COOMBETRENCHARD.CO.UK



# **Lewdown Grouped Parish Council**

**Coryton, Lewtrenchard, Marystow and Thrushelton**

## **Councillor Vacancies**

**Would you like to become a councillor representing the parish of Coryton or Marystow.**

**Would you like to help shape the future of the area where you live.**

**If so, why not come along and see what is involved in being a parish councillor, you may then decide to join your parish council and make your own contribution to the future.**

**Contact the clerk for more details:**

**Parish Clerk: Peter van Delft, Tel: 01566 783023 Email: [lewdowngpc.clerk@gmail.com](mailto:lewdowngpc.clerk@gmail.com)  
[www.lewdowngroupedpc.org.uk](http://www.lewdowngroupedpc.org.uk)**

## **NewsLink Articles Required**

**We are seeking articles for our magazine so if you have an interesting hobby, pastime or favourite sport please write about it, take a photo or two and email over to the editor for consideration.**

**Thank you ☺**

### **Lewdown**

**The Lewdown defibrillator was non-functional and has been removed from the roadside porch of the Blue Lion, a replacement is being sought urgently.**

### **Chillaton**

**Located in the Village Square on the wall of No. 1 Barn Cottages, PL16 0HS. The 999 operator will be able to give directions for its use.**



## **Sabine Baring-Gould 1924-2024**

### **Centenary Celebration Group Events Summary**

Fri Jun 7, 2024 7pm - 8pm The Good Neighbour, Sabine Baring-Gould in Cornwall Where: Bodmin Folk Club, St Petroc's Parish Centre, Priory Rd, Bodmin PL312DP

Sat Jun 15, 2024 10am - 4pm Open Gardens with Live Music at Coombe Trenchard Where: Coombe trenchard

Sun Jun 16, 2024 3pm - 4:30pm Sabine Baring-Gould and Nathaniel Woodard Where: St. Peter's Church, Lewtrenchard, Okehampton EX20 4NU

Sat Jun 22, 2024 7pm - 9pm Radebeul Chamber Choir Where: Lifton St Mary's Church, 15-19 Park Rd, Lifton PL16 0BL

Sun Jun 23, 2024 11am - 12pm Radebeul Chamber Choir and Clergy visiting Where: St. Peter's Church, Lewtrenchard, Okehampton EX20 4NU

Sun Jun 30, 2024 2pm - 4pm Traditional Folk Tales by Red Spider Youth Theatre Where: Upcott Barton Farmhouse, Broadwoodwidge, Lifton PL16 0JR

Sun Jul 28, 2024 11am - 12pm Whole Parish Pilgrimage to Exeter Where: Exeter Cathedral, 1 The Cloisters, Exeter EX1 1HS

Sun Aug 11, 2024 11am - 12pm Visiting SBG Preacher at Morning Service Where: St. Peter's Church, Lewtrenchard, Okehampton EX20 4NU

Sun Aug 11, 2024 12pm - 4pm St Lukes Open Gardens at the Forgotten Garden Where: St. Peter's Church, Lewtrenchard, Okehampton EX20 4NU

Sun Aug 18, 2024 3pm - 4:30pm Sabine Baring-Gould and Mary Fri Sep 6, 2024 Where: St. Peter's Church, Lewtrenchard, Okehampton EX20 4NU

All day 6 - 8 Sept Flower Festival by Lewtrenchard WI Fri Sep 6, 2024 - Sun Sep 8, 2024 Where: St. Peter's Church, Lewtrenchard, Okehampton EX20 4NU,

Tue Sep 10, 2024 7:30pm - 8:30pm "SBG the local archaeologist" Where: Stowford Village hall, Stowford, Okehampton 50.66112° N, 4.21819° W

Sun Sep 22, 2024 11am - 12pm Visiting SBG Preacher at Morning Service Where: St. Peter's Church, Lewtrenchard, Okehampton EX20 4NU

Tue Sep 24, 2024 11am - 4pm Preliminary DA visit to Lewtrenchard Where: St. Peter's Church, Lewtrenchard, Okehampton EX20 4NU

Sun Sep 29, 2024 11am - 3:30pm Michaelmas Celebrations & Walk along the Baring-Gould Trail Where: St. Peter's Church, Lewtrenchard, Okehampton EX20 4NU

Sat Oct 12, 2024 All day "One Day in October" - Bell Ringing Sat Oct 12, 2024 Where: Devon

Sun Oct 13, 2024 All day Week of Events relating to Sabine Baring-Gould

Sun Oct 13, 2024 Where: St. Peter's Church, Lewtrenchard, Okehampton EX20 4NU

Tue Oct 15, 2024 7pm - 8:30pm Lewdown Past talk on The Pinwill Sisters at Lewtrenchard church Where: St. Peter's Church, Lewtrenchard, Okehampton EX20 4NU

Sat Oct 19, 2024 7:30pm - 10:45pm Singing Songs of Expectation Where: Tavistock Parish Church, 5A Plymouth Rd, Tavistock PL19 8AU

Sun Oct 20, 2024 8am - 8pm "Grand Hymn Singing Day" Where: St. Peter's Church, Lewtrenchard, Okehampton EX20 4NU

**Website:** <https://www.sbgcentenary.co.uk/>

## Reflections of a Steam Fireman

After passing firing school I was put on the coal stage where locos were coaled and fires cleaned of clinker or removed of all the fire if it was in for repair. Smokeboxes were cleaned and ashpans raked out. Then you moved down to the table gang, you had to look after the USA tank and shunt the loco engines that were being repaired, examined or washed out. Also the store wagon would have to be unloaded, engine tenders filled and placed in order in the running shed.

In the old man gang one of the duties was freight to Aldershot, shunt the yard and take ordinance to government siding, place the wagon in the correct spot and when finished we were give a Military breakfast of a full English.

My first firing turn on a passenger train was a Basingstoke to Waterloo all station to Woking then semi fast to London I asked the driver any tips with a 4.6.0 standard 3mt he said there's a hole - chuck coal into it. We departed, engine steaming well and I realised as we got nearer to Waterloo I would have to let the fire dampen down otherwise I would be in trouble at Waterloo with black smoke and excess steam, the engine swayed about and I kept missing the firehole door spending time cleaning the footplate. The driver then said stop firing nipper let the water drop in the boiler and sit down and enjoy the ride.



After this turn the foreman told me to get a U class ready and work with a driver to Reading, it was thick fog all the way and I will never forget the smell as we came down the bank into Reading the Jacobs biscuit factory, when we stopped at the station a lady came up and gave the driver 10 shillings for getting to Reading safely, he gave me 5 shillings a few months earlier I was a cleaner on £4.00 a week.

In 1965 I was given a turn with u class 31809 to work a passenger to Reading then to Redhill then work the Snodland cement to

Guildford a lot of older drivers had refused this duty because it was too heavy for a U class, but I had a young driver who said if we can get up the bank to Reigate we will be ok, he then told the guard to pull the string on the vacuum chambers so brakes were not dragging,

We were ready, signal came off and away we go ,up the bank to Reigate down to Betchworth and then as fast as the U would go down to Deepdene we were going for it through Dorking station and up the bank double regulator lever in the corner maximum cut off no more to give as we approached the top of the bank. At Welcome Bridge a small crowd had formed they had heard that my driver was going to have a go, we were at walking pace but we had made it this 1927 engine was full of steam, then down the bank to Gomshall and onto Guildford.

**Tom**

# Calendar A

If you do not know which calendar to use please check our website for your collection day.

My normal collection day is:

- ☐ Recycling boxes, household and food waste collection every week
- ☐ Garden waste subscription collection week (please see your collection over 52 week period. See our website in December for dates of suspension)
- ☐ Refuse collection week ☐ Bank Holiday

Any date underlined in black will have a day change this week. Please see below.

APRIL 2024						
M	T	W	T	F		
<b>R</b>	<b>G</b>	<b>1</b>	<b>2</b>	<b>3</b>	<b>4</b>	<b>5</b>
<b>R</b>	<b>F</b>	<b>8</b>	<b>9</b>	<b>10</b>	<b>11</b>	<b>12</b>
<b>R</b>	<b>G</b>	<b>15</b>	<b>16</b>	<b>17</b>	<b>18</b>	<b>19</b>
<b>R</b>	<b>F</b>	<b>22</b>	<b>23</b>	<b>24</b>	<b>25</b>	<b>26</b>
<b>R</b>	<b>G</b>	<b>29</b>	<b>30</b>			

MAY 2024						
M	T	W	T	F		
<b>R</b>	<b>G</b>		<b>1</b>	<b>2</b>	<b>3</b>	
<b>R</b>	<b>F</b>	<b>6</b>	<b>7</b>	<b>8</b>	<b>9</b>	<b>10</b>
<b>R</b>	<b>G</b>	<b>13</b>	<b>14</b>	<b>15</b>	<b>16</b>	<b>17</b>
<b>R</b>	<b>F</b>	<b>20</b>	<b>21</b>	<b>22</b>	<b>23</b>	<b>24</b>
<b>R</b>	<b>G</b>	<b>27</b>	<b>28</b>	<b>29</b>	<b>30</b>	<b>31</b>

JUNE 2024						
M	T	W	T	F		
<b>R</b>	<b>F</b>	<b>3</b>	<b>4</b>	<b>5</b>	<b>6</b>	<b>7</b>
<b>R</b>	<b>G</b>	<b>10</b>	<b>11</b>	<b>12</b>	<b>13</b>	<b>14</b>
<b>R</b>	<b>F</b>	<b>17</b>	<b>18</b>	<b>19</b>	<b>20</b>	<b>21</b>
<b>R</b>	<b>G</b>	<b>24</b>	<b>25</b>	<b>26</b>	<b>27</b>	<b>28</b>

JULY 2024						
M	T	W	T	F		
<b>R</b>	<b>F</b>	<b>1</b>	<b>2</b>	<b>3</b>	<b>4</b>	<b>5</b>
<b>R</b>	<b>G</b>	<b>8</b>	<b>9</b>	<b>10</b>	<b>11</b>	<b>12</b>
<b>R</b>	<b>F</b>	<b>15</b>	<b>16</b>	<b>17</b>	<b>18</b>	<b>19</b>
<b>R</b>	<b>G</b>	<b>22</b>	<b>23</b>	<b>24</b>	<b>25</b>	<b>26</b>
<b>R</b>	<b>F</b>	<b>29</b>	<b>30</b>	<b>31</b>		

AUGUST 2024						
M	T	W	T	F		
<b>R</b>	<b>F</b>		<b>1</b>	<b>2</b>		
<b>R</b>	<b>G</b>	<b>5</b>	<b>6</b>	<b>7</b>	<b>8</b>	<b>9</b>
<b>R</b>	<b>F</b>	<b>12</b>	<b>13</b>	<b>14</b>	<b>15</b>	<b>16</b>
<b>R</b>	<b>G</b>	<b>19</b>	<b>20</b>	<b>21</b>	<b>22</b>	<b>23</b>
<b>R</b>	<b>F</b>	<b>26</b>	<b>27</b>	<b>28</b>	<b>29</b>	<b>30</b>

SEPTEMBER 2024						
M	T	W	T	F		
<b>R</b>	<b>G</b>	<b>2</b>	<b>3</b>	<b>4</b>	<b>5</b>	<b>6</b>
<b>R</b>	<b>F</b>	<b>9</b>	<b>10</b>	<b>11</b>	<b>12</b>	<b>13</b>
<b>R</b>	<b>G</b>	<b>16</b>	<b>17</b>	<b>18</b>	<b>19</b>	<b>20</b>
<b>R</b>	<b>F</b>	<b>23</b>	<b>24</b>	<b>25</b>	<b>26</b>	<b>27</b>
<b>R</b>	<b>G</b>	<b>30</b>				

OCTOBER 2024						
M	T	W	T	F		
<b>R</b>	<b>G</b>	<b>1</b>	<b>2</b>	<b>3</b>	<b>4</b>	
<b>R</b>	<b>F</b>	<b>7</b>	<b>8</b>	<b>9</b>	<b>10</b>	<b>11</b>
<b>R</b>	<b>G</b>	<b>14</b>	<b>15</b>	<b>16</b>	<b>17</b>	<b>18</b>
<b>R</b>	<b>F</b>	<b>21</b>	<b>22</b>	<b>23</b>	<b>24</b>	<b>25</b>
<b>R</b>	<b>G</b>	<b>28</b>	<b>29</b>	<b>30</b>	<b>31</b>	

NOVEMBER 2024						
M	T	W	T	F		
<b>R</b>	<b>G</b>				<b>1</b>	
<b>R</b>	<b>F</b>	<b>4</b>	<b>5</b>	<b>6</b>	<b>7</b>	<b>8</b>
<b>R</b>	<b>G</b>	<b>11</b>	<b>12</b>	<b>13</b>	<b>14</b>	<b>15</b>
<b>R</b>	<b>F</b>	<b>18</b>	<b>19</b>	<b>20</b>	<b>21</b>	<b>22</b>
<b>R</b>	<b>G</b>	<b>25</b>	<b>26</b>	<b>27</b>	<b>28</b>	<b>29</b>

DECEMBER 2024						
M	T	W	T	F		
<b>R</b>	<b>F</b>	<b>2</b>	<b>3</b>	<b>4</b>	<b>5</b>	<b>6</b>
<b>R</b>	<b>G</b>	<b>9</b>	<b>10</b>	<b>11</b>	<b>12</b>	<b>13</b>
<b>R</b>	<b>F</b>	<b>16</b>	<b>17</b>	<b>18</b>	<b>19</b>	<b>20</b>
<b>R</b>	<b>G</b>	<b>23</b>	<b>24</b>	<b>25</b>	<b>26</b>	<b>27</b>
<b>R</b>	<b>F</b>	<b>30</b>	<b>31</b>			

JANUARY 2025						
M	T	W	T	F		
<b>R</b>	<b>F</b>	<b>1</b>	<b>2</b>	<b>3</b>		
<b>R</b>	<b>G</b>	<b>6</b>	<b>7</b>	<b>8</b>	<b>9</b>	<b>10</b>
<b>R</b>	<b>F</b>	<b>13</b>	<b>14</b>	<b>15</b>	<b>16</b>	<b>17</b>
<b>R</b>	<b>G</b>	<b>20</b>	<b>21</b>	<b>22</b>	<b>23</b>	<b>24</b>
<b>R</b>	<b>F</b>	<b>27</b>	<b>28</b>	<b>29</b>	<b>30</b>	<b>31</b>

FEBRUARY 2025						
M	T	W	T	F		
<b>R</b>	<b>G</b>	<b>3</b>	<b>4</b>	<b>5</b>	<b>6</b>	<b>7</b>
<b>R</b>	<b>F</b>	<b>10</b>	<b>11</b>	<b>12</b>	<b>13</b>	<b>14</b>
<b>R</b>	<b>G</b>	<b>17</b>	<b>18</b>	<b>19</b>	<b>20</b>	<b>21</b>
<b>R</b>	<b>F</b>	<b>24</b>	<b>25</b>	<b>26</b>	<b>27</b>	<b>28</b>

MARCH 2025						
M	T	W	T	F		
<b>R</b>	<b>G</b>	<b>3</b>	<b>4</b>	<b>5</b>	<b>6</b>	<b>7</b>
<b>R</b>	<b>F</b>	<b>10</b>	<b>11</b>	<b>12</b>	<b>13</b>	<b>14</b>
<b>R</b>	<b>G</b>	<b>17</b>	<b>18</b>	<b>19</b>	<b>20</b>	<b>21</b>
<b>R</b>	<b>F</b>	<b>24</b>	<b>25</b>	<b>26</b>	<b>27</b>	<b>28</b>
<b>R</b>	<b>G</b>	<b>31</b>				

APRIL 2025						
M	T	W	T	F		
<b>R</b>	<b>F</b>	<b>1</b>	<b>2</b>	<b>3</b>		
<b>R</b>	<b>G</b>	<b>6</b>	<b>7</b>	<b>8</b>	<b>9</b>	<b>10</b>
<b>R</b>	<b>F</b>	<b>13</b>	<b>14</b>	<b>15</b>	<b>16</b>	<b>17</b>
<b>R</b>	<b>G</b>	<b>20</b>	<b>21</b>	<b>22</b>	<b>23</b>	<b>24</b>
<b>R</b>	<b>F</b>	<b>27</b>	<b>28</b>	<b>29</b>	<b>30</b>	<b>31</b>

MAY 2025						
M	T	W	T	F		
<b>R</b>	<b>F</b>	<b>1</b>	<b>2</b>	<b>3</b>		
<b>R</b>	<b>G</b>	<b>6</b>	<b>7</b>	<b>8</b>	<b>9</b>	<b>10</b>
<b>R</b>	<b>F</b>	<b>13</b>	<b>14</b>	<b>15</b>	<b>16</b>	<b>17</b>
<b>R</b>	<b>G</b>	<b>20</b>	<b>21</b>	<b>22</b>	<b>23</b>	<b>24</b>
<b>R</b>	<b>F</b>	<b>27</b>	<b>28</b>	<b>29</b>	<b>30</b>	<b>31</b>

JUNE 2025						
M	T	W	T	F		
<b>R</b>	<b>F</b>	<b>1</b>	<b>2</b>	<b>3</b>		
<b>R</b>	<b>G</b>	<b>6</b>	<b>7</b>	<b>8</b>	<b>9</b>	<b>10</b>
<b>R</b>	<b>F</b>	<b>13</b>	<b>14</b>	<b>15</b>	<b>16</b>	<b>17</b>
<b>R</b>	<b>G</b>	<b>20</b>	<b>21</b>	<b>22</b>	<b>23</b>	<b>24</b>
<b>R</b>	<b>F</b>	<b>27</b>	<b>28</b>	<b>29</b>	<b>30</b>	<b>31</b>

JULY 2025						
M	T	W	T	F		
<b>R</b>	<b>F</b>	<b>1</b>	<b>2</b>	<b>3</b>		
<b>R</b>	<b>G</b>	<b>6</b>	<b>7</b>	<b>8</b>	<b>9</b>	<b>10</b>



# Calendar B

If you do not know which calendar to use please check our website for your collection day.

APRIL 2024						
M	T	W	T	F		
<b>R</b>	<b>G</b>	1	2	3	4	5
<b>R</b>	<b>G</b>	8	9	10	11	12
<b>R</b>	<b>G</b>	15	16	17	18	19
<b>R</b>	<b>G</b>	22	23	24	25	26
<b>R</b>	<b>G</b>	29	30			

MAY 2024						
M	T	W	T	F		
<b>R</b>	<b>G</b>		1	2	3	
<b>R</b>	<b>G</b>	6	7	8	9	10
<b>R</b>	<b>G</b>	13	14	15	16	17
<b>R</b>	<b>G</b>	20	21	22	23	24
<b>R</b>	<b>G</b>	27	28	29	30	31

JUNE 2024						
M	T	W	T	F		
<b>R</b>	<b>G</b>	3	4	5	6	7
<b>R</b>	<b>G</b>	10	11	12	13	14
<b>R</b>	<b>G</b>	17	18	19	20	21
<b>R</b>	<b>G</b>	24	25	26	27	28

JULY 2024						
M	T	W	T	F		
<b>R</b>	<b>G</b>	1	2	3	4	5
<b>R</b>	<b>G</b>	8	9	10	11	12
<b>R</b>	<b>G</b>	15	16	17	18	19
<b>R</b>	<b>G</b>	22	23	24	25	26
<b>R</b>	<b>G</b>	29	30	31		

AUGUST 2024						
M	T	W	T	F		
<b>R</b>	<b>G</b>			1	2	
<b>R</b>	<b>G</b>	5	6	7	8	9
<b>R</b>	<b>G</b>	12	13	14	15	16
<b>R</b>	<b>G</b>	19	20	21	22	23
<b>R</b>	<b>G</b>	26	27	28	29	30

SEPTEMBER 2024						
M	T	W	T	F		
<b>R</b>	<b>G</b>	2	3	4	5	6
<b>R</b>	<b>G</b>	9	10	11	12	13
<b>R</b>	<b>G</b>	16	17	18	19	20
<b>R</b>	<b>G</b>	23	24	25	26	27
<b>R</b>	<b>G</b>	30				

OCTOBER 2024						
M	T	W	T	F		
<b>R</b>	<b>G</b>	1	2	3	4	
<b>R</b>	<b>G</b>	7	8	9	10	11
<b>R</b>	<b>G</b>	14	15	16	17	18
<b>R</b>	<b>G</b>	21	22	23	24	25
<b>R</b>	<b>G</b>	28	29	30	31	

NOVEMBER 2024						
M	T	W	T	F		
<b>R</b>	<b>G</b>				1	
<b>R</b>	<b>G</b>	4	5	6	7	8
<b>R</b>	<b>G</b>	11	12	13	14	15
<b>R</b>	<b>G</b>	18	19	20	21	22
<b>R</b>	<b>G</b>	25	26	27	28	29

DECEMBER 2024						
M	T	W	T	F		
<b>R</b>	<b>G</b>	2	3	4	5	6
<b>R</b>	<b>G</b>	9	10	11	12	13
<b>R</b>	<b>G</b>	16	17	18	19	20
<b>R</b>	<b>G</b>	23	24	25	26	27
<b>R</b>	<b>G</b>	30	31			

JANUARY 2025						
M	T	W	T	F		
<b>R</b>	<b>G</b>		1	2	3	
<b>R</b>	<b>G</b>	6	7	8	9	10
<b>R</b>	<b>G</b>	13	14	15	16	17
<b>R</b>	<b>G</b>	20	21	22	23	24
<b>R</b>	<b>G</b>	27	28	29	30	31

FEBRUARY 2025						
M	T	W	T	F		
<b>R</b>	<b>G</b>	3	4	5	6	7
<b>R</b>	<b>G</b>	10	11	12	13	14
<b>R</b>	<b>G</b>	17	18	19	20	21
<b>R</b>	<b>G</b>	24	25	26	27	28

MARCH 2025						
M	T	W	T	F		
<b>R</b>	<b>G</b>	3	4	5	6	7
<b>R</b>	<b>G</b>	10	11	12	13	14
<b>R</b>	<b>G</b>	17	18	19	20	21
<b>R</b>	<b>G</b>	24	25	26	27	28
<b>R</b>	<b>G</b>	31				

My normal collection day is

**R** Recycling, broken, reusable such and food waste collected every week

**G** Garden waste subscription collection week (please for one collection over festive period. See our website in December for dates of suspension)

**R** Refuse collection week ☐ Bank Holiday

Any date underlined in black will have a day change this week. Please see below.

Normal day	New day
1 - 4 April	One day late
Friday 5 April	Saturday 6 April
6 - 9 May	One day late
Friday 10 May	Saturday 11 May
27 - 30 May	One day late
Friday 31 May	Saturday 1 June
26 - 29 August	One day late
Friday 30 August	Saturday 31 August
Wed 25 December	Friday 27 December
Thursday 26 December	Saturday 28 December
Friday 27 December	Monday 30 December
Monday 30 December	Tuesday 31 December
Tuesday 31 December	Thursday 2 January
Wed 1 January	Friday 3 January
Thursday 2 January	Saturday 4 January
Friday 3 January	Monday 6 January
6 - 9 January	One day late
Friday 10 January	Saturday 11 January

# STOWFORD PLANT SALE

SUNDAY 9TH JUNE 2-5 PM  
STOWFORD PARISH HALL



TEA AND BEVERAGES AVAILABLE

MONEY TO GO TOWARDS THE REPAIR OF THE CHURCH GATES

## **Scrambled Cities**

**Kudos Winner**

The winners were Liam & Frankie who emailed Ed. the following on May 30th:

**LONDON / BEIJING  
TOKYO / ROME  
MOSCOW / BERLIN  
MADRID / PARIS**

## **May's Letter Boxed**

**A possible solution**

**VOWEL  
LOFT  
TWINS  
SAKE**

- 1. My IQ test results came back. They were negative.**
- 2. Why can't you trust an atom? Because they make up literally everything.**
- 3. Why was six afraid of seven? Because seven eight nine.**
- 4. I never knew what happiness was until I got married—and then it was too late.**
- 5. Why are so many blonde jokes one-liners? So brunettes can remember them.**

## **BRAIN TEASER**

You are in a room that has three switches and a closed door. The switches control three light bulbs on the other side of the door. Once you open the door, you may never touch the switches again. How can you definitively tell which switch is connected to each of the light bulbs?

**Email your answer to the editor - first to submit wins the kudos of a mention next month!**

- 1. What starts with a T, ends with a T, and has T in it?**
- 2. Two fathers and two sons are in a car, yet only three people are in the car. How?**
- 3. What begins with an "e" and only contains one letter?**

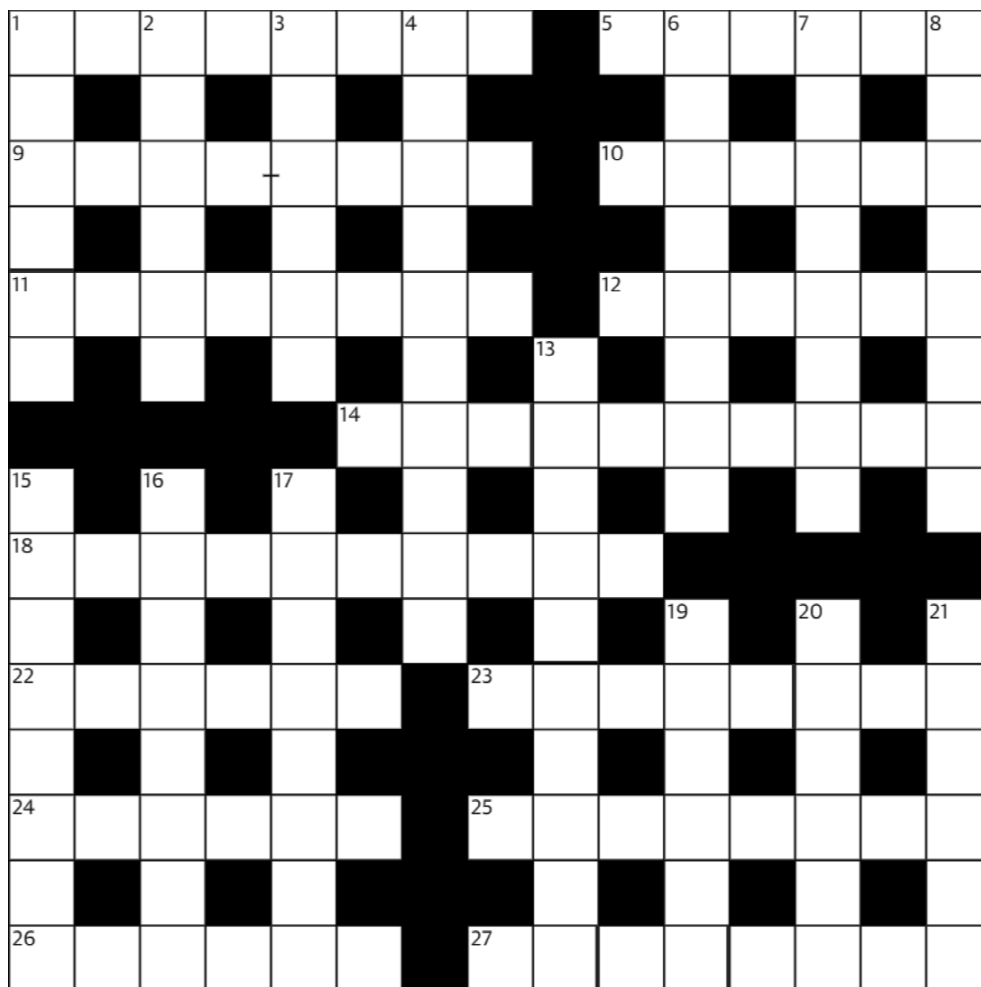
**Answers next month...**

## **8-11 Competition**

**Write a Poem or Limerick of no more than 5 lines.**

**No entries! 😞**

# Cryptic Crossword



## Across

- 1 Fail this manoeuvring, causing skid (8)
- 5 Summons late in the day succeeded securing approval (6)
- 9 Such milk for your health (4-4)
- 10 In hearing, one safely securing capital (6)
- 11 One following round for each amateur (8)
- 12 Chanced to get fine gospel record eventually (6)
- 14 Train tickets found when darkness lifts? (3,7)
- 18 Rare animal fur I flaunted (10)
- 22 Fungal disease coats small English apple (6)
- 23 Horror film must occasionally intimidate (5,3)
- 24 God Michelangelo himself captures (6)
- 25 One sharing a spine with me? (8)
- 26 For whom Imogen compiles, ensconced here? (6)
- 27 Very boring in hospital department recently (2,2,4)

## Down

- 1 Join parade and collapse (4,2)
- 2 Insect trapper upset married students once (6)
- 3 In plants uranium has leaked across – it's all over! (6)
- 4 Conclude New York is full? Like hell (10)
- 6 I let navy collapse into sleaze (8)
- 7 Extremely keen on money for workers in yard (8)
- 8 Truss at last out of mind playing a blinder (8)
- 13 Parts of Norfolk and Beds may not understand this speech? (5,5)
- 15 Systematically searches for coins abroad (8)
- 16 Branch kills American comic (8)
- 17 Suffragette and me twice going head to head over policy (8)
- 19 An unkempt person, namely Trump (6)
- 20 Judges predecessor a heavyweight (6)
- 21 Run into bar but eat nothing (6)



# CALL MY BLUFF

CAN YOU SPOT THE ANTIQUE FROM THE FAKE?

**26TH JUNE, 7PM**

**AN EVENING WITH**

*Bearnes, Hampton & Littlewoods Auctioneers of Exeter*

**AT LEWDOWN CRICKET PAVILION**

- 🔨 **DOORS OPEN AT 6.30PM**
- 🔨 **ADULTS £10 EACH**
- 🔨 **KIDS £5 EACH**
- 🔨 **COMPLIMENTARY CHEESE & BISCUITS PER TEAM**
- 🔨 **BAR, SNACKS, RAFFLE**
- 🔨 **PRIZE FOR THE WINNING TEAM**
- 🔨 **SUGGESTED TEAM SIZE OF AROUND 6**
- 🔨 **TICKETS AVAILABLE FROM:**

**THE BLUE LION   ALDER VINEYARD   CLOVELLY INN  
LEW TRENCHARD PRIMARY   LEWDOWN POST OFFICE  
OR PAYPAL - FLSFUNDRAISING@HOTMAIL.COM**

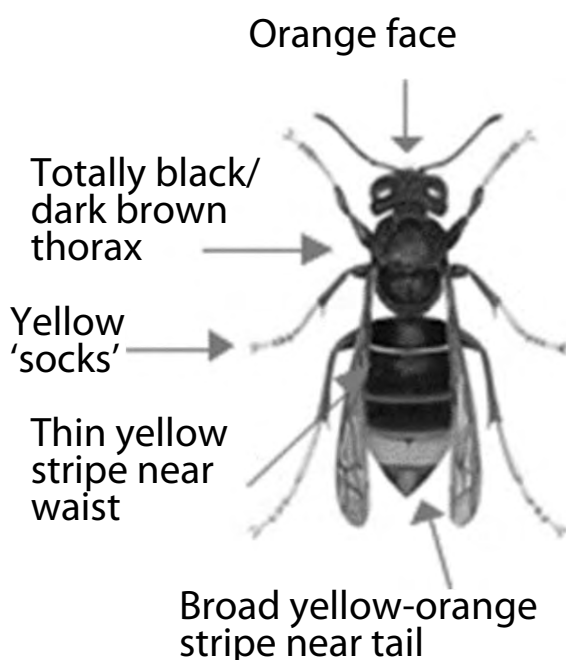


# Be Alert for Asian hornets!

Asian or yellow-legged hornets (scientific name *Vespa velutina*) were accidentally introduced into France in around 2004. Now they have spread through much of Western Europe. They are serious predators of honey bees, and also attack bumblebees, solitary bees and other insects.

They defend their nests aggressively and will attack anyone who gets too close: **never approach a nest**. Since 2016, there have been sightings of the Asian hornet in the UK, and a few nests have been found.

## Asian hornet



**If you see this insect  
PLEASE REPORT IT!**

Asian hornets are generally smaller (25-30 mm head to tail) than our native hornet, the European hornet

(*Vespa crabro*), which is 30-35 mm head to tail (but can seem much bigger!).

They are easy to distinguish because Asian hornets are mostly dark brown/black, with yellow 'socks' and an orange-yellow band near the tail. Native hornets look like very large wasps, with brown legs and bright yellow and black/brown markings. Native hornets fly both night and day, while Asian hornets fly only during the day.



Asian hornet  
*REPORT*



Native hornet  
*do not report*

The best way to report the Asian hornet is by using the app: **'Asian Hornet Watch'**, or you can send photos and location details to: **[alertnonnative@ceh.ac.uk](mailto:alertnonnative@ceh.ac.uk)**

For identification help and advice in your area, go to [www.bbka.org.uk](http://www.bbka.org.uk) (British Beekeepers' Association), hover over Asian Hornet and choose Asian Hornet Action Team map from the dropdown menu. Click on a pin on the map for local contact details.



MOUNT  
KELLY  
CHORAL SOCIETY

# Summer Concert

## Feel the Spirit by John Rutter

Saturday 22<sup>nd</sup> June 2024 at 19:30

Methodist Church, Chapel Street, Tavistock, PL19 8DX

Free entry for all

**Bianca Phillips** - Mezzo-Soprano

**Mary Mazur-Park** - Piano

**Dan Robson** - Conductor

Duration approx. 50 mins



Our annual **Bluebell event** with its cream teas and Pixie Hunt at the Forgotten Garden on **Saturday 11th May 2pm to 4pm** was very successful with excellent weather and thank you to all that helped and attended.

The **Annual General Meeting** of the Friends of the Forgotten Garden of Lewtrenchard is being held at **7.30pm on Monday 17 June at the Lewdown Victory Hall** followed with a talk on gardening by **Peter van Delft** who spent many years as a nurseryman.

**St Lukes (Plymouth) will have an Open Gardens** involving the Forgotten Woodland Garden of Lewtrenchard and the Parish church of St Peter's with its Exhibition of the Centenary of the death of the Reverend Sabine Baring-Gould on **12 – 4pm Sunday 11th August**. It is hoped that it will be well attended.

For more details and updates see our website:

<https://www.forgottengarden.co.uk/category/news/>



Monday to Friday  
8.45am to 3.15pm  
2-5 year olds

Led by Lisa Broadbridge  
Early Years Teacher

Please phone for availability  
Early Years Foundation Unit with plenty  
of safe outdoor space.

We accept 2gether funding for 2 year  
olds and Early Years Education Funding  
for 3 year olds.

Respect  
Kindness  
Responsibility

## FLS

Friends of Low Trenchard C of E Primary School

We have an amazing team that  
fundraise to enhance our children's  
learning journey. Please see our FLS  
Facebook page, school website and  
local adverts to support our fantastic  
school.

Bingo ~ Bake sale ~ summer/winter fair ~ raffles ~  
jumble sale ~ sponsored activities and much more!

## Wrap around care

Available for 3-11 year olds

**£2 per hour (1/2 hour bookings available)**

8am to 8.40 am breakfast club £2 per session

3.15pm to 5.15pm (4.15pm Fridays) after school care including snacks.

For more information, contact the school office on  
01566 783273

[www.lewtrenchard.devon.sch.uk](http://www.lewtrenchard.devon.sch.uk)

Email [lewtrenchard@andaras.org](mailto:lewtrenchard@andaras.org)







# Blue Lion Inn, Lewdown

Charlie, Nicky, Charlotte, Georgia, Jonty & Alfie  
Welcome you to our Family Friendly Pub

01566 783238



*Public House offering good food, real ales,  
live music, pool, skittles, darts and BT Sports*

*For upcoming live music & quizzes etc. follow us on Facebook  
Search for 'blue lion inn'*



## Mobile Foot Care

*Sally Isaac S.A.C. Dip. FHPT/FHPP*



*Gentle and professional  
foot care  
in your own home*

*If you suffer discomfort from*

- corns
- cracked heels
- callus
- ingrown toenails
- thickened/tough nails

*or just have difficulty cutting  
your toenails then  
please ring me*

*I'll come to you!*

Telephone Sally  
07961 076 168

WELCOME TO  
LOBHILL FARMHOUSE  
BED AND BREAKFAST  
and HOLIDAY COTTAGE



Lobhill Farmhouse, Lewdown  
EX20 4DT

Tel: 01566 783542  
07817 244687

Jane Colwill

[www.lobhillbedandbreakfast.co.uk](http://www.lobhillbedandbreakfast.co.uk)



**07734 956925**

8- Seater Vehicle Available

*Anytime - Anyplace - Anywhere*

AIRPORT • TRAIN STATION  
SHOPPING • DOCTOR

Prompt Reliable Honest  
FAMILY RUN COMPANY  
24/7 365 days

# TAMAR COSMETICS DOCTOR

Medical Aesthetics Clinic  
Dr Sarah Michaels  
MBBS, BA (Hons), MRCGP

Discreet Clinic in Lifton  
Close to Launceston  
Free Parking

sarah@tamarcosmeticsdoctor.co.uk  
07830888557  
www.tamarcosmeticsdoctor.co.uk  
Find me on Facebook, WhatsApp and Instagram

## LOGS



SEASONED  
HARD WOOD,  
SPLIT TO YOUR  
REQUIREMENTS.

DELIVERED  
LOCALLY

07942 073204

[the2relics@gmail.com](mailto:the2relics@gmail.com)

## PLUMBER

**EST 40 Years**

**Lewdown  
& District**

**Tel: 01566 783562**

**Mobile: 07731878510**

# Tim Dixon

**Domestic Plumbing &  
Bathroom Fitting**

**01566 784028**

**07903535881**

**careful & reliable service**

**timdixonplumbing.co.uk**

# Megan's Home Cleaning!

**10+ years in the  
Business**

**Earth Friendly  
Cleaning solutions  
Weekly & bi-weekly  
Slots available**

**Tel: 07955 805 271**

## **MARK CHIVERS - SOLE TRADER**

Highly skilled carpenter with over 40 years  
experience, including but not limited to:

### ***INTERIOR***

**KITCHEN • BATHROOMS • BEDROOMS  
FLOORING • DOORS • WALLS**

### ***EXTERIOR***

**FASCIA & SOFFIT • GUTTERING & DOWNPIPE  
WINDOWS (including sash repairs) • FENCING**

**FREE ESTIMATES - UNDER NO OBLIGATION**

The best price and best service for your budget  
*Please Do Not Hesitate To Contact Me With Any Enquiries:*



**CARPENTRY & JOINERY**

**Mobile: 07804 104812  
(8am-7pm)**

**Home: 01566 783743  
(9am-5pm)**

**Email any time:  
m.c.carpentry@outlook.com**





☎ 07836 760060

☰ [BrowningsCarpentry@gmail.com](mailto:BrowningsCarpentry@gmail.com)

**All Aspects of Bespoke  
Carpentry & Joinery**

📘 **Browning's Carpentry & Joinery**

## Chair Yoga for Seniors

with Yogajeanie

**Chair yoga helps with**  
**Muscle toning**  
**Reduced stress levels**  
**better breathing habits**  
**better sleep**  
**overall sense of well-being**  
*It's fun too!*

**Interested?**  
**Just come along in comfy clothing**

**At Lewdown Village Hall**  
**Thursday's**  
**from 10:00 am -11:00 am**  
**£7 per class**

For more information contact  
[jeanharris50@hotmail.com](mailto:jeanharris50@hotmail.com)  
Mobile 07929 278788



## **R Mears & Sons**

### **Chimney Sweeps & Stove Installation**

**Established over 30 years**

**Vac Brush. Full CCTV investigations.**

**Pots, Cowlings & Bird Protection fitted. Chimneys Lined.**

**Solid Fuel Appliances, Rayburns, Woodburners,**  
**Stoves, etc serviced. Fully Insured.**

**Tel: 01840 261221 Tavistock: 01822 664554**

**Mob: 07737 533392**

**[www.sweepdevon.com](http://www.sweepdevon.com)**





Ella Payne Gardens  
**Design & Maintenance**  
 RHS Qualified  
 07968 170130



QUALITY OIL FIRED APPLIANCE  
 MAINTENANCE AT  
 COMPETITIVE PRICES

CALL MARK  
 ☎ 0781 4976 076 OR 01566 784298

## MARKSTONE GRANITE

*We don't just sell granite.....*

- \* **Slate:** Flooring, Worktops, Sills, Hearths, Tables & Benches.
- \* **Oak Beams, Sleepers, Barrels & Boards** (perfect for shelves)
- \* **Natural Stone Paving & Cobbles.**
  - \* **Porcelain Paving & Flooring.**
  - \* **Reclaimed Bricks**
- \* **Granite Quoins, Cobbles, Lintels, Steps, Plinths, Posts & Troughs**



Tel. 01566 784289 Lifton Devon.  
[www.markstonegranite.co.uk](http://www.markstonegranite.co.uk)

## TAVISTOCK STOVES & FIREPLACES

Woodburning, Multifuel,  
 Electric & Gas Stoves.



*In our Showroom:*

- Live working displays
- Maintenance products – rope, bricks, glass, cement, paint etc
- Fireplace accessories



*Our Services Include:*

- Free site survey.
- Full installation service.
- Repair & maintenance.



4 Vigo Bridge Road, Tavistock. PL19 0EY  
 Tel. 01822 487700 [sales@tavistoves.co.uk](mailto:sales@tavistoves.co.uk)  
[www.tavistoves.co.uk](http://www.tavistoves.co.uk)

## COLOUR PRINTING & COPYING

This service is available for a minimum of 10 copies at a charge of 5p per single copy or 7p per double sided copy.

## FOR SALE COPIER PAPER £4.75 per ream

The Community NewsLink purchases its paper in bulk and as such is able to access competitively priced materials. We can currently offer our readers copier paper for the special price of £4.75 per ream, a vast saving on High Street prices. We recommend you phone to check availability and arrange a convenient time to collect.

Please Contact: **Terry Southcott, Fairview Bungalow, Lewdown**  
**Phone 01566 783079. or M 07831309666**

All proceeds will go to The Lewdown Residents Association  
who produce The Community NewsLink.

## Milton Abbot Grouped Parish Council

Please see our website for lots of information  
about Milton Abbot, Chillaton, Bradstone, Dunterton and the surrounding  
areas, along with a list of the local Parish Councillors

**[www.magpc.co.uk](http://www.magpc.co.uk)**



For bookings and enquiries contact Julie Chick Tel: 01566 783223

Email: [stowfordparishhall@gmail.com](mailto:stowfordparishhall@gmail.com)

A Defibrillator is located in the porch - Postcode EX20 4BZ

Charity No: 1020031

# GRAHAM TOWNSEND GROUNDWORKS

**WATER DRAINAGE & GROUNDWORK SPECIALISTS**

**WATER LEAKS & RENEWALS  
SEPTIC TANKS INSTALLED**

**DRAINS CLEARED  
TREATMENT PLANT  
ALL FENCING WORK  
DEMOLITION**

**GROUNDWORKS  
DRAINS REPLACED  
MOLING (No Dig)  
PATIOS DRIVES**

**FREE ESTIMATES**

**TEL: 01837 657687 / 01566 783788**

**MOBILE: 07866 465093**

**email: [info@gtownsendgroundworks.com](mailto:info@gtownsendgroundworks.com)**

## **Roger's Painting & Decorating Services**

**Interior & Exterior Work  
Traditional & Modern Techniques  
City & Guilds Qualified  
30 years Experience**



**Mobile: 07783 819171**

## **Septic Tanks**

### **Emptied**

**Phone: 01805 601203**

**Mobile: 07831 241531**

**Leave a message, we will re-  
turn your call, or email:**

**[hearnhaulageltd@outlook.com](mailto:hearnhaulageltd@outlook.com)**

**Small Lorry  
Available**

**Card payment accepted**

**Hearn Haulage Ltd**

**TORQUAY TAXIS Ltd**

**AIR AND SEA PORT  
TRANSFERS**

luxury comfortable transport

Door to door service

All air and sea ports covered

Reliable service

Competitive prices

18 years established

Call Jared Spencer

07830360341

01566 451442

**ROGER  
WONNACOTT**  
GROUND & GARDEN MAINTENANCE

- ▲ GENERAL GARDEN MAINTENANCE
- ▲ SERVICES RENEWED & REPLACED
- ▲ LEAK REPAIRS & TROUBLESHOOTING
- ▲ MOLE / GRUNDOMAT WORK UNDERTAKEN
- ▲ MOLE & COMPRESSOR AVAILABLE



- ▲ COMPLETE JOB PRICING OR HOURLY RATES
- ▲ FULLY INSURED & BASED NEAR LAUNCESTON

**07919 912776**

rwonnacott@hotmail.com



supplier of  
**HARDWOOD LOGS**  
cut and split to your  
requirements

**Tel. Colin Bennett:**

**01822 487259**

**Mobile:**

**07523172369**

**Lewdown  
Victory Hall**

Bookings contact

Roy Stacey

on 01566 783267



**Broadbury Landcare**

All aspects of Garden Maintenance  
and Landscaping

Fully Qualified Fully Insured Free Estimates

10 Years Experience

**Andrew Barton 07532 216216**

# **Raw Meat Animal Feed** For **Dogs & Cats**

Convenient blocks *Frozen to preserve*

**Natural, just meat or meat and bone**

No Preservatives, No Artificial Colouring's  
(both can be harmful to your animal)

## **Raw Rations Plus**



For information or to order

website: **www.rawrationsplus.co.uk**

Phone: **07831309666 or 01566783079**

Email: **sales@rawrationsplus.co.uk**

Post: Fairview Bungalow, Lewdown,  
Okehampton, Devon EX20 4DL



## **A C WORTH BUILDERS**



GENERAL BUILDERS, DECORATORS,  
PLUMBING & HEATING,  
PURPOSE MADE JOINERY etc.

Kirtonia, Vale Down, Lydford DEVON EX20 4BB

Email: [acworthbuilders@aol.com](mailto:acworthbuilders@aol.com)



Tel: 01566 783282  
Keith: 07778 471648  
Andy: 07867 524515



Registered House Builder



# RED SQUIRREL TREECARE

Chillaton - Devon  
Tree Removal - Pruning

Hedge Cutting- Seasoned Firewood

Low impact/small scale Forestry

*call Matt on 01822860651*

**e:info@redsquirreltreeecare.co.uk**



*Why Get Wet?*



**White Umbrellas**

**For**

**Your Wedding**



**To Hire**

**Tel: 01566 783342**

**All Proceeds to the Gurkha Welfare Trust**

## T C M Plumbing



Burst pipes? Tap dripping? Overflow running? Valves Leaking?

Radiators not getting hot? Gutters blocked or leaking?

Based locally at Inwardleigh we cover the surrounding areas

Helping you with your plumbing needs no matter how small

**Contact Tim Morgan**

**Tel: 01837 810599**

**Mobile: 07838 901803**

Or visit our website [www.tcmlumbing.org.uk](http://www.tcmlumbing.org.uk)  
to see what we can do for you





# Asian Hornet REPORT



## Draw Results

May

£15 Ian Prout No. 74

£5 Peter Jones No.59

£5 Dave Pearse No. 144



## Upholstery Service



A New Life for your  
Favourite Furniture

Collection & Delivery Available

**Call:** Linda 07484 093494 or **Email:** sales@fabricandfurniture.co.uk

 @fabricandfurniture  fabricandfurniture

[www.fabricandfurniture.co.uk](http://www.fabricandfurniture.co.uk)

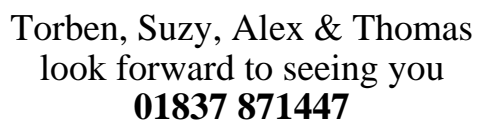


Enjoy the Winners Circle  
For that champion veg  
Collect your own FREE  
Proper Well Rotted Horse manure

lydvalefellponies@gmail.com



# Bratton Clovelly



**Have you got too many apples?**  
We can crush them, press, bottle  
& sterilise for Juice

01566 783266

# TOP QUALITY TOP SOIL FOR SALE

## No VAT

**01566 784645 OR 07771 823414**



**CPC TRAVEL AGENCY**

Your Friendly Local Independent Travel Agent

## **Making Your Dream Holiday's Become Reality since 2017**

**01837748055 - [enquiries@cpc.travel](mailto:enquiries@cpc.travel)**

**[www.cpc.travel](http://www.cpc.travel)**

**16 Red Lion Yard, Okehampton**



# S H Joinery

Granite and Quartz worktop cutting and fitting

Cut roofs

Traditional A frames

Kitchen fitting

External bi fold doors

Joinery



Steve Hunt

01566 783228

07974 799062

shjoinery@hotmail.com



**Caroline Harris**  
Bookkeeping Services



Member  
in practice

**Caroline Harris** MIAB

*Owner & Bookkeeper*

Tel: 01566 783 502

Mob: 07866 953 708

cmhbookkeeping@btinternet.com

www.cmhbookkeeping.co.uk

+ Bookkeeping

+ Self Assessments

+ Accounts Preparation

+ VAT Returns

# A.J.NASH BUILDERS LTD

Andy Nash

General Builder and Decorator



07769728425

01566783274

[sarahnash@btinternet.com](mailto:sarahnash@btinternet.com)

## TINHAY

**BUILDING SUPPLIES LTD**

Supplying quality building materials to the trade and DIY

## We're bigger than you think

### Lifton

Tinhay Mill Industrial Estate, Tinhay, Lifton, Devon PL16 0AH

Telephone: **01566 784385**

Email: [lifton@tinhaybuildingsupplies.co.uk](mailto:lifton@tinhaybuildingsupplies.co.uk)

### Launceston

Newport Industrial Estate, Launceston, Cornwall PL15 8EX

Telephone: **01566 771989**

Email: [launceston@tinhaybuildingsupplies.co.uk](mailto:launceston@tinhaybuildingsupplies.co.uk)

### Tavistock

Pixton Lane, Tavistock, Devon PL19 8DH

Telephone: **01822 619509**

Email: [tavistock@tinhaybuildingsupplies.co.uk](mailto:tavistock@tinhaybuildingsupplies.co.uk)

**FREE LOCAL DELIVERY**



**[www.tinhaybuildingsupplies.co.uk](http://www.tinhaybuildingsupplies.co.uk)**