

**THE AREA MAGAZINE FOR LEWDOWN, CHILLATON, CORYTON,
STOWFORD, MARYSTOW, THRUSHELTON, LEWTRENCHARD**

July 2024

The magazine for all that's going on in your area

**50p
donation**

Community

Newslink

Published by the Lewdown Residents Association

Registered Charity Number: 1071808

Funded by the Advertisers, Sponsors, Subscribers & Area Churches

Fire/Police/Ambulance Emergency 999

All other contact with Police 101

Police Contact/Crime Prevention PCSO Seonid Greenwood 101

Neighbourhood & Farm Watch

Horse Watch
Gina 01837 840716
Floodline 0345 988 1188

Parish Clerks

Lewdown Grouped
Peter van Delft 01566 783023
lewdowngpc.clerk@gmail.com
www.lewdowngroupedpc.org.uk
Milton Abbot Grouped
Jane Savage
clerk.magpc@outlook.com
www.magpc.co.uk
Stowford
Peter van Delft 01566 783023
stowfordclerk@gmail.com
www.stowfordparishcouncil.org.uk

West Devon MP

Geoffrey Cox 01822 612925
County Councillor
Lois Samuel 01837 851240

Borough Councillors

Milton Ford Ward
Neil Jory 01822 860342
Bridestowe Ward
Terry Southcott 01566 783079
Caroline Mott 01837 861212
Tamarside Ward
Chris Edmonds 01566 784794

Schools

Lewtrenchard 01566 783273
Lifton 01566 784288
Milton Abbott 01822 870273

Colleges

Tavistock 01822 614231
Okehampton 01837 650910
Launceston 01566 772468
01566 773918

Ring & Ride

Okehampton Area 01837 55000
Tavistock Area 01822 618028

Community Groups

Cricket Club 07847111330
Chillaton Football Club 01822 860476
Lamerton Pony Club 01822 860350
Lewdown Past 01566 783396
Lewdown Residents Assoc. 01566 783320
Lewtrenchard WI 01566 783779
Lifton Benefice Churches
Revd Philip Conway 01566 784462
liftonpriest@yahoo.com
Lifton Surgery 01566 784788
01566 784111
Red Spider Company 01409 221376
Recreation Field 01566 783367
Stowford Hall 01566 783223
Victory Hall 01566 783267
Youth Cricket 07847111330
Young Farmers 07443 461344

Advice Helplines

Citizen's Advice Bureau 08444 111444
West Devon Women's Aid 01837 55228
Age Concern 01752 665424
Health Information Line 0800 665544
Homelessness Trust 01822 615259
Parentline 0800 800222
Relate 01392 275681
Samaritans 08457 909090
Tavistock Area Support Svcs. 01822 616958
Age UK 01822 616958
Transport to Health 01822 617525
Victim Support 01822 820455
Youthwise Okehampton 01837 54004

Shop & Post Office

Copper's PO & Stores 01566 783218
Lifton PO & Stores 01566 784211

Front Cover Picture

*The Lime Trees at St George's Church,
Thrushelton.*

Photo: Andy Nash

NewsLink Archive

www.rawrationsplus.co.uk/lraarchive.html

For us to be able to print and distribute the Community NewsLink it costs approximately £500 a month.

Please make an annual payment of £5+ for yours to:

Account name: **Lewdown Residents Assoc.**
Sort code: **090154**
Account number: **97666081**

Thank you for your support

The Community NewsLink

Produced by Lewdown Residents Association

A monthly magazine providing news, information & items of interest for the areas of Lewdown, Chillaton, Coryton, Stowford, Marystowe, Thrushelton & Lewtrenchard

Established January 1999
Issue No. 280 July 2024

Editor

Simon Hedger

St. Anthony's, Stowford, Lewdown, Okehampton EX20 4BY

Telephone: 01566 783765 Email: newslink@hedger.biz

Production, Distribution and Delivery Helpers:

Tim & Sarah Nash, Andy McCarthy, Ruth Dawe, Audrey Jones, Tom Andrews, Mike Bickell, Rita Squires, Terry Southcott, Simon & Monique Hedger, Bob Holland Julie Chick, Coppers Stores, Keith Abayomi-Turner and Kathy Lawrence

All news, photographs, reports, events, etcetera for NewsLink need to be sent to the Editor by the 15th of the preceding month.

We welcome your articles / items / advertisements. Though we do our best, we cannot guarantee to publish all that is sent to us.

B&W advertising in NewsLink is free for Charity events in our local areas.

Adverts for events outside of the area and for businesses are priced as follows:

	Black & White	Colour
1/4 page	£4/month or £40/year	£6/month or £60/year
1/2 page	£8/month or £80/year	£12/month or £120/year
Whole page	£12/month or £120/year	£16/month or £160/year
Please note that advertising prices are subject to VAT at 20%		

Dear Readers. Well it's nearly the longest day, we were outside last night and it was still light enough to see, and this was 10.30pm...

We have been going to Plymouth a lot this last month. Why i hear you ask, there's nothing there.

Firstly we decided on a grey Saturday at the end of May to go somewhere we have not been to, possibly since the last century. yes the national marine aquarium. We had a very enjoyable morning, looking at all the little fishes, and some not so little sharks, in the biggest tank. Afterwards we came back to Tavistock for Fish and chips, seems a bit hypocritical, but the problem fish have is that they taste so good when wrapped in crispy batter.

Then on the 4th of June we (Nick and myself), went yet again to Home park the home of the mighty Plymouth Argyle. It was a wonderful evening, but all the action was up one end of the pitch, and i can't remember the last time there was 22000 people for a Plymouth home match. In fact there wasn't a football in site, but there was Olly Murs, and Take That. Yes I am a closet Take That fan, but the therapy is about to start. It turns out there were several there from around this area.

Will close now as Spring watch is on, and i need to water up the Tomatoes, and other stuff in the greenhouse.

I hope your Sunflowers are growing tall and strong, as ladies and gentlemen, we have a 6 year old to try to beat.

Best wishes to you all from Tim Nash, still your chairperson.

Sad news: my daughters dog recently ate a bag full of scrabble tile's. She took him to the vet's for treatment. When she called them up later, she was told there was no word yet, but results could spell disaster.

I went to the Zoo the other day, and in one exhibit, all there was, was a piece of toast on a branch. I asked the keeper what the exhibit was about. "he just said that all he knew was that it was bread in captivity".

Ps. it was Donald Ducks 90th birthday on Sunday the 12th of June. so please all raise your glasses and give a cheer to this animated icon.



The Ark



AT BRIDESTOWE METHODIST CHURCH

Is open for teas and coffee and a chat on
Tuesdays From 10am to 12 noon And 2.00pm to 4.00pm
Thursdays From 10.00am to 12 noon
Do come and join us, you will be made most welcome.
You will find us on **Launceston** Road, Bridestowe.

Asian Hornet REPORT



Draw Results

June

- ★ £50 Karen Mudge No. 103
- ★ £15 Lewdown YFC No. 44
- ★ £5 Alf Friend No. 93
- ★ £5 Rowenna Crocker No. 70

From the Mountains of Japan

No.4 - Ishikawa's Most Famous Seat

Ishikawa Prefecture, on the Japan Sea, tragically hit by the New Year's Day 2024 earthquake, is as rural as Japan gets. With a long and rugged coastline around the Noto Peninsula that shares many similarities to South West England, it is predominantly a land of fishing villages and winding coastal roads. With few major attractions and difficult to reach on public transport, it is off the beaten path for most foreign tourists.

However, like most parts of Japan, if you delve deep enough you can come up with some fantastic treasures. One such is found along the wide, arcing bay of Masuhogaura Beach. Literally, along all of it.

Built in 1987 by a team of 830 volunteers and stretching for 460.9m, the wooden bench at the top of the beach was recognised as the World's Longest Bench by Guinness World Records in 1989. Even though it has since lost its record, it is well loved by local people. It is painted pink, to honour the "sakuragai" (cherry shells), which resemble cherry blossoms, and are known for washing up on Masuhogaura Beach between November and March. Japan likes to have a top three of everything, and the beach is considered one of the top three in Japan for shell collecting.

On the day I visited with my daughter, one chilly March during the Covid crisis, when traveling to remote areas was preferable, on a beach yet to be cleaned for the summer, we found more trash in evidence than shells. Walking—or indeed, running, in my daughter's case—the length of the bench, however, I was struck by the natural beauty of the place as breakers hammered the shore and a strong wind battered the couch grass along the berm between the beach and the bench.

Like most places, famous or otherwise, the best time to visit is when it's empty, and on that particular day, we were alone with the exception of one man and his boy, who had, incidentally, been staying at the same hotel.



In a country filled with famous places of interest, the world's (second) longest bench might not be high on many tourist itineraries, but it is certainly something unique for those who venture (a long, long way) off the familiar tourist path.

Chris Ward



You may not have noticed given the weather, but it's actually summer and that means it's the cricket season! Behind the high hedges up at the recreation field more is going on than perhaps you realise. Did you know that on Friday nights we have 40+ children taking part in cricket activities? Were you aware that we have 7 teams, from U9 softball festivals through to competitive adult league cricket on 18 Saturdays across the summer? Probably not, but it does and all this is happening in the heart of our community. We are fortunate to have great

facilities and many committed volunteers who make everything happen. You are welcome to come and join us at any of our games and training nights. The bar and pavilion are usually open during games. We are always looking for players but we also need supporters and volunteers.

NEWSFLASH : 1st XI captain Keith Maynard took 7 wickets for 14 runs in our win over Whitchurch last Saturday. This meant he topped the bowling table for the whole of Devon. Well done Keith !

UPCOMING HOME GAMES :

Tue 25th June : U13's home to Tavistock (6.00pm)

Sat 29th June : 2nd XI home to Yelverton Bohemians (1.30pm)

Thur 4th July : U11's home to Holsworthy (6.00pm)

Sat 6th July : 1st XI home to Torquay 2nd XI (1.30pm)

Thur 11th July : U19's home to Cornwood

Sat 13th July : 2nd XI home to Plymouth 3rd (1.30pm)

Sun 4th July : U19's home to Ivybridge (10.00am)

Tue 16th July : U13's home to Buckland (6.00pm)

Sat 20th July : 1st XI home to Tavistock 2nd (1.30)

SUNDAY 21ST JULY : PRESIDENTS DAY

A friendly match of celebration - 2.00PM

Sun 28th July : U17's home Cornwood (10.00)

Sat 3rd August : 2nd XI home to Chagford 2nd (1.30)



Club Contact: Geraint Williams 07850 786310

Junior Cricket Coordinator: Mike Maynard 07974 756136

St George's Church Thrushelton

Due to some necessary tree surgery in the churchyard we now have an abundance of lime wood, suitable for firing or turning and also a quantity of woodchips.

We are hoping to sell for a donation to help cover the cost of the works. If anybody is interested in purchasing wood or even to just give a donation.

Please contact:
Andy 01566 783274 or Tim 01566 783320

Lewdown Grouped Parish Council **Coryton, Lewtrenchard, Marystowe and Thrushelton** Abbreviated minutes Minute No 775 20th May 2024 of Annual & Ordinary meetings held at Lewdown Victory Hall

These minutes are provisional until they signed by the chair at the next meeting of the parish council

Present: Cllrs Andrews (Chair), Southcott, Mincher, Perkins, Wilkinson, Peter van Delft (clerk). Meeting opened 7.32pm

1. Apologies for absence – Cllrs, Alexander, McSmythurs, Metherell, Yeo and Mott
2. Appointment of Officers
 - 2.1 Election of Chair – Tom Andrews – proposed by Cllr Perkins, seconded Cllr Southcott
 - 2.2 Election of Vice Chair – Terry Southcott – proposed by Cllr Wilkinson, seconded Cllr Perkins
 - 2.3 Election of Tree Warden – Brian Wilkinson – proposed by Cllr Southcott, seconded Cllr Mincher
 - 2.4 Election of 'The Ramps' Caretaker – Brian Wilkinson – proposed by Cllr Southcott, seconded Cllr Perkins
 - 2.5 Election of Snow Warden – Tom Andrews – Proposed by Cllr Perkins, seconded Cllr Mincher
 - 2.6 Election of Footpath warden – Brian Wilkinson – proposed by Cllr Andrews, seconded Cllr Southcott.

All appointments were unanimously carried.

3. Signing of Declaration of acceptance forms by officers and clerk.
4. Close of Annual Grouped Meeting at 7.44pm.

Ordinary Meeting

5. Members of the public open forum – no members were present
6. Minutes of previous meeting 774 being a true reflection of that meeting were approved and signed.

- Proposed Cllr Southcott, seconded Cllr Wilkinson, motion carried.
7. The Parish's groups and associations open forum – questions, comments and summary of the previous year activities. No representatives were present. The R.F.O. commented that over 15% of the council budget was allocated to various charities, associations, as well as grants to churches, with only a couple of requests for grant support. It was resolved that all future grant support payments would only be supported by requests for support also a report on how that money has helped those beneficiaries.
 8. Reports from Cllr Mott (WDBC) – monthly report has been circulated.
 9. Finance – Approval of Annual Governance & Accountability Returns 2023-24
 - 5.1 Confirmation of Asset register signed by the chairman, Certificate of Exemption signed by the chairman and R.F.O.
Audit - Annual Governance Statement signed by the chairman and Clerk, Accounting Statement signed by the Chairman and R.F.O. Internal Audit Report was successfully completed by Mrs Sally Spry. Confirmation of the dates for the period for the exercise of public rights has been set commencing 3rd June and ending on 12th July. All items were approved, proposed Cllr Mincher, seconded Cllr Southcott, all in favour.
 - 5.2 Payments were authorised for outstanding invoices: Dean Elliot – Grass cutting £ 60.00, P. van Delft – clerk salary (April – May) £527.25, HMRC – PAYE £90.60, Proposed Cllr Mincher, seconded Cllr Southcott, all in favour.
 - 5.3 R.F.O Reported a combined credit balance of £22,476.33 after approved payments, proposed by Cllr Southcott, seconded Cllr Wilkinson, all in favour.
 - 5.4 Bank signatory update- removal and additions – The R.F.O. reported that this still needed attention. It was resolved that Cllr Wilkinson should also be a authorized signatory, proposed Cllr Cllr Southcott, seconded Cllr Mincher, motion carried.
 10. Reports from councillors – Cllr Wilkinson reported that a request to remove some lower limbs on a Copper beech tree in Thrushelton in the vicinity of the church had been received. Cllr Wilkinson contacted WDBC for advice, no authority to remove the limbs were given. Cllr Wilkinson reported that one of the more severe potholes in Stoney Lane had been temporarily filled by a private individual. Cllr Wilkinson asked why the white lines going through Lewdown are now barely visible in places, Cllr Southcott would report it with D.H. Cllr Southcott reported that he had registered several more potholes with D.H. Cllr Southcott also reported that data from the VAS will be provided shortly. Cllr Mincher enquired what progress was being made with regard to the drainage scheme for the housing development opposite Lewtrenchard school, in response no further information was available at this time. Cllr Perkins asked if parishioners were able to report pot-holes, in response Cllr Southcott advised that the D.C.C. website has a Highways page to register issues relating to highways.
 11. Councillor vacancies for Coryton and Marystow are still available, the clerk has submitted an advertisement in the next edition of Newslink.
 12. Play area – Planning application, lease update, play equipment – Cllr Perkins reported that the committee was still waiting for information from the agent before anything more can progress.
 13. Defibrillator replacement – approval of quotations and grant applications. Cllr Mincher provided a very detailed comparison of two defibrillators that may be suitable for use. It was resolved that the 'Cardiac Science' defibrillator provided the best value and the most suitable. A new cabinet would also be required. Cllr Mincher to enquire what grants are available and if a shortfall is still apparent the council would ask for support and help to purchase a new defibrillator from community groups, associations and clubs. Cllr Southcott proposed the motion, seconded Cllr Perkins, all in favour. The clerk to send Cllr Mincher possible grant providers.
 14. Queens jubilee seat – With permission from the Recreation Ground committee it has now be placed in the grounds.
 15. Correspondence – S.W.W. response to further question regarding the inspection of the network was read out by the clerk, Cllr Alexander reported that he was not happy with its response and that it would be helpful if a councillor was present at the next inspection, the clerk to enquire.
An E.V. charging study was published by Western Gateway & Peninsula Transport, the covering letter was read by the clerk.

Meeting closed 9.20pm

Date, place and time of next meeting Monday 24th June, Lewdown Victory Hall, 7.30pm

Peter van Delft - Lewdown Grouped Parish Clerk

Stowford Parish Council



Abbreviated minutes of Ordinary meetings held on 14th May 2024

These minutes are provisional until they are signed by the chair at the next meeting of the parish council.

Meeting No 725

Present: Cllrs Leroy St Louis (Chair), Alexander, Govett, Law (vice chair), Lorna St Louis, Peter van Delft (clerk).

Meeting opened 7.32pm

Annual Meeting

1. Apologies – Cllr C. Edmonds (WDBC)
2. Appointment of Officers – the following positions were appointed unanimously.
 - 2.1 Election of Chair – Cllr Leroy St Louis – proposed Cllr Alexander, seconded Cllr Law
 - 2.2 Election of Vice Chair – Cllr Law – proposed Cllr Alexander, seconded Cllr Govett
 - 2.3 Election of Tree warden – Brian Wilkinson – proposed Cllr Leroy St Louis, seconded Cllr Lorna St
 - 2.4 Election of Snow warden – Cllr Alexander – proposed Cllr Leroy St Louis, seconded Cllr Law
3. Signing of declaration of acceptance forms were signed by all elected members and the clerk.
Close of Annual Meeting at 7.40

Ordinary Meeting

4. Members of the public open forum – one member present – He wished to express his approval of the hall improvements, no further comments on issues relating to the agenda.
5. Dispensations & declarations of interest – none provide
6. Minutes of previous meeting 723 & 724 were signed by the chair as a true and accurate records of those meetings, proposed Cllr Alexander, seconded Cllr Lorna St Louis, motion supported.
7. Finance – The following items were approved and signed by the chair, clerk and R.F.O;
 - 7.1 AGAR – Confirmation of the Asset register as per 31st March 2024, Certificate of exemption 2023 - 24, Annual Governance Statement 2023-24, Accounting Statements 2023-24, Confirmation of the dates of the period for the exercise of public rights set for 3rd June – 12th July, Proposed Cllr Alexander, seconded Cllr Govett, all in favour.
 - 7.2 Invoices due for payments were approved – Caroline Harris Bookkeeping – Payroll service £170.00, DALC – annual Subscription £121.98, Peter van Delft – clerk salary (Mar - April), £304.00, HMRC – PAYE for clerk £38.80, Community First Insurance – annual premium £152.80, Proposed Cllr Leroy St Louis, seconded Cllr Lorna St Louis, all in favour.
 - 7.3 R.F.O. reported a credit balance after payments of £5,161.57, proposed Cllr Lorna St Louis, seconded Cllr Law, all in favour.
8. Reports from Cllr Edmonds of WDBC – no report this period.
9. Reports from Councillors – Cllr Govett reported that problems with the new broadband network is being experienced, it was resolved that the chair would write a letter to the C.E.O. of Airband requesting that they investigate the reasons for the intermittent outages. Cllr Govett suggested that the hall could benefit further by promoting the hall and its facilities, the chair informed that this was on the committee's agenda after the final work for improvements has been completed.
10. Parish Councillors vacancies - two vacancies remain.
11. Correspondence – Request from Launceston Methodist Circuit – grant support for graveyard, it was resolved that due to the current financial restraints that the pc have, it was unable to help. Stowford Parish Hall committee – Annual insurance policy copy has been received by the clerk.
12. Future council projects for the parish - Bus shelter request; The chair informed that the opportunity by parishioners to raise the issue further at the Annual Parish Meeting held on 9th April was missed. The lack of attendance by parishioners to attend the APM to raise this issue suggested that there was no further interest other than the one request in 2023. The PC had obtained permission from its neighbouring parish Marystow for the positioning of a shelter opposite the former Royal Exchange Pub but with the caveat that no liability would be placed on it also that it had no funds to finance the shelter. The chair obtained a quote for a shelter, the cost of £1565 + vat + installation, the anticipated cost being over £3000. After extensive public consultation opportunities, it was resolved that the cost was too prohibitive for the use that it would currently have. Cllr Govett proposed no further action to be taken, seconded Cllr Alexander, all in favour.

Meeting closed 8.40pm

Date time and place of next meeting – 9th July 2024 – 7.30pm at Stowford Parish Hall

Lewtrenchard WI June Report

We met on June 10 for our Annual Outing. 14 members and 5 guests joined us for a visit to RHS Rosemoor with a guided tour.

We met at Ruth's for car sharing and arrived at Rosemoor at about 10.45am. We assembled in the café, had some refreshment whilst waiting for our tour guide. The tour started at 11.30 and lasted one hour. It was a lovely day; warm but not too hot and most importantly, no rain. The tour was very interesting and informative, many of our members are regular visitors to Rosemoor but even they learned some interesting new facts. After the tour, most of us went to have some lunch followed by mooching around the grounds afterwards, we left after 3pm. Everyone had a great time.



**Date and venue for next meeting: Monday July 8 at 7.30pm, Lewdown Victory Hall
Beauty Evening with Kathy**

July dates for your diary:

18 - Coffee morning at Roadford Lake

22 - Monday Walk TBA

Advance notice of Afternoon Tea Event on August 13th

For more details check out the August edition of NewsLink

Monday to Friday

8.45am to 3.15pm

2-5 year olds

Led by Lisa Broadbridge

Early Years Teacher

Please phone for availability
Early Years Foundation Unit with plenty
of safe outdoor space.

We accept 2gether funding for 2 year
olds and Early Years Education Funding
for 3 year olds.

Respect

Kindness

Responsibility

FLS

Friends of Low Trenchard C of E Primary School

We have an amazing team that
fundraise to enhance our children's
learning journey. Please see our FLS
Facebook page, school website and
local adverts to support our fantastic
school.

Bingo ~ Bake sale ~ summer/winter fair ~ raffles ~
jumble sale ~ sponsored activities and much more!

Wrap around care

Available for 3-11 year olds

£2 per hour (1/2 hour bookings available)

8am to 8.40 am breakfast club £2 per session

3.15pm to 5.15pm (4.15pm Fridays) after school care including snacks.

For more information, contact the school office on
01566 783273

www.lewtrenchard.devon.sch.uk

Email lewtrenchard@andaras.org



Reflections of a Steam Fireman

After the Beeching report and wholesale destruction of the railway (especially Steam) ending on our region on the 9th July 1967.

But life has to go on, diesels were slowly introduced. 1550 Cromptons the senior driver at the loco had to go on a seven week training course, so the loco made the senior fireman step and take their steam loco test leaving the loco short of fireman and I was asked at seventeen to give up 'no nights till you're eighteen rule'.

I sign the form and the following week I rostered with my regular driver, John Carter. We prepared our engine, a Q1 class 0-6-0, and worked a ballast train to Walton-on-Thames. My first weeks pay was for 116 hours 7 nights including Sunday, once you work over 8 hours the extras mount up.



The next week we worked the Petersfield goods, a full load with Witley and Haslemere banks to negotiate with a 76 standard 2-6-0 class down to walking pace at the top of the bank, later that week we had a new Crompton diesel, my driver was trained early because he was relief running foreman.

Same load, 46 wagons of coal mostly, as the steam engine.

We top the bank at twenty mph. We both look at each other amazed at the power, on towards Petersfield, at Langley bank we did not stop and pin wagon brakes down, we went over the top at 20mph, my driver applied the brakes to keep the train in check, no response, full emergency brake, the train was now out of control, a blast on the horn to signal that we were a runaway, halfway down the bank Princess Bridge crossing he could hear us coming and managed to open gates as we swept through and he rushed into his cabin and gave the bell for runaway train, next crossing was Liss station and the signalman managed to get his gate open in time.

By this time we were frantically sounding the horn, the next crossing was Andlers Ash, it was clear, we did not get back in control till just before Sheet crossing, the gradient rises, we had been out of control for about six miles, lucky it was 6.30am. We got to Petersfield two very ashen train crew needed a cuppa.

John informed the shunter that when we worked back he must give us a fitted head of wagon with vacuum brakes, I thought these diesels are not so good, the railway then announce that diesels must have a fitted head when working loose coupled trains sadly a driver and fireman were killed at Christ Hospital near Horsham.

I must add that a steam engine had a steam brake for the loco and a combine vacuum brake for engine and tender, also in an emergency full reverse gear and apply steam.

Nine Elms suffered a shortage of fireman and I was sent on loan working empty carriage stock from Clapham to Waterloo, then bump the train out of Waterloo Station with a Standard 2-6-2 tank, interesting work for a country boy, all these posh people catching the Bournemouth Belle or Boat Train to Southampton for the Ocean Liners.

Another turn with a Standard 2-6-4 tank was the train from Clapham to Kensington Olympia in the morning and evening for postal workers, also freight trips to Willesden and Brent.

Tom



Stowford's



at Stowford Parish Hall

We are pleased to advise that the organisers and all that attended our regular quiz evenings this last winter have raised £259 for charity. The beneficiaries this year are St Lukes Hospice and Devon Air Ambulance

From the organisers, a big thank you to everyone who came along.

We look forward to seeing you again on Thursday 10th October 7.30pm



STOWFORD COMMUNITY COFFEE MORNING

Support this new venture and come and meet your neighbours for a coffee, cake and catch up!

When?

10am - 12noon on the first Tuesday of every month.

Where?

Stowford Parish Hall.

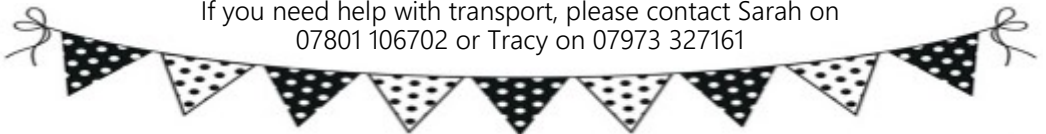
Cost?

£3 per person (cash only) which includes a hot drink and cake.

Profits will be donated to a charity chosen by SCCM.

All friends and family welcome.

If you need help with transport, please contact Sarah on 07801 106702 or Tracy on 07973 327161



Lewdown Produce Show

August 24, Lewdown Victory Hall

The show schedule will be available to pick up in Copper's Stores
from the end of June

There are plenty of classes for everyone to enter



Photography:

Black & White Photograph

Wild Weather Photograph

Work in Progress Photograph

Handicraft:

An item made with Toilet Rolls

Get Well Card

An item of Knitting, Crochet or Needle Felting

An Edible Necklace

A Collage using Things from Nature (A4 size)

Produce:

Please refer to the schedule

If anyone has any cups or trophies that have been won in past years at the Lewdown Produce Show then please return them to Sarah or Andy Nash. Thank you!

Gardening Jobs For July

It's July, summer is finally here and the garden is jam packed.

Here are my top tips to help you make the most of this great month...

Keep on picking

Courgettes are one garden favourite which reward those who pick fruit frequently, as they will keep on producing throughout the summer and offer you multiple harvests. Many beans (including french and runner) will also produce all summer long if you keep picking.

You can also make repeat picks from lettuce plants by just taking a few of the outer leaves at a time (rather than waiting to harvest an entire heart), the plants will continue producing tender fresh leaves which can provide salad leaves over an extended period.

Water wisely

Given the droughts of recent years, we are all more aware of the need to be wise with our water use, but doing so can benefit our plants (not just the reservoirs). It is far better to water your plants deeply, a couple of times week, than it is to sprinkle the surface of the soil every day. Avoid watering the leaves which can be easily burnt in bright sunlight.



Why not make a DIY olla to help provide moisture to your most precious plants? Purpose made ones can be expensive, so I use slim (unglazed) terracotta pots and fill the drainage hole with white tac, an upturned saucer makes a great lid. I bury them between the tomatoes in my polytunnel to help keep plants watered between allotment visits.

Deadhead, deadhead, deadhead

As flowers like dahlias, cosmos and sweet peas start to bloom keep picking the flowers to encourage the plants to produce more, providing colour and scent for a longer period.

You can leave the flowers on the plant until they start to die back before removing them, or follow me, and keep cutting as many flowers as you can fit in a vase for glorious displays all summer long (both indoors and out).

Happy gardening!

Liam

Non-Fiction Book of the Month for July 2024

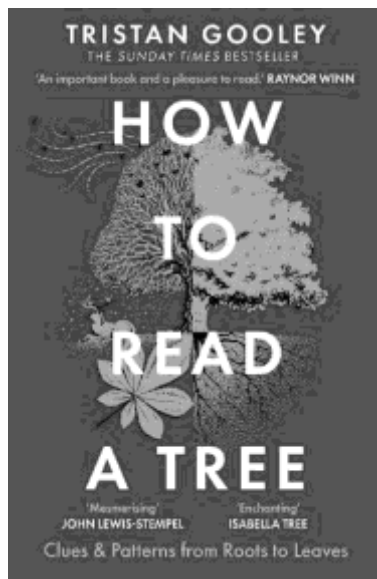
How to Read a Tree by Tristan Gooley

Do two trees ever appear identical? No, but why? Every small difference is a clue.

Each tree we meet is filled with signs that reveal secrets about the life of that tree and the landscape we stand in. The clues are easy to spot when you know what to look for, but remain invisible to most people.

As the author of the international bestsellers *The Walker's Guide* and *How to Read Water*, Tristan Gooley knows how to uncover the phenomena worth looking for. He has been instructing people in the art of reading trees for two decades and this book includes signs that will not be found in any other book in the world.

Publisher: Hodder & Stoughton
ISBN: 9781529339628



Recipe of the Month - Pasta with Broccoli-Pesto

Step 1:

500g broccoli 1tbsp rapeseed oil ½ tsp salt
300ml water

Cut broccoli into small pieces, peel the stalk and cut into small rings. Heat up the oil in a large pan. Add the broccoli for a few minutes, add salt. Add water, cover and cook for about 5 minutes. Put aside 100ml of the cooking liqueur and 150g of the broccoli, put the remaining broccoli into a blender.

Step 2:

2 pieces of garlic 60g walnuts bunch of basil
100ml rapeseed oil 40g grated parmesan ¾ tsp salt & a little black pepper

Peel, dice and roast the garlic in a frying pan with the walnuts without adding fat. Remove and cool, add to the broccoli in the blender. Add the basil leaves and the reserved cooking liqueur and blend, add the oil, cheese and mix with a spoon, season to taste.

Step 3:

350g pasta (penne) 100g Parma ham

Cook pasta according to packet, drain, back in the pan, add the broccoli-pesto & broccoli pieces, mix well, serve & garnish with Parma ham.



**Stowford
Parish Hall**



**Stowford First Aid
And
Defibrillator Training**

By Triangle Training
For Stowford Residents
At Stowford Parish Hall
Thursday 18th July 1-3PM
And
Saturday 20th July 10am-12pm

Tea and Coffee provided

For Inquiries contact Ester VanDelft
01566 783023



OLD ENGLISH FOLK TALES

ADAPTED FROM THE STORIES OF

SABINE BARING GOULD

Saturday, 6th July - 3.00pm
Lewdown Victory Hall

FREE ENTRY

Cream teas available following the
performance for a donation.

With grateful thanks to
RSYT's Sponsors:



June NewsLink Quiz Answers

BRAIN TEASER: You are in a room that has three switches and a closed door. The switches control three light bulbs on the other side of the door. Once you open the door, you may never touch the switches again. How can you definitely tell which switch is connected to each of the light bulbs?

ANSWER: Turn on the first two switches. Leave them on for five minutes. Once five minutes has passed, turn off the second switch, leaving one switch on. Now go through the door. The light that is still on is connected to the first switch. Whichever of the other two is warm to the touch is connected to the second switch. The bulb that is cold is connected to the switch that was never turned on.

CRYPTIC CROSSWORD:

1	F	I	2	S	H	3	T	A	4	I	L			5	E	6	V	O	7	K	E	8	S
	A		U		U		N								E		N				T		
9	L	O	N	G	L	I	F	E						10	A	N	K	A	R	A			
	L		D		I		E								A		C				R		
11	I	N	E	X	P	E	R	T						12	F	L	U	K	E	D			
	N		W		S		N			13	B			I		E				U			
						14	D	A	Y	R	E	T	U	R	N	S							
15	Q		16	O		17	E		L		O		Y		S					T			
18	U	N	F	A	M	I	L	I	A	R													
	A		F		M		Y		D		19	S		20	J		21	S					
22	R	U	S	S	E	T					23	P	S	Y	C	H	O	U	T				
	T		H		L							C		R		S				A			
24	E	L	O	H	I	M					25	C	O	A	U	T	H	O	R				
	R		O		N							T		F		U				V			
26	S	E	T	T	E	E					27	A	S	O	F	L	A	T	E				

RIDDLES: What starts with a T, ends with a T, and has T in it? **A teapot.**

Two fathers and two sons are in a car, yet only three people are in the car. How?
They are grandfather, father and son.

What begins with an “e” and only contains one letter? **An envelope.**

Lewdown Grouped Parish Council

**Coryton, Lewtrenchard, Marystow and Thrushelton
Councillor Vacancies**

**Would you like to become a councillor representing the parish
of Coryton or Marystow.**

Would you like to help shape the future of the area where you live.

**If so, why not come along and see what is involved in being a parish
councillor, you may then decide to join your parish council and make your
own contribution to the future.**

Contact the clerk for more details:

**Parish Clerk: Peter van Delft, Tel: 01566 783023 Email: lewdowngpc.clerk@gmail.com
www.lewdowngroupedpc.org.uk**

NewsLink Articles Required

**We are seeking articles for our magazine so if you have an
interesting hobby, pastime or favourite sport please write
about it, take a photo or two and email over to the editor for
consideration.**

Thank you ☺

Lewdown



**The Lewdown defibrillator was non-functional and has
been removed from the roadside porch of the Blue Lion, a
replacement is being sought urgently.**

Chillaton

**Located in the Village Square on the wall of No. 1 Barn
Cottages, PL16 0HS. The 999 operator will be able to give
directions for its use.**

Under 8 Colouring Competition

Holiday Draw a picture of your best holiday, colour it in, then scan and email to the editor before the 15th of July. The winner will be announced after the summer holidays. Don't forget to give us your name and age.



Good luck ☺

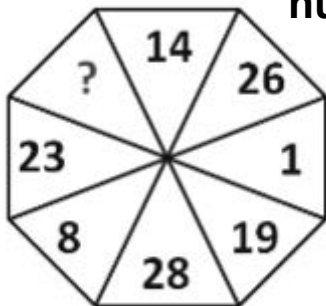
Odd Word Out

Look closely at the following words. Which one doesn't belong with the rest?

**TIN
MINIM
MILITIA
SIEVE
LINEN
AVOID**

Answer next month...

**Find the Missing
number**



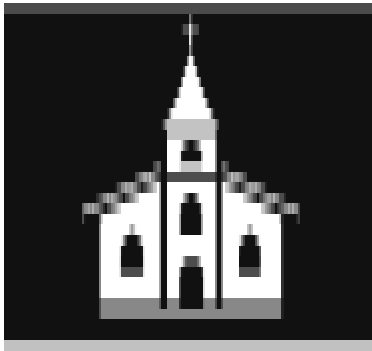
**Can you Find
the Value of X
in this Algebra
Equation?**

$$\left(\frac{2}{3}\right)^x \times \left(\frac{9}{8}\right)^x = \frac{27}{64}$$

1. A ham sandwich walks into a bar and orders a beer, bartender says "sorry, we don't serve food here."
2. Why did the Clydesdale give the pony a glass of water? Because he was a little horse.
3. Why did the scarecrow win an award? Because he was outstanding in his field.
4. Why shouldn't you write with a broken pencil? Because it's pointless.

3					4	7		5
	6				1	4		8
			8				6	
2	7						5	
1		5	2		6	8		4
	8						2	9
	3				2			
6		7	3				4	
8		2	1					7

July's Sudoku



CHURCH NEWSLETTER

Ministers

United Benefice of Lifton, Broadwood, Stowford,
Lewtrenchard with Thrushelton & Kelly with Bradstone

The Revd. Philip Conway, 01566 784462

liftontpriest@yahoo.com

The Rectory, Parsonage Court, Lifton PL16 0BJ

Milton Abbot Benefice

The Revd. Andy Atkins, 01822 870298

andya4jc@gmail.com

The Vicarage, The Parade, Milton Abbot PL19 0NZ

Churchwardens

Lifton - St Mary's

Mrs E Brownl 01566 784386

Sarah Chandler

Broadwood - St Nicholas

Mr D Perkin 01566 776758

Kelly with Bradstone - St Mary's

Mr W Kelly 01822 870393

Marystowe - St Mary the Virgin

Amy Harrowell 01822 860181

Joy McSmythurs 01822 860630

Coryton - St Andrews

Mr G. Vicat 01822 820254

Mrs J Whitfield 07989 666427

Stowford - St John the Baptist

Mr C Chick 01566 783223

Lewtrenchard - St Peters

Mrs A Westlake 01566 783909

Mrs R. Dawe 01566 783127

Thrushelton - St George

Mr A J Nash 01566 783274

Mr T Nash 01566 783320

From the Parish Priest

Dear friends,

I am getting to the age where there is a real danger that I view everything through an illogical pair of rose-tinted spectacles! Perhaps I should be diagnosed with a case of chronic Nostalgia!



It is so easy to look back at times that seem to be better in hindsight and pine for the familiar rather than accept the challenge of new things and new ways. All of us must hold in balance the things that are part of our past and upbringing with those things that are part of the present. The result of this may sometimes be excitement, and others disappointment.

I do not want to harp on, but one thing that I do feel is not the same, to the detriment of society is the lack of respect and civility within our political and civic leadership. However much the political leaders of my youth passionately held their opinions, they, on the whole, respected the good motives behind those with whom they disagreed.

Thirty Years ago, the whole nation was saddened and shocked by the death of the then Labour Leader: John Smith. The respect in which he was held by the then prime minister was evident in the gracious tribute John Major gave from the dispatch box. He said at one point "John was, by necessity, my opponent, but was never my enemy!"

I feel that there is so much encouragement in our national life to separate us from, and deny the value, of those with whom we disagree, rather than come together to, respectfully and civilly, work together for the good of our society.

I hope and pray that all our election candidates and those who aspire to political office will demonstrate this in their behaviour and language over the election campaign and also in the aftermath when some will be elevated to power and others disappointed.

"God created Man in his own image. Male and Female he created them." We must be so careful not to deny someone's worth and value to society based on their political opinions, skin colour, religion or any other human division.

May we work at being role models for our leaders, as much as we hope our leaders will be role models for us.

With love and prayers,

Philip

Service times for July 2024

Any updates will be posted on the Mission Community Website north-tamar-churches.org.

7th July The Sixth Sunday after Trinity

8am Eucharist at Stowford
9.30am Parish Eucharist at Lifton
11.15am Parish Eucharist at Kelly

14th July The Seventh Sunday after Trinity

9.30am Parish Eucharist at Broadwoodwidge
Morning Prayer at Thrushelton
11.15am Parish Eucharist at Lewtrenchard
4pm Evensong at Lifton

21st July The Eighth Sunday after Trinity

9.30am Parish Eucharist at Lifton
11.15am Parish Eucharist at Stowford
Morning Prayer at Kelly

28th July The Ninth Sunday after Trinity

9.30am Parish Eucharist at Thrushelton
Morning Prayer at Lifton
Morning Prayer at Broadwoodwidge
11.15am Parish Eucharist at Lewtrenchard

Wednesday Morning Eucharist: 10.30 at Lifton

There will be some occasions when the Wednesday Morning Service will be a service of Morning Prayer.

Bridestowe Methodist Church

Preachers for July 2024

7th	At Fairplace Okehampton	10:30
14th	K Timms	11:00
21th	US at C of E	09:30
28th	At Boasley	11:00

St. Mary the Virgin, Marystowe

Please see the church website www.southtamar.church
for details about services.

Services are also available online from 6pm on Sundays.

Quakers

Meeting for Worship:

Tavistock

Every Sunday 10.00am.

4 Canal Road

Tavistock

Contact: Kay Nicholson

01822 614596

Okehampton

Second Sunday 10.30am.

Fourth Sunday 10.30am

Second Sunday Children's Meeting

Ockment Centre

North Street

Okehampton

Contact: 01837 55805

Roman Catholic Services

Tavistock

Sunday 9.15am

Holy Days 10am

Fr. Greatbatch 01822 612645

(P. Sparling 01822 860355)

Okehampton

Saturday 6pm

Sunday 11am

Chagford - Sunday 9.00am

Fr. A. K. Gundabathina 01837 52229

anil.gundabatina@pcrdtr.org.uk

Launceston

Sunday 10.30am

Holy Days 7.30pm

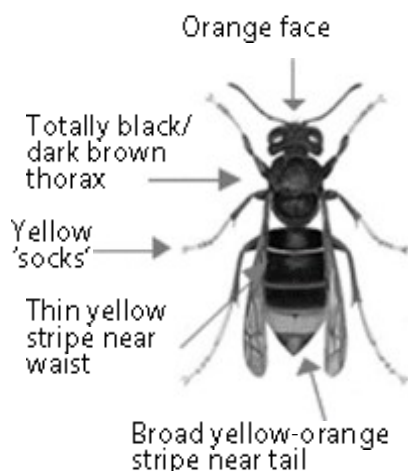
Canon John Deeny 01566 773166

Be Alert for Asian hornets!

Asian or yellow-legged hornets (scientific name *Vespa velutina*) were accidentally introduced into France in around 2004. Now they have spread through much of Western Europe. They are serious predators of honey bees, and also attack bumblebees, solitary bees and other insects.

They defend their nests aggressively and will attack anyone who gets too close: **never approach a nest**. Since 2016, there have been sightings of the Asian hornet in the UK, and a few nests have been found.

Asian hornet



Asian hornets are generally smaller (25-30 mm head to tail) than our native hornet, the European hornet

(*Vespa crabro*), which is 30-35 mm head to tail (but can seem much bigger!).

They are easy to distinguish because Asian hornets are mostly dark brown/black, with yellow 'socks' and an orange-yellow band near the tail. Native hornets look like very large wasps, with brown legs and bright yellow and black/brown markings. Native hornets fly both night and day, while Asian hornets fly only during the day.

**If you see this insect
PLEASE REPORT IT!**



Asian hornet
REPORT



Native hornet
do not report

The best way to report the Asian hornet is by using the app: **'Asian Hornet Watch'**, or you can send photos and location details to: alertnonnative@ceh.ac.uk

For identification help and advice in your area, go to www.bbka.org.uk (British Beekeepers Association), hover over Asian Hornet and choose Asian Hornet Action Team map from the dropdown menu. Click on a pin on the map for local contact details.

The Organisers of Leawoodstock are pleased to announce that on the 28th of September 2024 we will once again be running this unique music event in Bridestowe.

Run by a group of friends, the original idea of a Band in a Barn was born from a throw away remark about how to repurpose a clean farm building after the cattle had been turned out for the summer. The initial event in 2017 was a one off to raise money and awareness of the local Cancer Charities 'Force' of Exeter and 'Pooch' in Plymouth.



We had all had personal experience of the devastation that Cancer can bring and wanted to give something back to these two small organisations. We realised that with our combined backgrounds in Engineering, Health and Safety, Hospitality, Project Management and having possession of a big barn and with an 'in house' electrician we were perfectly placed to organise a Not-for-Profit Music Event to which we could sell tickets. Leawoodstock was born!

Following a very successful evening we were inundated by requests to run again. We decided that to run every year would be too demanding - but we would organise a second event in 2019. This we did - and having learned many lessons from 2017 we streamlined the whole process and chose to support Devon Blood Bikes (Freewheelers) and The Devon Air Ambulance as being very relevant to our daily lives as walkers, riders, cyclists, motorcyclists, and farmers.

With Covid behind us we return with renewed enthusiasm. The line up for 2024 has yet to be finalised, but we are in discussion with two brilliant local Bands and should be able to go public very soon. We offer ample parking and camping to those who wish to stay overnight. Food will be available and here we are delighted to support the Okehampton Lions who will bring their outside catering unit for burgers, bacon baps, chips etc. Pasties will also be available from behind the ultra-long Feed Barrier Bar which also will sell a wide range of alcohol and soft drinks at very competitive prices.

This year our chosen charities are the Dartmoor Rescue Group and RABI - the Royal Agricultural Benevolent Institution - which provides mental health, wellbeing and financial support to farming families.

Please watch this space as we shall shortly be announcing our line up, ticket sales, price and admission details. This event is fully insured, licensed and will be stewarded at all times. Find us on Facebook @ Leawoodstock.

A Hard Life

A short story by Ron Brewer of the Attleborough Writers' Group

My life has been pretty hard in the past but things have sorted themselves out and now I am living in relative comfort.

Hopefully things will stay this way for a long time so I'd better make the best of it. Family life meant that I didn't get the best of starts in this world. My father had disappeared off by the time I was born. Seemed he was looking for another woman, well that's what we were told. With two brothers and two sisters at home as well, mum was always on the scrounge for more food. She did her best but just trying to get enough nourishment to even put on weight was difficult.



Even worse, we lost our home because of some local development, were separated from each other and it was a matter of the survival of the fittest. I was wandering around, having to just use my wits to get by. No one seemed to have any sympathy for those who were down on their luck. I soon found it was easier to hide away during most of the daylight hours, perhaps spending the time sleeping and then to travel around at dusk. I'd pick up odd bits of food that I might come across, even to the point of eating stuff that had been left around for pets and farm animals.

But as time went on I got weaker and weaker, even walking around was getting too difficult. One day I found my normal route had been blocked off and I had to cross a busy road that I was not familiar with. I went as fast as I could but I was injured by a passing car as I couldn't get out of the way quick enough. The car driver came back to have a look and kindly put a blanket around me, carefully positioned me in her car and took me straight off to hospital.

The staff at the hospital were wonderful. They must have dealt with many similar cases before as I was cleaned up, given some nutritious food, something to drink and settled down in a comfortable bed. I think I fell asleep almost immediately and woke up later feeling much, much better.

I was determined to try to turn my life around, to grasp this opportunity to live in a more normal world. My past life had been hard and I was determined not to go all through that again. So I was a 'perfect patient', co-operating with the staff, putting up with the regular baths and the weighing routines. The great day came and I was discharged, taken away from the hospital and given my freedom in what seemed like a countryside heaven.

I've settled down now, even found a girlfriend. And I'll always be grateful to those people at the Hedgehog Rescue Centre who made my past life into a thing of the past.



Blue Lion Inn, Lewdown

Charlie, Nicky, Charlotte, Georgia, Jonty & Alfie

Welcome you to our Family Friendly Pub

01566 783238



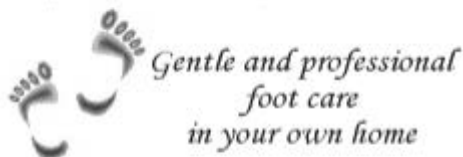
*Public House offering good food, real ales,
live music, pool, skittles, darts and BT Sports*

*For upcoming live music & quizzes etc. follow us on Facebook
Search for 'blue lion inn'*



Mobile Foot Care

Sally Isaac S.A.C. Dip. FHPT/FHPP



*Gentle and professional
foot care
in your own home*

If you suffer discomfort from

- corns
- cracked heels
- callus
- ingrown toenails
- thickened/tough nails

*or just have difficulty cutting
your toenails then
please ring me*

I'll come to you!

Telephone Sally
07961 076 168

WELCOME TO
LOBHILL FARMHOUSE
BED AND BREAKFAST
and HOLIDAY COTTAGE



Lobhill Farmhouse, Lewdown
EX20 4DT

Tel: 01566 783542
07817 244687

Jane Colwill

www.lobhillbedandbreakfast.co.uk



07734 956925

8- Seater Vehicle Available

Anytime - Anyplace - Anywhere

AIRPORT • TRAIN STATION
SHOPPING • DOCTOR

Prompt Reliable Honest
FAMILY RUN COMPANY
24/7 365 days

TAMAR COSMETICS DOCTOR

Medical Aesthetics Clinic
Dr Sarah Michaels
MBBS, BA (Hons), MRCGP

Discreet Clinic in Lifford
Close to Launceston
Free Parking

sarah@tamarcosmeticsdoctor.co.uk
07830888557
www.tamarcosmeticsdoctor.co.uk
Find me on Facebook, WhatsApp and Instagram

LOGS



SEASONED
HARD WOOD,
SPLIT TO YOUR
REQUIREMENTS.

DELIVERED
LOCALLY

07942 073204

the2relics@gmail.com

PLUMBER

EST 40 Years

**Lewdown
& District**

Tel: 01566 783562

Mobile: 07731878510

Tim Dixon

**Domestic Plumbing &
Bathroom Fitting**

01566 784028

07903535881

careful & reliable service

timdixonplumbing.co.uk

Megan's Home Cleaning!

**10+ years in the
Business**

**Earth Friendly
Cleaning solutions
Weekly & bi-weekly
Slots available**

Tel: 07955 805 271

MARK CHIVERS - SOLE TRADER

Highly skilled carpenter with over 40 years
experience, including but not limited to:

INTERIOR

**KITCHEN • BATHROOMS • BEDROOMS
FLOORING • DOORS • WALLS**

EXTERIOR

**FASCIA & SOFFIT • GUTTERING & DOWNPIPE
WINDOWS (including sash repairs) • FENCING**

FREE ESTIMATES - UNDER NO OBLIGATION

The best price and best service for your budget
Please Do Not Hesitate To Contact Me With Any Enquiries:



CARPENTRY & JOINERY

**Mobile: 07804 104812
(8am-7pm)**

**Home: 01566 783743
(9am-5pm)**

**Email any time:
m.c.carpentry@outlook.com**



☎ 07836 760060

✉ BrowningsCarpentry@gmail.com

**All Aspects of Bespoke
Carpentry & Joinery**

📘 Browning's Carpentry & Joinery

Chair Yoga for Seniors

with Yogajeanie

Chair yoga helps with
Muscle toning
Reduced stress levels
better breathing habits
better sleep
overall sense of well-being
It's fun too!

Interested?
Just come along in comfy clothing

At Lewdown Village Hall
Thursday's
from 10:00 am -11:00 am
£7 per class

For more information contact
jeanharris50@hotmail.com
Mobile 07929 278788



R Mears & Sons

Chimney Sweeps & Stove Installation

Established over 30 years

Vac Brush. Full CCTV investigations.

Pots, Cowlings & Bird Protection fitted. Chimneys Lined.

Solid Fuel Appliances, Rayburns, Woodburners,

Stoves, etc serviced. Fully Insured.

Tel: 01840 261221 Tavistock: 01822 664554

Mob: 07737 533392

www.sweepdevon.com





Ella Payne Gardens Design & Maintenance

RHS Qualified

07968 170130



QUALITY OIL FIRED APPLIANCE
MAINTENANCE AT
COMPETITIVE PRICES

CALL MARK

☎ 0781 4976 076 OR 01566 784298

MARKSTONE GRANITE

We don't just sell granite.....

- * Slate: Flooring, Worktops, Sills, Hearths, Tables & Benches.
- * Oak Beams, Sleepers, Barrels & Boards (perfect for shelves)
- * Natural Stone Paving & Cobbles.
 - * Porcelain Paving & Flooring.
 - * Reclaimed Bricks
- * Granite Quoins, Cobbles, Lintels, Steps, Plinths, Posts & Troughs



Tel. 01566 784289 Lifton Devon.
www.markstonegranite.co.uk



TAVISTOCK STOVES

& FIREPLACES

Woodburning, Multifuel,
Electric & Gas Stoves.



In our Showroom:

- Live working displays
- Maintenance products – rope, bricks, glass, cement, paint etc
- Fireplace accessories



Our Services Include:

- Free site survey.
- Full installation service.
- Repair & maintenance.



4 Vigo Bridge Road, Tavistock. PL19 0EY
Tel. 01822 487700 sales@tavistoves.co.uk
www.tavistoves.co.uk

COLOUR PRINTING & COPYING

This service is available for a minimum of 10 copies at a charge of 5p per single copy or 7p per double sided copy.

FOR SALE COPIER PAPER

£4.75 per ream

The Community NewsLink purchases its paper in bulk and as such is able to access competitively priced materials. We can currently offer our readers copier paper for the special price of £4.75 per ream, a vast saving on High Street prices. We recommend you phone to check availability and arrange a convenient time to collect.

Please Contact: **Terry Southcott, Fairview Bungalow, Lewdown**
Phone 01566 783079. or M 07831309666

All proceeds will go to The Lewdown Residents Association
who produce The Community NewsLink.

Milton Abbot Grouped Parish Council

Please see our website for lots of information
about Milton Abbot, Chillaton, Bradstone, Dunterton and the surrounding
areas, along with a list of the local Parish Councillors

www.magpc.co.uk



For bookings and enquiries contact Julie Chick Tel: 01566 783223

Email: stowfordparishhall@gmail.com

A Defibrillator is located in the porch - Postcode EX20 4BZ

Charity No: 1020031

GRAHAM TOWNSEND GROUNDWORKS

WATER DRAINAGE & GROUNDWORK SPECIALISTS

WATER LEAKS & RENEWALS

SEPTIC TANKS INSTALLED

**DRAINS CLEARED
TREATMENT PLANT
ALL FENCING WORK
DEMOLITION**

**GROUNDWORKS
DRAINS REPLACED
MOLING (No Dig)
PATIOS DRIVES**

FREE ESTIMATES

TEL: 01837 657687 / 01566 783788

MOBILE: 07866 465093

email: info@gtownsendgroundworks.com

Roger's

**Painting & Decorating
Services**

**Interior & Exterior Work
Traditional & Modern Techniques**

**City & Guilds Qualified
30 years Experience**



Mobile: 07783 819171

Septic Tanks

Emptied

Phone: 01805 601203

Mobile: 07831 241531

**Leave a message, we will re-
turn your call, or email:**

hearnhaulageltd@outlook.com

**Small Lorry
Available**

Card payment accepted

Hearn Haulage Ltd

TORQUAY TAXIS Ltd

**AIR AND SEA PORT
TRANSFERS**

luxury comfortable transport

Door to door service

All air and sea ports covered

Reliable service

Competitive prices

18 years established

Call Jared Spencer

07830360341

01566 451442

**ROGER
WONNACOTT**
GROUND & GARDEN MAINTENANCE

- ▲ GENERAL GARDEN MAINTENANCE
- ▲ SERVICES RENEWED & REPLACED
- ▲ LEAK REPAIRS & TROUBLESHOOTING
- ▲ MOLE / GRUNDOMAT WORK UNDERTAKEN
- ▲ MOLE & COMPRESSOR AVAILABLE



- ▲ COMPLETE JOB PRICING OR HOURLY RATES
- ▲ FULLY INSURED & BASED NEAR LAUNCESTON

07919 912776

▼ rwonnacott@hotmail.com



supplier of
HARDWOOD LOGS
cut and split to your
requirements

Tel. Colin Bennett:

01822 487259

Mobile:

07523172369

**Lewdown
Victory Hall**

Bookings contact

Roy Stacey

on 01566 783267



Broadbury Landcare

All aspects of Garden Maintenance
and Landscaping

Fully Qualified Fully Insured Free Estimates

10 Years Experience

Andrew Barton 07532 216216

Raw Meat Animal Feed For Dogs & Cats

Convenient blocks *Frozen to preserve*

Natural, just meat or meat and bone

No Preservatives, No Artificial Colouring's
(both can be harmful to your animal)

Raw Rations Plus



For information or to order

website: **www.rawrationsplus.co.uk**
Phone: **07831309666** or **01566783079**
Email: **sales@rawrationsplus.co.uk**
Post: Fairview Bungalow, Lewdown,
Okehampton, Devon EX20 4DL



A C WORTH BUILDERS



GENERAL BUILDERS, DECORATORS,
PLUMBING & HEATING,
PURPOSE MADE JOINERY etc.

Kirtonia, Vale Down, Lydford DEVON EX20 4BB

Email: acworthbuilders@aol.com



Tel: 01566 783282
Keith: 07778 471648
Andy: 07867 524515



e:info@redsquirreltreecare.co.uk



All Proceeds to the Gurkha Welfare Trust



to see what we can do for you



CPC TRAVEL AGENCY

Your Friendly Local Independent Travel Agent

**Making Your Dream Holiday's
Become Reality since 2017**

01837748055 - enquiries@cpc.travel
www.cpc.travel
16 Red Lion Yard, Okehampton

Part of





Enjoy the Winners Circle
For that champion veg
Collect your own FREE
Proper Well Rotted Horse manure

lydvalefellponies@gmail.com

Free Bags Available!
Trailers welcome!



Bratton Clovelly



Torben, Suzy, Alex & Thomas
look forward to seeing you
01837 871447

Have you got too many apples?

We can crush them, press, bottle
& sterilise for Juice

Contact - George Bellamy
Woolacott Farm, Lewdown
01566 783266

TOP QUALITY TOP SOIL FOR SALE

SEA SAND **ROAD PLANINGS**

VARIOUS DECORATIVE GRAVEL CHIPPINGS & BUILDING AGGREGATES

No VAT

01566 784645 OR 07771 823414

A.J.NASH BUILDERS LTD

dy Nash

General Builder and Decorator



07769728425

01566783274

sarahnash@btinternet.com



We're bigger than you think

Lifton

Tinhay Mill Industrial Estate, Tinhay, Lifton, Devon PL16 0AH

Telephone: **01566 784385**

Email: lifton@tinhaybuildingsupplies.co.uk

Launceston

Newport Industrial Estate, Launceston, Cornwall PL15 8EX

Telephone: **01566 771989**

Email: launceston@tinhaybuildingsupplies.co.uk

Tavistock

Pixton Lane, Tavistock, Devon PL19 8DH

Telephone: **01822 619509**

Email: tavistock@tinhaybuildingsupplies.co.uk

FREE LOCAL DELIVERY



www.tinhaybuildingsupplies.co.uk

S H Joinery

Granite and Quartz worktop cutting and fitting

Cut roofs

Traditional A frames

Kitchen fitting

External bi fold doors

Joinery



Steve Hunt

01566 783228

07974 799062

shjoinery@hotmail.com



Caroline Harris MIAB

Owner & Bookkeeper

Tel: 01566 783 502

Mob: 07866 953 708

cmhbookkeeping@btinternet.com

www.cmhbookkeeping.co.uk

- + Bookkeeping
- + Self Assessments
- + Accounts Preparation
- + VAT Returns

Soupa Troopers

All welcome to this community event



Wednesday July 10th

From 12.30pm in Lewdown Victory Hall

Soup and a Bread Roll, Tea or Coffee - £4

Followed by conversation & games





Upholstery Service



**A New Life for your
Favourite Furniture**

Collection & Delivery Available

Call: Linda 07484 093494 or **Email:** sales@fabricandfurniture.co.uk

 [@fabricandfurniture](https://www.instagram.com/fabricandfurniture)  [fabricandfurniture](https://www.facebook.com/fabricandfurniture)

www.fabricandfurniture.co.uk

