

THE AREA MAGAZINE FOR LEWDOWN, CHILLATON, CORYTON,  
STOWFORD, MARYSTOWE, THRUSHELTON, LEWTRENCHARD

July 2019

The magazine for all that's going on in your area

# Community



# Newslink

PUBLISHED BY THE LEWDOWN RESIDENTS ASSOCIATION,  
REG. CHARITY NO. 1071808

FUNDED BY THE ADVERTISERS, SPONSORS, MEMBERSHIPS AND AREA CHURCHES  
ALSO SUPPORTED BY GRANTS FROM DEVON COMMUNITY FOUNDATION AND  
LLOYDS TSB FOUNDATION FOR ENGLAND & WALES

***Stowford Show*** is once again not far off...  
Sat 10th August

Time to dust off your sewing accessories and baking utensils. Classes to include a hand quilted item or a piece of knitting or crochet for those good at handicraft or for the cooks among us a cake containing fruit or sausage rolls plus many more classes.

# LEWDOWN VICTORY HALL

# SNOWBALL

# WHIST DRIVE

**Saturday 13<sup>th</sup> July at 8.00pm**

Held on the second Saturday each month

Contact Colin 01566 783279



## **Lewdown**

**Located in the roadside porch of the Blue Lion (EX20 4DL)**

Please note it is not recognised by 999 calls if more than 200 meters away from it.

When ringing 999 they will access code to open box.

## **Chillaton**

**Located in the Village Square on the wall of No. 1 Barn Cottages (PL16 0HS)** we do not have any further details for this unit. The 999 operator will be able to give directions for its use.

# The Community Newslink

A MONTHLY MAGAZINE PROVIDING NEWS, INFORMATION AND ITEMS OF INTEREST FOR THE AREAS OF LEWDOWN, CHILLATON, CORYTON, STOWFORD AND MARYSTOWWE, THRUSHELTON, LEWTRENCHARD

Established January 1999

Issue No. 228 July 2019

**Editor**

**Andrew McCarthy**

**3 Reddicliffe Mews, Lewdown, Devon. EX20 4BQ**

**Telephone 01566 783093 E-Mail mccarthy.andy@gmail.com**

**Production, Distribution and Delivery Helpers.**

Mrs C. Bickell, Mrs Martin, Mr. T. Nash, Mrs R. Squires,  
Mrs A. Westlake, Mrs M. Rolfe, Terry Southcott,  
Coppers Stores, Keith Turner and Ryan and Jessica Kingdom

**All news, photographs, reports, events etc. for the Newslink need to be handed in to the Editor by 15th of the preceding month.**

We welcome your articles / items / advertisements. Though we do our best, we cannot guarantee to publish all that is sent to us, as some things will not reproduce in a good enough quality.

DONATIONS TOWARD THE COST OF PUBLISHING THIS MAGAZINE CAN BE GIVEN TO ANY COMMITTEE MEMBER OR CONTACT:

LRA CHAIRMAN: TIM NASH (TIMNASH682@BTINTERNET.COM)

LRA TREASURER: SARAH NASH (SARAHNASH@BTINTERNET.COM)

YOUR SUPPORT WOULD BE VERY MUCH APPRECIATED



**Could you help with delivering the Newslink?**

We always welcome new volunteers to join our excellent team of helpers that deliver the Newslink every month. If you're interested please to contact us (details on page 3)

**Don't forget that you can always get copies of the Link in the Village Shops and in the local Churches, or register with us to be sent the PDF version (send an email to us at Lewdownra@gmail.com)**



Cover Picture - Photo by mharward1 from FreeImages "<https://freeimages.com/>"



# Lew Trenchard Primary School



Monday to Friday 9.15am to 3.30pm  
2-5 year olds

Please phone for availability.

Early Years Foundation Unit with plenty of safe outdoor space.  
We accept 2gether funding for 2 year olds and Early Years Education  
funding for 3 year olds.

## Baby / Toddler Session

Monday mornings 9.15am to 11.15am

Justine welcomes you to come and join her in the school hall for lots  
of fun activities (some messy) and plenty of singing. A great  
opportunity to meet other parents / carers.

£2.00 per session – please bring your own snack.

For more information contact the school office on 01566 783273.

[www.lewtrenchardschool.org.uk](http://www.lewtrenchardschool.org.uk) Email [lewtrenchardadmin@andaras](mailto:lewtrenchardadmin@andaras)

## COLOUR PRINTING & COPYING

This service is available for a minimum of 10 copies at a  
charge of 5p per single copy or 7p per double sided copy.

## FOR SALE COPIER PAPER

**£3.50 per ream**

The Community Newlink purchases its paper in bulk and as such is able to  
access competitively priced materials. We can currently offer our readers  
copier paper for the special price of £3.50 per ream, a vast saving on High  
Street prices. We recommend you phone to check availability and arrange  
a convenient time to collect.

Please Contact: **Terry Southcott, Fairview Bungalow, Lewdown**  
**Phone 01566 783079.**

All proceeds will go to The Lewdown Residents Association  
and The Community Newlink.

## ***Dear readers***

*Well it's nearly upon us again, what I hear you cry!, could it be that by the time you read this tosh, the longest day will have come and gone so it's all down hill to Christmas, no, but that reminds me to tell you that if you want your sprouts just perfect for the festive period now is the best time to start then boiling, or is it to plant them, I get so easily confused. Anyway I digress, what I meant to say is that in less than two months the produce shows will be at Stowford or Lewdown. How are your potatoes and carrots, are your sweet peas looking wonderful, if so they have peaked a bit early, there are schedules around the village go on give it ago, it's more fun than you think.*

*Good news everyone, I have just bought a pen that can write underwater, Thankfully it can write many other words as well.*

*Nick and myself, yes that's what the present Mrs Nash is called, have been spending far to much time at present in the cinema at Okehampton, and it has nothing to do with the fact that for the health and well being of the young in our society I should be kept in a darkened room out of sight from those with a more sensitive nature. We have seen Rocketman, the Elton John thing, and the new Aladdin Walt Disney picture which we all enjoyed very much., plus and this will amaze you greatly, we went and seem Take that in the pictures where it was streamed alive on to the big screen. Yes I know we went to London and saw them, but in the O2 we were a good 100 yards from the stage," for the young among you that's 91 metres give or take", and it also gave Nick the opportunity to have a good sing song again without giving to much offence to anyone near us.*

*Will close now as the finger I type with is starting to ache.*

*Best wishes from Me.*

*A friend of mind recently had to undergo some minor surgery. Before the surgery the anaesthetist offered to knock me out with either gas or a boat paddle.*

*It was an ether/ oar situation.*

### **Wanted to purchase**

**Medals - Watches - Coins**

**Expert advice given on Auctions/Probate/Insurance etc.**



**Contact Roger Knowles**

**Telephone 07763 792195 (Evenings)**

## **Lewtrenchard WI April & May 2019**

In April Cathie welcomed everyone to the monthly meeting and we all joined in singing Jerusalem. The monthly business was discussed and then Cathie introduced our member Sharon O'Brien, who was talking to us about Mindfulness.

Sharon explained that mindfulness is about finding time for ourselves in this hectic world, where we have many roles such as jobs, volunteering, caring duties, looking after families. Doing this will actually make your body healthier. After an extensive and extremely stressful time at work she finally was taken to see her doctor, who immediately signed her off of work. She saw it as an 'everything happened for a reason moment' and after regaining her strength she achieved accreditation in courses in hypnotherapy, life healing and neuro linguistic programming. She now teaches others how to use these tools to plan their future and live with confidence.

Sharon then took us through a meditation, relaxation exercise where we could go to a calm, pleasant place away from the stress. When we finished it felt like we'd been doing it for 5 minutes but it was actually 15. Barbara gave the vote of thanks saying that it had been excellent to take time out and focus on ourselves and that we could all take away the technique she had shared and make time for ourselves in our busy lives. In May Cathie welcomed everyone to the monthly meeting which started with the usual enthusiastic singing of Jerusalem. The monthly business was briefly discussed prior to the AGM. We didn't have a speaker this month as we followed on from the usual meeting to the AGM.

We covered the main points of business including reading the minutes of the previous year's AGM, the treasurer's report, the secretary's report, a discussion around the appointment of independent financial examiner, the president's address and the election of committee and the officers.

Cathie's address reflected on the excellent year we had with interesting speakers. She thanked the ongoing members for continuing to attend the meetings and join in the activities. She was also pleased to welcome the new members, who had joined this year. She expressed her thanks to the people behind the scenes who organised the ongoing tasks and the Committee and Officers for supporting her in making sure everything runs smoothly. The members in turn thanked Cathie for her hard work as President.

Elections were held and saw Cathie Slocombe as President, Monique Hedger as Treasurer and Barbara Scott as Secretary. Cathie also announced the new vice president, Margaret Dunn.

Cathie advised that a member from Taw & Tavy WI would be the Link delegate for the upcoming NFWI Annual Meeting this year in Bournemouth. This year's proposed resolutions were presented in January and at this meeting the Lewtrenchard members voted unanimously in favour of both the two resolutions, Don't Fear the Smear and Rural Buses, which have been chosen to be debated and voted on at the 2019 National AGM.

The meeting closed at 9.10pm and members enjoyed a lovely cup of tea and biscuit. Next Meeting is 10th June, summer outing 2.30pm. Contact committee members for details.

July 8<sup>th</sup> meeting, speaker Kay Rouse about the Mercy Ships and competition is an interesting object starting with 'W'. All welcome.

# FUN QUIZ NIGHT

Raising Funds for the  
**'British Heart Foundation'**



The  
Victory Hall  
Lewdown



British Heart  
Foundation

Saturday 6<sup>th</sup> July 2019 at 7.30pm

Teams of up to 6 people

£5 per head to include snacks

Wine, beer and soft drinks to purchase

Raffle

To book a team, call Claire Knight

On 01566 783407



LIFTON  
COTTAGE GARDEN  
SOCIETY and WI

## THIRTY-EIGHTH ANNUAL VILLAGE SHOW

To Be Held in  
**THE COMMUNITY CENTRE,  
LIFTON.**

on

**Saturday 3rd August, 2019**

Doors open at 2.30pm

Presentation of Cups at 4.00pm

Schedules available NOW:  
from Lifton Supply Stores  
or S. T. Lane, Tinhay

Last date for entries: Tuesday July 30th

## Bulk Buy Fuel Loans

We know living without mains gas can be expensive. If you rely on oil, Calor gas, LPG, wood or coal to heat your home, we may be able to help you to spread the cost of your bulk buy over six months\*

**Find out more: call 01823 461099,  
or email enquiries@wrcic.org.uk**

Your local, not-for-profit lender funded by  
West Devon Borough Council

### **Wessex Resolutions CIC**

Heatherton Park Studios, Bradford on Tone,  
Taunton, TA4 1EU

[www.wessexresolutions.org.uk](http://www.wessexresolutions.org.uk)

**\* Subject to Status**

**Representative 0% APR**



LIFTON AUTOMOTIVE SERVICES

**Under new ownership !**

AARON DOUCE T/A

LIFTON AUTOMOTIVE SERVICES

FOR ALL YOUR MOTORING NEEDS!  
MOT'S, SERVICING, DIAGNOSTICS / PLUG IN  
TYRES, CAMBELT'S ,BATTERIES AND  
4WHEEL ALIGNMENT, AIR CONDITIONING  
AND MUCH MORE!

CALL US TODAY ON  
- 01566 784076

UNIT 1  
TINHAY INDUSTRIAL ESTATE  
LIFTON DEVON  
PL16 0AH

[aarondouce@yahoo.com](mailto:aarondouce@yahoo.com)

# The Blue Lion, Lewdown

Charlie, Nicky, Charlotte, Georgia, Jonty & Alfie  
Welcome you to our Family Friendly Pub



Evening meals are now being served evenings  
Tuesday to Saturday

**Wednesday Night—Steak Special!!**  
**2 x 10oz steaks for £22**

Also available - B&B!!



Pool - Darts - Skittles - Sky Sports

01566 783238

For upcoming live music & quizzes etc follow us on Facebook  
Search for 'blue lion inn'

# MARKSTONE GRANITE

For all your Renovation, Conversion and Landscaping needs!



**Slate:** Flooring, Sills & Hearths. **Reclaimed Bricks**

**Granite:** Building Materials & Garden Features.

**Oak:** Beams, Natural Curved Lintels, **Oak Barrels.**

**Natural Stone Paving, Sleepers,** and lots more!

*In our showroom: Local Pottery & Paintings. Rustic Oak Fire surrounds, Coffee Tables, Benches & chopping boards handcrafted in our workshop.*

**Tel. 01566 784289**

**www.markstonegranite.co.uk**





Granite and Quartz worktop cutting • Doors • Staircases •  
Kitchens • Cut roofs • Windows • Sash Windows •  
External bi-fold doors •

Machining service available.

Bespoke joinery for completely unique pieces.

**Steve Hunt**

**01566 783228**

**07974799062**



**Caroline Harris**  
Bookkeeping Services



**Caroline Harris** MIA B

*Owner & Bookkeeper*

**Tel:** 01566 783 502

**Mob:** 07866 953 708

[cmhbookkeeping@btinternet.com](mailto:cmhbookkeeping@btinternet.com)

[www.cmhbookkeeping.co.uk](http://www.cmhbookkeeping.co.uk)

+ Bookkeeping

+ Self Assessments

+ Accounts Preparation

+ VAT Returns

**JAPANESE KNOTWEED** *Fallopia japonica* strikes fear into the hearts of gardeners, homeowners, developers and ecologists alike, but what is all the fuss about? Should we believe the newspaper headlines or the other sensational stories of zero valuations, property damage and that it is impossible to kill?

There is a clue in the name as to where the specie originated, but it was first introduced into Europe via the Netherlands in 1849, imported by naturalist Philip Von Seibold who promoted and sold it to the public as a garden ornamental plant after it was awarded a prestigious Gold Medal by the “Society of Agriculture and Horticulture” 1847. However, he was not entirely responsible as it became widely available in nurseries across Europe during that time; encouraged to be used in all gardens as a fast-growing plant, often used for stabilising railway embankments and even used as a screening plant for the privy house in the garden! The first instance of the plant recorded in the wild (in the UK) was in South Wales in the 1880’s. Soon after, records show that gardeners reported issues with controlling the plant and in 1905 the Journal of the Royal Horticultural Society urged readers not to plant the specie unless it was “most carefully kept in check”, however, no guidance was given how to do this!

By this time, it was probably too late, and the plant version of Dennis the Menace was found far and wide in the British countryside. It can grow from a rhizome fragment as small as a fingernail and is often spread unwittingly in soil. This method of transfer is recognised now as one of the major issues, but in the early days it also led to an unlikely occurrence: all the *Fallopia japonica* in the UK is female. Given that propagating the plant for sale (Mr Von Seibold again) was relatively easy, the imported plants probably all came from the original stock and as such the Japanese knotweed found in Penzance is the same genetic make up as the plant found in the Orkneys; from East to West, North to South the plant is one female clone. As a consequence of this it is unable to produce any viable seeds and cannot spread in this way – a fairly significant benefit!

In 1981 the Wildlife and Countryside Act made it an offence to “cause the plant to grow in the wild” when it was listed with a number of other species including Giant Hogweed *Heracleum mantegazzianum*, a specie with toxic sap which can cause nasty blisters. Further controls were introduced in the Environmental Protection Act 1990 when it became listed as a ‘controlled waste’ making it an offence to dispose of the plant or any soil which may contain the plant without a permit.

In more recent times mortgage companies have picked up on the specie as a potential threat to their investment and there are numerous stories of refused mortgages and sales which have fallen through due to the discovery of the specie in a far-flung corner of the garden.

So, what of the scare stories? Is it destructive? Can it grow THROUGH concrete and destroy foundations? Are we all doomed? Well, safe to say, no. Without doubt, Japanese knotweed is a major issue, but a lot of the internet chatter and newspaper scare stories are overly exaggerated. It can damage hard structures if left unmanaged but more often than not, it takes the path of least resistance, growing through cracks and exploiting weaknesses that already exist. Its ability to spread from small fragments and the persistent ability of the rhizome from which it grows each year make it a specie that should be carefully managed but not one that should be feared or avoided at all cost.

For a property developer on a brownfield site, Japanese knotweed is generally an ex-

pensive inconvenience, but certainly a manageable one. As they can rarely wait for herbicide to take effect over a 3-year cycle of treatment the most likely course of action is to excavate and remove all the contaminated soil to specially licensed landfill; in the southwest this can cost between £1500 and £2500 per 20t tipper lorry with each 10m<sup>2</sup> of the plant producing up to 5 loads, the costs soon mount up. However, these costs can soon be recouped by the sale of the properties on the freshly decontaminated land.

Knotweed growing on the river bank causing an ecological issue by out competing our native vegetation can be dealt with via the more economic route of herbicide treatment, but even then the costs for a 3 year program are likely to be in the region of £15 per m<sup>2</sup> - a significant expenditure for a wildlife or rivers trust on a shoestring budget. For the new purchaser who requires a mortgage there are numerous companies which offer an Insurance backed warranty to compliment a 3 year program of treatment – I recommend a member of the recently formed trade bodies the Invasive Non Native Specialists Association ([www.innsa.org](http://www.innsa.org)) or the Property Care Association ([www.property-care.org/skill/invasive-weed-control](http://www.property-care.org/skill/invasive-weed-control)).

Devon County Council are always interested to hear of Japanese knotweed beside the road which is recorded online via the Devon Biodiversity Records Centre [www.dbr.org.uk](http://www.dbr.org.uk) , there is annual treatment of these areas, you might see some random blue wooden posts by the road signifying that the areas are known about.

Japanese Knotweed is well established in the UK and Europe and is probably here to stay, for the future there are biological control programs which may give more effective control, meanwhile, it is up to us to undo the innocent actions of the Victorian Gardeners by utilising herbicides efficiently and preventing the spread of the plant through education.

Mark Prout  
Managing Director – Ebsford Environmental Ltd



# R Mears & Sons

## Chimney Sweeps & Stove Installation

Established over 30 years

Vac Brush. Full CCTV investigations.

Pots, Cowlings & Bird Protection fitted. Chimneys Lined.

Solid Fuel Appliances, Rayburns, Woodburners,  
Stoves, etc serviced. Fully Insured.

Tel: 01840 261221 Tavistock: 01822 664554  
Mob: 07737 533392  
[www.sweepdevon.com](http://www.sweepdevon.com)



# Soupa Troopers

All welcome to this community event



2019

Wednesday July 10<sup>th</sup>

Wednesday August 14<sup>th</sup>

Wednesday September 11<sup>th</sup>

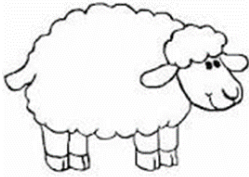
**From 12.30pm in Lewdown Victory Hall**  
**Soup and a Bread Roll, Tea or Coffee - £3**



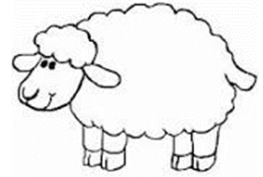
Followed by conversation & games  
(Optional)



S Hedger 06/19



**Sat. 13th July**  
10am to 12.30pm

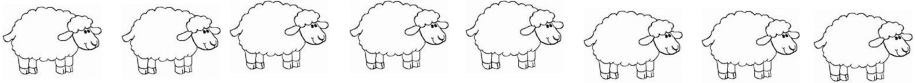


**Thrushelton Church  
Coffee Morning**  
at Lewdown Victory Hall

Another opportunity to try the churchwarden's best bacon baps (!)  
Also, coffee, tea, apple juice, cake and biscuits.  
Cake stall.

With display of Thrushelton Church Wool Project:  
The most recent runners, some finished and some  
still under construction. Also carding, locker hooking  
and our Wool Project photos.  
Please come and see what we have been doing!

~~~~~ **Everyone welcome** ~~~~~



**LEWDOWN  
VICTORY HALL**



**FLOWER & PRODUCE SHOW**  
**SATURDAY 24<sup>th</sup> AUGUST 2019 at 2.30**  
SCHEDULES AVAILABLE FROM  
**COPPER'S SHOP & P.O.**



## **FORD COTTAGE CHILDMINDERS**

Kathy Lawrence & Jo Kingdon

Over 10 years Experience

OFSTED Rated Outstanding

We will cater for your Childcare needs

Ages 4 months—14 years

**7.30am - 6.00pm weekdays**

We accept the Government funding for 3 year olds  
and 2gether funding for eligible 2 year olds.

As little or as much as you need.

We operate a 'Pay as you go' system - No charges for missed days

TEL: 01566 783317      Email: [childminders@hotmail.co.uk](mailto:childminders@hotmail.co.uk)



## **K. Moore & Son. PLANT HIRE**

**Specialising in all sitework,  
drives, sand schools, septic tanks  
hedging and all types of farmwork.**

Royal Oak, Newton Down, Lifton

**Tel:- 01566 784722**

**07785 540494**

Lewtrenchard WI

# Annual Afternoon Tea

In aid of:  
'Wig Wag' Safety Lights  
at Lewtrenchard School



Lewdown Victory Hall  
3-5pm  
Tuesday, 13th AUGUST  
Entrance £4.50

## *Lewdown Past*

*The Lewdown and area local history group*

# **Visit to Powdermills, Dartmoor**

**Date still to be fixed: Late July/early August**  
**Members will be contacted directly with further details**  
**Otherwise see village notice boards, or phone 783396,**  
**nearer the time if you are interested**

**Powdermills, near Postbridge, was one of the few gunpowder factories in Devon, operating primarily in the second half or the 19<sup>th</sup> century to supply explosives for mines and quarries. Extensive ruins or the many buildings remain, indicating the intricate and dangerous manufacturing process. There is also a small pottery, tea shop and Dartmoor hill pony exhibition, open at weekends, at the site.**

### **DOMESTIC HELP**

**Traditional help around the home,  
Help with cooking a meal, baking  
and light gardening.**

**self employed**

**Food safety and hygiene cert  
catering level two**

**Allergy awareness training**

**Insured**

**Tel 01566 783514**

**email  
laurrainebennett@outlook.com**

**fb/BakingUPCompany**

*Ian Smith Photography*

*Landscape*

*Portrait*

*Panoramic Landscapes*

*01566 779348*

*07768 312371*

*www.iansmithpanoramics.co.uk*

*email. smithian840@gmail.com*





# **Broadwoodwidge Annual Sunday Lunch**



**14<sup>th</sup> July 12.30 for 1.00pm  
Bratton Clovelly Village Hall**

**Cold Buffet Lunch  
Inc. Tea/Coffee £12/person**

**Grand Raffle**

**Please Book Your Ticket From**

**Rosie Smith 01837 871614**

**Marion Perkin 01566 776758**

**In aid of St. Nicholas Church Funds**

# Show Time

AT

Lewdown Victory Hall

ON

Saturday 24<sup>th</sup> August 2019

## New classes in:

### ➤ Cookery

Cottage loaf

Swiss roll

- For the Men

Ginger biscuits

Cider cake

### ➤ Handicraft

- Photography

A Sunset

A Church

At Work

- Alcoholic & Non-alcoholic drink

### ➤ Childrens

ALL NEW  
CLASSES

- Seaside painting
- Lego models
- Decorated bear
- Edible necklace
- Paper flowers

And Many More!

## Have a go and show your skills

Schedules available from Coppers Shop in Lewdown

### Evans Plumbing and Heating

*Based in Lydford Robbie Evans is your local Plumbing and Heating Engineer*

- Installations of Boilers
- Servicing, Maintenance and Repairs
- Central Heating Systems
- Bathrooms and Kitchens
- Blocked Drains and Burst Pipes
- 24hr Call Outs
- FREE No Obligation Quotes

**01822 820884**  
**or 07794053150**

[evansplumbingandheating@outlook.com](mailto:evansplumbingandheating@outlook.com)



POTTING SHED CERAMICS  
CLAY WORKSHOPS 2019

Throughout the summer of 2019, I will be running hand building in clay weekend workshops at my pottery in Lewdown, Devon.

There will be a garden theme and suggested topics are 'pinch & coil' garden pots, bird baths/feeders, decorative plaques, house signs, wind chimes, mobiles, sculptures.....

Dates are ~

July 13<sup>th</sup> & 14<sup>th</sup>

August 10<sup>th</sup> & 11<sup>th</sup>

Courses will run from 10am – 3/4pm on both days, with coffee & biscuits, a light lunch and tea & cake provided.

Price for the weekend course is £110 including all materials and your finished pieces once glazed and fired.

Places are limited to four people per course. Beginners very welcome!

*If you would like more details or to book please contact me on 07794 532961 or email [g.f.lee@hotmail.com](mailto:g.f.lee@hotmail.com)*

**A.J. NASH BUILDERS LTD.**

**Andy Nash**

**General Builder & Decorator**

Anvil Cottage  
Lewdown  
Okehampton

07769728425

01566 783274

[sarahnash@btinternet.com](mailto:sarahnash@btinternet.com)





## CHURCH NEWSLETTER

### Ministers

United Benefice of Lifton, Broadwood, Stowford,  
Lewtrenchard with Thrushelton & Kelly with Bradstone

**The Revd. Nick Law 01822 840229**

**nick123law@gmail.com**

The Rectory, The Down, Bere Alston, PL20 7HQ

Milton Abbot Benefice

**The Revd. Andy Atkins, 01822 870298**

The Vicarage, The Parade, Milton Abbot PL19 0NZ

### Churchwardens

#### Lifton-St Mary's

Mr J Courtice

01566 784562

Mrs G Whitford

01566 784242

#### Broadwood- St Nicholas

Mr D Perkin

01566 776758

#### Kelly with Bradstone-St Mary's

Mr W Kelly

01822 870393

Mr R Eggs

01822 870240

#### Marystowe—St Mary the Virgin

Mrs B Dawe

01566 784797

Mrs D Asbridge

01822 860378

#### Coryton—St Andrews

Mr G. Vicat

01822 820254

Mr R. Searight

01822 860148

#### Stowford—St John the Baptist

Mr C Chick

01566 783223

Mr S Hedger

01566 783765

#### Lewtrenchard—St Peters

Mrs A Westlake

01566 783909

Mrs R. Dawe

01566 783127

#### Thrushelton—St George

Mr A J Nash

01566 783274

Mr T Nash

01566 783320

### *Roman Catholic Services*

**Tavistock** Sunday 9.15 am  
Holy Days 10am

Fr. Greatbatch 01822 612645

(P. Sparling 01822 860355)

**Okehampton** Saturday 6pm  
Sunday 11am

Fr M. Darline Joseph

01837 52229

**Launceston** Sunday 10.00 am  
Holy Days 7.30pm

Rev. David Annear 01566 773166

### Quakers

Meeting for Worship

Tavistock every Sunday 10.00am.

4 Canal Road, Tavistock.

Contact – Kay Nicholson

01822 614596

Okehampton

Every Sunday 10.30am.

Children's Meeting 2nd Sunday

Community Centre, Okehampton

Community College, Mill Road,

Okehampton.

Contact - Eleanor Flack 01837 53475

### St. Mary the Virgin, Marystowe

Church services at 9.30am unless otherwise stated

1st Sun. in the month - Holy Communion ● 3rd Sun. in the month - Family Service

# **WORSHIP IN THE LIFTON BENEFICE**

The Churches of

St.Mary, **Lifton**. St.Nicholas, **Broadwoodwidge**. St.Peter, **Lewtrenchard**  
St.Mary, **Kelly**. St.John the Baptist, **Stowford**. St.George, **Thrushelton**

## **Worship in the Lifton Benefice - July**

Services listed in alphabetical order:

|          |                                                |
|----------|------------------------------------------------|
| 30th Jun | No services advised                            |
| 7th Jul  | 11.15 am Morning Prayer - Kelly with Bradstone |
|          | 11.15 am Holy Communion - Lewtrenchard         |
|          | 9.30 am Morning Prayer - Lifton                |
|          | 11.15 am Morning Prayer - Stowford             |
| 14th Jul | 10.00 am Benefice Service - Thrushelton        |
| 21st Jul | 9:30 am Morning Prayer - Broadwoodwidge        |
|          | 11.15 am Morning Prayer - Kelly with Bradstone |
|          | 9.30 am Morning Prayer - Lifton                |
|          | 11.15 am Holy Communion - Stowford             |
|          | 9.30 am Morning Prayer - Thrushelton           |
| 28th Jul | 9.30 am Holy Communion - Broadwoodwidge        |
|          | 9.30 am Morning Prayer - Lifton                |
|          | 11.15am Holy Communion - Lewtrenchard          |

There will be a short service on Wednesdays at 10.30am in Lifton.

Please email your services to Simon no later than the 10<sup>th</sup> of the preceding month for publication in The Community Newslink

## **Bridestowe Methodist Church**

**Preachers for July at 11.00am unless stated**

|      |            |
|------|------------|
| 7th  | A Banfield |
| 14th | D Ley      |
| 21st | R James    |
| 28th | P Webb     |

## **Lewdown Victory Hall**

**Bookings contact Esme or Roy Stacey**

**On 01566 783267**

**TJS fencing contractors**

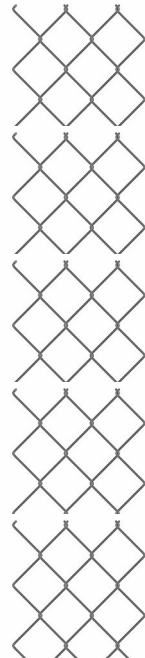
**Friendly reliable service,  
competitive rates**

**post and rail, stock netting,  
agricultural maintenance.**

**All to a high standard**

**No job to small**

**07832 187057**



## **Stowford Parish Hall Hire Charges 2018**

£3 per hour (Special rates for users of over 30 weeks per year £2 per hour)

Parties, Wedding, Funerals £20

General and Euro Elections £120

Tables £2 each (plus £20 Deposit) Any number of Chairs 25p each

**Contact Julie Chick on 01566 783223 for bookings and enquiries**

## OWL BOOKKEEPING SERVICES



**Bookkeeping, VAT Returns, Payroll**

25 years experience

**Tel: 01566 784170**

**Mob: 07851 314713**

**Email: [owlbookkeeping@outlook.com](mailto:owlbookkeeping@outlook.com)**

**aat** AAT Licensed  
Bookkeeper

## Right Way HR Services

### "SAFEGUARD YOUR BUSINESS"

*Advice on all aspects of employment law;  
Contracts of employment;  
Staff handbooks, HR Policies;  
Letters, templates and documents.*

**Call Richard on  
07825 090782**

e-mail: [richard@rwhrs.com](mailto:richard@rwhrs.com)

**CIPD**  
Championing better  
work and working lives

## ROGER WONNACOTT

GROUND & GARDEN MAINTENANCE

- ▲ GENERAL GARDEN MAINTENANCE
- ▲ SERVICES RENEWED & REPLACED
- ▲ LEAK REPAIRS & TROUBLESHOOTING
- ▲ MOLE / GRUNDOMAT WORK UNDERTAKEN
- ▲ MOLE & COMPRESSOR AVAILABLE



- ▲ COMPLETE JOB PRICING OR HOURLY RATES
- ▲ FULLY INSURED & BASED NEAR LAUNCESTON

**07919 912776**

**[rwonnacott@hotmail.com](mailto:rwonnacott@hotmail.com)**

## John Burrows Boiler Services

**Commissioning, Servicing and  
Breakdown Engineer**

**for**

**Domestic Oil Fired Appliances**

**AGA Rayburn Grant Trained  
OFTEC Reg No C9888**

**Tel: 01822 810494  
and 07782345395**

**E-Mail:**

**[John\\_campbellburrows@icloud.com](mailto:John_campbellburrows@icloud.com)**

**Gill House, North Brentor,  
Tavistock, Devon PL19 0LR**

**Special Rates for the Elderly**

**FUND RAISING FOR  
"HELP FOR HEROES"**

# Lewdown Grouped Parish Council

## Coryton, Lewtrenchard, Marystow and Thrushelton

*These abbreviated minutes are provisional until they are agreed and signed by the chairman at the next meeting of the parish council*

Meeting held on Monday 20th May 2019      Minutes No 718

### The Grouped Annual General Meeting

1. Appointment of Officers - Chairman – Cllr Harrop. Proposed Cllr Andrews, Seconded Cllr Dunn - Vice Chairman - Cllr Andrews. Proposed Cllr Vanstone, Seconded Cllr Perkins .
- Tree Warden – Cllr Wilkinson. Proposed Cllr Vanstone, Seconded Cllr Southcott

### Ordinary Meeting

1. Chairman's welcome – The new chair thanked the former chair Cllr Dunn for all he had done for the council and as a mark of appreciation presented him with a gift. A gift was also presented to Cllr Dunn's wife who had helped support him over the years.
2. Presentation from Martin Rich from Devon Communities Together – An informative insight to the organisations development the past 60 yrs. See their services [www.devoncommunities.org.uk](http://www.devoncommunities.org.uk)
3. 3.1 Welcome to new councillor – The chairman welcomed Cllr Terry Southcott  
3.2 Co-option of new councillor for Coryton Parish. Mrs Sylvia Crocker was proposed by Cllr Perkins and seconded by Cllr Andrews, Cllr Crocker was duly nominated.
4. Dispensations & declarations of Interest - None
5. The Parish's groups and associations open Forum – questions, comments and summary of the previous year activities. Soupa Troupers – An average monthly participation of 30+ members provided many people an opportunity to catch up with news whilst having a choice of homemade soups and a bread roll, followed by tea or coffee and a biscuit all for £3. Members can stay on afterwards for an afternoon of board games or jigsaws. To date £1500 has been raised to help with the Village hall funds. Lewtrenchard WI also provided a report on the past years activities, this included various outings, talks were given by David Bouch from Cothele, Mike Prettejohn a vet, Paul Rendell on military life on the moor. Further talks on food by Sylvia Crocker and Julie Turner's life as a store detective. Fund raising from the August cream tea event raised much needed money for the Devon Air Ambulance landing lights. Lewtrenchard is now 93 years in existence with over 30 members.
6. Minutes of previous meeting 717 of 29th April were signed by the chairman being a true reflection of that meeting.
9. Planning – Reference 1401/19/HHO, Proposal – Householder application for proposed single storey extension on West side and two storey extension on East side, Location – Marystowe House, Chillaton, PL16 0JA, Council decision – Support. Notice – Application for a new premises licence for Lobhill Farmhouse, Lewdown, Okehampton, EX20 4DT, serving alcohol to residents staying at the farmhouse. Sale of alcohol for consumption on and off the premises, Monday – Sunday 8am – 10pm. Representations to Licensing Dept. at WDBC by 28th May 2019, Council conclusion - No areas of concern.
10. Reports from Cllr Mott WDBC – Informed the council that she would be the representative for WDBC for the next 4 years also Councillor Southcott was also duly elected as a WDBC councillor.
11. Finance – 11.1 Report from Finance Officer showed a combined balance credit of



£10,140.81. The following items 11.2 – 11.6 were read and or signed by the chair and clerk as appropriate;

- 11.2 Annual audit - Certificate of Exemption signed by the chair
- 11.3 Annual Governance Statement 2018-19 were signed by the chair and clerk/RFO
- 11.4 Accounting Statement 2018-19 were signed by the chair and RFO
- 11.5 Annual Asset Register was signed by the chair.
- 11.6 Confirmation of the dates of the period for the exercise of public rights. The dates are 17th June to 26th July inclusive, see notice on website & notice boards
- 11.7 Authorised payments included: Dean Elliot –Grass cutting 2 of 10) £100.00  
Caroline Harris Bookkeeping Services – payroll services £150.00  
BHIB – Parish Insurance £358.62  
P. van Delft – Clerk salary (March – April) £ 318.12  
HMRC – Clerk paye £ 25.20  
ICO – Data protection + DD Mandate £ 40.00  
P. van Delft – Repayment for Conference tickets £ 43.82
- 12 Air Ambulance Landing Site – Conclusion of the official opening. A Bar-B-Que was held on Saturday 18th May with the official opening of the Landing Site speech from Cllr Mott. An unusual christening of the lights was then conducted. A good time was had by all who attended. The chairman thanked all the organisations, clubs, associations and individuals who had helped raised the £2768 needed to match fund the lights. The chair also thanked Cllr Andrews, Cllr Metherell and his wife for making the arrangements for the occasion and helping with the barbeque.
- 13 Lewtrenchard Primary School, wig wag lights – resubmission for WDBC grant was successful, clarification still needed to identify what the council needed and what D.H. required.
- 14 Councillor Reports – Cllr Perkins reported problems with Japanese Knotweed near the Ramps and Stoney Lane. Cllr Perkins also reported that another well attended fund raising event for play equipment was held during the bank holiday with a “Bake Off”, £313.25 was raised. The total raised to date is £825.04. Cllr Vanstone reported that two vehicles were now permanently parked on the grass verge below Alder Vineyard, Cllr Mott to look into the problem. Cllr Yeo reported that the Road to Wye now had road markings at the junction, and indications for intended repairs. Cllr Southcott reported that the Laurel hedge plants were not yet removed at the Wye junction. Cllr Mott to enquire. Cllr Dunn suggested that guidelines for insurance purposes should be drawn up for future events with consideration for fire extinguishers, first aiders and an events organiser.
- 15 Defibrillator Training - update - 6 people had registered an interest with a further 4 councillors also expressing interest in attending. Cllr Dunn suggested that more would turn up on the day.
- 16 Parishioners concerns over West to Middle Raddon Lane – The lane was visited by a councillor, feedback from parishioners with an interest in the Lane to contact the clerk.
- 17 Lewdown Y.F.C. Community Project - Tree Planting – Former quarry near Lobhill Cross has been suggested, the landowner has been contacted.

Date, time and place of next meeting – 29th July 2019 – Lewdown Victory Hall, 7.30PM

Parish Councillors

Andrew Harrop (chair): Tom Andrews (vice chair): Sylvia Crocker: Trevor Dawe: Colin Dunn: George Metherell: Nicola Perkins: Terry Southcott: Owen Vanstone: Brian Wilkinson: Graham Yeo:

# Stowford Parish Council



*These abbreviated minutes are provisional until they are agreed and signed by the chair at the next meeting of the parish council.*

**Meeting Held on Tuesday 14<sup>th</sup> May 2019, 7.30pm at Stowford Hall**

## **Annual General Meeting**

Appointment of officers -

Office of Chair - Cllr Bones, Proposed Cllr Hennessey, Seconded Cllr Dunn

Office of Vice Chair - Cllr Dunn, Proposed Cllr Bowers, Seconded Cllr Hennessey

### **Ordinary Meeting**

Members of the public open forum – three members – The issue of grass verge cutting was raised and when it would be expected. Cllr Edmonds informed council that the W.D.B.C. contractor would be making the first of two annual cuts shortly.

Dispensations & declarations of interest - none

Welcome to new councillor – The chair welcomed Cllr Bowers. Two parishioners wished to be become councillors, council proceeded with the co-opting of potential councillors.

Council member Leroy St Louis, Proposed Cllr Hennessey, Seconded Cllr Roberts.

Council member Lorna St Louis, Proposed Cllr Hennessey, Seconded Cllr Roberts.

Both new councillors were welcomed by the Chair.

Minutes of previous meetings 676 to be signed by the chair as a true and accurate record of the meeting.

Finance-

- 10.1 R.F.O. report – after authorised payments a current balance would show £5763.14.
  - 10.2 Annual Governance and Accountability Returns to be agreed and signed
  - 10.3 Certificate of exemption – were signed by the chair
  - 10.4 Annual Governance Statement were signed by the chair
  - 10.5 Accounting Statements were signed by the chair and clerk
  - 10.6 Confirmation of the dates of the period for the exercise of public rights, it was resolved the  
period would commence 17<sup>th</sup> June and end on 26<sup>th</sup> July.
  - 10.7 Asset register – was reviewed and signed by the chair.
  - 10.8 Review of Council Insurance – It was resolved to accept the proposal from Community first  
for the annual premium of £186.63 – payment to be made at the next meeting.
  - 10.9 Payments were approved for; DALC – Annual subscription £ 68.03  
Caroline Harris Bookkeeping – Payroll service £150.00  
Peter van Delft – clerk salary (April- May) £190.50  
HMRC – PAYE for clerk £ 20.40
  - 10.10 I.C.O. Data Protection – Annual subscription + dd £ 40.00
- Reports and news from Cllr Edmonds of WDBC – 15 new councillors for W.D.B.C, The Conservatives still remain the main party but with reduced seats. South Hams will continue to work with W.D.B.C. in sharing services that reduces costs for both councils. Euro Elections to be held on 23<sup>rd</sup> May, the council is prepared for pro-

cessing the election.

Reports from Councillors – Cllr Hennessey reminded councillors that a Parish Hall supper would be held on Saturday 18<sup>th</sup> May. Cllr Roberts drew attention to excessive surface water near the Sprytown crossroads junction towards Tinchay, this could cause a hazard for road users in poor conditions. The issue of poor maintenance of the kerbs on the West Devon Drive was raised again.

Cllr Edmonds would contact contractors for an estimate of costs, and what funding is available for

such work. Devon highways had no funds available for such work.

Cllr Bones raised the issue of the damaged finger sign opposite the Royal Exchange junction.

Cllr Leroy St Louis raised the issue of when resurfacing of highways around the parish would take place. Cllr Edmonds explained that D.H. had a programme for resurfacing work, Cllr Bones to enquire. Cllr Dunn raised the issue of flooding on the highway towards the Kennels, it was resolved

that Cllr Dunn would enquire what could be done.

Cllr Bones informed the council that training was available for new councillors. Cllr's L & L St Louis and Cllr Bowers expressed an interest. Clerk to enquire.

Lewdown YFC – Community Project - Tree planting – The old quarry in Lewdown was suggested as a possible location for some trees. Clerk to reply to YFC.

Date time and place of next meeting - 9<sup>th</sup> July 2018 – 7.30pm at Stowford Parish Hall

## Tim Dixon

**Domestic Plumbing  
&  
Home Improvements**

**01566 784028  
07903535881**

**careful & reliable service**  
***Bathroom and shower installation***  
***Tiling***  
***General home maintenance***  
***& repair***

## Roger's Painting & Decorating Services

Interior & Exterior Work  
Traditional & Modern Techniques  
City & Guilds Qualified  
25 years Experience



Mobile: 07783 819171  
Tel: 01566 784170



**CARPENTRY & JOINERY**  
**MARK CHIVERS - SOLE TRADER**

**HIGHLY SKILLED CARPENTER WITH OVER "38 YEARS" EXPERIENCE**  
**"NO JOB IS TOO SMALL"**

**FREE ESTIMATES PROVIDED - NO OBLIGATION**

**PLEASE CONTACT ME WITH ANY ENQUIRIES!**  
**Telephone: 01566 783743 Mobile: 0780 410 4812**  
**EMAIL: [M.C.CARPENTRY@OUTLOOK.COM](mailto:M.C.CARPENTRY@OUTLOOK.COM)**

## Stove & Chimney Specialists

Visit our Showroom at Red Post, Nr Bude, Cornwall. EX23 9NW

Supply and install woodburners & multi-fuel stoves

- Gas & Electric stoves
- Fire places & surrounds
- Chimney flues & linings
- Laying slate hearths & oak beams
- Chimney stack rebuilds & repairs
- Fireplace renovations
- Showroom with live working stoves

Showroom Opening Hours:

Mon-Fri 9am until 4pm

Saturday 9am until 2pm

Call us now for a FREE  
no obligation quote on:

**01288 381 852**



Website: [www.cblstoves.co.uk](http://www.cblstoves.co.uk)  
Email: [carl@cblstoves.co.uk](mailto:carl@cblstoves.co.uk)



# GRAHAM TOWNSEND GROUNDWORKS

**WATER DRAINAGE & GROUNDWORK SPECIALISTS**

**WATER LEAKS & RENEWALS**

**DRAINS CLEARED**

**GROUNDWORKS**

**TREATMENT PLANT**

**DRAINS REPLACED**

**ALL FENCING WORK**

**MOLING (No Dig)**

**DEMOLITION**

**PATIOS DRIVES**

**SEPTIC TANKS INSTALLED**

**FREE ESTIMATES**

**TEL: 01837 657687 / 01566 783788**

**MOBILE: 07866 465093**

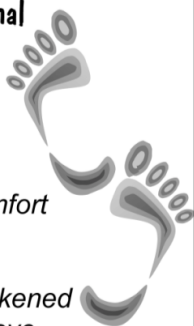
**email: [info@gtownsendgroundworks.com](mailto:info@gtownsendgroundworks.com)**

## **Mobile Foot Care**

*Sally Isaac S.A.C. Dip. FHPT/FHPP*

**Gentle and professional  
foot care in the  
comfort of your  
own home**

*If you suffer discomfort  
from corns, callus,  
ingrown toenails,  
cracked heels, thickened  
nails, etc. or just have  
difficulty cutting your toenails  
give me a ring*



**Telephone Sally  
07961 076 168**

WELCOME TO

**LOBHILL FARMHOUSE**

**BED AND BREAKFAST  
and HOLIDAY COTTAGE**



*Lobhill Farmhouse, Lewdown,  
EX20 4DT*

*Tel: 01566 783542  
0781 724 4687*

*Jane Colwill*

*[www.lobhillbedandbreakfast.co.uk](http://www.lobhillbedandbreakfast.co.uk)*



A LOCALLY BASED SERVICE AND REPAIR COMPANY FOR OIL FIRED HEATING/COOKING APPLIANCES.

MARK WOULD BE PLEASED TO OFFER COMPETITIVE PRICES FOR A QUALITY SERVICE. DISCOUNTS ARE AVAILABLE: PLEASE ENQUIRE

- ◇ BASIC BOILER SERVICE     £60
- ◇ BASIC COOKER SERVICE     £70

**PLUS THE ADDED BONUS OF NO VAT TO PAY!**

SO GRAB A BARGAIN SERVICE FOR YOUR BOILER OR COOKER BY CALLING:

**MARK ON 07814 976 076**

BROADWOODWIDGERBOILERSERVICE@GMAIL.COM

**PLUMBER**

**EST 30 Years**

**Lewdown  
& District**

**Tel: 01566 783562**

**Mobile: 07546 158318**

**OIL BOILERS** Breakdown Servicing Replacement

Genuine 24 hr service - Lots of common parts in stock!

**OIL TANKS** Replacement Relocation New Installations

Real emergency service – we can pump out a leaky tank to one of our temporary tanks and we can connect it up to your system – hows that for a problem sorted!

**PLUMBING & HEATING** As well as our renowned 24 hour

Emergency Plumber service we also carry out 'normal' plumbing and heating jobs – just ask!

**01566 783471     07596 997207**

**07599 078 805**

R & S McNamara, Lewdown, Devon EX20 4PT    Retained Contractors to all of the major insurers

OFTEC Reg C12274

[www.emergencyplumbersouthwest.co.uk](http://www.emergencyplumbersouthwest.co.uk)

For **Dogs & Cats** **Raw Meat Animal Feed**  
Convenient (400g blocks) *Frozen to preserve*

**Natural, just meat or meat and bone**

**No Preservatives, No Artificial Colouring's**  
*(both can be harmful to your animal)*

For information or to order



# Raw Rations Plus

website: [www.rawrationsplus.co.uk](http://www.rawrationsplus.co.uk)

Phone: 07831309666

Email: [sales@rawrationsplus.co.uk](mailto:sales@rawrationsplus.co.uk)

Post: Fairview Bungalow, Lewdown,  
Okehampton, Devon EX20 4DL



# Julie's

## Catering Van

**HOSPITALITY WITH A HUG**

**Available for your event**

**Contact 07572412421**

**Pulled Pork, Bacon, Sausages,  
Burgers, Chicken Curry, chips,**

**Hot & Cold Drinks. Homemade Cakes  
and Cream Teas in season.**

**Happy to discuss with customers just  
ring me or find me on Facebook**



### Lakeside, Roadford Lake

Open 7 days a week

Please see website for seasonal opening  
times

Café Gift Shop Sunday Carvery  
Weddings Conferences Events  
Walks Cycling  
Children's Play Area

Call 01566 784859

[www.swlakestrust.org.uk](http://www.swlakestrust.org.uk)

## **Lewdown YFC Report**

March saw our darts and male pool team win at the group round of pool/skittles/darts. At the Country round our darts team (Immy Osborne, Sam Moyle and Tom Hughes) won for the second year in a row- well done team!- and our pool team came a very close second!

April was a busy month beginning with our Easter bingo where we raised £540 for MIND & FCN, thank you to everyone who supported it. At the end of the same week our annual Traffic Light Disco was also a massive success the hall was jam packed, raising lots for club funds. Members also enjoyed a farm walk at the end of April along with Kenn Valley and Chagford by kind permission of the Courtier Family, Whiddon Down. We looked around there new rotary parlour milking 300 crossbred cows an impressive setup.

Early May saw around 20 members travel up to Basildon to the New Holland Factory. A very enjoyable experience with great hospitality from NH, I hope all members enjoyed this tour. May also saw Devon County Show... As a club we entered the promotion board and for the first time in many many years the Club Cubicle- we came 18th out of 26 which is fab for our first time! Well done to all members who entered individual items and stockjudging

The end of May saw Devon Field Day where Oli Smith-Burkitt, Richard Stevens and Harry Cole won the fencing easily and are through to the South West Area round. Adam Wonnacott won Clay Pidgeon shooting and is through to the National Finals in July- good luck! Becky Dennis also won Lamb Stockjudging and is through to the SWA Stockman of the year. South West Area Competition day came in early June where our Fencing team won against 5 other teams and are through to the National final- Well done boys good luck for July!! Becky also had a successful day with Stockman of the year winning the Senior Beef 26 and under and coming third overall in the senior 26 and under being one of the youngest in the seniors- another successful day for Lewdown YFC!

We've just had our annual Big Breakfast raising funds for Lewdown hall kitchen refurbishment with a new addition of a cake sale which worked really well. Thank you to everyone supporting and making this event really successful raising £705.10!

### **A BIG THANK YOU TO LOCAL BUSINESSES DONATED**

#### **FOOD FOR BIG BREAKFAST:**

**THE CLOVELLY INN (01837 871447)- BACON**

**OKCROFT PRODUCE(01409 211 333)- SAUSAGES**

**COPPERS SHOP- MUSHROOMS**

**ELLIS BAKERY (01822 613795)- BREAD**

**EMMA AND DEAN SUMMERSBY- EGGS**

**YFC MEMBERS- CAKES**



# Stacey

## Rural Business Administration

### BOOKKEEPING & VAT RETURNS

to trial balance using QuickBooks Online, Making Tax Digital compliance

### FARM RECORD KEEPING

all cattle & sheep records, movement reporting, vet & med records

### WATER REGULATIONS

records, maps & compliance

### FARM ASSURANCE

records, maps, compliance & inspection assistance

### BASIC PAYMENT SCHEME

applications, mapping changes, Young Farmer/ New Entrant applications, Entitlement Trading

### WASTE EXEMPTIONS

registrations

### STEWARDSHIP APPLICATIONS

Mid Tier, Water Capital Grants, Productivity Small Grant, Hedgerow & Boundary Grant

### PAYROLL

weekly or monthly with payslips & end of year returns

### GRAZING LICENCES

**Fiona Stacey**

Tel: 07870 632395 / 01566 783418

Email: [fiona@staceyruralbusinessadmin.co.uk](mailto:fiona@staceyruralbusinessadmin.co.uk)

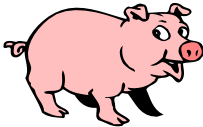


We've partnered with QuickBooks Online  
Ask us for more information



**Fidgits Cleaning Service**  
For all your domestic cleaning needs  
Fully insured. References available.  
Price available on quote  
Telephone 07974496236  
Email: [fidgitscleaning@outlook.com](mailto:fidgitscleaning@outlook.com)

**FOR SALE**



**Pork & Sausages**  
Enquiries Please Contact  
**Colin on 01566 783279**

**The Clovelly Inn**  
Bratton Clovelly



Torben,

Suzy,

Alex & Thomas  
look forward to seeing you  
**01837 871447**

# CANNON BARN PODIATRY & FOOT PAIN CLINIC

Specialists in Lower Limb Musculoskeletal Conditions including:  
Heel Pain | Plantar Fasciitis | Achilles Tendonopathy | Mortons Neuroma

## SWISS DOLORCLAST RADIAL SHOCKWAVE THERAPY CLINIC

General Chiropody & Podiatry Patients very welcome.

*Helping you walk towards pain free...*

Call: 07946 473972

[www.cannonbarnpodiatry.co.uk](http://www.cannonbarnpodiatry.co.uk)

1 Cannon Barn Cottages | Lewdown | Nr Okehampton EX20 4BU



## Broadbury Landcare

All Aspects of Garden Maintenance  
and Landscaping

Fully Qualified Fully Insured Free Estimates  
10 Years Experience

**Andrew Barton** 07532 216216

## A C WORTH BUILDERS



GENERAL BUILDERS, DECORATORS,  
PLUMBING & HEATING,  
PURPOSE MADE JOINERY etc.

BIRCHAM, LEWDOWN, OKEHAMPTON, DEVON EX20 4BU

Email: [acworthbuilders@aol.com](mailto:acworthbuilders@aol.com)



Tel: 01566 783282

Keith: 07778 471648

Andy: 07867 524515





## **T C M Plumbing**

Burst pipes? Tap dripping? Overflow running? Valves Leaking?  
Radiators not getting hot? Gutters blocked or leaking?  
Based locally at Inwardleigh we cover the surrounding areas  
Helping you with your plumbing needs no matter how small

**Contact Tim Morgan on 01837 810599**  
**Or visit our website [www.tcimplumbing.org.uk](http://www.tcimplumbing.org.uk)**  
**to see what we can do for you**

## **BODYMAINTENANCE.CO.UK**

**Sports massage, injury & pain clinic**

**Launceston - Okehampton**

**Highly experienced in providing effective treatments for acute, chronic, radiating and referred pain, strains & sprains. Free consultation and advice available.**

Please contact Clive Lacey on ...

**01566 783609 / 07747112019**

Or email - [clivelacey@bodymaintenance.co.uk](mailto:clivelacey@bodymaintenance.co.uk)

Further info - [www.bodymaintenance.co.uk](http://www.bodymaintenance.co.uk)

## **J.D. HALL** **CARPENTER AND JOINER** **(OVER 30 YEARS EXPERIENCE.)**

**FOR ALL YOUR WOODWORKING NEEDS**  
**CALL 01566 783566 OR 07881 752822**  
**[www.jdhalloakconstruction.co.uk](http://www.jdhalloakconstruction.co.uk)**

# Gardeners



Enjoy the Winners Circle  
For that champion veg  
Collect your own FREE



Proper Well Rotted  
*The Only Local Source of  
Pedigree Fell Pony Plops*

01566 783471

Free Bags Available!  
Trailers welcome!



## SWIFT GHIMNEY SWEEP



CONTACT STEVE

01566 783435

07890467406

- Brush and vac
- Certificate issued
- Your local friendly sweep

## Septic Tanks

### Emptied

Phone: 01805 601203

Mobile: 07831 241531

Leave a message, we will  
return your call, or email:

[hearnhaulageltd@outlook.com](mailto:hearnhaulageltd@outlook.com)

**Small Lorry  
Available**

Card payment accepted

**Hearn Haulage Ltd**

# Tavy Turf

Pete Badge

01822 610998

07980564175

## Growing & Supplying

Turf, Topsoil & Compost

Acres of weed treated turf all ready to be cut.

All turf is cut fresh then supplied direct to your drive.

Topsoil and Compost dry stored

## Landscaping & Laying

Years of experience in clearing, planning, landscaping lawns & laying turf.

Diggers, Stone Buriers, levellers & graders

## Grass Cutting & Maintaining

Specialists in maintaining large lawns & playing fields.

Grass Cutting, Collecting, Disposal & Mulching.

Vegetation Clearance.

We only grow professional turf & use specialist machinery

## TOP SOIL

TOP QUALITY TOP SOIL FOR SALE

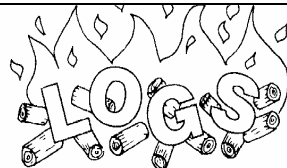
SEA SAND · ROAD PLANINGS

VARIOUS DECORATIVE GRAVEL CHIPPINGS & BUILDING AGGREGATES

NO VAT

01566 784645 OR 07771 823414

**Adrian Davey**  
**Painter and Decorator**  
Over 30 years experience  
Friendly and reliable service  
**01566 780 477**



supplier of

**HARDWOOD LOGS**

*Cut & Split to your requirements*

Tel. Colin Bennett: 01566 783514



# LYDFORD FOXES AFC

Lydford Foxes AFC are pleased to be offered the opportunity to play some matches at the recreation field in Lewdown. Matches start in September and continue until May. Our U15s are very much looking forward to the new season beginning. In light of this, we are looking for someone who would be willing to serve some teas and coffees and perhaps a bacon sandwich on match day mornings.

If you would be interested in this, please contact Hannah on 07584501502 or via email [hannah@lyddfordsfoxes.com](mailto:hannah@lyddfordsfoxes.com).

## **Lydford Summer Fair and Safety on Dartmoor Day**

This year's Summer Fair will be on Saturday 13th July, 11am - 4pm at Lydford Sports Field. We hope it will be a fantastic fun day with a great line up of entertainment with free entrance and free parking.

The Vikings will be on hand to re-enact another spectacular battle where audience participation will definitely be required! Adventure Okehampton and the climbing wall, which is always a massive hit, will be here as well as various stalls, lydford penny printing, the Storm Troopers group, games, a bouncy castle, ice cream, candy floss, face painting, etc.

Wingletang will be running the ever popular dog show with rosettes to be won.

Returning on the day will be the 5 mile cross country run, The Lydford Dash, for which we hope to attract the local and not so local runners as well as all the ones that competed last year in a bid to beat their time. To enter go to [lydfordparishcouncil.com/lydforddash](http://lydfordparishcouncil.com/lydforddash).

Also, the local emergency and rescue services will be on hand for you to chat to them and see at close hand the valuable work that they do.

We are also pleased to announce that the Western region of the British Balloon Club will be returning for their annual meet and carrying out morning and evening fly outs throughout the weekend and a static night burn will be held on the Saturday evening. Come to the Fair and purchase a raffle ticket for the opportunity to win a flight in one of these spectacular hot air balloons. (restrictions and weather permitting).

If that wasn't enough to tempt you, there will be a bbq, cakes, cream teas, Pimm's and a licensed bar. Also, during the Saturday evening while the balloons do their evening fly out and the static night burn is happening, there will be live music from The Humming Birds. So do come up to the field and enjoy the "spectacular" whilst having a glass of something nice from 6pm.

If you would like to have a stall at the event, please don't hesitate to contact Ruth on the number below.

As always we are looking for volunteers to help on the day, just for an hour or so, to help with marshalling the run, running games, helping in the tea rooms etc, so if you fancy lending a hand, please contact Ruth on 01822 820611 or 07515859596, email [parfitterole@gmail.com](mailto:parfitterole@gmail.com).

## The Wheel of Life

A new play by Ron Wawman

It is 12 years since Red Spider Company staged *Like A Buoy*, the community play written by me to commemorate the life of our local celebrity, Sabine Baring-Gould. As you may remember that play was performed in the round and was very much a musical romp that largely glossed over the troubled last years of his life. I am delighted to be able to tell you that on 26, 27, 28 March 2020, Red Spider Company will be staging a new play by me at the Parish Hall, Bratton Clovelly which this time lifts the lid on the surprisingly very troubled last eight years of his life. It is an intriguing story and far from being a musical romp.

*The Wheel of Life* is essentially a study in bereavement and the desire to write it came to me some months after the death of my wife, Margaret, when I suddenly realised I was at the same age and in the same boat that Sabine was in after the death of his wife, Grace in 1916. Then I thought to myself “now I know what he was going through, how he felt and why he struggled to cope.” There was absolutely nothing in Sabine’s published work or in biographies written about him to guide me and I have relied almost entirely on letters written by him to friends and family and, to a lesser extent, on the unpublished memoirs of his daughter Joan and granddaughter Joyce, both of whom appear in the play.

The first act follows the troubles faced by Sabine and his family through the last two years of the First World War, while the second act highlights the problems facing the family after the war, including what they should do about Sabine’s worrying use of alcohol following the death of Grace. There are no villains, but a very interesting but probably innocent relationship that develops between Sabine and a strange young woman. This leads to alarm in some members of the family leading to tensions with Sabine when they try to do what they think is ‘the right thing’ for the family. A little light relief is provided by two grandchildren.

The play has a cast of 17 and takes place in a host of intimate short scenes located in 9 different locations and with rapid scene changes. As such it lends itself to theatre in the round, which is how it will be performed.

With many attractive and some quite challenging parts on offer Red Spider Company believes that there is much to attract actors to this play. We therefore want to throw the net as wide as possible when it comes to casting.

We therefore plan to hold a group read through and audition for the play from 3 pm on 14 July at Lewdown Victory Hall to which all will be very welcome. You do not have to be a member of Red Spider Company to attend and you do not have to commit yourself to taking things any further if you would rather not. Just come and enjoy yourself. I am delighted to be able to tell you that Anthony Richards, the professional director who was with us for *Like A Buoy* will be with us for the read through.

If you have any queries please contact Ron at [ronwawman@googlemail.com](mailto:ronwawman@googlemail.com)

**EMERGENCY NUMBERS**  
**FIRE, POLICE, AMBULANCE**  
**999**

*For all other information and contact  
with Police stations call 101*

**Your local police contact for  
Lewdown. Chillaton. Stowford Lifton  
area is -  
PCSO SEONIAD GREENWOOD**

**Please contact via 101**

**For Neighbourhood & Farm Watches  
and crime prevention advice**

**For HORSE WATCH  
Gina. 01837 840716**

**Floodline** 0345 988 1188

**Parish Clerks**

Lewdown Grouped

Peter van Delft 01566 783023  
lewdownnpc.clerk@gmail.com  
[www.lewdowngroupedpc.org.uk](http://www.lewdowngroupedpc.org.uk)

Milton Abbot Grouped

Shane Honey 01822 840454  
shanehoney7@hotmail.com  
[www.magpc.co.uk](http://www.magpc.co.uk)

Stowford

Peter van Delft 01566 783023  
stowfordclerk@gmail.com  
[www.stowfordparishcouncil.org.uk](http://www.stowfordparishcouncil.org.uk)

**West Devon M.P.**

Geoffrey Cox M.P. 01822 612925

**County Councillor**

Kevin Ball 07870 377879

**Borough Councillors**

Milton Ford Ward

Mr Neil Jory 01822 860342

Bridestowe Ward

Terry Southcott 01566 783079

Caroline Mott 01837 861212

Tamarside Ward

Chris Edmonds 01566 784794

**SCHOOLS**

Lewtrenchard 01566 783273

Lifton 01566 784288

Milton Abbott 01822 870273

**COLLEGES**

Tavistock 01822 614231

Okehampton 01837 650910

Launceston 01566 772468 / 773918

**RING AND RIDE SCHEME**

Okehampton Area 01837 55000

Tavistock Area 01822 618028

**COMMUNITY GROUPS**

Cricket Club 07847111330

Chillaton Football Club 01822 860476

Lamerton Pony Club 01822 860350

Lewdown Past 01566 783396

Lewdown Residents Assn 01566 783320

Lewtrenchard W.I. 01566 784104

Lifton Benefice Churches

The Revd. Nick Law 01822 840229

Lifton Surgery 01566 784788 or 111

Red Spider Company 01566 783505

Recreation Field 01566 783367

Stowford Hall 01566 783223

Victory Hall 01566 783267

Youth Cricket 07847111330

Young Farmers 07531 286011

**ADVICE HELPLINES**

Citizen's Advice Bureau 08444 111444

West Devon Women's Aid 0183755228

Age Concern 01752 665424

Health Info Line 0800 665544

Homelessness Trust 01822 615259

Parentline 0800 8002222

Relate 01392 275681

Samaritans 08457 909090

Tavistock Area Support Services (TASS)

(Age UK is at TASS) 01822 616958

Transport to Health 01822 617525

Victim Support 01822 820455

Youthwise Okehampton 01837 54004

**SHOP & POST OFFICE**

Copper's Post Office & Stores Lewdown

01566 783218

**Newslink Day**

Come and help put the next Newslink  
together.

**Wednesday 24th July 2019**

**2pm @ Victory Hall**

We would welcome your assistance in  
collating the pages, stapling or folding  
the magazine... and you get a cup of  
tea and a biscuit.