

The Area Magazine for Lewdown, Stowford, Thrushelton,
Lewtrenchard, Chillaton, Coryton & Marystow

December 2025 - January 2026



community newslink

for all that's going on in your area...



Published by the Lewdown Residents Association

Registered Charity Number: 1071808

Funded by the Subscribers, Advertisers, Sponsors & Area Churches

**Fire/Police/Ambulance
Emergency 999**

All other contact with Police 101

Police Contact/Crime Prevention
PCSO Seonid Greenwood 101

Neighbourhood & Farm Watch
Horse Watch Gina 01837 840716
Floodline 0345 988 1188

Parish Clerks
Lewdown Grouped
Peter van Delft 01566 783023
clerk@lewdowngroupedpc.org.uk
www.lewdowngroupedpc.org.uk

Milton Abbot Grouped
Jane Savage
clerk.magpc@outlook.com
www.magpc.co.uk

Stowford
Peter van Delft 01566 783023
stowfordclerk@gmail.com
www.stowfordparishcouncil.org.uk

West Devon MP
Geoffrey Cox 01822 612925

County Councillor
James Grainger
james.grainger@devon.gov.uk

Borough Councillors
Milton Ford Ward
Neil Jory 01822 860342
Bridestowe Ward
Terry Southcott 01566 783079
Caroline Mott 01837 861212
Tamarside Ward
Chris Edmonds 01566 784794

Schools
Lewtrenchard 01566 783273
Lifton 01566 784288
Milton Abbott 01822 870273

Colleges
Tavistock 01822 614231
Okehampton 01837 650910
Launceston 01566 772468

Ring & Ride
Okehampton Area 01837 55000
Tavistock Area 01822 618028

Community Groups
Cricket Club 07847111330
Chillaton Football Club 01822 860476
Lamerton Pony Club 01822 860350
Lewdown Past 01566 783396
Lewdown Residents Assoc. 01566 783320
Lewtrenchard WI 01566 783765
Lifton Benefice Churches
Revd Philip Conway 01566 784462
liftonpriest@yahoo.com
Lifton Surgery 01566 784788
01566 784111
Red Spider Company 01409 221376
Recreation Field 01566 783367
Stowford Hall 01566 783223
Victory Hall 01566 783267
Youth Cricket 07847111330
Young Farmers 07443 461344

Advice Helplines
Citizen's Advice Bureau 08444 111444
West Devon Women's Aid 01837 55228
Age Concern 01752 665424
Health Information Line 0800 665544
Homelessness Trust 01822 615259
Parentline 0800 8002222
Relate 01392 275681
Samaritans 08457 909090
Tavistock Area Support Svcs. 01822 616958
Age UK 01822 616958
Transport to Health 01822 617525
Victim Support 01822 820455
Youthwise Okehampton 01837 54004

Shop & Post Office
Copper's Stores 01566 783218
Lifton PO & Stores 01566 784211

Front Cover Picture

Description
A Festive Devon Christmas Street.
Illustration: Generated using AI

newslink archive
www.rawrationsplus.co.uk/lraarchive.html

For us to be able to print and distribute the community newslink it costs approximately £500 a month.

Please make an annual donation of £5+ for yours to:

Account name: **Lewdown Residents Assoc.**
Sort code: **090154**
Account number: **97666081**

Thank you for your support

community newslink

Produced by Lewdown Residents Association

A magazine providing news, information & items of interest for the areas of Lewdown, Stowford, Thruschelton, Lewtrenchard, Chillaton, Coryton & Marystowe

Established January 1999
Issue No. 296 December 2025 - January 2026

Editor: Simon Hedger
St. Anthony's, Stowford, Lewdown, Okehampton EX20 4BY
Telephone: 01566 783765 Email: newslink@hedger.biz

Production, Distribution and Delivery Helpers:

Tim & Sarah Nash, Simon & Monique Hedger, Terry Southcott, Andy McCarthy, Ruth Dawe, Audrey Jones, Tom Andrews, Mike Bickell, Esther Van Delft, Rita Squires, Bob Holland, Julie Chick, Coppers Stores, Keith Abayomi-Turner

All news, photographs, reports, events, etcetera for NewsLink need to be sent to the Editor by the 15th of the preceding month.

We welcome your articles / items / advertisements. Though we do our best, we cannot guarantee to publish all that is sent to us.

B&W advertising in newslink is free for Charity events in our local areas.

Adverts for events outside of the area and for businesses are priced as follows:

	Black & White	Colour
1/4 page	£4/month or £40/year	£6/month or £60/year
1/2 page	£8/month or £80/year	£12/month or £120/year
Whole page	£12/month or £120/year	£16/month or £160/year

Please note that advertising prices are subject to VAT at 20%

Good evening dear readers, and welcome to this your double issue Christmas and New year edition of this venerable magazine.

To start with some sad news. Two cowboys are lost in the desert. One cowboy sees a tree that's draped in bacon. "a bacon tree! We're saved!" He says. He runs to the tree and is promptly shot up by loads of bullets.

It wasn't a bacon tree after all, it was a ham bush.

Recently, Nick and myself, sat down one evening and ended up watching a film, the title sounded rather interesting so we thought that we would give it a go. "The art of racing in the rain". It turned out to be one of the better films we have seen in a very long while, which isn't difficult as most of the films on Netflix seems to involve a failing Christmas tree farm, and someone having to come back, to try and revive it's fortunes, where he, she meets a rather handsome person and everything turns out perfect. Substitute Tree farm, for cake shop/factory, and you have the premise for most Christmas films, and i should know as i have watched a fare few over the years. Anyway back to The art of racing in the rain, it's wonderfully different, and is a delightful way to spend a couple of hours if there is a wet afternoon sometime, and if you don't like it, well how can i put this, basically you have no soul dude!. It also has the voice of Kevin Costner, as a golden retriever, what more do you want in a film.

Here's an interesting piece of information for you. Giraffes are 30 times more likely to be struck by lightning, than humans. Well that's not very festive is it, so how about, as a nation we eat 800 million mince pies each year, that's about 14 each. The present Mrs Nash can't stand the things, so I feel I have to make up her short comings.

Will close now as I have to get to bed. Tomorrow I have to be a responsible adult ,(yes really), because we are looking after the grandchildren. In truth though, it will be Nick who is looking after the young and old men in the house as in all honesty the male members will all be asleep by 8pm. Two are supposed to be (hopefully), but as for myself well who knows, but at least Nick will have the dog to keep her company.

Best wishes to you all, and we hope you have a wonderful Christmas and New year.

*I met a girl who runs a battery kiosk in the local park.
So basically, she sells C cells by the seesaw.*

*And finally for this year: What's Scrooges favourite board game.
Meanopoly.*



Stowford Community Christmas Coffee Morning & Village Craft Stalls

Come meet your neighbors for Coffee, Cake, and a chance to buy a special festive gift made within the village!

We meet on Tuesday 2nd December at Stowford Parish Hall
10AM to 12 noon. All Friends and Family Welcome.
£3 per person (Cash Only) which includes a hot drink and cake.

All Profits are donated to a charity chosen by the villagers.
If you need help with transport, please contact Tracy on 07973 327161



Soupa Troopers

All welcome to this community event

Christmas Special



Wednesday December 10th, then January 14th

From 12.30pm in Lewdown Victory Hall

Soup and a Bread Roll, Tea or Coffee - £4

Followed by conversation & games

From the Editor: I am extending my grateful thanks to everyone who has contributed to the content of **newslink** and for your continued support.

A **big thank you** to all who make donations or, like ST Lane, collect money on our behalf.

You might be interested to learn that today (22/11) Roadford (the areas largest lake) was only 68% full, despite all the recent record breaking rain that we have had.

Finally a thank you to Mr & Mrs Copper who have made the decision to retire after 57 years of loyal service to our community. We extend our wishes to them both for a very happy retirement.

I could really do with some editorial content for **newslink**. Perhaps about astronomy, sport, weather, science, nature or health. Why not put pen to paper and have a go?

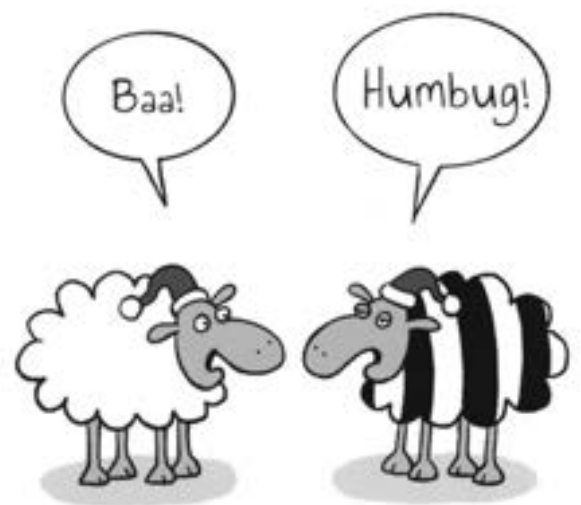
“Why did Santa quit smoking? Because it was bad for his elf.”

*“Which London Underground line is best with leftover turkey?
The Piccalilli line.”*

*“Why won’t Donald Trump be attending midnight mass?
Fake pews.”*

I wish everyone a peaceful and enjoyable Christmas

Ed 



Lewdown Victory Hall AGM

Friday 23rd January at 7pm

Lewdown Victory Hall - All welcome

A date for your diary: **Lewdown Victory Hall Spring Supper**

Saturday 7th March, more details to follow...

Sarah

The Poppy Appeal 2025

Many thanks to all of you for being so generous again.

Together we raised £2,118.28

My thanks to everyone who went house to house, or had poppies for sale on their establishment.

Tim

Farming Report

Well winter has officially arrived as all the cattle are now housed as of the 8th November. The cows came in a bit earlier as they're much heavier than the store cattle and the calves were weaned when they came indoors. We're hoping to take 3 weaned calves (2 steers and a heifer) to the native suckled calf sale at Exeter market in mid November, the trade has been flying lately so we're hoping for the same.

We've started buying sheep to fatten over the winter and sell next February/ March time, they have gone up around £10/15 a head from last year, the bidding is fierce in the markets. Let's hope the end product is in just the same demand and the price

reflects the trade we bought them at. With farming everything is a gamble as the markets can be so volatile and you don't know what the end product price will be, but as they say you have to speculate to accumulate!

Becky Dennis



For bookings and enquiries contact Julie Chick Tel: 01566 783223

Email: stowfordparishhall@gmail.com

A Defibrillator is located in the porch - Postcode EX20 4BZ

Charity No: 1020031

From Delft to Devon

Recipe - Beetroot in the Dutch style

Serve it with duck, ham, roast pork, sausages, or on its own with triangles on fried bread. Great for using gluts of beetroot, onions and apples.

2 large cooked beetroot, peeled

1 large onion

60g (2oz) butter

4 cooking apples, peeled, cored, chopped

Salt, pepper, grated nutmeg

Chopped chives

Chop the beetroot coarsely. Cook the onion until soft in the butter in a covered pan. Add the beetroot, then the apple and simmer (covered) for 20-30 minutes until they have blended into a thick puree. Season well, adding enough nutmeg to give a subtle, not quite identifiable flavour. Turn into a dish or individual ramekins, depending on how you are serving it. Sprinkle with chives, if liked.

It will freeze fairly well. As a family we think it's best served warm. Enjoy.

Esther van Delft (Nov 2025)

Secrets of the Past Beneath Our Feet

Have you ever thought of what you might be walking over? Meanwhile here are three items I have found whilst metal detecting.



Palstave axe head, Middle Bronze Age, 1500. yrs. BC. Found in Lewdown Area



Small Palstave axe head, Bronze Age, 1500. yrs. BC, found n Lewdown Area



Flat axe, 2000 yrs. BC. Early Bronze Age. One of only three of its type, found in Dorset, according to the Finds Liaison Office

If you have lost an item precious or otherwise, I would always try and find it for you, if you knew roughly where you had lost it, F.O.C. One must always have permission from the Farmer / Landowner before you go Metal Detecting. It is a fascinating hobby which I have enjoyed for many years.

Tony Butland

Murder Mystery Book of the Month: The Christmas Clue by Nicola Upson

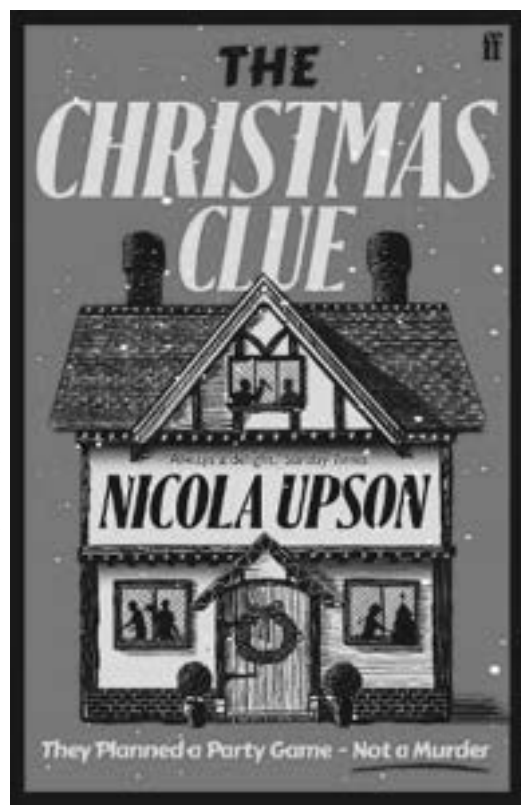
A murder mystery game becomes all too horribly real in this delicious slice of festive crime from the much-loved author of the Josephine Tey series...

Christmas Eve, 1943. Anthony and Elva Pratt arrive in a snowy English village to run a murder mystery game - and instead discover a real murder.

The Pratts had planned for festive cheer, despite the wartime shortages: with Elva's map of the hotel and Anthony's prop weapons to use as clues, the guests in their parlour game would move through the rooms to figure out whodunnit.

But when Anthony discovers the cook's sister Miss Silver beaten to death, they instead find themselves investigating a shockingly real crime. The hotel manager Mr Browning is trying to keep the peace but the guests are agitated, Colonel Colman is about to take over the hotel for the war effort - and the mysterious Mrs Threadgold hasn't been seen at all.

Publisher: Faber & Faber
ISBN: 9780571395026



Stowford's



at Stowford Parish Hall
Thursday 11th December 7.30pm
and Thursday 8th January 7.30pm

£4 per person at the door Teams of 2 - 6 people
Bring your own drinks, we provide the nibbles.
(All profits go to charity)

Stowford Parish Hall

The committee of Stowford Parish Hall would like to thank everyone who came to our autumn supper on 17th October. A fantastic evening was had by all, good food, great company and a wonderful time, what more can we say.

We also wish to thank the parishioners for their donations, who wanted to come along to the supper but for reasons were unable to attend. Their support is very much appreciated.

We donated many prize items for the raffle. Those amazing contributions made for a great end to the evening, thank you everyone.

Your help has so far managed to raise £714, money that will go towards maintaining the hall. We also wish to continue improving the hall and have plans for some further improvements that will benefit its users.

We also wish to thank the Stowford Community Coffee Morning volunteers for providing us a donation of £200. This money will go towards replacement pads and battery for the defibrillator, thank you.

We hope to see you all at our 35year celebration on 4th May 2026, details will be provided nearer the time.



Lewdown Speedwatch Group

- Are you concerned by the speed of vehicles?
- Had a near miss turning onto the old A30?
- Can you spare an hour twice a month?
- Want to make a difference?

At present we do not have sufficient operators to get a group of three (3) together to work effectively monitoring speeds and educating people to drive slower in the built-up areas.

We need to increase the number of volunteers within the pool of operators. The bigger the pool of operators the less time individual people spend out but the more often a group can get out.

If you wish to know more, please contact Terry Southcott (lead coordinator) for more information on 07831 309666.

The North Tamar Mission Community



St. Mary the Virgin,
Kelly with Bradstone

St. Mary the Virgin,
Lifton

St. Nicolas,
Broadwoodwidge

St. John the Baptist,
Stowford

St. George,
Thrushleton

St. Peter,
Lewtrenchard

Ministers

Lifton, Broadwoodwidge, Stowford, Lewtrenchard, Thrushelton & Kelly with Bradstone United Benefice

The Revd. Philip Conway, 01566 784462 liftonpriest@yahoo.com
The Rectory, Parsonage Court, Lifton PL16 0BJ

Milton Abbot Benefice

The Revd. Gill George, 07947 604160 revgillgeorge@gmail.com
The Vicarage, The Parade, Milton Abbot PL19 0NZ

Churchwardens

Lifton - St Mary's

Mrs E Brown 01566 784386

Sarah Chandler

Broadwood - St Nicholas

Mr D Perkin 01566 776758

Stowford - St John the Baptist

Mr C Chick 01566 783223

Lewtrenchard - St Peters

Mrs A Westlake 01566 783909

Mrs R. Dawe 01566 788838

Thrushelton - St George

Mr A J Nash 01566 783274

Mr T Nash 01566 783320

Kelly with Bradstone - St Mary's

Mr W Kelly 01822 870393

Marystowe - St Mary the Virgin

Amy Harrowell 01822 860181

Joy McSmythurs 01822 860630

Coryton - St Andrews

Mr G. Vicat 01822 820254

Mrs J Whitfield 07989 666427

From the Parish Priest

The seasons of Advent and Christmas should be times of hope, joy and celebration of the Love of God.

We are often so busy at this time of year and there are so many demands on our time, and finances, that we can too easily forget the heart of the Christmas story and season.

The world that Jesus came into in Bethlehem over 2000 years ago is the same world we live in. The Christmas Story has wealth and poverty, despots and dictators, violence and oppression, as well as the peace of the Christ child, the love of Mary and Joseph, and the joy of angels and shepherds.



It is my hope and prayer for us all this Christmastide that we can see the light, joy and love of Jesus Christ shine through all the darkness, sadness and hatred that we see happening in our world, and I invite you to come and join us in all the services, events and activities, which we have planned to celebrate this wonderful season .

Everyone is welcome to everything! There is always a special place for children in church, even if the event is not specially designed for them. I would much rather hear the noise of a child's presence than the silence of their absence!

So do come and join us in celebrating the wonderful truths of Christmas and help us to proclaim the love of God and pray for the world he loves so much.

With love and Prayers for a blessed and holy Christmas,
and a happy and peaceful New Year. .

Philip

Service times for December 2025 & January 2026

Any updates will be posted on the Mission Community Website <https://north-tamar-churches.org>

- 6pm on the eve Saturday 6th December Vigil Eucharist at Kelly**
7th December Advent 2
9.30am Parish Eucharist at Lifton
11.15am Parish Eucharist at Stowford
- 6pm on the eve Saturday 13th December Vigil Office at Kelly**
14th December Advent 3
9.30am Parish Eucharist at Broadwoodwidge
9.30am Morning Prayer at Thrushelton
11.15am Parish Eucharist at Lewtrenchard
- 6pm on the eve Saturday 20th December Vigil Eucharist at Kelly**
21st December Advent 4
9.30am Parish Eucharist at Lifton
11.15am GIFT service at Stowford
A service for the very young and those who care for them
6pm Community Carol Service at Lifton
- 24th December Christmas Eve**
4pm Family Crib Service at Lifton
6pm Christingles Service at Stowford
6pm Service of Nine Lessons & Carols at Broadwoodwidge
8pm Vigil First Eucharist of Christmas at Kelly
11.45pm First Eucharist of Christmas (Midnight Mass) at Lewtrenchard
- 25th December Christmas Day**
9.30am Eucharist for Christmas Morning at Thrushelton
11am Family Eucharist for Christmas Morning at Lifton
- 28th December Holy Innocents**
3pm Carol Service at Thrushelton
- 6pm on the eve Saturday 3rd January Vigil Eucharist at Kelly**
4th January Christmas 2
9.30am Parish Eucharist at Lifton
11.15am Parish Eucharist at Stowford

6th January **Epiphany**
7pm **Festival Eucharist at Lewtrenchard, followed by party**
See Separate notice

6pm **on the eve Saturday 10th January Vigil Office at Kelly**
11th January **The Baptism of Christ**
9.30am **Parish Eucharist at Broadwoodwidge**
9.30am **Morning Prayer at Thrushelton**
11.15am **Parish Eucharist at Lewtrenchard**
3pm **Plough Sunday Service at Thrushelton**
See Separate notice

6pm **on the eve Saturday 17th January Vigil Eucharist at Kelly**
18th January **Epiphany 2**
9.30am **Parish Eucharist at Lifton**
11.15am **GIFT service at Stowford**
A service for the very young and those who care for them

6pm **on the eve Saturday 24th January Vigil Office at Kelly**
25th January **Epiphany 3**
9.30am **Parish Eucharist at Broadwoodwidge**
9.30am **Morning Prayer at Thrushelton**
11.15am **Parish Eucharist at Lewtrenchard**

Wednesday Morning Eucharist: 10.30 at Lifton

There will be some occasions when the Wednesday Morning Service will be a service of Morning Prayer.

Discovering St. Nicholas

A Children's and Families event

*An hour of festive fun, with Art, Activities,
Crafts, Cake, Quizzes, Stories, and Songs,
exploring the life and legacy of*

St. Nicholas of Myra,

and his place in our Christmas Celebrations.

Everyone, of every age, Very Welcome



The Parish Church of St Nicholas, Broadwoodwidge

Sunday 7th December 2025 at 3pm:

Bridestowe Methodist Church

December 2025	1st	Drop in the ARK	10:30 - 12:30
	14th	A Banfield S	11:00
	21st	Bridestowe Worship Group	11:00
	21st	M Cooke US Carols	18:30
	28th	A Morgan	11:00
January 2026	4th	Drop in the ARK	10:30 - 12:30
	11th	G Yates	11:00
	18th	US at C of E	09:30
	25th	Rev C Jackson	11:00

St. Mary the Virgin, Marystowe

7th December	09:30	Holy Communion
21st December	09:30	Morning Praise
4th January	09:30	Holy Communion
18th January	09:30	Morning Praise

St. Andrew, Coryton

7th December	11:15	Holy Communion
20th December	16:00	Carols & Christingle
25th December	11:15	Christmas Holy Communion
11th January	11:15	Morning Prayer
25th January	16:00	Holy Communion

Quakers

Meeting for Worship:

Tavistock

Every Sunday 10.00am.

4 Canal Road

Tavistock

Contact: Kay Nicholson
01822 614596

Okehampton

Second Sunday 10.30am.

Fourth Sunday 10.30am

Second Sunday Children's Meeting

Ockment Centre

North Street

Okehampton

Contact: 01837 55805

Roman Catholic Services

Tavistock

Sunday 9.15am

Holy Days 10am

Fr. Greatbatch 01822 612645

(P. Sparling 01822 860355)

Okehampton

Sunday 11.15am

Sunday 5.30pm

Chagford - Saturday 5.30pm

Fr. A. K. Gundabathina 01837 52229

anil.gundabathina@prcdtr.org.uk

Launceston

Sunday 10.30am

Holy Days 7.30pm

Canon John Deeny 01566 773166



Beginning Advent Together
**A Special Fifth Sunday
 Celebration for Advent**

Advent Sunday
 Sunday 30th November 2025 at 11 am:

Lifton Community Centre

Followed by Lunch

EVERYONE WELCOME

Starting the new year as we mean to go on...

The Parish Church of St. Nicholas Broadwoodwidge



You are warmly invited to our annual evening of

Carols at Upcott Barton

Broadwoodwidge, PL16 0JR

An evening of Carols and Mulled Wine, Mince Pies and Pasties.

Heated Indoor Barn with Wheelchair Access.

Friday 12th December 2025 at 6pm



You are warmly invited to
**A Grand Celebration for
 The Feast of the
 Epiphany**

Tuesday 6th January: at 7pm

**Festival Eucharist
 at St. Peter's Lewtrenchard**

Followed by

A Pasty and Cake Supper Party

At The Lewtrenchard Manor Hotel

EVERYONE WELCOME

For catering purposes, please RSVP by 20th December to

liftonpriest@yahoo.com

The Parish Church of St Mary the Virgin, Lifton

Friday 19th – Sunday 21st December 2025

10am - 4pm



A wonderful display of Nativity Scenes of all shapes and sizes from all over the world.

Children's craft activities and competitions

Festive Flowers and Christmas Decorations

Seasonal Refreshments

Live Music.

Free Entry

Everyone Welcome

The South Tamar Mission Community



The Parish Church of St. George, Thrushelton

Come and join Bishop Mike To celebrate

Plough Sunday

Sunday 11th January 2026: at 3pm

Celebration Evening Prayer

Followed by Tractor Drive to Orchard Barton,

For the

**Blessing of the Tractors and Ploughs,
 And Tea!!!**

EVERYONE WELCOME



Come and help us celebrate the end of Christmas

The Feast of Candlemas

(Presentation of our Lord in the Temple)

Monday 2nd February 2025 at 7pm

Festival Eucharist

at St. Mary's Kelly

Followed by Celebratory Refreshments.



Lewdown Grouped Parish Council

Coryton, Lewtrenchard, Marystowe and Thrushelton

Abbreviated Minute No 794 of Ordinary Meeting

Held on Monday 17th October 2025 at Lewdown Victory Hall

These minutes are provisional until they signed by the chair at the next meeting of the parish council

Present: Cllrs Yeo (Chair), Alexander, Andrews, Perkins, Southcott, Wilkinson, Mott (WDBC), van Delft (clerk).

1. Apologies for absence: Mc Smythurs, Mincher, Metherell
2. New Councillors - Douglas Allison put himself forward for the seat of Coryton. A motion to Co-opt Mr Allinson was proposed by Cllr Alexander, seconded Cllr Andrews, all were in favour.
3. Members of the public open forum - Three members present, no issues raised.
4. Declarations of Interest - Cllr Yeo for item 7 (app2943/25/FUL) & Cllr Alexander for item 9.4
5. Minutes of previous meeting 793 being a true reflection of that meeting was approved and signed by the chair. Proposed Cllr Andrews, seconded Cllr Southcott, all in favour
6. Cllr Mott (WDBC) provided a monthly report via email, discussion took place on the proposed unitary changes.
7. Planning app. 2994/25/ARC - Application for approval of details reserved by condition 4 (windows/doors/timber boarding of planning consent 4139/21/LBC, The Blue Lion, Lewdown, EX20 4DL Council decision - Support - Proposed Cllr Alexander, seconded Cllr Southcott, all in favour.
Planning app. 2943/25/FUL - Demolition of existing dwelling & 1 x proposed new build dwelling to be constructed on same site, including driveway, & garage & refurbishment of existing stone workshop, reinstatement & refurbishment to corrugated metal shed, gardens & orchard area. Wheatley Cottage, Lewdown, EX20 4QW Council decision - Support - Proposed Cllr Alexander, seconded Cllr Wilkinson, motion carried. Cllr Yeo left the building whilst deliberation took place for this application.
8. Finance - Payments were authorised for Dean Elliott - Grass cutting £60.00, proposed Cllr Southcott, seconded Cllr Andrews, all in favour.
9. Play area updates
 - 9.1 Lease agreement - The solicitor requested amendments to clause 7.1 and clause 15. Both clauses were reviewed, the amendments were considered acceptable. Motion proposed Cllr Southcott, seconded Cllr Andrews, all were in favour.
 - 9.2 Review of the play equipment quotes - Cllr Perkins had provided a detailed spreadsheet of the three companies that had submitted quotations. After due deliberation it was resolved to proceed with the preferred supplier 'Caledonia' using Robinia timber as the main material for the equipment, the current cost of equipment and installation is £36,247.50. Motion proposed Cllr Southcott, seconded Cllr Wilkinson, all in favour.
 - 9.3 Planning application - Cllr Perkins suggested that since the preferred supplier for the equipment had been chosen the planning application could now be submitted. Cllr Andrews proposed to proceed with the application, seconded Cllr Wilkinson, all in favour. Cllr Perkins and the clerk to submit the plans. Cllr Perkin informed that she had forwarded to Lewtrenchard School the proposed play equipment for comment and consultation.
 - 9.4 Section 106 - no new information.
10. Cllr reports - Cllr Wilkinson enquired if the 'Neighbourhood Watch' scheme was still active, Cllr Andrews informed that N.W. had not been active for quite a while, Cllr Southcott informed that the N.W. schemes was currently administered with the 'Speedwatch' schemes office. Cllr Yeo suggested that the highways salt boxes needed to be checked, the clerk informed that no salt boxes were on his register, Cllr Yeo suggested that this could be a task for the snow-warden. Cllr Yeo informed that Lewtrenchard Manor would be having an 'open day' on 15th November 10.30 - 13.30. Cllr Yeo informed that there is defibrillator training to be held at Bratton Clovelly on 4th November in the evening. Cllr Yeo also informed that some work to the drainage at the Crossroads development had taken place, Cllr Southcott mentioned that it appeared that that work had been done to specification. Cllr Andrews informed that the defibrillator located at Lewtrenchard school was not accessible without the access code, Cllr Andrews to enquire about accessibility with L.S. Cllr Southcott informed that the Speedwatch team urgently needed additional volunteers to help with the monitoring, Cllr Southcott to place an advertisement in the Newslink.
11. Highways - Drainage damage at Lobhill. A meeting was held with DCC Cllr Grainger, Cllr Andrews and the clerk at the site of the drainage damage. Cllr Grainger had contacted Devon Highways to investigate the problem however overgrowth had restricted visibility, Cllr Andrews said he would trim the area that needed attention so that D.H. could see the magnitude of the problem.
12. Correspondence - New councillor training courses were available via DALC at Northlew, councillors interested in attending should contact the clerk for more details. The clerk informed that the maintenance company had serviced the landing lights earlier in the month, however one light bulb was faulty and was in need of replacement, the clerk informed that a replacement bulb was arranged for a cost of £485.05 + vat installed, replacement was due to take place on 29th October.
13. Meeting dates for 2026 - Dates were circulated for the councillors

Date, place and time of next meeting - Monday 24th November, Lewdown Victory Hall, 7.30pm

Lewdown YFC



NEWSLETTER

Bowling night

In mid-October, we hosted our annual New Members Bowling Night at Trethorne Leisure Park — a fantastic evening from start to finish! 17 members joined in, mixing new and familiar faces for some friendly competition and impressive trick shots. After bowling, everyone enjoyed time in the arcade, wrapping up the night with plenty of laughs and good company. We can't wait to do it again next year! 🎳



Upcoming Club Events/Meetings

23rd Nov - Go karting in Exeter with Tavistock YFC
 29th Nov - Neon Disco
 9th Dec - Christmas Poultry Bingo
 5th Dec - Christmas Tractor Lights Show
 17th Dec - Club Meeting
 21st Dec - Christmas Meal

Upcoming Events

15th Nov - Holsworthy Carnival
 21st Nov - Tarka Dinner and Dance
 13th Dec - Devon YFC Christmas Ball

Carnival

We kicked off carnival season at Okehampton, where our members had a great time dancing on the float and proudly took home 3rd place — well done, everyone! 🎉

Next up was Hatherleigh Carnival on 8th November — no awards this time, but the atmosphere was fantastic. Now we're getting ready for Holsworthy Carnival on 15th November — see you there! 🎉



Pumpkin carving

We wrapped up October with our Pumpkin Carving Meeting and Social, getting everyone in the spooky spirit! From classic faces to creative YFC designs, the carvings were fantastic. It was a great turnout for our first meeting of 2025/26 — full of laughter, creativity, and fun. A brilliant start to the year! 🎃

Officer Training weekend

Chairman Lilly and Secretary Millie represented our club at Devon YFC's Officer Training Weekend on 7th–8th November! ➤ They gained new skills, shared ideas, and had plenty of laughs along the way. Huge thanks to Devon YFC for a fun and informative weekend!



From Delft to Devon

My family history by Peter van Delft - Part Two

It is easy to start creating your basic family tree using the Internet. Much of the basic information was found scrolling through the documents available.

However, since we also wanted to find out the more interesting facts about the family members we also needed to go to the Dutch archives.

In the beginning, not knowing how to approach the system in the archives, we did get a little frustrated how best to source the information. Also, during WW2 the centralised archive in Amsterdam was bombed with many documents being lost to fire. Fortunately, original documents were, in the main, still available in the local archives. Those were located in Den Haag, Haarlem, Leiden, Rijnsburg and Zaandam. Much of the family information was sourced from these archives.

At the time of starting this journey I still had two very elderly aunts and one uncle on the van Delft side still alive. One day when visiting my aunt and uncle we got to talk about my grandfather's Pieter's profession. He was a teacher in the Amsterdam Lyceum school. During that visit we were shown a school reunion newsletter. This newsletter provided us with various contact details. To cut a long story short we were introduced to my 2nd cousin Ingrid van Delft. When we first met Ingrid, we were not sure what to expect. But, very soon we learned much about each other and of our families. This would be a wonderful experience that we still value today. More about Ingrid and her family later on.

Not knowing much about Dutch history, we needed to go back to basics and learn how Holland changed throughout the centuries and how those changes effected my family members. I'm not going back further than to the beginning of the start of my known lineage.

The end of the 'Eighty Year's War' with Spain (1568 - 1648) provided great opportunities for the inhabitants of Holland and that of my family. The end of the domineering Catholicism gave way to an open and freer Protestant future and that of the Dutch 'Golden Age'.

My family tree begins with the earliest ancestor that we uncovered:

- 1630-1712 Cornelisz Gerritsz van Delft (7 x Great grandfather)
- 1689-1740 Dirksz Cornelisz (6 x Ggf)
- 1712-1740 Cornelis Dirksz van Delft (5 x Ggf)

Next month, Hendrick van Delft (4 x Ggf) who had an interesting life and who married a woman of substance.

See 'Beetroot in the Dutch style' recipe from Esther on Page 8

Christmas Bingo

Chocolate prizes with a Meal Flyer,
Cash Flyer & Raffle

Monday 15th December

Eyes Down 8pm, doors open 7.30
Lewdown Victory Hall

All proceeds going to the Hall
Everybody Welcome



Draw Results

November

- £15 Liz Metherell #100
- £5 Eva Briggs #34
- £5 Dick Allen #176

Bratton Clovelly & Area Twinning Association



We are visiting Nonant
May 14 - 18, 2026

Please contact Monique if you would
like to join us: monique@hedger.biz





Lewtrenchard WI November Report



Barbara welcomed everyone to our craft session meeting with our member Julia Terry. We began by singing Jerusalem.

We received lots of positive feedback for the October open meeting with Nigel & Sarah Hicks from OVAID.

Although not a WI activity, Lynn, Ruth and several members and friends managed to send off 36 shoe boxes for the Romania appeal, well done all what a fantastic effort.

Sue produced another great newsletter, everyone is very happy with this important part of keeping members in touch with all that is going on.

This is a report of thank-yous as we extend another huge well done and thank you to all the poppy makers - keep on making them - we will make room for them all, Lewdown and Stowford Hall looked stunning with their display.

After a bit more business, Barbara handed over to Julia, who started to explain and show us how to stylishly decorate a polystyrene bauble. Julia brought lots of lovely pieces of fabric, sequins, pins & ribbons. The hall went very quiet for a bit as we all concentrated on creating our masterpiece, whilst trying to avoid not to get too sticky or get glued to our bauble. While waiting for the glue to dry on our nearly completed baubles refreshments were served, what delicious biscuits Joyce made. After a bit of chatter over tea we finished off our baubles by attaching a ribbon and a bow. They all looked lovely and everyone had a really nice time, even those members who are not normally into craft making. Thank you Julia for your time and patience, it must have taken quite a while to do all the prep work.

Date & venue for next meeting: Monday December 8, 19:00, Lewdown Victory Hall Christmas Party

Dates for your diary:

- 18th December Coffee morning
 - 12th January Monthly Meeting at 19:00
 - 15th January Coffee morning
- Walks are suspended until the spring



We wish you a merry Christmas and a happy New Year 🍷

Puzzle Page

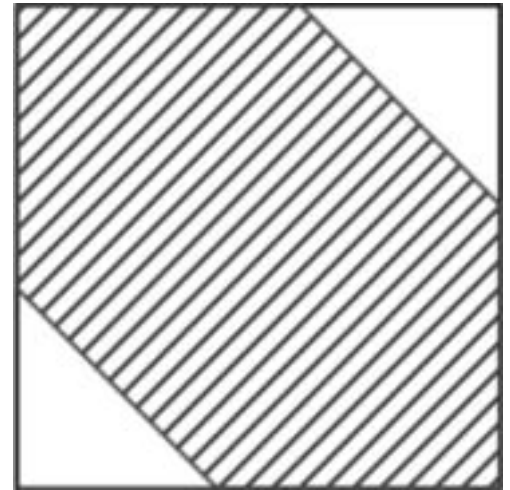
First: Every year the elves mark Santa's birthday by baking a cake, and adding a candle in the shape of each digit of Santa's age. Being rather mathematical, these elves like to add up the values of the candles, and call the answer a Santa number. For example, the Santa number of 723 is $7 + 2 + 3 = 12$.

What is the sum of the first 99 Santa numbers (the Santa numbers of 1, 2, 3, ..., 99)?

- (a) 746 (b) 862 (c) 900 (d) 924

Second: One of Santa's elves has a tricky parcel to pack. Its shape is a hexagon, with all sides of equal length. The elf has placed the parcel inside a square of side length 1, as shown in the diagram. What is the length of one of the hexagon sides?

- (a) $2 - \sqrt{-1}$ (b) $2 - 2 - \sqrt{\quad}$ (c) 1 (d) $2\sqrt{2}$ (e) $2 + 2 - \sqrt{\quad}$



Third: Santa has 11 boxes of chocolate. He wants 4 elves and himself to have the same number of boxes. How many more

boxes does he need to be able to do it?

Christmas Evil Sudoku

			2					1
	2	8					9	
				5			3	
4			3					5
7								
	1							4 7
			5	7	4			
9		1			3			
		6			1			

Fourth: Can you complete the Magic Square? so that the sum of any row, any column, or any main diagonal is the same.

	5	3
6		8

Holiday Competition: Win Tub of Celebrations

Write an illustrated short story of between 500 and 1,000 words.

Email story to the editor by January 10, 2026.

Results announced Feb



November Answers

Can you predict the gear's movement:

A

Math meets logic:

B

Visual IQ riddle that only the smartest can answer:

13

Spoon fork exercise:

B

What kind of photo's do
Elves take?

Elf-ies

Evil Sudoku

2	6	5	1	8	4	7	9	3
8	9	7	6	3	5	2	4	1
1	3	4	2	9	7	8	6	5
6	7	8	5	1	9	3	2	4
3	2	1	8	4	6	5	7	9
4	5	9	3	7	2	1	8	6
7	1	3	4	6	8	9	5	2
9	4	2	7	5	1	6	3	8
5	8	6	9	2	3	4	1	7

RED SPIDER YOUTH THEATRE present:

JACK AND THE BEANSTALKS

By Dianne ffitch



In a whimsical world where fairytales merge, Jack, Robin Hood, the 3 Little Pigs, Red Riding Hood, Snow White, and SuperGran unite to confront the Wicked Sheriff of Nottingham. Outsmarting wolves, navigating enchanted lands, and battling Giants - fairytale magic makes anything possible.

BRATTON CLOVELLY PARISH HALL

Saturday 13 Dec - 7pm

Sunday 14 Dec - 3pm

TICKETS: www.seaty.co.uk/RSYTJack

Email: rsytheatre@gmail.com to pay on the door

Adult: £10. Under 12s £5

LAMERTON PRE: Point 2 Point Horse Racing 2026 □



DIG OUT YOUR DABBERS!!
MONDAY 2nd MARCH 2026

LEWDOWN VICTORY HALL
Lewdown Devon

**Grab your seat! Doors Open 7pm
Eyes Down 7.30pm**

£10 for 8 Game Card • Extra Games • Raffle
Win Fresh Chickens for Full House
With prizes for 1 line & 2 lines!!

WIN 3 PICNIC HAMPERS

to include p2p passes for the P2P at Kilworthy nr Brentor



on 22nd MARCH 2026 □

From the Mountains of Japan

No.18 - Reflections on Autumn at Mirror Lake

With 80% of its land area being classified as mountainous, and 80% of that being forested, Japan has some pretty spectacular autumn scenery. “Koh-yoh-mi”, or “autumn leaves viewing” is a premium event in October and November. Many famous viewing spots therefore become insanely crowded, mostly with domestic tourists hoping to get a perfect day of blue skies while the leaves are still red and yellow, before the pre-winter brown sets in.

One of Nagano City’s most popular spots is up in the mountains a half-hour drive from our house, at Kagami-ike, which translates as Mirror Lake. Facing the jagged peaks of Togakushi mountain, one of Japan’s 100 most famous mountains (yes, they have a list), on a good day you can see a perfect reflection of the mountain in the lake’s waters.

However, getting there can be a stretch. Cut off by snow in winter, there are only two roads in and out, both narrow mountain lanes on which passing can be difficult. When we visited last weekend, we were lucky to spot a traffic jam of out-of-town cars up ahead, and parked in in a gravel hiking trail car park some way back from the main lake area.

A good thing too, as the line was for the main car park, which was rammed full. Walking the rest of the way, we then enjoyed a circular walk of the lake, which goes into the deep surrounding forest. There are bear warning signs everywhere, and in this season there have been a number of bear sightings, including one at the bus stop just two hundred metres from our house. There have been several attacks this season too, although one from a northern prefecture turned out to have been a guy who murdered his parents, then tried to blame it on a bear. In general, though, even though Asiatic black bears can be pretty terrifying, they rarely attack humans, and usually will run away if encountered.

On this occasion, while we didn’t spot any bears, we did see a troop of monkeys playing about in the trees.

After lunch by the lakeside and an obligatory visit to the lakeside shop, we were back in the car, attempting to get out, while even as the daylight faded, dozens of out-of-towners, who clearly had no idea what they were in for, still attempted to get in..

Chris Ward



Cocktail of the Month 'Christmas Aperol'

A light, refreshing Italian aperitif...

...with just a couple extra ingredients, you can turn the classic summery Aperol spritz into a festive winter spritz!

YOU WILL NEED:

- 100ml Aperol
- 100ml bloodorange juice
- 2 tbsp orange syrup
- 1/2 teaspoon ground cinnamon
- Some ice cubes
- 400ml Prosecco
- 1/2 orange
- 4 cinnamon sticks & springs of rosemary

METHOD:

Put Aperol, bloodorange juice, syrup and ground cinnamon in a shaker, mix for 30 seconds, put some ice cubes in glasses add the cocktail mix.

Top up with Prosecco, cut orange into slices and with the cinnamon stick and rosemary add to the glasses.



Stowford Parish Council



Meeting No 738 Minutes of Ordinary meeting held on 11th November 2025

These minutes are provisional until they are signed by the chair at the next meeting of the parish council.

Present: Cllrs Leroy St Louis (Chair), Law (Vice chair), Alexander, Chick, Lorna St Louis, Terry.
Cllr Chris Edmonds (WDBC), Peter van Delft (clerk)

1. Minutes of previous meeting 737 were signed as a true and accurate record of that meeting, proposed by Cllr Lorna St Louis, seconded Cllr Alexander, all were in favour.
2. Finance - 2.1 Payments were authorised for the following invoices Peter van Delft - clerk salary (Sept/Oct) £370.00 Royal British Legion (wreath) £20.00, Vision ICT - annual website hosting service £199.76. Proposed Cllr Terry, seconded Cllr Chick, all in favour. - 2.1 R.F.O. reported a credit balance after payments of £5,248.24, motion Cllr Alexander, seconded Cllr Law, all in favour. - 2.3 Draft budget for 2026-27 - A review of anticipated receipts and expenses were considered, It was resolved that the money set aside for grants should be reduced to £400 and that a sum of £125 is set aside for supporting the table tennis events at the hall.
3. Cllr Edmonds WDBC reported on the proposed local government reorganisation. The 'Districts' proposal is a '4-5-1' model, this includes the following:-
 - A unitary authority for West Devon, Teignbridge, South Hams and Torbay
 - A unitary authority for North Devon, Torridge, Mid Devon, East Devon and Exeter
 - Plymouth to remain a standalone unitary authority
 - The full case for change will be submitted to the government by 28th November
 - The government's decision is expected June 2026
 - Implementation is to commence on 1st April 2028.Cllr Edmonds also reported that the Appeal No Q1153/W/25/3365752 Sunnybrook Farm has been dismissed. Cllr Law thanked Cllr Edmonds and mentioned that it was useful to know the outcome of the decisions when they become available.
4. Reports from Councillors - Cllr Alexander reported that he checked all the grit bins and that they were all full, the pallet of grit bags held on land at the centrally located village place was still full. Cllr Terry enquired when the fibre broadband would be rolled out in the village, the chair informed that work appeared to be progressing well and that spring 2026 was thought that the network would be fully installed. Cllr Leroy St Louis reported that a parishioner expressed an interest in the vacant councillor seat.
5. Table Tennis - promotion and organisation. Cllr Leroy St Louis reported that at the last event 13 people attended an evening of T.T. Cllrs thought this to be successful enough to continue setting more events including 19th November and 2nd December, Cllr Law suggested that alternate Tuesday and Wednesdays could be an option. Cllr Chick suggested asking participants for their feedback. Further dates to be promoted on the Facebook page and Newslink once dates have been confirmed. Cllr Law thought that a donation sign should be more prominent. The chair thought that a £2 fee for adults could be charged with children going free under the age of 16.
6. Parish Questionnaire - draft questions and reply box - held over until the next meeting.
7. Highways reports - Fly tipping in Portgate was reported with WDBC, the waste was collected in 2 days. Councillors thought this to be an excellent response time.
8. Dog fouling - 7.1 Nuisance dog(s), dog(s) of leads - Cllrs reported that several new signs that ask dog owners to respect the law have been pinned up on various positions in the village. 7.2 Mobile Liaison Officer report and update - Cllr Edmonds reported that patrols were still in place and will continue for the time being. 7.3 Dog fouling in church grounds - Cllr Chick reported that significant damage has been caused by loose dogs in the grounds, video footage of the damage was shown to identify tracks in and around graves, it showed that those dog owners have showed no respect has been given for the sacred ground.
9. Mobile phone training - Training programme for parishioners - The chair reported that 13 members of the community have expressed a strong interest in the training. It was resolved that 'Devon Learning' will be contacted to provide a training programme in the new year. Advertisements will be placed in the Newslink and facebook once dates have been confirmed with D.L.
10. V.E. Day 75yr commemoration tree - Replacement of existing dead tree. It was resolved that a Silver Birch should be purchased for a sum of £65-£90, motion proposed Cllr Chick, seconded Cllr Law, all were in favour.
11. Meeting dates for 2026 were provided.

Meeting closed 8.50pm

Date time & place of next meeting: 13th January 2026 - 7.30pm at Stowford Parish Hall

Reflections of a Steam Engine Fireman

The Incident At Basingstoke

The passing of a signal at danger is a serious offence and we received a form one, but it was not up in front of the loco Shedmaster to state our case but an inquiry at Basingstoke in front of a board of trade inspector, meaning that if we were proved negligent we could be dismissed.

So on the day of the inquiry I signed on at Guildford loco, met my driver and traveled to Basingstoke, I had left my issued bib and brace overalls at home and put on my best trousers and polished shoes, cleaned my serge coat and looked quite respectful.

My driver was quite nervous and asked me if I knew the rules on exception of passing a signal at danger to which I told him what the exceptions were (I had refreshed rule 37 the night before).

On arrival at Basingstoke we were informed that the inquiry was being held on the downside buildings, so we informed the secretary that Guildford crew were in attendance, I was led away and placed in a waiting room on my own and sat for what seemed like hours waiting to be called. I had just purchased the Motor Cycle News so had something to pass the time, just before being called an ASLEF Official appeared and spoke to me emphasising that I must tell



the truth, strange I thought - I only know what I seen with my own eyes.

Then I was called, an experience I never want to repeat, I walked into a large room with the Inspector in front of me, a chair was in the middle of the room, on which I was invited to sit and was surrounded by sixteen officials from various departments of British Rail, loco dept,

signalman, permanent way, signal and telegraph and all three unions had sent a representative.

The inspector then asked me details from signing on the day of the incident to the actual incident. Getting the engine ready at Guildford, light engine to Woking, work to Basingstoke get relief by Salisbury crew, walk to loco etc. I was then asked to repeat the time from leaving the loco to the incident. I then then asked to inform him how many times a signal was permitted to pass a signal at danger as per the rules, the inspector then invited questions from the officials and they asked about my age (17) and experience, was I certain the ground signal was off, and strangely did the two white lights stay consistent, I answered all the questions and then was told I could leave the room.

I was guided into a large room with lots of railway workers drinking tea biscuit etc. and my driver with a huge smile on his face, he said we were the fourth crew to run by the signal that day but they had stopped short of the junction because the two white lights had flashed on and off. My driver said we are in the clear, have a cup of tea and we will return to Guildford.

Signal and telegraph at fault!

Tom

Table Tennis

@Stowford Village Hall

Ping Pong at the Village Hall!

A fun way to keep active, meet new people & unleash your inner champion
Join us for **Table Tennis**, no experience needed, just bring energy and a smile

All ages welcome - Bats & Balls provided

Friendly games, plenty of laughs. Whether you're a beginner or a backhand pro, it's the perfect midweek pick-me-up!

Tuesday 2nd December 2025

Tuesday 6th January 2026

Wednesday 21st January 2026

19:00 - 21:00

Donations welcome



It's close to the shortest day of the year and the kids are hyper so why not calm them down by bringing them with torches to the

Forgotten Garden of Lewtrenchard's Winter Solstice Event

Saturday 20th December at 6pm

St Peter's church + walk to the Manor Hotel Lewtrenchard

The candlelight event with a hot drink, mince pies and carol singing.
Everyone is welcome and carols will be helped along by the **Packhorse Singers**

For more details and updates see our website:

www.forgottengarden.co.uk/category/news/

TINHAY

BUILDING SUPPLIES LTD

Supplying quality building materials to the trade and DIY

**We're bigger
than you think**

Lifton

Tinhay Mill Industrial Estate, Tinhay, Lifton, Devon PL16 0AH
Telephone: **01566 784385**
Email: lifton@tinhaybuildingsupplies.co.uk

Launceston

Newport Industrial Estate, Launceston, Cornwall PL15 8EX
Telephone: **01566 771989**
Email: launceston@tinhaybuildingsupplies.co.uk

Tavistock

Pixon Lane, Tavistock, Devon PL19 8DH
Telephone: **01822 619509**
Email: tavistock@tinhaybuildingsupplies.co.uk

FREE LOCAL DELIVERY  

www.tinhaybuildingsupplies.co.uk

A.J.NASH BUILDERS LTD

Andy Nash

General Builder & Decorator



07769728425

01566783274


sarahnash@btinternet.com

IN THIS DESIGN

DESIGN AND CONTENT STUDIO

HELPING BRANDS STAND OUT

- LOGOS
- BUSINESS CARDS
- POSTERS & BANNERS
- LEAFLETS & BROCHURES
- SOCIAL MEDIA POSTS
- AND MORE

 @inthisdesign

 inthisdesign@outlook.com

Milton Abbot Grouped Parish Council

Please see our website for lots of information about Milton Abbot, Chillaton, Bradstone, Dunterton and the surrounding areas, along with a list of the Parish Councillors

www.magpc.co.uk

BLUE LION
INN



Blue Lion Inn, Lewdown

Charlie, Nicky, Charlotte, Georgia, Jonty & Alfie
Welcome you to our Family Friendly Pub

01566 783238

BLUE LION
INN



*Public House offering good food, real ales,
live music, pool, darts and BT Sports*

*For upcoming live music & quizzes etc. follow us on Facebook
Search for 'blue lion inn'*



Mobile Foot Care

Sally Isaac S.A.C. Dip. FHPT/FHPP



*Gentle and professional
foot care
in your own home*

If you suffer discomfort from

- corns
- cracked heels
- callus
- ingrown toenails
- thickened/tough nails

*or just have difficulty cutting
your toenails then
please ring me*

I'll come to you!

Telephone Sally
07961 076 168

WELCOME TO
LOBHILL FARMHOUSE
BED AND BREAKFAST
and HOLIDAY COTTAGE



Lobhill Farmhouse, Lewdown
EX20 4DT

Tel: 01566 783542
07817 244687

Jane Colwill

www.lobhillbedandbreakfast.co.uk

CBL STOVES

The Showroom, Unit 5
Red Post, Bude, Cornwall
EX23 9NW

01288 381852
carl@cblstoves.co.uk
www.cblstoves.co.uk



Registered
Heating
Business



- Stainless Steel twinwall flues
- Chimney Lining
- Iskoern Pumice lining
- Fireplace alterations
- Stove Installations
- Wood, Multifuel, Gas & Electric Traditional & Contemporary Stoves & Fires
- Chimney Rebuilds
- Slate, Granite & Glass Hearths
- Wood & Ceramic beams & surrounds
- Floating Shelves



R Mears & Sons Chimney Sweeps & Stove Installation

Established over 30 years

Vac Brush. Full CCTV investigations.

Pots, Cowlings & Bird Protection fitted. Chimneys Lined.

Solid Fuel Appliances, Rayburns, Woodburners,
Stoves, etc serviced. Fully Insured.

Tel: 01840 261221 Tavistock: 01822 664554

Mob: 07737 533392

www.sweepdevon.com



GRAHAM TOWNSEND GROUNDWORKS

WATER DRAINAGE & GROUNDWORK SPECIALISTS

**WATER LEAKS & RENEWALS
SEPTIC TANKS INSTALLED**

**DRAINS CLEARED
TREATMENT PLANT
ALL FENCING WORK
DEMOLITION**

**GROUNDWORKS
DRAINS REPLACED
MOLING (No Dig)
PATIOS DRIVES**

FREE ESTIMATES

TEL: 01837 657687 / 01566 783788

MOBILE: 07866 465093

email: info@gtownsendgroundworks.com

Roger's

**Painting & Decorating
Services**

**Interior & Exterior Work
Traditional & Modern Techniques
City & Guilds Qualified
30 years Experience**



Mobile: 07783 819171

Septic Tanks

Emptied

Phone: 01805 601203

Mobile: 07831 241531

**Leave a message, we will re-
turn your call, or email:**

hearnhaulageltd@outlook.com

**Small Lorry
Available**

Card payment accepted

Hearn Haulage Ltd

COLOUR PRINTING & COPYING

This service is available for a minimum of 10 copies at a charge of 5p/single or 7p/double sided copy.

For sale Copier Paper £4.75/ream

The Community NewsLink purchases its paper in bulk and as such is able to access competitively priced materials. We can currently offer our readers copier paper for the special price of £4.75 per ream, a vast saving on High Street prices. We recommend you phone to check availability and arrange a convenient time to collect.

**Contact Terry Southcott
Fairview Bungalow, Lewdown
01566 783079 or 07831309666**

All proceeds go to:
Lewdown Residents Association
who produce Community NewsLink

ROGER WONNACOTT

GROUND & GARDEN MAINTENANCE

- ▲ GENERAL GARDEN MAINTENANCE
- ▲ SERVICES RENEWED & REPLACED
- ▲ LEAK REPAIRS & TROUBLESHOOTING
- ▲ MOLE / GRUNDOMAT WORK UNDERTAKEN
- ▲ MOLE & COMPRESSOR AVAILABLE



- ▲ COMPLETE JOB PRICING OR HOURLY RATES
- ▲ FULLY INSURED & BASED NEAR LAUNCESTON

07919 912776
rwonnacott@hotmail.com



supplier of
HARDWOOD LOGS
cut and split to your
requirements
Tel. Colin Bennett:
01822 487259
Mobile:
07523172369

Lewdown Victory Hall

Bookings contact
Roy Stacey
on 01566 783267



Broadbury Landcare
All aspects of Garden Maintenance
and Landscaping
Fully Qualified Fully Insured Free Estimates
18 Years Experience
Andrew Barton 07532 216216

Raw Meat Animal Feed For Dogs & Cats

Convenient blocks *Frozen to preserve*

Natural, just meat or meat and bone

No Preservatives, No Artificial Colouring's
(both can be harmful to your animal)

Raw Rations Plus



For information or to order

website: www.rawrationsplus.co.uk

Phone: **07831309666** or **01566783079**

Email: sales@rawrationsplus.co.uk

Post: Fairview Bungalow, Lewdown,
Okehampton, Devon EX20 4DL



A C WORTH BUILDERS



GENERAL BUILDERS, DECORATORS,
PLUMBING & HEATING,
PURPOSE MADE JOINERY etc.

Kirtonia, Vale Down, Lydford DEVON EX20 4BB

Email: acworthbuilders@aol.com



Tel: 01566 783282
Keith: 07778 471648
Andy: 07867 524515





Gardeners



Enjoy the Winners Circle
For that champion veg
Collect your own FREE
Proper Well Rotted Horse manure

01566 783 515

lydvalefellponies@gmail.com

Free Bags Available!
Trailers welcome!



The Clovelly Inn Bratton Clovelly



Torben, Suzy, Alex & Thomas
look forward to seeing you
01837 871447

Apples Juicing

Have you got too many apples?
We can crush them, press, bottle
& sterilise for Juice

Contact - George Bellamy
Woolacott Farm, Lewdown

01566 783266

TOP SOIL

TOP QUALITY TOP SOIL FOR SALE

SEA SAND

ROAD PLANINGS

VARIOUS DECORATIVE GRAVEL CHIPPINGS & BUILDING AGGREGATES

No VAT

01566 784645 OR 07771 823414

Tim Dixon

Domestic Plumbing & Bathroom Fitting

01566 784028
07903535881

careful & reliable service

timdixonplumbing.co.uk



**Low Trenchard C of E
Primary School**



Monday to Friday
8.45am to 3.15pm
2-5 year olds
Led by Lisa Broadbridge
Early Years Teacher
Please phone for availability
Early Years Foundation Unit with plenty
of safe outdoor space.
We accept Together funding for 2 year
olds and Early Years Education Funding
for 3 year olds.

Respect
Kindness
Responsibility

FLS
Friends of Low Trenchard C of E Primary School
We have an amazing team that
fundraise to enhance our children's
learning journey. Please see our FLS
Facebook page, school website and
local adverts to support our fantastic
school.
Bingo ~ Bake sale ~ summer/winter fair ~ raffles ~
jumble sale ~ sponsored activities/much more!

Wrap around care
Available for 3-11 year olds
£2 per hour (1/2 hour bookings available)
8am to 8.40 am breakfast club £2 per session
3.15pm to 5.15pm (4.15pm Fridays) after school care including snacks.

For more information, contact the school office on
01566 783273
www.lowtrenchard.devon.sch.uk
Email lowtrenchard@andaras.org



MARK CHIVERS - SOLE TRADER

Highly skilled carpenter with over 40 years
experience, including but not limited to:

INTERIOR

KITCHEN • BATHROOMS • BEDROOMS
FLOORING • DOORS • WALLS

EXTERIOR

FASCIA & SOFFIT • GUTTERING & DOWNPIPE
WINDOWS (including sash repairs) • FENCING

FREE ESTIMATES - UNDER NO OBLIGATION

The best price and best service for your budget
Please Do Not Hesitate To Contact Me With Any Enquiries:



CARPENTRY & JOINERY

Mobile: 07804 104812
(8am-7pm)

Home: 01566 783743
(9am-5pm)

Email any time:
m.c.carpentry@outlook.com




*fabric
and
furniture*

Upholstery Service

Collection & Delivery Available

 @fabricandfurniture
 fabricandfurniture
 Linda 07484 093494
 sales@fabricandfurniture.co.uk
www.fabricandfurniture.co.uk

BROADWOOD BOILER SERVICES



QUALITY OIL FIRED APPLIANCE
MAINTENANCE AT
COMPETITIVE PRICES

CALL MARK
☎ 0781 4976 076 OR 01566 784298

MARKSTONE GRANITE

We don't just sell granite.....

- * Slate: Flooring, Worktops, Sills, Hearths, Tables & Benches.
- * Oak Beams, Sleepers, Barrels & Boards (perfect for shelves)
- * Natural Stone Paving & Cobbles.
 - * Porcelain Paving & Flooring.
 - * Reclaimed Bricks
- * Granite Quoins, Cobbles, Lintels, Steps, Plinths, Posts & Troughs




Tel. 01566 784289 Lifton Devon.
www.markstonegranite.co.uk

TAVISTOCK STOVES

& FIREPLACES

Woodburning, Multifuel,
Electric & Gas Stoves.




In our Showroom:

- Live working displays
- Maintenance products – rope, bricks, glass, cement, paint etc
- Fireplace accessories

Our Services Include:

- Free site survey.
- Full installation service.
- Repair & maintenance.



4 Vigo Bridge Road, Tavistock. PL19 0EY
Tel. 01822 487700 sales@tavistoves.co.uk
www.tavistoves.co.uk

S H Joinery

Granite and Quartz worktop cutting and fitting
Cut roofs
Traditional A frames
Kitchen fitting
External bi fold doors
Joinery



Steve Hunt
07974 799062
shjoinery@hotmail.com



Caroline Harris MIAB
Owner & Bookkeeper

Tel: 01566 783 502
Mob: 07866 953 708
cmhbookkeeping@btinternet.com
www.cmhbookkeeping.co.uk

- + Bookkeeping
- + Self Assessments
- + Accounts Preparation
- + VAT Returns

Premier Pet Care

I am a dog walker and pet carer with 25 years experience based in Lewdown.


I offer individual and small group dog walks and holiday cat visits, so they can stay in the comfort of their own home whilst you are away. I am a qualified veterinary nurse, fully insured and can provide references on request.



Judith James

07527062889

premierpetcare@btconnect.com

 Find me on Facebook: **Premier Pet Care**

K. Moore & Son. PLANT HIRE

**Specialising in all sitework,
drives, sand schools, septic tanks
hedging and all types of farmwork.**

Royal Oak, Newton Down, Lifton

Tel:- 01566 784722

07785 540494



07734 956925
8- Seater Vehicle Available

Anytime - Anyplace - Anywhere

AIRPORT • TRAIN STATION
SHOPPING • DOCTOR

Prompt Reliable Honest
FAMILY RUN COMPANY
24/7 365 days

Chair Yoga for Seniors

with Yogajeanie

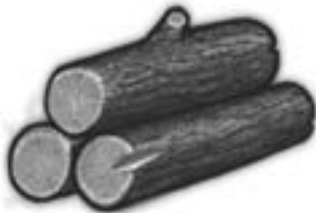
Chair yoga helps with
Muscle toning
Reduced stress levels
better breathing habits
better sleep
overall sense of well-being
It's fun too!

Interested?
Just come along in comfy clothing

At Lewdown Village Hall
Thursday's
from 10:00 am -11:00 am
£7 per class

For more information contact
jeanharris50@hotmail.com
Mobile 07929 278788

LOGS



SEASONED
HARD WOOD,
SPLIT TO YOUR
REQUIREMENTS.

DELIVERED
LOCALLY

07942 073204
the2relics@gmail.com

PLUMBER

EST 40 Years

Lewdown
& District

Tel: 01566 783562

Mobile: 07731878510

Carols Round the Tree

Lewdown Victory Hall

Friday

December 19th

Starting 7pm ish

Singing, Games &
Snowman Drive



The Chillaton Players Present

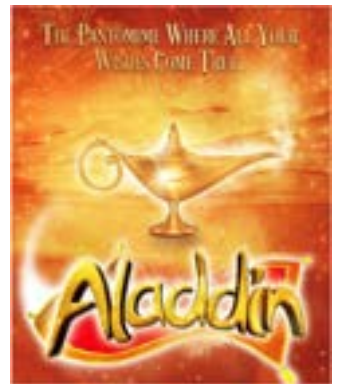
Aladdin

A Christmas extravaganza

Saturday December 13

from 5pm

St Mary's Church Marystow



The evening will start with Christmas carols to get us in the mood.

£5 for adults, children can come in free

Proceeds are shared between the children's society, the church
and Virgin Arms

Afterwards you are invited to the Chillaton Village Christmas Craft Fair
and winter Barbeque.

Advanced Tickets Sales contact james.hitchcock55@gmail.com or call 07718 494266