

**The Area Magazine for Lewdown, Stowford, Thrushelton,
Lewtrenchard, Chillaton, Coryton & Marystow**

September 2025

community newslink

for all that's going on in your area...

50p
donation



Published by the Lewdown Residents Association

Registered Charity Number: 1071808

Funded by the Subscribers, Advertisers, Sponsors & Area Churches

**Fire/Police/Ambulance
Emergency 999**

All other contact with Police 101

Police Contact/Crime Prevention
PCSO Seonlad Greenwood 101

Neighbourhood & Farm Watch

Horse Watch Gina 01837 840716
Floodline 0345 988 1188

Parish Clerks

Lewdown Grouped
Peter van Delft 01566 783023
lewdowngpc.clerk@gmail.com
www.lewdowngroupedpc.org.uk

Milton Abbot Grouped
Jane Savage
clerk.magpc@outlook.com
www.magpc.co.uk

Stowford
Peter van Delft 01566 783023
stowfordclerk@gmail.com
www.stowfordparishcouncil.org.uk

West Devon MP

Geoffrey Cox 01822 612925

County Councillor

James Grainger
james.grainger@devon.gov.uk

Borough Councillors

Milton Ford Ward
Neil Jory 01822 860342
Bridestowe Ward
Terry Southcott 01566 783079
Caroline Mott 01837 861212
Tamarside Ward
Chris Edmonds 01566 784794

Schools

Lewtrenchard 01566 783273
Lifton 01566 784288
Milton Abbott 01822 870273

Colleges

Tavistock 01822 614231
Okehampton 01837 650910
Launceston 01566 772468

Ring & Ride

Okehampton Area 01837 55000
Tavistock Area 01822 618028

Community Groups

Cricket Club 07847111330
Chillaton Football Club 01822 860476
Lamerton Pony Club 01822 860350
Lewdown Past 01566 783396
Lewdown Residents Assoc. 01566 783320
Lewtrenchard WI 01566 783765
Lifton Benefice Churches
Revd Philip Conway 01566 784462
liftonpriest@yahoo.com
Lifton Surgery 01566 784788
01566 784111
Red Spider Company 01409 221376
Recreation Field 01566 783367
Stowford Hall 01566 783223
Victory Hall 01566 783267
Youth Cricket 07847111330
Young Farmers 07443 461344

Advice Helplines

Citizen's Advice Bureau 08444 111444
West Devon Women's Aid 01837 55228
Age Concern 01752 665424
Health Information Line 0800 665544
Homelessness Trust 01822 615259
Parentline 0800 8002222
Relate 01392 275681
Samaritans 08457 909090
Tavistock Area Support Svcs. 01822 616958
Age UK 01822 616958
Transport to Health 01822 617525
Victim Support 01822 820455
Youthwise Okehampton 01837 54004

Shop & Post Office

Copper's PO & Stores 01566 783218
Lifton PO & Stores 01566 784211

Front Cover Picture

Description

*South Devon 'Cruft Sapphire' with Calf
competing at Launceston Show.*

Photo: Becky

newslink archive

www.rawrationsplus.co.uk/lraarchive.html

For us to be able to print and distribute the community newslink it costs approximately £500 a month.

Please make an annual donation of £5+ for yours to:

Account name: **Lewdown Residents Assoc.**

Sort code: **090154**

Account number: **97666081**

Thank you for your support

community newslink

Produced by Lewdown Residents Association

A magazine providing news, information & items of interest for the areas of Lewdown, Stowford, Thrushelton, Lewtrenchard, Chillaton, Coryton & Marystowe

Established January 1999
Issue No. 293 September 2025

Editor: Simon Hedger

St. Anthony's, Stowford, Lewdown, Okehampton EX20 4BY

Telephone: 01566 783765 Email: newslink@hedger.biz

Production, Distribution and Delivery Helpers:

Tim & Sarah Nash, Simon & Monique Hedger, Terry Southcott, Andy McCarthy, Ruth Dawe, Audrey Jones, Tom Andrews, Mike Bickell, Esther Van Delft, Rita Squires, Bob Holland, Julie Chick, Coppers Stores, Keith Abayomi-Turner

All news, photographs, reports, events, etcetera for NewsLink need to be sent to the Editor by the 15th of the preceding month.

We welcome your articles / items / advertisements. Though we do our best, we cannot guarantee to publish all that is sent to us.

B&W advertising in newslink is free for Charity events in our local areas.

Adverts for events outside of the area and for businesses are priced as follows:

	Black & White	Colour
1/4 page	£4/month or £40/year	£6/month or £60/year
1/2 page	£8/month or £80/year	£12/month or £120/year
Whole page	£12/month or £120/year	£16/month or £160/year

Please note that advertising prices are subject to VAT at 20%

Good evening to you all, and it is a good evening indeed.

It's been a nice warm sunny day the garden is in maximum production, with runner beans, potatoes and beetroot to name a few things being harvested, and a combine harvester is in the field outside our kitchen window cutting the barley. I realise that we have just about had enough rain to keep crops growing, and if you go only to Exeter everything is burnt off. On the upside, the in-laws have not had to cut their lawn for over 6 weeks now.

It was good to read in the last edition of the link that Graham Perkins, and Peter Earle had been punished for fighting with their books in Lewtrenchard school. I only mentioned this because they were in the year above me throughout primary school.

I would also like to point out that your esteemed chairperson was an angelic, model pupil (or possibly not). I did excel in collecting scabs on my knees and elbows, as i only wore shorts until I turned 8 or 9. On the plus side we did get a third of a pint of milk a day, which sounds great until you remember in winter it was generally frozen in the bottle, and the blue tits had, had a go at removing the tops, and in summer it had been in the sun for many hours and had started to separate, happy days. I wonder If I could get a school leavers sweat shirt with 1974 on it.

Will close now as my bath awaits. Best wishes to you all, and good luck if you are entering in the produce show.

Regards, Tim Nash.

Ps. The local vicar walks past a old man working in his garden, after looking for a couple of minutes, he says to the gardener, "what a wonderful garden you have made with the good lord's assistance". After a few moments the gardener looks at the vicar and says, "that's very kind of you to say so, but you should have seem it when the lord had it to himself".

Will close now with this interesting bit of information:

Man set foot on the moon before he put wheels on his luggage. Strange world isn't it.

Soupa Troopers

All welcome to this community event



Wednesday September 10th

From 12.30pm in Lewdown Victory Hall

Soup and a Bread Roll, Tea or Coffee - £4

Followed by conversation & games

Premier Pet Care

I am a dog walker and pet carer with 25 years experience based in Lewdown.

I offer individual and small group dog walks and holiday cat visits, so they can stay in the comfort of their own home whilst you are away. I am a qualified veterinary nurse, fully insured and can provide references on request.



Judith James

07527062889

premierpetcare@btconnect.com



Find me on Facebook: Premier Pet Care

From the Editor

Please join us for the **AGM** of the **Lewdown Residents Association** on **September 1**, 2025 from 7.30pm in Lewdown Victory Hall. Come and have your say about the Flower and Produce Show, newslink, etc.

One reader reported that last months English Garden Cocktail taken with Greek Salad was "delicious and highly recommended" 😊

Ed.

They say smoking is dangerous...

A long time ago there was a girl, who was getting ready for a night out.

Preparations started in the afternoon with a leisurely bath and the Carmen electric curlers were set on volcano heat level.

Hair was washed, and the old-fashioned blue setting lotion applied, which would set the hair rock hard. It's probably been banned now for too many nasty chemicals.

Curlers were applied to the girl's long hair and then disaster!! She lit a cigarette, and unbeknown to her, a wisp of hair had fallen in front of her face.

Her hair sizzled with smoke like a firework and travelled upwards. In panic she ran towards her mother, who had just told her off for smoking in the house! In a split second her mother stopped her and smashed her hand into the hard curler and extinguished the fire. The smell of burnt hair and skin was dreadful.

The girl had no serious injuries, but lost her fringe, which was now burnt on to her forehead. The remainder of her hair remained intact, and the poor mother only sustained a minor injury to her hand, which had made contact with the hard heated curler.

Needless to say, this didn't put the girl off going out for the evening, and she donned a very jaunty head scarf to cover her burnt forehead.

Moral of this story, smoking is dangerous when you are near flammable lotions!

Kym

Lewdown Past

The Lewdown and area local history group

Many of you will know that Lewdown Past, like many local history groups, has been unable to continue, due to a number of factors. However, we can look back on 20 successful years of talks and visits, many of particularly local interest. On 3 November 2004 an informal group of 17 local people met and soon found that there was far more interest and knowledge to be shared about our area. A full programme was arranged for 2005 including: the 1881 Census in Lewdown; St Peter's Bench Ends; Manganese Mining; St Hubert's Hall; Our Scarlet Fever Outbreak; all given by our own members. Talks at Broadley Chapel and then at Stowford Village Hall and many local visits followed.

In 2024 the Group still had modest funds, and on its dissolution it fell to the Committee to decide how to use this for 'charitable purposes for the benefits of the inhabitants of the Lewdown area'. One theme stood out: In 2006 we had a talk on The Holy Wells of Devon by Terry Faull which sparked the question: where was the holy well at Lewtrenchard?

Following this, a group of local people, many being Lewdown Past members, decided to take up this challenge and The Friends of the Forgotten Garden of Lewtrenchard was born and has thrived, managing a tranquil area which can be enjoyed by all and where there are a number of memorials to past members as well as the restored Holy Well.

May the spirit of Lewdown Past live on in this garden.

Hilary Whitelock



A visit to Dingles fairground in 2008: before we sampled the dodgems and merry-go-round

Coombe Trenchard Open Gardens July 6th

Thank you to everyone who supported the Open Gardens at Coombe Trenchard in July.

A special thank you to the Packhorse Players, who wrote and performed a comical sketch about 'The Great Cream Tea' debate. Thank you also to everyone who donated plants and helped serve teas.

It was a very successful day raising £1,703 from ticket entry for St Peter's Lewtrenchard. An amazing £2,585 was raised for the Devon Freewheelers Blood Bikes through sales of teas, plants and raffle. A grand total of £4,287 raised in one day.

Sarah Marsh, Coombe Trenchard: www.coombetrenchard.co.uk



As we approach the end of the season we would like to thank all our sponsors and supporters. Without you we would struggle to keep providing sporting options at the heart of our village community. There is still time to buy a 50/50 ticket!! (see below)

RESULTS:

19th July : Lewdown 1st XI 138/6. South Devon 2nd 166/9. **WON** Ollie Jordan 5 wickets for 30 runs.

19th July : Ipplepen 4th 55/2. Lewdown 2nd

XI 145/AO. **LOST**

26th July : Brixham 2nd 177/AO. Lewdown 1st XI 179/8. **WON** Keith Maynard 59, Tim Shaw 51 ably assisted to win the game by Jack shaw who faced 25 balls for 0 runs.

2nd August : Bovey Tracey 3rd XI 168/8. Lewdown 1st XI 171/6. **WON.**

2ND August : Lewdown 2nd XI 174/5. Stoke Gabriel 3rd 219/2. **LOST** Ollie Hann 50

9th August: Lewdown 1st XI 188/6. Kingsbridge 2nd 186/3. **WON** Keith Maynard 98

9th August : Buckfastleigh 1st XI 102/5. Lewdown 2nd XI 101/AO. **LOST** Rijesh Benans 3 wickets for 36 runs

HOME FIXTURES: (1.00pm start)

Saturday 16th August 2nd XI vs Yelverton Bohemians

Saturday 23rd August 2nd XI vs Abbottskerwell

Saturday 30th August 1st XI vs Babbacombe

50/50 Draw: Tickets are £5 each. 50% of the money goes in to the prize fund and the other 50% goes towards running the club and investing in facilities and equipment. Tickets will be available at the club and at the Blue Lion. Equally, If you think you can sell some books of 5 tickets please contact us on the numbers below.

Club Contact:

Geraint Williams 07850 786310

Junior Cricket Coordinator:

Mike Maynard 07974 756136



Gardening Jobs For September

The village shows are now out of the way, but there is still plenty to do in the garden, here are a few jobs for this month..

Sow winter crops

There are a number of salad crops which can be sown now to grow through the coming months and into next year. Things like spinach and rocket do much better sown now, to grow through winter, than they do from spring sowings.

These crops will then provide you with small harvests throughout the winter, if you have a greenhouse or polytunnel then so much the better, as the small plants can go in after you have finished harvesting things like tomatoes to keep your beds full over winter.



Come the end of the month and into the start of October, you can make sowings of sweet peas to overwinter small plants ready to plant out in the spring – if you can help your plants through the winter you should find they flower earlier.

Broad beans can be sown well into November, but most other vegetables will struggle to germinate as we go into the autumn/winter due to a lack of light & warmth.

Plan ahead

Autumn is a great time to make changes in the garden, whether it's re-planting a flower bed, moving a path, re-placing an old shed or making yourself a soft fruit area. Before you start any big jobs like this, you want to make sure you have planned ahead and know exactly where you want things to go and how you want them to look.

If you don't plan ahead, next spring will be here before you know it and you'll realise the path leads nowhere and the new shed shades the currant bushes far too much.

Save seeds

This time last year, I talked about saving your own seeds from french & runner beans at this time of year, to give you the seed for next year. Well the same thing applies to lots of flowers you might be growing, including Dahlias, French Marigolds and Sunflowers.

Rather than dead heading all of the spent flowers, leave some on the plant to form seed heads. If the weather allows, you want to leave the seed heads on the plant to dry out completely, before bringing them inside and drying on a tray for a further week or so on a sunny windowsill. You can then put the seeds in a labelled envelope ready to sow next spring.

A word of warning, home saved dahlia seeds won't be true to type, but for me that makes it all the more worthwhile because who knows what brilliant colours you'll get next year!



May the weather be with you!

Liam

No Churn Ice Cream:

Summer is here and so is Homemade Ice Cream

You will need:

200g condensed milk

300ml double cream

Add flavours of your choice, such as: cookies, choc chips, fruit, vanilla, mint

Method:

Whisk milk & cream until peaks form. Add flavours. Freeze. Eat! 😊



From Lewtrenchard WI Past & Present Favourite Recipes

Lewdown Grouped Parish Council

Coryton, Lewtrenchard, Marystow and Thrushelton

Councillor Vacancies

Would you like to become a councillor representing the parish
of Coryton or Marystow?

Would you like to help shape the future of the area where you live.

If so, why not come along and see what is involved in being a parish
councillor, your contribution will make a difference.

Contact the clerk for more details:

Parish Clerk: Peter van Delft, Tel: 01566 783023 Email: clerk@lewdowngroupedpc.org.uk
www.lewdowngroupedpc.org.uk



STOWFORD COMMUNITY COFFEE MORNING

Come and meet your neighbours for a coffee, cake and catch up!

We meet on the first Tuesday of every month at Stowford Parish Hall.
10am - 12noon. All friends and family welcome.

£3 per person (cash only) which includes a hot drink and homemade cake.

All profits are donated to a charity chosen by villagers.
If you need help with transport, please contact Tracy on 07973 327161



Fiction of the Month: The Artist by Lucy Steeds

Provence, 1920.

Ettie moves through the remote farmhouse, silently creating the conditions that make her uncle's artistic genius possible. Joseph, an aspiring journalist, has been invited to the house. He believes he'll make his name by interviewing the reclusive painter, the great Edouard Tartuffe.

But everyone has their secrets. And, under the cover of darkness, Ettie has spent years cultivating hers.

Over this sweltering summer, everyone's true colours will be revealed. Because Ettie is ready to be seen. Even if it means setting her world on fire.

An intoxicating tale of art, love and secrets set across a sun-drenched Provençal summer in 1920, Steeds' masterly debut revolves around a fabled, reclusive painter, an aspiring British journalist set on penning a piece on him, and the artist's seemingly unworldly niece Ettie who harbours an explosive secret.

Blending mystery and slow-burning romance with lush, cinematic prose and exquisite characterisation, *The Artist* is an absorbing study in monstrous egos, self-discovery and the power of art, filled with dextrous detail for the senses...

Publisher: John Murray Press
ISBN: 9781399832663



From the Mountains of Japan

No.15 - Dam Hopping on the Takase Gorge

July in Japan this year was a relentless succession of baking hot days, the temperature rarely below 35C even in our little mountain town. So of course, in early August, I decided to go hiking, and managed to pick the only day of the entire summer to experience torrential rain.

At 5.30am I found myself sitting outside a convenience store in Omachi, a gateway town to the Japan Alps. The mountains usually towering over me were hidden behind a curtain of relentless, thundering rain. It was obvious I needed to abort mission, but not wanting to admit defeat and head straight back to Nagano, I decided to do a little driving around.

Picking a random road heading up into the mountains, I found myself in Takase Gorge, famous for three huge dams. I turned a sharp hairpin corner and found myself facing an almighty heap of rocks looming over the road.

This was Nanakura Dam, the middle of the three, and a famous rock-fill dam. I decided to hike to the top, thankfully up a concrete stairwell alongside the 125m high pile of rocks, to where I was met with stunning views of an emerald green lake, the surrounding mountains partly shrouded in mist.

The dam was built in 1978. One thing that Japan has in abundance is water, and the dams that you see on practically every river are as much for flood management as for hydro-electric power. On the day that I visited, the water level was pretty low due to the weeks of scare rainfall, but a mile up the hill, near the entrance to a restricted-access tunnel that leads to the larger Takase Dam, the river was a raging torrent.

Takase Dam, the upper of the three dams on the gorge, is the largest rockfall dam in Japan at 175m, and the second largest dam overall, after the nearby Kurobe Dam, which is hidden in the mountains and only accessed via a special bus. I wanted to visit Takase Dam, but to get to it you had to walk down a long road tunnel, and in the heavy rain and the mist, it looked straight out of a horror film. I was too scared, so headed for a nearby museum instead. Maybe next time...!



Chris Ward

Cocktail of the Month 'Death in the Afternoon'

This potent combination of absinthe and Champagne was created by Ernest Hemingway and shares a name with his 1932 book about Spanish bullfighting. Trust an author renowned as much for his drinking as for his writing to come up with such a sophisticated mixture...

...Hemingway says: "Pour one jigger absinthe into a Champagne glass. Add iced Champagne until it attains the proper opalescent milkiness."

YOU WILL NEED:

- 1 White Sugar Cube
- 10ml Absinthe
- 140ml Champagne
- Garnish - None Required

METHOD:

Place the sugar cube in a Champagne glass, pour over with absinthe, top slowly with the Champagne. Drink three to five of these slowly.



Stowford Parish Council



Abbreviated minutes of Extraordinary meeting held on 29th July 2025

These minutes are provisional until they are signed by the chair at the next meeting of the parish council.
Meeting No 736

Present: Cllrs Leroy St Louis (Chair), Law (Vice chair), Alexander, Chick, Lorna St Louis, Terry. Cllr Chris Edmonds (WDBC), Peter van Delft (clerk). Meeting opened 7.30pm

1. Minutes of previous meeting 735 to be signed as a true and accurate record of that meeting, proposed by Cllr Alexander, seconded Cllr Lorna St Louis, all in favour.
2. Planning app. 0934/25/HHO - Householders application for conversion of garage to ancillary accommodation. Maitland Cottage, Road to Lowertown, Sprytown, PL16 0AY
Council decision - support - Proposed Cllr Alexander, seconded Cllr Law, all in favour
3. Planning app. 1947/25/LBC - Listed building consent for conversion of garage to ancillary accommodation. Maitland Cottage, Road to Lowertown, Sprytown, PL16 0AY
Council decision - support - Proposed Cllr Alexander, seconded Cllr Chick, all in favour

Date time & place of next meeting: 2nd September 2025 - 7.30pm at Stowford Parish Hall

Lewdown Grouped Parish Council

Coryton, Lewtrenchard, Marystowe and Thrushelton

Abbreviated Minute No 790 of Extraordinary Meeting

Held on Monday 14th July 2025 at Lewdown Victory Hall

These minutes are provisional until they signed by the chair at the next meeting of the parish council

Present: Cllrs Yeo (Chair), Alexander, Andrews, McSmythurs, Metherell, Perkins, Southcott, P van Delft (clerk).

1. Apologies for absence: Cllrs Mincher, Wilkinson and Cllr Mott (WDBC)
2. Members of the public open forum - one member present. The member wished to acknowledge that he welcomed and supports the council's initiative for a community play area.
3. Declarations of Interest - Cllr Alexander item 4.3
4. Play area updates
 - 4.1 Draft lease agreement review and approval - The first draft lease agreement was screened for all councillors to view. Cllr McSmythurs proceeded to identify the clauses that needed some amendment, clarification or inclusion of a clause. After scrutiny of the draft agreement Cllr Andrews proposed to accept in principle the draft agreement that is subject to consideration of the councils recommendations, seconded Cllr Southcott, motion was approved by all.
 - 4.2 Planning application - It was resolved that the planning application for the "Ramps" playground could now with some minor amendments be completed and made ready for submission, proposed by Cllr Southcott, seconded Cllr Metherell, approved by all. Payment for the application to be approved at the next meeting. Cllr Yeo informed that from advice received from a local parish council, that their wooden play equipment needed to be recently repaired at a cost of £3,500 and that the equipment was only 10 years old, average running costs for their playground was approximately £250.00 pa. It was suggested that wooden, steel and composite materials should be carefully considered for longevity of use.
 - 4.3 Section 106 application - Discussion took place regarding timing of the S106 drawdown for each of the S106 agreements. Cllr McSmythurs suggested that the "Crossroads" agreement could be drawn down at any time. Cllr Alexander informed that the "Old Coach Inn" agreement would most likely not be available for draw down until 2026 onwards due to delays with planning, construction and sale of plots. It was resolved to draw down at the earliest opportunity proposed by Cllr Andrews, seconded Cllr Perkins, all in favour.

Lewdown Grouped Parish Council
Coryton, Lewtrenchard, Marystowe and Thrushelton
Abbreviated Minute No 791 of Ordinary Meeting
Held on Monday 28th July 2025 at Lewdown Victory Hall

These minutes are provisional until they signed by the chair at the next meeting of the parish council

Present: Cllrs Yeo (Chair), Alexander, Andrews, Metherell, Mincher (vice chair), Perkins, Southcott, Wilkinson, Cllr Mott (WDBC), P. van Delft (clerk). Meeting opened 7.30pm

1. Declarations of Interest - Cllr Southcott Item 6 planning ref 1751/25/FUL
2. Minutes of previous meeting 789 being a true reflection of that meeting was approved and signed by the chair, proposed Cllr Andrews, seconded Cllr Metherell, motion carried.
3. Cllr Mott (WDBC) provided an update on the current proposed changes to local government reorganisation, she informed that she had QR cards that provided a link to the WDBC website and the Local reorganisation questionnaire, also details of proposals for the 3 new unitary authorities, final proposals to be submitted by 28th November. Cllr Mott also provides regular updates on Dartmoor National Park that maybe of general interest.
4. Planning app. 1751/25/FUL-Retrospective sheds/outbuilding within domestic curtilage, 6 Woods Field Lewdown, EX204FB Council decision - Support - Proposed Cllr Mincher, seconded Cllr Wilkinson, motion carried
Planning app. 0813/25/HHO-Householder application for proposed studio on the drive, Hillside, Warracott, Chillaton, PL16 0HE. Council decision - No comment - Proposed Cllr Mincher, seconded Cllr Perkins, motion carried.
5. Finance - 5.1 Payments were authorised for the following; P van Delft - Clerk salary (June - July) £549.80, HMRC-Paye £130.78, Cllr Wilkinson - Refund for equipment purchased £15.98, Motion proposed Cllr Alexander, seconded Cllr Mincher, carried. 5.2 R.F.O. reported a credit balance after payments of £22,855.72, proposed Cllr Alexander, seconded Cllr Southcott, motion carried
6. New Councillors - vacant seats for Coryton and Marystow - No applications received, advert to go in the Newslink and the local facebook pages. Clerk action.
7. Cllr Reports - Cllr Alexander had received several complaints regarding parking on a dangerous bend on the main highway through Chillaton village from Lewdown to Tavistock. Clerk to write again to Milton Abbot grouped parish council. - Clerk action + express concern to D.C.C. Cllr Mincher reported that the developer at Schoolhayes had filled in the ditch and was now levelled off, it appeared that the situation is now worse than previous. Cllr Mott confirmed that remedial work on the site had to be completed by the end of summer 2025. Cllr Wilkinson reported that Lewtrenchard Manor Hotel was now open. All the trees on the Lewtrenchard Manor estate were now covered by a TPO order.
8. Play area updates
 - 8.1 Draft lease agreement - review of second draft. Cllr Southcott projected all the items of concern raised by Cllr McSmythurs, after full deliberation of each item, it was resolved to ask Cllr McSmythurs to report back to Ashfords Solicitors requesting them to review the items raised, proposed Cllr Andrews, seconded Cllr Perkins, motion carried. The clerk reminded councillors that official legal advice would still be advisable once all the draft detail had been agreed. Clerk to enquire from DALC suitable solicitors
 - 8.2 Planning application - Cllr Southcott informed that the planning application would need to be submitted using the Development Management email account and not to use the WDBC porthole.
 - 8.3 Review of the play equipment quotes - Cllr Perkins to obtain fresh quotes. Cllr Perkins also informed of a need to identify risks in consideration of Health and Safety, in particular the adjacent cricket pitch when it is in use. Some safety equipment may need to be purchased. See item 12 for a request for a member of the L.R.F.C. to be a party to the design of safety measures. It was resolved that this request would be beneficial to both parties.
 - 8.4 Provisional timing schedule for the scheme. Some discussion took place suggesting that the scheme may need to be completed in two stages, it is currently dependant of receipt S106 money, and existing parish council funds. Cllr Perkins informed that should the project take place in two stages then this might affect potential Lottery funding.
 - 8.5 Section 106 - update. Clerk to enquire from WDBC the timescale and the drawdown process.
9. Highways - Cllr Yeo informed that the Bratton road was now open again after having much needed repairs.
10. Correspondence - Soupa Troopers - grant request. It was resolved that the Soupa Troopers group should apply using the parish councils grant process, it also advised to apply using the WDBC grant process.

A letter was received from the Lewdown Recreation Field Committee requesting that a member of that committee is involved in the design of any proposed safety measures.

Date, place and time of next meeting - Monday 18th August at Lewdown Victory Hall, 7.30pm

Reflections of a Steam Engine Fireman

Early in 1965 I moved from the old mans gang into the links. One of the turns was a passenger train on the Reading Redhill line, we worked to Reading from Guildford stopping all station to Reading station (southern), uncoupled the loco from the train and turned the engine in the loco (southern) and returned to Redhill.

At Redhill uncouple the loco from the train, then into the loco and turned the Engine and returned to Guildford. It was the fireman's duty to couple/uncouple the loco each time, vacuum pipes were easy to fit together but steam heater pipes could be awkward, especially in the confined space between loco and carriage.

The engine was normally a U or N class loco but as they started to be withdrawn, standard class 2-6-0 tender engine or a 4-6-0 standard tender engine were used.

Now John, my regular driver, if he was not on foreman duty and I prepared the engine did all his work oiling round etc he would let me drive the passenger train every other day from Reading to Guildford stop at all station I would shovel some coal round and john would keep an eye on me and the track ahead when I shovel some coal in the firebox..

He would maintain the water in the boiler, it was hard work but what eighteen year old would refuse to these condition when I could drive a steam engine on a passenger train and braking at station and observing speed and signal, etc.

John would offer tips etc stopping and starting a steam engine with passengers with no jerks and sudden braking and release the brakes before you come to a stand, holding on to the brakes will make the passengers fall over if they are standing.

If we had a footplate inspector with us he would ask John if he had let me drive the engine and if not why not, it was all part of bringing you on to be a driver.

John's father was the signalman at Guildford north and if we were shunting in the yard we would take tea in the box, I was allowed to work the box, his dad would tell me what code to ring and what levers to pull. The booking boy would fill in the register, now from the up yard to down siding was a fourteen lever move all had to done in the right order or you had to start again, I managed it on the second go.

Later that year a new panel box was put in, all electric and he showed me that instead of pulling levers it was two buttons and it would automatically set the road.

A fireman had to know how a signal box worked to safely carry out rule 55: to protect your engine or train in case of an incident on the tracks.

Tom



Farming Report

Another month, and not much rain since the last time I wrote. We haven't burnt up yet but the fields the cattle are in are looking fairly dry and the fields we would like to turn them into there's not much grass although it's looking fairly green considering. I know we shouldn't complain about the lovely weather, but a few days of rain wouldn't hurt now!

We've been busy showing with the south Devon's taking a cow and calf & stock bull to Woolsey, Launceston, Honiton & Holsworthy. At the time of writing we have so far done pretty well with reserve champion with Trumper the bull & Interbreed beef pairs champion at Woolsey, and done well at Launceston & Honiton show. Our next and final summer show of the season is Holsworthy show.

Becky Dennis



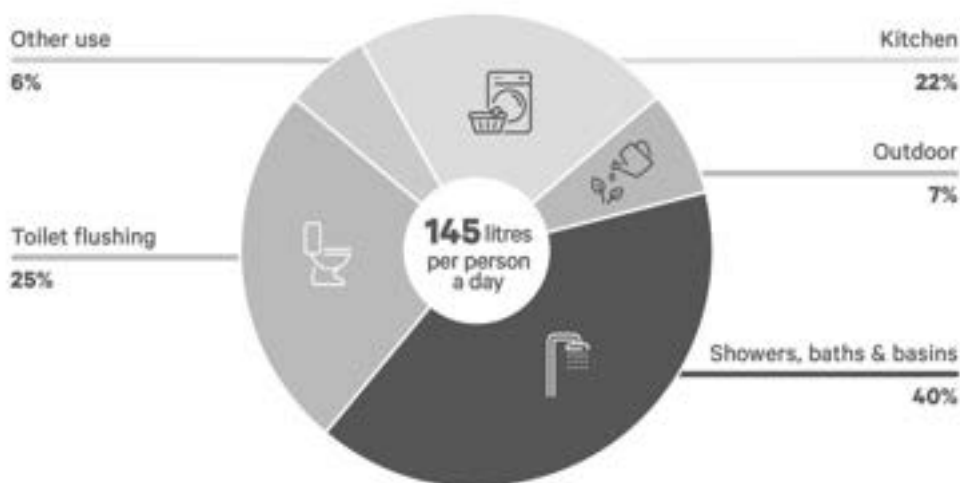
Young Farmers: August has been a bit of a quieter month with the good harvesting weather and shows upon us now. Looking back to the Tarka rally at the end of July the club had a successful day with plenty of entries from members gaining prize cards. Overall the club came 3rd out of the 6 clubs and individually Becky Dennis achieved 4th over 18 girls. Members had a tour of Gooseford dairy near Whiddon Down as well as learning about their enterprise and milkshake business. We have our charity bath push on Saturday 13th September along the Granite Way and our annual Dinner and Dance to round off the YFC year on Saturday 27th September at Okehampton Rugby Club, if you would like to book tickets for D&D then please contact Ellen on 07864 915451. By the time you read this report, Club chair Becky will have been on the Devon YFC Senior Travel Scholarship to Spain, whilst over there for the weekend she will be travelling to various sheep, goat & dairy farms and exploring the various rural communities. More to come in the next newsletter!



Current Reservoir Levels

Week ending: 3 August 2025

Reservoir	Current level (%)	Current storage (MI)	Net capacity (MI)
Stithians	69	3,419	4,967
Drift	71	857	1,200
Argal	68	890	1,302
College	91	224	246
Crowdy	81	831	1,022
Colliford	60	17,004	28,540
Siblyback	56	1,776	3,182
Upper Tamar	86	1,266	1,477
Roadford	77	26,605	34,500
Burrator	47	1,992	4,210
Wistlandpound	50	777	1,550
Meldon	72	2,169	3,020
Wimbleball	54	11,541	21,320
Fernworthy	86	1,522	1,765
Kennick, Tottiford & Trenchford	57	1,147	2,011
Avon	74	966	1,313
Venford	72	534	740



Where do you use water?

The average person uses 145 litres of water a day.

Most of it goes on showers, baths and sinks (40%), then toilet flushing (25%) and kitchen use (22%). The rest is used outside (7%) or for other things such as swimming/paddling pools, leaky taps and loos (6%).

Stowford Parish Hall



Stowford Supper

£15 a head

7pm Friday 17th October

Meal choices

Cottage Pie

Jacket potato, Baked beans

Cheese and Salad Veg

Chicken Curry

Home made Desserts Tea, coffee and Mints

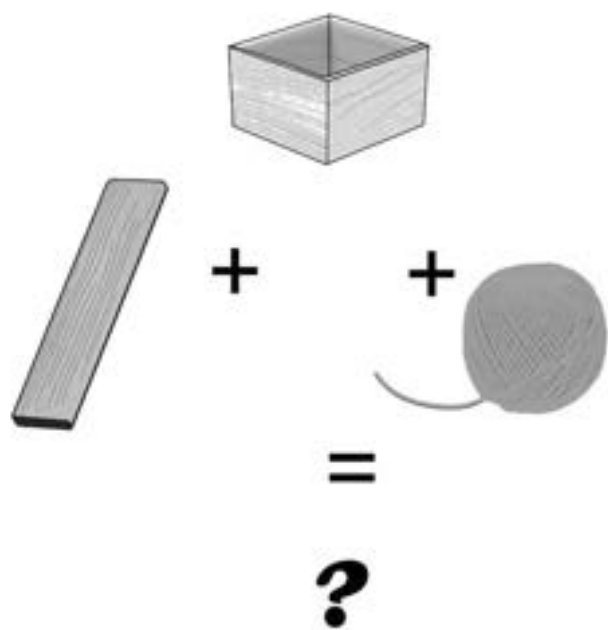
BYO Bottle

Tickets: Charles Chick - 01566 783223 | Sharon Adams - 01566 783030

Ester Van Delft - 01566783023

Puzzle Page

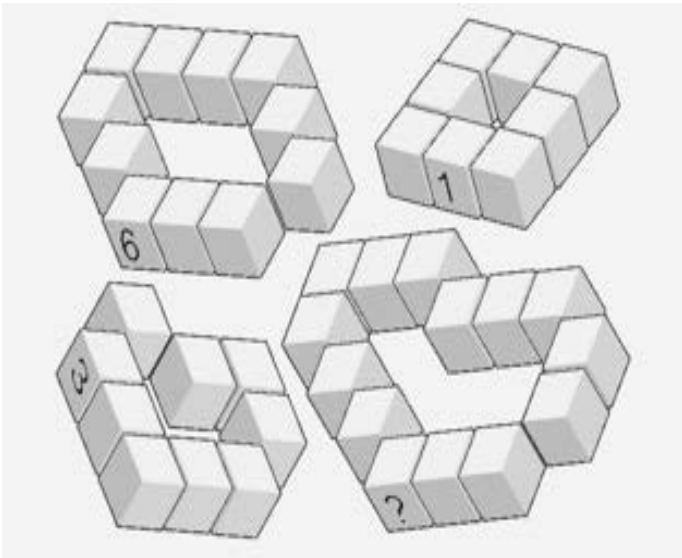
Visual puzzle: Guess the item?



Q: What is it that no one wants to have, but no one wants to lose either?

Number blocks:

What number should replace the question mark on the bottom right loop?



What is the answer to this math problem: $x^3+y^3+z^3=k$?

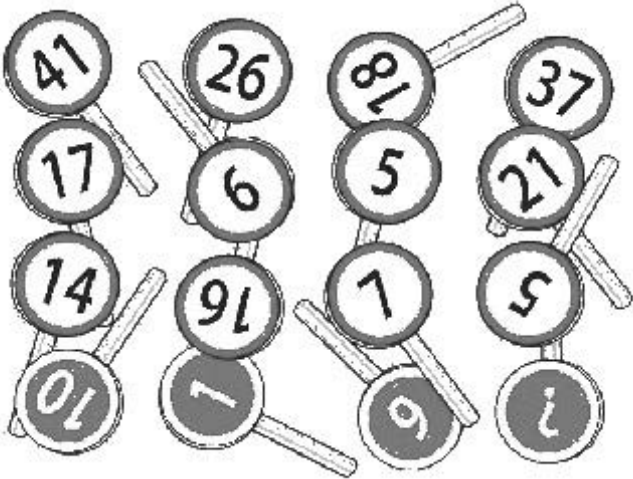
What is the real answer to: $6 \div 2 (1+2)$?

September's Evil Sudoku

	7	1			5			
5		3			9			
			2	1		6		
9					7		2	
		8				7		
	4		8					6
		2		3	1			
			9			1		8
			7			3	4	

It's a sign:

What number should go on the bottom right sign?



August Answers

Which direction is the bus moving in:

To the right because the bus is from the UK; they drive left and have their door on the left side.

Typical IQ test puzzle with clocks:

A

Another IQ test puzzle, now with umbrellas:

C

How many cubes can you count:

17

Morse code visual riddle:

WITCH

Evil Sudoku

6	7	1	2	5	9	8	4	3
2	5	3	7	4	8	1	6	9
4	9	8	3	1	6	2	7	5
9	3	6	4	2	5	7	8	1
5	1	4	8	7	3	9	2	6
8	2	7	6	9	1	3	5	4
7	8	5	1	3	4	6	9	2
3	6	9	5	8	2	4	1	7
1	4	2	9	6	7	5	3	8

Lewtrenchard WI August Report



About 60 people, including many of our members, plus neighbouring WI's came along to support our afternoon tea event on this very hot August day.

We set up the hall in record time and it looked really pretty, in particular the bunting around the table put up by Lottie, granddaughter of one of our members.

The hall, tables, teapot flowers, Marion and Joyce's flowers and of course the food were outstanding,

we had some great raffle prizes, thank you so much to those who provided them.

It was deemed a huge success by all who came along.

Our treasurer Lynn confirms that we raised £348.50 for The League of Friends of Tavistock Hospital and £175 for our Centenary Fund.

Date & venue for next meeting: Monday September 8, 19:30, Lewdown Victory Hall
Ann Mercer: Yaks & Monasteries in the Himalayas

Dates for your diary:

21st September Thursday Coffee morning - Alder Vineyard

25th September Monday Walk, contact Mary E/Lynn



The North Tamar Mission Community



St. Mary the Virgin,
Kelly with Bradstone

St. Mary the Virgin,
Lifton

St. Nicolas,
Broadwoodwidge

St. John the Baptist,
Stowford

St. George,
Thrushelton

St. Peter,
Lewtrenchard

Ministers

Lifton, Broadwoodwidge, Stowford, Lewtrenchard, Thrushelton & Kelly with Bradstone United Benefice

The Revd. Philip Conway, 01566 784462 liftonpriest@yahoo.com
The Rectory, Parsonage Court, Lifton PL16 0BJ

Milton Abbot Benefice

The Revd. Gill George, 07947 604160 vicar@southtamar.church
The Vicarage, The Parade, Milton Abbot PL19 0NZ

Churchwardens

Lifton - St Mary's

Mrs E Brown 01566 784386

Sarah Chandler

Broadwood - St Nicholas

Mr D Perkin 01566 776758

Stowford - St John the Baptist

Mr C Chick 01566 783223

Lewtrenchard - St Peters

Mrs A Westlake 01566 783909

Mrs R. Dawe 01566 788838

Thrushelton - St George

Mr A J Nash 01566 783274

Mr T Nash 01566 783320

Kelly with Bradstone - St Mary's

Mr W Kelly 01822 870393

Marystowe - St Mary the Virgin

Amy Harrowell 01822 860181

Joy McSmythurs 01822 860630

Coryton - St Andrews

Mr G. Vicat 01822 820254

Mrs J Whitfield 07989 666427

From the Parish Priest

Christmas Already?!?

Dear friends,

This may seem a bit soon, but I am preparing for Christmas and need your assistance!

Within the period between Advent Sunday and Candlemas (basically all of December and January) we will be having six major Mission Community events, above and beyond our normal activities, one based in each of our parishes, but for the benefit of all! I hope to have a full timetable of these ready for the next magazine.

One of the events will be a Crib Festival, an opportunity to think about the famous Christmas Nativity scene, and to enjoy the many interpretations that adorn our homes, schools, and churches.

We would love to have as many examples of the Christmas Crib on display as possible, so if you have one, or more, we would be very glad for you to let us use it in our festival. Whether it has been in the family for years, or was made by the children at nursery, or knitted by a favourite Auntie, or carved as trench art in the wars.... Whether it is made of wood, or plastic, whether it is very old or brand new, or whether it was made locally, or far away, we would love to be able to include it, and its story, in what we are hoping, will be a wonderful festival leading into Christmas.

Do please get in touch and let us know if you would like to join in with this celebration, which will take place over the weekend before Christmas, and conclude with a special Carol Service. There will be more details forthcoming later, but I wanted to give everyone good notice so that we can have the best display possible.

Those of you who know me well will know that I hate the early celebration of Christmas. I love Advent to be a season of waiting and hoping, and I so enjoy the excitement of Christmas Eve and the joy of the whole Christmas season, but that doesn't happen unless someone has done the preparation in advance.

So... if you would like to be part of this year's celebration, then let me know and it will be wonderful to have you on board!

With love and prayers

Philip

Service times for August 2025

Any updates will be posted on the Mission Community Website <https://north-tamar-churches.org>

6pm	on the eve Saturday 6th September Vigil Office at Kelly
7th September	Trinity 12
9.30am	Parish Eucharist at Lifton
11.15am	Parish Eucharist at Stowford
6pm	on the eve Saturday 13th September Vigil Office at Kelly
14th September	Holy Cross Day
9.30am	Parish Eucharist at Broadwoodwidge
	Morning Prayer at Thrushelton
11.15am	Harvest Eucharist at Lewtrenchard see separate notice
6pm	on the eve Saturday 20th September Vigil Eucharist at Kelly
21st September	St. Matthew: Apostle and evangelist
9.30am	Parish Eucharist at Lifton
11.15am	Harvest GIFT service at Stowford see separate notice
	<i>A special Service for everyone celebrating St. Matthew and our Harvest.</i>
6pm	on the eve Saturday 27th September Harvest Office at Kelly
28th September	Trinity 15
9.30am	Parish Eucharist at Thrushelton
	Morning Prayer at Lifton
11.15am	Parish Eucharist at Lewtrenchard
6.30pm	Harvest Festival Service at Broadwoodwidge see separate notice

Wednesday Morning Eucharist: 10.30 at Lifton

There will be some occasions when the Wednesday Morning Service will be a service of Morning Prayer.

Bridestowe Methodist Church

Preachers for September 2025

7th	Drop in the Ark	10:30 - 12:30
14th	A Bandfrel S	11:00
21st	US at CofE HF	09:30
27th	Bridestowe Worship Group	11:00

St. Mary the Virgin, Marystowe

Please see the church website www.southtamar.church for details about services.

7th September	09:30	Holy Communion
21st September	09:30	Morning Praise

Services are also available online from 6pm on Sundays

Quakers

Meeting for Worship:

Tavistock

Every Sunday 10.00am.

4 Canal Road

Tavistock

Contact: Kay Nicholson
01822 614596

Okehampton

Second Sunday 10.30am.

Fourth Sunday 10.30am

Second Sunday Children's Meeting

Ockment Centre

North Street

Okehampton

Contact: 01837 55805

Roman Catholic Services

Tavistock

Sunday 9.15am

Holy Days 10am

Fr. Greatbatch 01822 612645

(P. Sparling 01822 860355)

Okehampton

Sunday 11.15am

Sunday 5.30pm

Chagford - Saturday 5.30pm

Fr. A. K. Gundabathina 01837 52229

anil.gundabathina@prcdtr.org.uk

Launceston

Sunday 10.30am

Holy Days 7.30pm

Canon John Deeny 01566 773166



Harvest Thanksgiving 2025
In the
North Tamar Mission Community



**The Parish Church of
St. Peter, Lewtrenchard**

Sunday 14th September 2025
11.15am

Harvest Thanksgiving Eucharist

*Followed by
Bring and Share Harvest Lunch*

**The Parish Church of
St. John the Baptist, Stowford**

Sunday 21st September 2025
At 11.15am

**GIFT service for
Harvest Thanksgiving**

*Followed by
Bring and Share Harvest Lunch*

**The Parish Church of
St. Mary the Virgin, Kelly**

Saturday 27th September 2025
At 6pm

**An Office of
Harvest Thanksgiving**

*Followed by
Harvest Supper at Kelly Hall, Meadwell*

**The Parish Church of St. Nicholas
Broadwoodwidger**

Sunday 28th September 2025 at 6.30pm

Harvest Thanksgiving Service

*Followed by
Refreshments in The Hub.*

**The Parish Church of St. George,
Thruskelton**

Friday 3rd October 2025
at 7pm

Harvest Thanksgiving Service

*Followed by
Supper in the Church*

**The Parish Church of
St. Mary the Virgin, Lifton**

Friday 10th October 2025
at 7pm

God's Generosity, Our response
*An evening of Celebration, fellowship
and commitment.*



St Peter's, Lewtrenchard
Harvest Festival
11:15 at St Peters
Sunday 14th September

To be followed by a Bring and Share lunch at the newly reopened
Lewtrenchard Manor

IN THIS DESIGN

DESIGN AND CONTENT STUDIO

HELPING BRANDS STAND OUT

- LOGOS
- BUSINESS CARDS
- POSTERS & BANNERS
- LEAFLETS & BROCHURES
- SOCIAL MEDIA POSTS
- AND MORE

📧 @inthisdesign

✉ inthisdesign@outlook.com

Milton Abbot Grouped Parish Council

Please see our website for lots of information
about Milton Abbot, Chillaton, Bradstone, Dunterton and the surrounding
areas, along with a list of the local Parish Councillors

www.magpc.co.uk

Stowford
Parish Hall



For bookings and enquiries contact Julie Chick Tel: 01566 783223

Email: stowfordparishhall@gmail.com

A Defibrillator is located in the porch - Postcode EX20 4BZ

Charity No: 1020031



Gardeners



Enjoy the Winners Circle
For that champion veg
Collect your own FREE
Proper Well Rotted Horse manure

01566 783 515

lydvalefellponies@gmail.com

Free Bags Available!
Trailers welcome!



The Clovelly Inn

Bratton Clovelly



Torben, Suzy, Alex & Thomas
look forward to seeing you
01837 871447

Apples Juicing

Have you got too many apples?
We can crush them, press, bottle
& sterilise for Juice

Contact - George Bellamy
Woolacott Farm, Lewdown

01566 783266

TOP SOIL

TOP QUALITY TOP SOIL FOR SALE

SEA SAND

ROAD PLANINGS

VARIOUS DECORATIVE GRAVEL CHIPPINGS & BUILDING AGGREGATES

No VAT

01566 784645 OR 07771 823414

Tim Dixon

Domestic Plumbing & Bathroom Fitting

01566 784028
07903535881

careful & reliable service

timdixonplumbing.co.uk



**Low Trenchard C of E
Primary School**



Monday to Friday
8.45am to 3.15pm
2-5 year olds

Led by Lisa Broadbridge
Early Years Teacher

Please phone for availability
Early Years Foundation Unit with plenty
of safe outdoor space.
We accept 2gether funding for 2 year
olds and Early Years Education Funding
for 3 year olds.

Respect
Kindness
Responsibility

FLS

Friends of Low Trenchard C of E Primary School

We have an amazing team that
fundraise to enhance our children's
learning journey. Please see our FLS
Facebook page, school website and
local adverts to support our fantastic
school.

Bingo ~ Bake sale ~ summer/winter fair ~ raffles ~
jumble sale ~ sponsored activities and much more!

Wrap around care

Available for 3-11 year olds
£2 per hour (1/2 hour bookings available)
8am to 8.40 am breakfast club £2 per session
3.15pm to 5.15pm (4.15pm Fridays) after school care including snacks.

For more information, contact the school office on
01566 783273

www.lewtrenchard.devon.sch.uk
Email lewtrenchard@andaraz.org



MARK CHIVERS - SOLE TRADER

Highly skilled carpenter with over 40 years
experience, including but not limited to:

INTERIOR

KITCHEN • BATHROOMS • BEDROOMS
FLOORING • DOORS • WALLS

EXTERIOR

FASCIA & SOFFIT • GUTTERING & DOWNPIPE
WINDOWS (including sash repairs) • FENCING

FREE ESTIMATES - UNDER NO OBLIGATION

The best price and best service for your budget
Please Do Not Hesitate To Contact Me With Any Enquiries:



CARPENTRY & JOINERY

Mobile: 07804 104812
(8am-7pm)

Home: 01566 783743
(9am-5pm)

Email any time:
m.c.carpentry@outlook.com

RED SQUIRREL TREECARE

Chillaton - Devon
Tree Removal - Pruning

Hedge Cutting- Seasoned Firewood

Low impact/small scale Forestry

call Matt on 01822860651

e:info@redsquirreltreecare.co.uk



Why Get Wet?

White Umbrellas

For

Your Wedding



To Hire

Tel: 01566 783342

All Proceeds to the Gurkha Welfare Trust

T C M Plumbing



Burst pipes? Tap dripping? Overflow running? Valves Leaking?

Radiators not getting hot? Gutters blocked or leaking?

Based locally at Inwardleigh we cover the surrounding areas

Helping you with your plumbing needs no matter how small

Contact Tim Morgan

Tel: 01837 810599

Mobile: 07838 901803

Or visit our website www.tcmlumbing.org.uk
to see what we can do for you



Blue Lion Inn, Lewdown

Charlie, Nicky, Charlotte, Georgia, Jonty & Alfie
Welcome you to our Family Friendly Pub

01566 783238



*Public House offering good food, real ales,
live music, pool, darts and BT Sports*

*For upcoming live music & quizzes etc. follow us on Facebook
Search for 'blue lion inn'*



Mobile Foot Care

Sally Isaac S.A.C. Dip. FHPT/FHPP



*Gentle and professional
foot care
in your own home*

If you suffer discomfort from

- corns
- cracked heels
- callus
- ingrown toenails
- thickened/tough nails

*or just have difficulty cutting
your toenails then
please ring me*

I'll come to you!

Telephone Sally
07961 076 168

WELCOME TO
LOBHILL FARMHOUSE
BED AND BREAKFAST
and HOLIDAY COTTAGE



Lobhill Farmhouse, Lewdown
EX20 4DT

Tel: 01566 783542
07817 244687

Jane Colwill

www.lobhillbedandbreakfast.co.uk

COLOUR PRINTING & COPYING

This service is available for a minimum of 10 copies at a charge of 5p/single or 7p/double sided copy.

For sale Copier Paper £4.75/ream

The Community NewsLink purchases its paper in bulk and as such is able to access competitively priced materials. We can currently offer our readers copier paper for the special price of £4.75 per ream, a vast saving on High Street prices. We recommend you phone to check availability and arrange a convenient time to collect.

Contact Terry Southcott
Fairview Bungalow, Lewdown
01566 783079 or 07831309666

All proceeds go to:
Lewdown Residents Association
who produce Community NewsLink

ROGER WONNACOTT

GROUND & GARDEN MAINTENANCE

- ▲ GENERAL GARDEN MAINTENANCE
- ▲ SERVICES RENEWED & REPLACED
- ▲ LEAK REPAIRS & TROUBLESHOOTING
- ▲ MOLE / GRUNDOMAT WORK UNDERTAKEN
- ▲ MOLE & COMPRESSOR AVAILABLE



- ▲ COMPLETE JOB PRICING OR HOURLY RATES
- ▲ FULLY INSURED & BASED NEAR LAUNCESTON

07919 912776
✉ rwonnacott@hotmail.com



supplier of
HARDWOOD LOGS
cut and split to your
requirements
Tel. Colin Bennett:
01822 487259
Mobile:
07523172369

Lewdown Victory Hall

Bookings contact
Roy Stacey
on 01566 783267



Broadbury Landcare

All aspects of Garden Maintenance
and Landscaping

Fully Qualified Fully Insured Free Estimates
18 Years Experience

Andrew Barton 07532 216216

Raw Meat Animal Feed For **Dogs & Cats**

Convenient blocks *Frozen to preserve*

Natural, just meat or meat and bone

No Preservatives, No Artificial Colouring's
(both can be harmful to your animal)

Raw Rations Plus



For information or to order

website: **www.rawrationsplus.co.uk**

Phone: **07831309666 or 01566783079**

Email: **sales@rawrationsplus.co.uk**

Post: Fairview Bungalow, Lewdown,
Okehampton, Devon EX20 4DL



A C WORTH BUILDERS



GENERAL BUILDERS, DECORATORS,
PLUMBING & HEATING,
PURPOSE MADE JOINERY etc.

Kirtonia, Vale Down, Lydford DEVON EX20 4BB

Email: acworthbuilders@aol.com



Tel: 01566 783282
Keith: 07778 471648
Andy: 07867 524515



CBL STOVES

The Showroom, Unit 5
Red Post, Bude, Cornwall
EX23 9NW

01288 381852
carl@cblstoves.co.uk
www.cblstoves.co.uk



Registered
Heating
Business



- Stainless Steel twinwall flues
- Chimney Lining
- Iskoern Pumice lining
- Fireplace alterations
- Stove Installations
- Wood, Multifuel, Gas & Electric Traditional & Contemporary Stoves & Fires
- Chimney Rebuilds
- Slate, Granite & Glass Hearths
- Wood & Ceramic beams & surrounds
- Floating Shelves



R Mears & Sons

Chimney Sweeps & Stove Installation

Established over 30 years

Vac Brush. Full CCTV investigations.

Pots, Cowlings & Bird Protection fitted. Chimneys Lined.

Solid Fuel Appliances, Rayburns, Woodburners,
Stoves, etc serviced. Fully Insured.

Tel: 01840 261221 Tavistock: 01822 664554

Mob: 07737 533392

www.sweepdevon.com



GRAHAM TOWNSEND GROUNDWORKS

WATER DRAINAGE & GROUNDWORK SPECIALISTS

**WATER LEAKS & RENEWALS
SEPTIC TANKS INSTALLED**

**DRAINS CLEARED
TREATMENT PLANT
ALL FENCING WORK
DEMOLITION**

**GROUNDWORKS
DRAINS REPLACED
MOLING (No Dig)
PATIOS DRIVES**

FREE ESTIMATES

TEL: 01837 657687 / 01566 783788

MOBILE: 07866 465093

email: info@gtownsendgroundworks.com

Roger's Painting & Decorating Services

**Interior & Exterior Work
Traditional & Modern Techniques
City & Guilds Qualified
30 years Experience**



Mobile: 07783 819171

Septic Tanks

Emptied

Phone: 01805 601203

Mobile: 07831 241531

**Leave a message, we will re-
turn your call, or email:**

hearnhaulageltd@outlook.com

**Small Lorry
Available**

Card payment accepted

Hearn Haulage Ltd



fabric and furniture

Upholstery Service

Collection & Delivery Available

 @fabricandfurniture
 fabricandfurniture
 Linda 07484 093494
 sales@fabricandfurniture.co.uk
www.fabricandfurniture.co.uk

A.J.NASH BUILDERS LTD

Andy Nash

General Builder & Decorator



07769728425

01566783274

sarahnash@btinternet.com

K. Moore & Son. PLANT HIRE

Specialising in all sitework,
drives, sand schools, septic tanks
hedging and all types of farmwork.

Royal Oak, Newton Down, Lifton

Tel:- 01566 784722

07785 540494



07734 956925
8- Seater Vehicle Available

Anytime - Anyplace - Anywhere

AIRPORT • TRAIN STATION
SHOPPING • DOCTOR

Prompt Reliable Honest
FAMILY RUN COMPANY
24/7 365 days

Chair Yoga for Seniors

with Yogajeanie

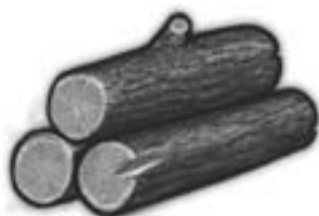
Chair yoga helps with
Muscle toning
Reduced stress levels
better breathing habits
better sleep
overall sense of well-being
It's fun too!

Interested?
Just come along in comfy clothing

At Lewdown Village Hall
Thursday's
from 10:00 am -11:00 am
£7 per class

For more information contact
jeanharris50@hotmail.com
Mobile 07929 278788

LOGS



SEASONED
HARD WOOD,
SPLIT TO YOUR
REQUIREMENTS.

DELIVERED
LOCALLY

07942 073204
the2relics@gmail.com

PLUMBER

EST 40 Years

Lewdown
& District

Tel: 01566 783562

Mobile: 07731878510

TINHAY

BUILDING SUPPLIES LTD

Supplying quality building materials to the trade and DIY

**We're bigger
than you think**

Lifton

Tinhay Mill Industrial Estate, Tinhay, Lifton, Devon PL16 0AH

Telephone: 01566 784385

Email: lifton@tinhaybuildingsupplies.co.uk

Launceston

Newport Industrial Estate, Launceston, Cornwall PL15 8DX

Telephone: 01566 771989

Email: launceston@tinhaybuildingsupplies.co.uk

Tavistock

Pixton Lane, Tavistock, Devon PL19 8DH

Telephone: 01822 419509

Email: tavistock@tinhaybuildingsupplies.co.uk

FREE LOCAL DELIVERY  

www.tinhaybuildingsupplies.co.uk

BROADWOOD BOILER SERVICES



**QUALITY OIL FIRED APPLIANCE
MAINTENANCE AT
COMPETITIVE PRICES**

CALL MARK

 0781 4976 076 OR 01566 784298

MARKSTONE GRANITE

We don't just sell granite.....

- * Slate: Flooring, Worktops, Sills, Hearths, Tables & Benches.
- * Oak Beams, Sleepers, Barrels & Boards (perfect for shelves)
- * Natural Stone Paving & Cobbles.
- * Porcelain Paving & Flooring.
- * Reclaimed Bricks
- * Granite Quoins, Cobbles, Lintels, Steps, Plinths, Posts & Troughs



Tel. 01566 784289 Lifton Devon.
www.markstonegranite.co.uk



TAVISTOCK STOVES

& FIREPLACES

Woodburning, Multifuel,
Electric & Gas Stoves.



In our Showroom:

- Live working displays
- Maintenance products – rope, bricks, glass, cement, paint etc
- Fireplace accessories



Our Services Include:

- Free site survey.
- Full installation service.
- Repair & maintenance.



4 Vigo Bridge Road, Tavistock, PL19 0EY
Tel. 01822 487700 sales@tavistoves.co.uk
www.tavistoves.co.uk

S H Joinery

Granite and Quartz worktop cutting and fitting

Cut roofs

Traditional A frames

Kitchen fitting

External bi fold doors

Joinery



Steve Hunt

07974 799062

shjoinery@hotmail.com



Caroline Harris MIAB
Owner & Bookkeeper

Tel: 01566 783 502

Mob: 07866 953 708

cmhbookkeeping@btinternet.com

www.cmhbookkeeping.co.uk

- + Bookkeeping
- + Self Assessments
- + Accounts Preparation
- + VAT Returns

Bratton Clovelly & Area Twinning Association

(incl. Bratton Clovelly, Thrushelton, Lewdown, Stowford, Portgate, Northlew, Chillerton, Halwill, Milton Abbot, etc.)

We have been twinned with Nonant a commune in the Calvados department in Normandy, France for 48 years and we need new members to join us in first visiting, then perhaps hosting on a biannual basis.



We are visiting our French friends from May 14 - 18 and you are welcome to join us, children are welcome, no French required.

For information contact Monique, club secretary:

monique@hedger.biz

