

**The Area Magazine for Lewdown, Stowford, Thrushelton,
Lewtrenchard, Chillaton, Coryton & Marystow**

June 2025

community newslink

for all that's going on in your area...

50p
donation



Published by the Lewdown Residents Association

Registered Charity Number: 1071808

Funded by the Subscribers, Advertisers, Sponsors & Area Churches

**Fire/Police/Ambulance
Emergency 999**

All other contact with Police 101

Police Contact/Crime Prevention
PCSO Seonlad Greenwood 101

Neighbourhood & Farm Watch

Horse Watch Gina 01837 840716
Floodline 0345 988 1188

Parish Clerks

Lewdown Grouped
Peter van Delft 01566 783023
lewdowngpc.clerk@gmail.com
www.lewdowngroupedpc.org.uk

Milton Abbot Grouped
Jane Savage
clerk.magpc@outlook.com
www.magpc.co.uk

Stowford
Peter van Delft 01566 783023
stowfordclerk@gmail.com
www.stowfordparishcouncil.org.uk

West Devon MP

Geoffrey Cox 01822 612925

County Councillor

Lois Samuel 01837 851240

Borough Councillors

Milton Ford Ward
Neil Jory 01822 860342
Bridestowe Ward
Terry Southcott 01566 783079
Caroline Mott 01837 861212
Tamarside Ward
Chris Edmonds 01566 784794

Schools

Lewtrenchard 01566 783273
Lifton 01566 784288
Milton Abbott 01822 870273

Colleges

Tavistock 01822 614231
Okehampton 01837 650910
Launceston 01566 772468

Ring & Ride

Okehampton Area 01837 55000
Tavistock Area 01822 618028

Community Groups

Cricket Club 07847111330
Chillaton Football Club 01822 860476
Lamerton Pony Club 01822 860350
Lewdown Past 01566 783396
Lewdown Residents Assoc. 01566 783320
Lewtrenchard WI 01566 783765
Lifton Benefice Churches
Revd Philip Conway 01566 784462
liftontpriest@yahoo.com
Lifton Surgery 01566 784788
01566 784111
Red Spider Company 01409 221376
Recreation Field 01566 783367
Stowford Hall 01566 783223
Victory Hall 01566 783267
Youth Cricket 07847111330
Young Farmers 07443 461344

Advice Helplines

Citizen's Advice Bureau 08444 111444
West Devon Women's Aid 01837 55228
Age Concern 01752 665424
Health Information Line 0800 665544
Homelessness Trust 01822 615259
Parentline 0800 8002222
Relate 01392 275681
Samaritans 08457 909090
Tavistock Area Support Svcs. 01822 616958
Age UK 01822 616958
Transport to Health 01822 617525
Victim Support 01822 820455
Youthwise Okehampton 01837 54004

Shop & Post Office

Copper's PO & Stores 01566 783218
Lifton PO & Stores 01566 784211

Front Cover Picture

Description

*VE Day Celebrations at Stowford Parish
Hall with Stowfordians dressed in 1940's
clothes.*

Photo: Esther

newslink archive

www.rawrationsplus.co.uk/lraarchive.html

For us to be able to print and distribute the community newslink it costs approximately £500 a month.

Please make an annual donation of £5+ for yours to:

Account name: **Lewdown Residents Assoc.**
Sort code: **090154**
Account number: **97666081**

Thank you for your support

community newslink

Produced by Lewdown Residents Association

A magazine providing news, information & items of interest for the areas of Lewdown, Stowford, Thrushelton, Lewtrenchard, Chillaton, Coryton & Marystowe

Established January 1999
Issue No. 290 June 2025

Editor: Simon Hedger
St. Anthony's, Stowford, Lewdown, Okehampton EX20 4BY
Telephone: 01566 783765 Email: newslink@hedger.biz

Production, Distribution and Delivery Helpers:
Tim & Sarah Nash, Simon & Monique Hedger, Terry Southcott, Andy McCarthy, Ruth Dawe, Audrey Jones, Tom Andrews, Mike Bickell, Esther Van Delft, Rita Squires, Bob Holland, Julie Chick, Coppers Stores, Keith Abayomi-Turner

All news, photographs, reports, events, etcetera for NewsLink need to be sent to the Editor by the 15th of the preceding month.

We welcome your articles / items / advertisements. Though we do our best, we cannot guarantee to publish all that is sent to us.

B&W advertising in newslink is free for Charity events in our local areas.

Adverts for events outside of the area and for businesses are priced as follows:

	Black & White	Colour
1/4 page	£4/month or £40/year	£6/month or £60/year
1/2 page	£8/month or £80/year	£12/month or £120/year
Whole page	£12/month or £120/year	£16/month or £160/year

Please note that advertising prices are subject to VAT at 20%

Good evening to you all, I've just come inside after hoeing through the garden. I hate to burst your bubble, regarding the wonderful weather over the last few weeks, but in truth my garden could do with a bit of a soak, just over the immediate area of the potatoes would be ideal.

Good news everyone. The present Mrs Nash and myself are off to Exeter to see Paul Young, he who had several hits in the 80s , and he was the first performer we saw in concert back in 1985, at Carlyon bay , this was before wedding bells even started to ring . Nick still has the sweatshirt she bought on the evening, and has every intention of wearing it again on the night. It just proves she's not altered a bit, where as I am now an official grumpy old man, and if anyone out there says that nothing has changed over the last few decades then I will probably burst into tears.

Will close now as we are looking after our daughter's dog, and it will need a walk again. It's the victory hall jumble sale tomorrow so we could be open to offers.

Best wishes to you all. From Tim Nash your chairperson extraordinaire.

One of my co-workers has been having a lot of issues with their legs lately, a lot of pain in their joints and muscles, to the point they went and got an operation to replace them with insect legs. I asked "are they any good?" He replied "They really are the bee's knees."

A truck load of Vicks nasal spray has overturned on the M5 near Exeter recently. Surprisingly there was absolutely no congestion for hours.

Why is the Incredible Hulk good at gardening?, He has green fingers. Sorry about this effort, it just slipped in as it's spring 😊

Soupa Troopers

All welcome to this community event



Wednesday June 11th

From 12.30pm in Lewdown Victory Hall

Soup and a Bread Roll, Tea or Coffee - £4

Followed by conversation & games



Stowford
Parish Hall



Stowford Parish Hall Committee Members

Would like to thank all those who joined us at the 80th VE Day celebrations at Stowford Village Hall. We were very grateful to Lewtrenchard WI for hanging their Poppy Display in the hall and the people who generously donated raffle prizes and bunting. Everyone shared a delicious Bring & Share and their memories of those connected to the events of WWII. Memories and prayers hung on the Commemorative Tree are framed and will be displayed in the hall for all to read.

Lewtrenchard WI May Report

Barbara welcomed 17 members to this normal & annual meeting. Barbara also extended a warm welcome to Sarah Adkins, our new dual member.

As always, we started off by singing Jerusalem

Barbara reported that Mary Rolfe very sadly passed away. Mary joined us in 1987, joined the committee in 1988, was secretary from 1993-1996, she loved the federation quizzes and playing Skittles at the Blue Lion, she was a much-loved member and we will miss her.

Our May meeting was in 2 halves, first the normal meeting, second the annual meeting where we elected the committee and our president.

theWI
INSPIRING WOMEN



VE day celebrations were brilliant, our poppy curtain was beautiful for all to see at the Lewdown memorial and Stowford Hall, members are encouraged to make poppies all year round for an even grander display later this year. The June Outing will see us visit the Cinnamon Trust - they do such amazing work. Our Rampsonwillis project is a delight, many families have been having picnics at our table and using the space for recreation.

Margaret Perkin, our oldest member celebrated her 90th birthday in style.

We were sorry to see some members leave due to work pressure, but very happy to welcome a new full time and a new dual member.

We have an exciting diary for 2025/26. Do pop in if you want to know more.

We then moved swiftly on to part two, the annual meeting. Very happy to announce that the committee remains as is and that Barbara was re-elected president for another year, well done Barbara, you do a fine job and everyone is looking forward to the coming year.

Date and venue for next meeting: Monday June 9 - Day Out to the Cinnamon Trust (no meeting in the evening).

Dates for your diary:

19th Coffee morning at Alder Vineyard contact Mary E/Lynn

23rd Walk contact Mary E/Lynn

No Food Craft & Skills during the summer months, recommences September



The season is up and running and we have already played our first 3 competitive matches.

3rd May : Lewdown 1st XI 197/8, Chudleigh 2nd XI 198/4. Notable Performances Tim Shaw 70 runs & Keith Maynard 8 overs 3 wickets for 13 runs

10th May : Stoke Gabriel 2nd XI 228/8, Lewdown 1st XI 123 All Out

10th May : Lewdown 2nd XI 145/6, Ivybridge 4th XI 149/2. Notable performance Nick Hayden 54 not out.

With a number of players becoming available we hope to be able to report better results in the coming weeks!

2025 OUTDOOR TRAINING (Throughout the summer)

Adult Training every Thursday (6.30pm onwards) Adults from 13+ at the Recreation Field

Junior Training will begin on Friday 25th April at 6.30pm at the Recreation Field

HOME FIXTURES (1.00pm start)

Saturday 31st May 1st XI vs Bovey Tracey

Saturday 7th June 2nd XI vs Buckfastleigh

Saturday 14th June 1st XI vs Ashburton

Saturday 21st June 1st XI vs Ipplepen

Saturday 28th June 2nd XI vs Dartington & Totnes

Saturday 5th July 2nd XI vs Bovey Tracey

Your support will be most welcome

Club Contact:

Geraint Williams 07850 786310

Junior Cricket Coordinator:

Mike Maynard 07974 756136



The North Tamar Mission Community



St. Mary the Virgin,
Kelly with Bradstone

St. Mary the Virgin,
Lifton

St. Nicolas,
Broadwoodwidge

St. John the Baptist,
Stowford

St. George,
Thrushelton

St. Peter,
Lewtrenchard

Ministers

Lifton, Broadwoodwidge, Stowford, Lewtrenchard, Thrushelton & Kelly with Bradstone United Benefice

The Revd. Philip Conway, 01566 784462 liftonpriest@yahoo.com
The Rectory, Parsonage Court, Lifton PL16 0BJ

Milton Abbot Benefice

The Revd. Andy Atkins, 01822 870298 andya4jc@gmail.com
The Vicarage, The Parade, Milton Abbot PL19 0NZ

Churchwardens

Lifton - St Mary's

Mrs E Brown 01566 784386

Sarah Chandler

Broadwood - St Nicholas

Mr D Perkin 01566 776758

Stowford - St John the Baptist

Mr C Chick 01566 783223

Lewtrenchard - St Peters

Mrs A Westlake 01566 783909

Mrs R. Dawe 01566 788838

Thrushelton - St George

Mr A J Nash 01566 783274

Mr T Nash 01566 783320

Kelly with Bradstone - St Mary's

Mr W Kelly 01822 870393

Marystowe - St Mary the Virgin

Amy Harrowell 01822 860181

Joy McSmythurs 01822 860630

Coryton - St Andrews

Mr G. Vicat 01822 820254

Mrs J Whitfield 07989 666427

From the Parish Priest

Thy kingdom Come 29th May - 8th June 2025

Every year Christians across the world pray from Ascension to Pentecost for something special. For eleven days over a million Christians from all dominations and in 90% of countries world wide are involved. They pray that people amongst their friends, colleagues, families and neighbours who haven't yet come to faith in Jesus may do so. Prayers are said for people to hear the

Word of Jesus and feel the Holy Spirit.

This year in the North Tamar Mission Community we are holding a prayer meeting every Thursday for 5 weeks starting 8th May. Held between 6 and 7pm in St Mary's Church Lifton everyone is welcome. Refreshments including cake will be available.

There will a service at Exeter Cathedral on 8th June to celebrate the end of Thy Kingdom Come for this year. Please see our website or contact your local church for further details. Everyone is welcome.

Further information is available at: nabntmc@outlook.com or exter.anglican.com.

Peace and blessings

Nicola

Service times for June 2025

Any updates will be posted on the Mission Community Website <https://north-tamar-churches.org>

1st June **6pm** **on the eve Saturday 31st May Vigil Eucharist at Kelly**
 Easter 7
 9.30am **Parish Eucharist at Lifton**
 11.15am **Parish Eucharist at Stowford**

8th June **6pm** **on the eve Saturday 7th June Vigil Office at Kelly**
 Pentecost
 9.30am **Parish Eucharist at Broadwoodwidge**
 Morning Prayer at Thrushelton
 11.15am **Parish Eucharist at Lewtrenchard**

In the Afternoon: Thy Kingdom Come event at Exeter

15th June **6pm** **on the eve Saturday 14th June Vigil Eucharist at Kelly**
 Trinity Sunday
 9.30am **Parish Eucharist at Lifton**
 11.15am **GIFT service at Stowford**

A service for the very young and those who care for them.

22nd June **6pm** **on the eve Saturday 21st June Vigil Office at Kelly**
 Trinity 1
 9.30am **Parish Eucharist at Thrushelton**
 Morning Prayer at Broadwoodwidge
 11.15am **Parish Eucharist at Lewtrenchard**

29th June **Trinity 2**
 Fifth Sunday Mission Community Eucharist at Tinhay Retreats
 See separate notice

Wednesday Morning Eucharist: 10.30 at Lifton

There will be some occasions when the Wednesday Morning Service will be a service of Morning Prayer.

Bridestowe Methodist Church

Preachers for June 2025

1st	Drop in the Ark	10:30 - 12:30
8th	Bridestowe Worship Group	11:00
15th	US at the C of E	9:30
22nd	B Balton	11:00
29th	Circuit Service at Fairplace	10:30

St. Mary the Virgin, Marystowe

Please see the church website www.southtamar.church
for details about services.

Services are also available online from 6pm on Sundays.

Quakers

Meeting for Worship:

Tavistock

Every Sunday 10.00am.

4 Canal Road

Tavistock

Contact: Kay Nicholson
01822 614596

Okehampton

Second Sunday 10.30am.

Fourth Sunday 10.30am

Second Sunday Children's Meeting

Ockment Centre

North Street

Okehampton

Contact: 01837 55805

Roman Catholic Services

Tavistock

Sunday 9.15am

Holy Days 10am

Fr. Greatbatch 01822 612645

(P. Sparling 01822 860355)

Okehampton

Sunday 11.15am

Sunday 5.30pm

Chagford - Saturday 5.30pm

Fr. A. K. Gundabathina 01837 52229

anil.gundabathina@prcdtr.org.uk

Launceston

Sunday 10.30am

Holy Days 7.30pm

Canon John Deeny 01566 773166

Gardening Jobs For June

After one of the driest springs on records, who knows quite what this month will hold. That said, there are still plenty of jobs to get on with whatever the weather.

Growing tomatoes (cont.)

In the April edition I started a guide on growing tomatoes, and I thought now was a good time to continue it by giving you a few more tips for the next stage.

If you haven't already planted your tomatoes, don't worry early June is fine. They can be planted deep, with their stems buried up to the first set of leaves. This is particularly helpful if your plants have gotten a bit leggy as new roots will grow from the buried stem and make them more sturdy.



There are lots of options for supporting or training cordon tomatoes, I simply plant mine against canes and you can then use twine or plastic clips to tie them in. Alternatively, you can secure nylon string to the supports at the top of your greenhouse or polytunnel, tie a knot in the end and bury this under your tomato as you plant it. Then, as the plant grows you can twirl it around the nylon string.



Once your tomatoes are established and a foot or so high, you will need to start taking off lower leaves. This will help improve ventilation and allow more light in, which is particularly important when the first flowers start to appear.

It is also good practice to pinch out side shoots which appear between the main stem and leaf nodes. Some varieties (like Gardener's Delight) don't need side shoots to be removed, but they will get bushier so think about your space and the variety you have.

Quick fire tips

- Keep on sowing! While it is now too late to sow crops that require a long growing season, there is plenty of time through June to sow more beetroot, dwarf French beans and spring onions.
- You can keep picking rhubarb and asparagus throughout June, but it is best to stop by the start of July as this allows the plants to put energy back into their roots ready for another great crop next year!
- There are a number of crops from which it is very easy to save your own seed ready to sow next year. Peas are a great example, as all you have to do is leave a few pods unpicked on the plant. Once the pods have dried out, simply hull out the peas and leave on a window sill to dry out for another week or so. They can then be stored in paper envelopes ready to sow next spring.



May the weather be with you!

Liam

Orange & Almond Cake :

Prepare less than 30 minutes - Cook over 2 hours - Serves 8 .

Ingredients:

2 large oranges
butter, for greasing
plain flour (or gluten-free flour, if required), for dusting
6 free-range eggs
250g/9oz ground almonds
250g/9oz caster sugar
1 tbsp baking powder (gluten-free, if required)



Method:

Wash the oranges thoroughly. Bring them to the boil in a large saucepan of water and gently cook for two hours.

Preheat oven to 175C/325F/Gas 3, butter and flour a 23cm/9in cake tin.

Leave oranges to cool, before slicing in quarters and removing the pips.

Pulp the oranges in a food processor.

Beat the eggs and gradually stir in all the remaining ingredients, including the orange pulp. Pour into the cake tin and cook for about an hour, until the cake is golden in colour and has risen.

Transfer to a wire cooling rack, keeping the cake in the tin. When the cake has cooled, carefully remove from the tin and serve cut into slices.

By Jean

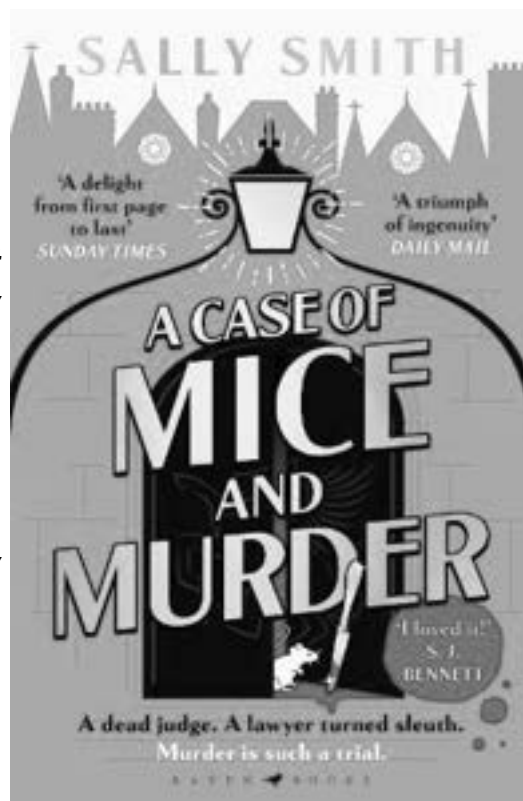
Thriller Book of the Month: A Case of Mice and Murder - The Trials of Gabriel Ward by Sally Smith

A wonderfully indulgent slice of cosy crime set at the turn of the twentieth century, *A Case of Mice and Murder* finds a barrister ensconced in a case about a children's book forced to investigate the slaying of the Lord Chief Justice of England.

When barrister Gabriel Ward steps out of his rooms at exactly two minutes to seven on a sunny May morning in 1901, his mind is so full of his latest case – the disputed authorship of bestselling children's book Millie the Temple Church Mouse – that he scarcely registers the body of the Lord Chief Justice of England on his doorstep.

But even he cannot fail to notice the judge's dusty bare feet, in shocking contrast to his flawless evening dress, nor the silver carving knife sticking out of his chest...

Publisher: Bloomsbury Publishing PLC
ISBN: 9781526668721





STOWFORD COMMUNITY COFFEE MORNING

Come and meet your neighbours for a coffee, cake and catch up!

We meet on the first Tuesday of every month at Stowford Parish Hall.

10am - 12noon. All friends and family welcome. £3 per person (cash only) which includes a hot drink and homemade cake.

All profits are donated to a charity chosen by villagers

If you need help with transport, please contact Tracy on 07973 327161



Low Trenchard C of E
Primary School



Monday to Friday

8.45am to 3.15pm

2-5 year olds

Led by Lisa Broadbridge

Early Years Teacher

Please phone for availability
Early Years Foundation Unit with plenty
of safe outdoor space.

We accept 2gether funding for 2 year
olds and Early Years Education Funding
for 3 year olds.

Respect

Kindness

Responsibility

FLS

Friends of Low Trenchard C of E Primary School

We have an amazing team that
fundraise to enhance our children's
learning journey. Please see our FLS
Facebook page, school website and
local adverts to support our fantastic
school.

Bingo - Bake sale - summer/winter fair - raffles -
jumble sale - sponsored activities and much more!

Wrap around care

Available for 3-11 year olds

£2 per hour (1/2 hour bookings available)

8am to 8.40 am breakfast club £2 per session

3.15pm to 5.15pm (4.15pm Fridays) after school care including snacks.

For more information, contact the school office on
01566 783273
www.lewtrenchard.devon.sch.uk
Email lewtrenchard@andaras.org



131 residents have already pledged but we continue to need just another 13 households or businesses to sign-up to the **Lewdown Exchange Project** before we reach the target set by Openreach to commit to providing our community with **High Speed Gigabit Internet** access.

Funded by UK Government

To sign-up visit:

www.openreach.com/connect-my-community

The North Tamar Mission Community



Invite you to join our

**Annual Special Summer
Fifth Sunday Celebration**

On Sunday 29th June 2025 at 11am

At

Tinhay Retreats

PL16 0EL

Followed by

**A Fellowship Lunch
In the Marquee.**



**EVERYONE OF ALL AGES,
(AND DOGS ON LEADS!)
VERY WELCOME**

From the Mountains of Japan

No.12 - Community Service

Many major cities in Japan, such as my own, are merely a conglomeration of dozens of smaller villages all grouped together under a single administrative district and joined by urbanisation. Therefore, local community ties and organisations, especially in semi-rural areas like ours, run deep.

The level of community organisation in Japan is infamous. Participation is on a rotation basis, and it's hard to escape your eventual turn. A couple of years ago I had to serve as the "ku-cho" for my area, a sub-leader of eight smaller subdivisions, each consisting of half a dozen houses, which basically required me to go to long meetings I couldn't understand and then deliver piles of leaflets to each of the eight sub-sub(?) leaders below me. It became quite a chore to come home and find regular piles of leaflets in the mailbox that I had to sort and deliver, but now that my year is done, it'll be a decade or so before it comes back around.

A few years ago, my neighbour, who had been newly installed as the local community centre chairman, invited me along to a meeting in order to add a bit of foreignness. All of a sudden I found myself as part of the "Circle" a group of a dozen or so locals, who, as far as I could tell, were responsible for organising local events, allocating government money, and so on. After sitting through an



hour or so of dull, mostly incomprehensible stuff about finances, I thought the meeting was over, and got up to leave.

And then the booze trolley was wheeled out.

What happened next, I can barely remember. Only that I ended up teaching several university drinking games to a group of old men, then woke up the next day with a savage hangover, and no memory of getting

home. I quickly learned at subsequent meetings to make a hasty getaway once the beer was finished and before the sake—Japanese rice wine—was opened. And due to the meetings mostly being held on weekday evenings, I soon started finding excuses not to go. One thing that Japanese old men can do with spectacular skill is drink. Even several years later, I'll occasionally bump into someone who'll grin, wink, and say "Fuzzy Duck!" in a funny foreign accent.

Chris Ward

Cocktail of the Month 'Mojito'

Mix this classic cocktail for a party...

...using fresh mint, white rum, sugar, zesty lime and cooling soda water. Play with the quantities to suit your taste.

YOU WILL NEED:

- juice of 1 lime
- 1 tsp granulated sugar
- small handful mint leaves, plus extra sprig to serve
- 60ml white rum
- soda water to taste



METHOD:

Muddle the lime juice, sugar and mint leaves in a small jug, crushing the mint as you go - you can use the end of a rolling pin for this. Pour into a tall glass and add a handful of ice.

Pour over the rum, stirring with a long-handled spoon. Top up with soda water, garnish with mint and serve.

A decorative border of various flowers and leaves, including roses, surrounds the text.

Stowford Village Open Gardens

EX20 4BZ

Sunday 8th June

11am-5pm

In aid of St John the
Baptist Church

Admissions to Gardens £6

Under 16's Free

Tickets will be available at
Stowford Parish Hall

Refreshments and a plant stall will be
available at the Village Hall, and in some
gardens, home made crafts are available for sale



May has been a bit of a quiet month for members with silage and harvest work taking place.

However members have been go karting recently, and Becky, Phoebe & Evie took part in the group round of call my bluff placing 3rd out of 7 teams which is a great result!

We have our upcoming charity big breakfast on Saturday 14th June 9am-1pm at Lewdown Hall- please see the back page of **newslink** for details...



The **Annual General Meeting** of the Friends of the Forgotten Garden of Lewtrenchard is being held at **7.30pm on Monday 16 June at the Lewdown Victory Hall** followed with a talk on **Lewtrenchard Manor**.

For more details and updates see our website:
www.forgottengarden.co.uk/category/news/

Reflections of a Steam Fireman

In the spring of 1966 we started to be rostered Specials on Sundays, the Locomotive club of Great Britain, with locos that were soon to be scraped.

One such turn was signed on at the loco and passenger (on the cushions) to Southampton Central via Woking, my driver was Derek Ansell of Guildford Loco and we were accompanied by another crew Driver Sid Woods and Fireman Ray Austin because we were working a double headed from Southampton to London Via Alresford (now the Mid Hants or Water Cress Line) and Aldershot on arriving at Southampton we waited for the Special to Arrive, I was on the pilot engine 31639 a U 2-6-0 tender engine and Sid & Ray were on the train engine 33006 a Q1 0-6-0 tender engine.

When the train arrived both engine were in a bit of a state. Dirty fire and low on steam as we had to take water the U first with two fireman, one would take water and the other would shovel the coal forward. Ray being the senior fireman said as the fires needed sorting, we would do our engine separately. Pulling the coal forward could wait till we stop at Alresford. I climbed the tender and filled up with water from the water column then we pulled forward to let the Q1



have some water. I then started to liven the fire up this involves a long heavy fire iron called a dart.

You would lift the clinker off the firebars so that the fire can breath and the steam started to rally while cursing the fire man that we just relieved.

Ray had is Q1 singing and with a pop of the whistle we set off, I now understood why the engine was not steaming we had too many on the footplate. Our loco inspector and his guest it was very difficult to keep lifting the

fire with a dart about 9ft long and not burning someone when it was withdrawn from the fire the end being red hot.

When we arrived at Winchester Junction we had to wait for a demu from Alton to clear the single line. So we stood at the signal for some time and I carried out rule 55. The Signaller explained the situation and I returned to the engine and tried to rally the fire, the demu appeared and the signal cleared and we pulled forward.

Now the U is right hand drive and the Q1 is left hand drive and the Token to pick up is on the right and the pilot engine does not take the tablet, that is for the train engine so my driver can see Ray the fireman take the tablet and when he is happy it for the single line section we are about to enter he will give the whistle code for all clear and off we set.

At Alresford we stop for some time and we were treated to sausage rolls and tea, my driver requested that there was too many on the footplate, this would enable me to use the dart safely. Off we set and top of the 1 in 60 bank at Medsted and Fourmarks the U lifted her Valve.

No drama Getting to Waterloo Except we were clocked at 71mph. At Walton On Thames it must have been an experience on the Q1 with it 5 foot driving wheels, when released from the train light engine to Nine Elms for disposal and home passenger

Tom

Farming Report

May has been a busy month on the farm turning all the cattle out to grass which is a great relief and a lovely sight to see. After some showers of rain earlier on in the month (anything's better than nothing!) the grass has zoomed on and cutting and storing the grass will be the next job on the horizon, getting ready for another winter, which always seems to come quicker every year and the summer is soon gone.



Becky Dennis

News from Lew Trenchard CofE Primary School



We had special celebration ! Last Thursday, we commemorated the 80th Anniversary of VE Day with a fun afternoon tea party on our school field. We all got to eat lots of yummy cake.

History came alive as we welcomed some amazing guests from Pendrucombe House! Pupils were treated to incredible firsthand stories of WW2 from those who lived through it as children.

It was really interesting listening to their personal stories - from being evacuated from London to welcoming evacuees into Cornish homes. The stories of wartime romance with American soldiers had everyone captivated!

These special visits are so enriching for everyone involved - watching young and older generations connect, share, and learn from each other is simply magical ✨

Lots of brilliant sporting achievements to celebrate.

First of all, our amazing Year 3/4 and 5/6 cross country runners who both finished 2nd. They all demonstrated resilience on some tricky courses.

Secondly, some Year 5/6 girls represented our school at a local cricket tournament. In such a short space of time, they made amazing progress and came a respectable 4th place.

We really value sport at Lew Trenchard and giving as many children as possible the opportunities to represent our school.

Year 6 (great links) are doing their SATS this week we are really enjoying the breakfast and treats.

We have had some brilliant news, one of our teachers Mr Jane has had a baby boy called Rupert! We can't wait to meet him!



MOUNT
KELLY
CHORAL SOCIETY

Invites you to
Come & Sing
Fauré's Requiem

Dan Robson - Director

Mary Mazur-Park - Organist

Saturday 28 June 2025

Catholic Church

Callington Road, Tavistock, PL19 8EH

14:00 Register and Rehearsal

£10 includes music and refreshments

Free for under 18s

17:00 Performance

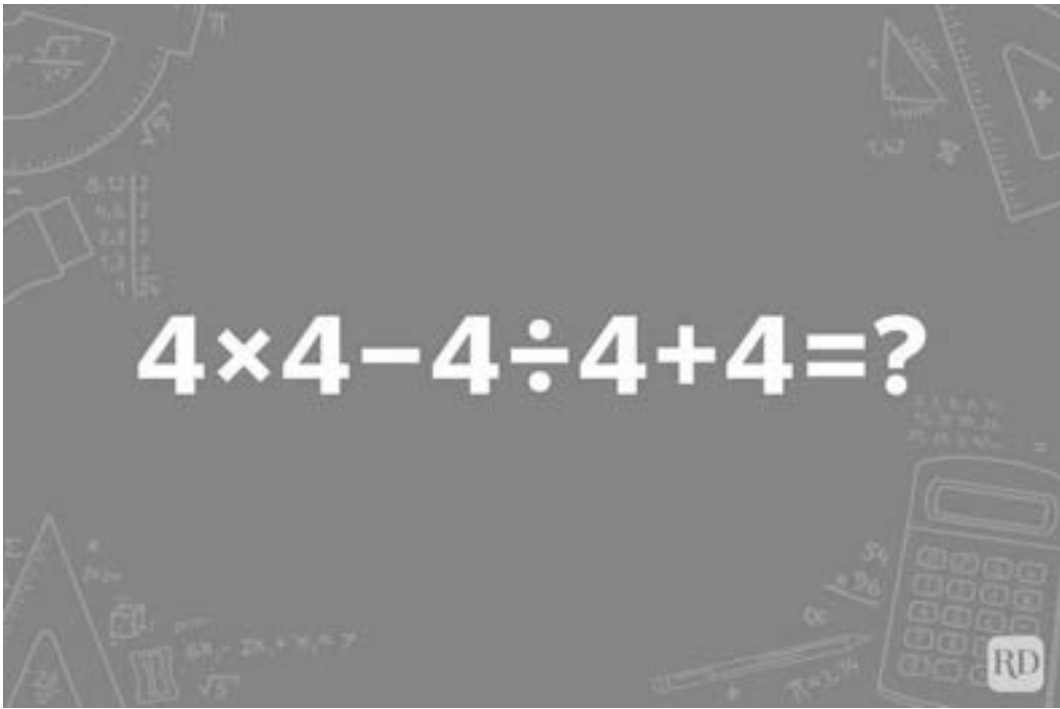
Free entry, with retiring collection

www.mountkellychoralsociety.com

Puzzle Page

Only Geniuses Can Solve This Viral Math Equation - Can You?

You've no doubt seen this math problem (or one similar to it) making the rounds on Facebook: $4 \times 4 - 4 \div 4 + 4$. The equation seems so simple. But math puzzles like this go viral because they're designed to trip people up—and that's exactly why they're so compelling.



June's Evil Sudoku

						9		3
	5			4				
2					1		7	8
		8			7			1
1	3						8	9
6			9			3		
9	8		4					6
				2			9	
7		1						

?

give	get
give	get
give	get
give	get

LE
VEL

?

May Answers

1. Roman numerals. 11 = XI, 10 = X, 9 = IX.
2. If it was his room, the stranger would have had a key, so had no need to knock.
3. World War 1 wasn't called World War I until after World War II.
4. They were married.
5. One hour. You take one, wait 30 minutes, take the next, wait 30 minutes and take the final pill.

Anagram:

Middle row: BUILD

Evil Sudoku

3	6	7	4	9	5	1	2	8
9	1	2	8	6	7	4	5	3
4	5	8	3	2	1	7	9	6
2	8	3	5	1	6	9	7	4
1	9	6	7	4	8	5	3	2
5	7	4	2	3	9	8	6	1
8	2	1	9	5	3	6	4	7
6	4	9	1	7	2	3	8	5
7	3	5	6	8	4	2	1	9

LYDFORD FOXES AFC NEED YOU!!

Sessions for children in Years 3, 4 and 5
(Sept '25 intake)

Our fun and exciting session for our popular "Fox Cubs" are looking for new players to join the team next season.

If you have a son or daughter, who wants to play, but is a bit nervous or shy, then we are the club to join. Our small, friendly local youth football club with a strong family feel, offers fun training sessions for those ages

Want to know more – then contact Mike
on 07792 906 608 or email:

play@lydfordfoxes.com



LYDFORD FOXES AFC NEED YOU!!

Sessions for children in Years 7 and 8
(Sept '25 intake)

Our fun and exciting session for our popular "Foxes" are looking for new players to join the team next season.

If you have a son or daughter, who wants to play, but is a bit nervous or shy, then we are the club to join. Our small, friendly local youth football club with a strong family feel, offers fun training sessions for those ages

Want to know more – then contact Steve
on 07974 799 062 or email:

play@lydfordfoxes.com



Lewdown Grouped Parish Council
Coryton, Lewtrenchard, Marystowe and Thrushelton
Abbreviated minutes Minute No 787 Monday 28th April 2025
of Ordinary meetings held at Lewdown Victory Hall

These minutes are provisional until they signed by the chair at the next meeting of the parish council

1. Apologies for absence - Cllr Alexander
2. Members of the public open forum - none present
3. Declarations of Interest - none
4. Minutes of previous meeting 785 being a true reflection of that meeting were approved and signed by the chair. Motion proposed Cllr McSmythurs, seconded Cllr Mincher, motion carried.
5. Cllr Mott (WDBC) provided a report via email, no questions raised.
6. Planning app. 0953/25/HHO Householder application for proposed 'Catio', an outside enclosure constructed from timber and wire mesh for cats measuring 6 metres (width) x 2 metres (depth) x 2.5 metres (height) to rear of dwellinghouse. 1 Kings Way, Lewdown, EX20 4DQ, Council decision - support - Proposed Cllr Mincher, seconded Cllr McSmythurs, motion carried.
Planning app. 0763/25/HHO Householder application for extension & conversion of existing garage/store. 2 Cross Roads, Lewdown, EX20 4DP
Council decision - object - Proposed Cllr McSmythurs, seconded Cllr Wilkinson, motion carried
Planning app. 1199/25/HHO Householder application for installation of roof mounted photovoltaic panels with associated works. 4 Woods Field, Lewdown, EX20 4FB
Council decision - support - Cllr Mincher, seconded Cllr Perkins, motion carried.
7. Finance - 7.1 Payments were authorised for the following; W.D.B.C. - Bin emptying service winter collections £624.00,
Caroline Harris - Payroll provider annual sub. £177.00 D.A.L.C. Annual subscription £334.62.
Proposed Cllr Mincher, seconded Cllr McSmythurs, motion carried. 7.2 Credit from W.D.B.C re-bin emptying service overcharge £242.11
7.3 Bank detail update. Cllrs have not yet been contacted by the bank, R.F.O. to follow up
8. New Councillors - vacant seats for Coryton and Marystow - no interest yet.
9. Cllr Reports - Cllr Mincher reported no change at the Schoolhayes development, still awaiting a response from WDBC from his letter. Cllr Andrews reported that members of the council have been invited to visit Lewtrenchard Manor when it reopens.
10. Play area updates - Draft lease agreement, planning application. Cllr McSmythurs reported that the lawyers for S.B.G. have been instructed now that the heads and terms of agreement have been approved. Confirmation that the rent for the play area has been set at £1.00 (one pound) per annum. Cllr Perkins confirmed that she had contacted a Lawyer to act on behalf of the council to review the draft lease agreement when it is drawn up.
11. Highways - Cllr Metherell reported that no remedial work has yet been carried out at Lobhill Cross, also new damage has occurred at Thrushelford Bridge. Cllr Yeo reported that recent diversion signs erected in the vicinity of the "Y" junction have not been carefully considered and was thought that they have been positioned in a dangerous location.
12. Correspondence -
From Bere Ferres Parish Council - an email enquiring if L.G.P.C. had experienced similar levels of service from the W.D.B.C. planning department. These include little knowledge of the local area, a decline in site visits and inappropriate consideration of Parish Neighbourhood Plans.
From Milton Abbot Grouped Parish Council - in response to our parish council's letter of 9th December their letter set out the phased schedule of highway safety work that their PC is currently working on including the purchase on new V.A.S. signs
Clear Councils Insurance premium renewal - The R.F.O. reported that the renewal premium had increased from £574 per annum to £728 per annum. The R.F.O. contacted an alternative insurance provider and obtained a quotation for identical cover for the sum of £382.56 + £140 total £522.56. Councillors agreed that the increase from the existing insurance provider was excessive and thus asked the R.F.O. to proceed with the alternative insurance provider.

Date, place and time of next meeting: Annual Grouped & Ordinary Meetings - 19th May at Lewdown Victory Hall, 7.30pm

This the eight in this series of excerpts of Stowford's school **Book of Punishments**, on this page it seems the latest craze is throwing stones and its not just the boys! Peter van Delft



School Photograph 1938

Left: Miss Allen (headmistress) Right: Miss Boyle (teacher)

Front Row (Left to right): Bill Wickett; John Wickett; Norman Wickett; Brian Cobbledick; Donald Woodridge; Bill Woodridge; Eric Frise

Date	Name of Child	Age	Offence	Amount of Punishment
1942 October 10 th	Donald Woodbridge Brian Cobbledick Cedric Wise Norman Wickett Roger Wickett John Ryder	12 12 13 10 9 9	Jumping over school hedge into road, throwing stones & causing horse wagon to bolt.	Three strokes of cane on each hand
1944 July 25 th	John Cheeseman Roger Wickett	8 11	Fighting and hurting Eric Frise at dinnertime	Two strokes each hand Three strokes on each hand
1944 September 12 th	John Cheeseman	8	Throwing stones on way home and cut M.N's temple	Five strokes on each hand
1944 September 20 th	Roger Wickett	11	Rude behaviour yesterday afternoon during my absence in infant's room	Six strokes on each hand
1945	Blank		Blank	Blank
1945 May 7 th	Joan Bond Jean bond Phyllis Wickett Monica Cleave	12 9 8 10	Late for school because throwing stones at birds nests	Two strokes on each hand
1945 November 23 rd	Francis Earle	10	Continuous impudence and now after reproof in lines, grinning	Six strokes each hand

Open GARDENS

at Coombe Trenchard

Sunday 6th July 2025, 11am - 4pm

Wander through stunning **Edwardian gardens**,
enjoy **live music** and **theatrical performances**

**JOIN US FOR THE
GREAT CREAM TEA
DEBATE!**

Is it jam or cream first?

History and hilarity collide with the
Packhorse Players in this delightfully
British showdown
Performances at 12.30 & 2.30pm

Entrance £6
Dogs Welcome

Plants
Refreshments
Cream Teas
Raffle

PROCEEDS SUPPORT

Devon Freewheelers
– life-saving blood bike services

St Peter's Church, Lewtrenchard
– preserving our historic
local church

Coombe Trenchard, Lewtrenchard, EX20 4FA | 01566 783179 |

www.coombetrenchard.co.uk | sarah@coombetrenchard.co.uk

FAMILY FRIENDLY



MID SUMMER



MUSIC MASH UP !

Special Performances

DJ

HAZE

ONETEE

**THE
UP!**

BAR
BBQ

ENTRY
ADULTS £5
12-18 £2.50
11 AND UNDER FREE

20-06-25
7PM -12AM

LEWDOWN VICTORY HALL

IN AID OF LEWTRENCHARD SCHOOL FLS

SUPPORTED BY

HOLSWORTHY ALES
THE COFFEE POT
THE CLOVELLY INN

Stowford Parish Council



Abbreviated minutes of Annual & Ordinary meetings held on 8th April 2025

These minutes are provisional until they are signed by the chair at the next meeting of the parish council.
Meeting No 733

Annual Parish Meeting

1. Chairman's Welcome Cllr Leroy St Louis welcomed everyone present.
2. Apologies - Cllr Law.
3. Chairman's Report, a summary of the previous year's business - The chair provided a detailed summary of the council's past year business activities, including more use of the council's social media Mailchimp and Facebook. The purchase of a table tennis table and equipment to help with the residents mental and physical wellbeing, a second table was freely donated by a parish resident and much welcomed by the council. Dog fouling and nuisance dogs off leach was reported to the council, this problem was dealt with by Cllr Edmonds of WDBC who instructed its M.L.O. to monitor and deal with the problem, this current issue is still on-going and remains with the M.L.O. Whilst speeding vehicles have been reported through the village it was found that there was no case to answer. An Openreach meeting was arranged to help residents understand the analogue switch-off due in 2027. In conclusion the council continues to work with and for its residents and appreciates the support of its local volunteers, businesses and organisations helping to improve everyone who lives in the parish of Stowford.
4. Parishioner's open forum
Parishioner's opportunity to ask councillors questions and discuss matters of concern. Two members present, no issues raised.
5. New councillor's
Parishioners invited to join. Mrs Allana Chick and Mr Nigel Terry asked if they could become Councillors of the parish. The chair welcomed both of their requests and motioned to accept both of their applications. Cllr Lorna St Louis proposed Allana Chick and Cllr Govett seconded, all were in favour, Cllr Alexander proposed Nigel Terry and Cllr Leroy St Louis seconded, all were in favour.
The clerk will inform WDBC and provide register of interests forms to both new councillors.

Meeting closed 7.55pm

Ordinary Meeting - Opened at 7.56pm

1. Dispensations & declarations of interest - none
2. Members of the public open forum - no one present
3. Minutes of previous meeting 732 were signed by the chair as a true and accurate record of that meeting, proposed Cllr Alexander, seconded Cllr Govett, motion carried.
4. Review of Standing Orders - Cllr Govett proposed to revise the standing orders for paragraphs 5F and 5G, seconded Cllr Terry, motion carried.
5. Dog fouling, nuisance dog(s) off leads. - The chair informed that it had come to his attention that a re-occurrence of the issue had taken place, therefore the M.L.O. had been asked to patrol the area again. Cllr Edmonds confirmed that the M.L.O. had been contacted and will initiate patrols again.

Meeting closed 8.03pm

Date time & place of next meeting - 13th May 2025 - 7.30pm at Stowford Parish Hall

Thy Kingdom Come 2025

29th May -8th June

A worldwide Christian event :

Praying for people we know
to join our church family and share our faith.

Based on the Lord's Prayer

Please pick up a Novena leaflet to guide your prayers

In Preparation:

The North Tamar Mission Community is holding a

Gathering for Prayer

at St. Mary's Lifton,
every Thursday for 5 weeks
starting 8th May. between 6 and 7pm
Everyone very welcome. Tea and Cake!!

Celebration Service at Exeter Cathedral
Pentecost Sunday 8th June
6pm.

For further information contact: nabntmc@outlook.com

The North Tamar Mission Community



RED SPIDER COMPANY

Did you enjoy getting involved in your local Am-dram society before COVID hit? Or at school?

Have you always wanted to give acting a go?

Are you more tempted to join our backstage crew?

Red Spider are actively looking for new members ...

Performers, support crew, tech and set builders are needed to join the group, alongside existing members. A read-through and auditions for the autumn show, to be performed in early November 2025, is coming up.

* Do I need any experience?

No. Old hands and newbies are all welcome.

* Are there lots of rehearsals?

We know we all have busy lives! We generally rehearse on Friday evenings and Sunday afternoons, but rehearsals are set according to cast/hall availability.

* I don't want to act, but would love to get involved and meet new people....

We need directors, sound and lighting operators, rehearsal assistants, props sourcing/making, and support crew.

A read-through and auditions for our next show will be held on Sunday 8th June, at Bratton Clovelly School Rooms at 2pm.

We are looking for a minimum of 2 men and 4 women with doubling (or 4 m, 6f without) for this show, which is a family saga over the years of 1940/41 and 1990s. The cast playing ages range from 18 to 80.

Backstage and technical crew also needed.

Why not get in touch and find out a bit more?

RSYTheatre@gmail.com or follow us on Facebook

COFFEE MORNING

at St Peter's Church, Lewtrenchard

Saturday June 21st 2025

10.30-12noon

Learn more about delivering

'Shoe Boxes'

With talk and slides from:

Mrs Karen Lloyd

who delivered shoe boxes to Romania

in November 2024

Milton Abbot Grouped Parish Council

Please see our website for lots of information about Milton Abbot, Chillaton, Bradstone, Dunterton and the surrounding areas, along with a list of the local Parish Councillors

www.magpc.co.uk



For bookings and enquiries contact Julie Chick Tel: 01566 783223

Email: stowfordparishhall@gmail.com

A Defibrillator is located in the porch - Postcode EX20 4BZ

Charity No: 1020031



Gardeners



Enjoy the Winners Circle
For that champion veg
Collect your own FREE
Proper Well Rotted Horse manure

01566 783 515

lydvalefellponies@gmail.com

Free Bags Available!
Trailers welcome!



The Clovelly Inn Bratton Clovelly



Torben, Suzy, Alex & Thomas
look forward to seeing you
01837 871447

Apples Juicing

Have you got too many apples?
We can crush them, press, bottle
& sterilise for Juice

Contact - George Bellamy
Woolacott Farm, Lewdown

01566 783266

TOP SOIL

TOP QUALITY TOP SOIL FOR SALE

SEA SAND

ROAD PLANINGS

VARIOUS DECORATIVE GRAVEL CHIPPINGS & BUILDING AGGREGATES

No VAT

01566 784645 OR 07771 823414

Tim Dixon

**Domestic Plumbing &
Bathroom Fitting**

01566 784028

07903535881

careful & reliable service

timdixonplumbing.co.uk

Megan's Home Cleaning!

**10+ years in the
Business**

**Earth Friendly
Cleaning solutions
Weekly & bi-weekly
Slots available**

Tel: 07955 805 271

MARK CHIVERS - SOLE TRADER

Highly skilled carpenter with over 40 years
experience, including but not limited to:

INTERIOR

**KITCHEN • BATHROOMS • BEDROOMS
FLOORING • DOORS • WALLS**

EXTERIOR

**FASCIA & SOFFIT • GUTTERING & DOWNPIPE
WINDOWS (including sash repairs) • FENCING**

FREE ESTIMATES - UNDER NO OBLIGATION

The best price and best service for your budget
Please Do Not Hesitate To Contact Me With Any Enquiries:



CARPENTRY & JOINERY

**Mobile: 07804 104812
(8am-7pm)**

**Home: 01566 783743
(9am-5pm)**

**Email any time:
m.c.carpentry@outlook.com**

COLOUR PRINTING & COPYING

This service is available for a minimum of 10 copies at a charge of 5p/single or 7p/double sided copy.

For sale Copier Paper £4.75/ream

The Community NewsLink purchases its paper in bulk and as such is able to access competitively priced materials. We can currently offer our readers copier paper for the special price of £4.75 per ream, a vast saving on High Street prices. We recommend you phone to check availability and arrange a convenient time to collect.

Contact Terry Southcott
Fairview Bungalow, Lewdown
01566 783079 or 07831309666

All proceeds go to:
Lewdown Residents Association
who produce Community NewsLink

ROGER WONNACOTT

GROUND & GARDEN MAINTENANCE

- ▲ GENERAL GARDEN MAINTENANCE
- ▲ SERVICES RENEWED & REPLACED
- ▲ LEAK REPAIRS & TROUBLESHOOTING
- ▲ MOLE / GRUNDOMAT WORK UNDERTAKEN
- ▲ MOLE & COMPRESSOR AVAILABLE



- ▲ COMPLETE JOB PRICING OR HOURLY RATES
- ▲ FULLY INSURED & BASED NEAR LAUNCESTON

07919 912776
rwonnacott@hotmail.com



supplier of
HARDWOOD LOGS
cut and split to your
requirements
Tel. Colin Bennett:
01822 487259
Mobile:
07523172369

Lewdown Victory Hall

Bookings contact
Roy Stacey
on 01566 783267



Broadbury Landcare

All aspects of Garden Maintenance
and Landscaping

Fully Qualified Fully Insured Free Estimates
18 Years Experience

Andrew Barton 07532 216216

Raw Meat Animal Feed For **Dogs & Cats**

Convenient blocks *Frozen to preserve*

Natural, just meat or meat and bone

No Preservatives, No Artificial Colouring's

(both can be harmful to your animal)

Raw Rations Plus



For information or to order

website: **www.rawrationsplus.co.uk**

Phone: **07831309666 or 01566783079**

Email: **sales@rawrationsplus.co.uk**

Post: Fairview Bungalow, Lewdown,
Okehampton, Devon EX20 4DL



A C WORTH BUILDERS



GENERAL BUILDERS, DECORATORS,
PLUMBING & HEATING,
PURPOSE MADE JOINERY etc.

Kirtonia, Vale Down, Lydford DEVON EX20 4BB

Email: acworthbuilders@aol.com



Tel: 01566 783282
Keith: 07778 471648
Andy: 07867 524515



RED SQUIRREL TREECARE

Chillaton - Devon
Tree Removal - Pruning

Hedge Cutting- Seasoned Firewood

Low impact/small scale Forestry

call Matt on 01822860651

e:info@redsquirreltreecare.co.uk



Why Get Wet?



White Umbrellas

For

Your Wedding



To Hire

Tel: 01566 783342

All Proceeds to the Gurkha Welfare Trust

T C M Plumbing



Burst pipes? Tap dripping? Overflow running? Valves Leaking?

Radiators not getting hot? Gutters blocked or leaking?

Based locally at Inwardleigh we cover the surrounding areas

Helping you with your plumbing needs no matter how small

Contact Tim Morgan

Tel: 01837 810599

Mobile: 07838 901803

Or visit our website www.tcmlumbing.org.uk
to see what we can do for you



Blue Lion Inn, Lewdown

Charlie, Nicky, Charlotte, Georgia, Jonty & Alfie
Welcome you to our Family Friendly Pub

01566 783238



*Public House offering good food, real ales,
live music, pool, skittles, darts and BT Sports*

*For upcoming live music & quizzes etc. follow us on Facebook
Search for 'blue lion inn'*



Mobile Foot Care

Sally Isaac S.A.C. Dip. FHPT/FHPP



*Gentle and professional
foot care
in your own home*

If you suffer discomfort from

- corns
- cracked heels
- callus
- ingrown toenails
- thickened/tough nails

*or just have difficulty cutting
your toenails then
please ring me*

I'll come to you!

Telephone Sally
07961 076 168

WELCOME TO
LOBHILL FARMHOUSE
BED AND BREAKFAST
and HOLIDAY COTTAGE



Lobhill Farmhouse, Lewdown
EX20 4DT

Tel: 01566 783542
07817 244687

Jane Colwill

www.lobhillbedandbreakfast.co.uk

CBL STOVES

The Showroom, Unit 5
Red Post, Bude, Cornwall
EX23 9NW

01288 381852
carl@cblstoves.co.uk
www.cblstoves.co.uk



Registered
Heating
Business



- Stainless Steel twinwall flues
- Chimney Lining
- Iskoern Pumice lining
- Fireplace alterations
- Stove Installations
- Wood, Multifuel, Gas & Electric Traditional & Contemporary Stoves & Fires
- Chimney Rebuilds
- Slate, Granite & Glass Hearths
- Wood & Ceramic beams & surrounds
- Floating Shelves



R Mears & Sons

Chimney Sweeps & Stove Installation

Established over 30 years

Vac Brush. Full CCTV investigations.

Pots, Cowlings & Bird Protection fitted. Chimneys Lined.

Solid Fuel Appliances, Rayburns, Woodburners,
Stoves, etc serviced. Fully Insured.

Tel: 01840 261221 Tavistock: 01822 664554

Mob: 07737 533392

www.sweepdevon.com



GRAHAM TOWNSEND GROUNDWORKS

WATER DRAINAGE & GROUNDWORK SPECIALISTS

**WATER LEAKS & RENEWALS
SEPTIC TANKS INSTALLED**

**DRAINS CLEARED
TREATMENT PLANT
ALL FENCING WORK
DEMOLITION**

**GROUNDWORKS
DRAINS REPLACED
MOLING (No Dig)
PATIOS DRIVES**

FREE ESTIMATES

TEL: 01837 657687 / 01566 783788

MOBILE: 07866 465093

email: info@gtownsendgroundworks.com

Roger's

**Painting & Decorating
Services**

**Interior & Exterior Work
Traditional & Modern Techniques
City & Guilds Qualified
30 years Experience**



Mobile: 07783 819171

Septic Tanks

Emptied

Phone: 01805 601203

Mobile: 07831 241531

**Leave a message, we will re-
turn your call, or email:**

hearnhaulageltd@outlook.com

**Small Lorry
Available**

Card payment accepted

Hearn Haulage Ltd



fabric and furniture

Upholstery Service

Collection & Delivery Available

 @fabricandfurniture

 fabricandfurniture

 Linda 07484 093494

 sales@fabricandfurniture.co.uk

www.fabricandfurniture.co.uk

A.J.NASH BUILDERS LTD

Andy Nash

General Builder & Decorator



07769728425

01566783274

sarahnash@btinternet.com

K. Moore & Son. PLANT HIRE

Specialising in all sitework,
drives, sand schools, septic tanks
hedging and all types of farmwork.

Royal Oak, Newton Down, Lifton

Tel:- 01566 784722

07785 540494



07734 956925
8- Seater Vehicle Available

Anytime - Anyplace - Anywhere

AIRPORT • TRAIN STATION
SHOPPING • DOCTOR

Prompt Reliable Honest
FAMILY RUN COMPANY
24/7 365 days

Chair Yoga for Seniors

with Yogajeanie

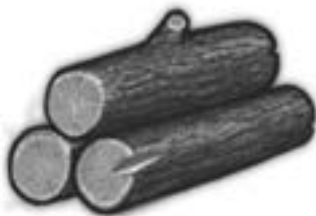
Chair yoga helps with
Muscle toning
Reduced stress levels
better breathing habits
better sleep
overall sense of well-being
It's fun too!

Interested?
Just come along in comfy clothing

At Lewdown Village Hall
Thursday's
from 10:00 am -11:00 am
£7 per class

For more information contact
jeanharris50@hotmail.com
Mobile 07929 278788

LOGS



SEASONED
HARD WOOD,
SPLIT TO YOUR
REQUIREMENTS.

DELIVERED
LOCALLY

07942 073204
the2relics@gmail.com

PLUMBER

EST 40 Years

Lewdown
& District

Tel: 01566 783562

Mobile: 07731878510

TINHAY

BUILDING SUPPLIES LTD

Supplying quality building materials to the trade and DIY

**We're bigger
than you think**

Lifton

Tinhay Mill Industrial Estate, Tinhay, Lifton, Devon PL16 0AH

Telephone: **01566 784385**

Email: lifton@tinhaybuildingsupplies.co.uk

Launceston

Newport Industrial Estate, Launceston, Cornwall PL15 8EX

Telephone: **01566 771989**

Email: launceston@tinhaybuildingsupplies.co.uk

Tavistock

Pixon Lane, Tavistock, Devon PL19 8DH

Telephone: **01822 619509**

Email: tavistock@tinhaybuildingsupplies.co.uk

FREE LOCAL DELIVERY  

www.tinhaybuildingsupplies.co.uk



**QUALITY OIL FIRED APPLIANCE
MAINTENANCE AT
COMPETITIVE PRICES**

CALL MARK

 **0781 4976 076 OR 01566 784298**

MARKSTONE GRANITE

We don't just sell granite.....

- * Slate: Flooring, Worktops, Sills, Hearths, Tables & Benches.
- * Oak Beams, Sleepers, Barrels & Boards (perfect for shelves)
- * Natural Stone Paving & Cobbles.
 - * Porcelain Paving & Flooring.
 - * Reclaimed Bricks
- * Granite Quoins, Cobbles, Lintels, Steps, Plinths, Posts & Troughs



Tel. 01566 784289 Lifton Devon.

www.markstonegranite.co.uk



TAVISTOCK STOVES

& FIREPLACES

**Woodburning, Multifuel,
Electric & Gas Stoves.**



In our Showroom:

- Live working displays
- Maintenance products – rope, bricks, glass, cement, paint etc
- Fireplace accessories



Our Services Include:

- Free site survey.
- Full installation service.
- Repair & maintenance.



4 Vigo Bridge Road, Tavistock. PL19 0EY

Tel. 01822 487700 sales@tavistoves.co.uk

www.tavistoves.co.uk

S H Joinery

Granite and Quartz worktop cutting and fitting

Cut roofs

Traditional A frames

Kitchen fitting

External bi fold doors

Joinery



Steve Hunt

07974 799062

shjoinery@hotmail.com



Caroline Harris MIAB
Owner & Bookkeeper

Tel: 01566 783 502

Mob: 07866 953 708

cmhbookkeeping@btinternet.com

www.cmhbookkeeping.co.uk

- + Bookkeeping
- + Self Assessments
- + Accounts Preparation
- + VAT Returns



Lewdown YFC Charity Big Breakfast

Saturday 14th June 2025

Lewdown Victory Hall

9am - 1pm

**Raising funds for our chosen charities- Mind,
Devon Air Ambulance & Chemotivation**

Small Breakfast £8

Large Breakfast £10

Cake sale also available

Cash only

