

THE AREA MAGAZINE FOR LEWDOWN, CHILLATON, CORYTON,  
STOWFORD, MARYSTOWE, THRUSHELTON, LEWTRENCHARD

February 2019

The magazine for all that's going on in your area

# Community



# Newslink

PUBLISHED BY THE LEWDOWN RESIDENTS ASSOCIATION,  
REG. CHARITY NO. 1071808

FUNDED BY THE ADVERTISERS, SPONSORS, MEMBERSHIPS AND AREA CHURCHES  
ALSO SUPPORTED BY GRANTS FROM DEVON COMMUNITY FOUNDATION AND  
LLOYDS TSB FOUNDATION FOR ENGLAND & WALES

# Lewdown Grouped Parish Council

The council is looking for someone to do the grass cutting at the area known as 'The Ramps' and also at the War Memorial in Lewdown. We require up to ten cuts per year depending on weather conditions. Please provide your quotation by email to; [lewdowngpc.clerk@gmail.com](mailto:lewdowngpc.clerk@gmail.com) or by post; Peter van Delft (Clerk) Portgate Chapel, Portgate Lewdown, Okehampton, EX20 4PZ

## Stowford Parish Council



Stowford Parish Council are looking for additional councillors, if you are looking for an interesting and rewarding experience and would like to put something back into your local community then please contact the clerk to learn more.

We look forward to hearing from you.

Contact: Parish Clerk, Telephone: 01566 783023, Email: [stowfordclerk@gmail.com](mailto:stowfordclerk@gmail.com)

## LEWDOWN VICTORY HALL SNOWBALL WHIST DRIVE

Saturday 9<sup>TH</sup> February at 8.00pm

Contact Colin 01566 783279

### Lewdown



**Located in the roadside porch of the Blue Lion (EX20 4DL)**

Please note it is not recognised by 999 calls if more than 200 meters away from it.

When ringing 999 they will access code to open box.

### Chillaton

**Located in the Village Square on the wall of No. 1 Barn Cottages (PL16 0HS)** we do not have any further details for this unit. The 999 operator will be able to give directions for its use.

# The Community Newslink

A MONTHLY MAGAZINE PROVIDING NEWS, INFORMATION AND ITEMS OF INTEREST FOR THE AREAS OF LEWDOWN, CHILLATON, CORYTON, STOWFORD AND MARYSTOWWE, THRUSHELTON, LEWTRENCHARD

Established January 1999  
Issue No. 223 February 2019

**Editor**

**Andrew McCarthy**

**3 Reddicliffe Mews, Lewdown, Devon. EX20 4BQ**  
**Telephone 01566 783093 E-Mail mccarthy.andy@gmail.com**

**Production, Distribution and Delivery Helpers.**

Mrs C. Bickell, Mrs Martin, Mr. T. Nash, Mrs R. Squires,  
Mrs A. Westlake, Mrs M. Rolfe, Terry Southcott,  
Coppers Stores, Keith Turner and Ryan and Jessica Kingdom

**All news, photographs, reports, events etc. for the Newslink need to be handed in to the Editor by 15th of the preceding month.**

We welcome your articles / items / advertisements. Though we do our best, we cannot guarantee to publish all that is sent to us, as some things will not reproduce in a good enough quality.

DONATIONS TOWARD THE COST OF PUBLISHING THIS MAGAZINE CAN BE GIVEN TO ANY COMMITTEE MEMBER OR CONTACT:

LRA CHAIRMAN: TIM NASH (TIMNASH682@BTINTERNET.COM)  
LRA TREASURER: SARAH NASH (SARAHNASH@BTINTERNET.COM)

YOUR SUPPORT WOULD BE VERY MUCH APPRECIATED

★★★  
 ★ **Could you help with delivering the Newslink?** ★  
 ★ We always welcome new volunteers to join our excellent team of ★  
 ★ helpers that deliver the Newslink every month. If you're interested ★  
 ★ please to contact us (details on page 3) ★  
 ★ **Don't forget that you can always get copies of the Link** ★  
 ★ **in the Village Shops and in the local Churches, or** ★  
 ★ **register with us to be sent the PDF version** ★  
 ★ **(send an email to us at Lewdownra@gmail.com)** ★  
 ★★★

Cover Picture - Spring Narcissi (image from www/freefoto.com)



# Lew Trenchard Primary School



Monday to Friday 9.15am to 3.30pm  
2-5 year olds

Please phone for availability.

Early Years Foundation Unit with plenty of safe outdoor space.  
We accept 2gether funding for 2 year olds and Early Years Education  
funding for 3 year olds.

## Baby / Toddler Session

Monday mornings 9.15am to 11.15am

Justine welcomes you to come and join her in the school hall for lots  
of fun activities (some messy) and plenty of singing. A great  
opportunity to meet other parents / carers.

£2.00 per session – please bring your own snack.

For more information contact the school office on 01566 783273.

[www.lewtrenchardschool.org.uk](http://www.lewtrenchardschool.org.uk) Email [lewtrenchardadmin@andaras](mailto:lewtrenchardadmin@andaras)

## **COLOUR PRINTING & COPYING**

This service is available for a minimum of 10 copies at a  
charge of 5p per single copy or 7p per double sided copy.

## **FOR SALE COPIER PAPER**

**£3.50 per ream**

The Community Newlink purchases its paper in bulk and as such is able to  
access competitively priced materials. We can currently offer our readers  
copier paper for the special price of £3.50 per ream, a vast saving on High  
Street prices. We recommend you phone to check availability and arrange  
a convenient time to collect.

Please Contact: **Terry Southcott, Fairview Bungalow, Lewdown**  
**Phone 01566 783079.**

All proceeds will go to The Lewdown Residents Association  
and The Community Newlink.

## *Dear Readers,*

by the time you read this Christmas and new year will be long gone, but as I write, some of our decorations, and the trees, yes we have more than one, still technically have 3 days before they need to be taken down.

For Christmas the present Mrs Nash gave me a DNA testing kit. She is fairly sure the last surviving Neanderthal is possible alive and kicking and living in your midst, she thinks this could be the reason I am so reluctant to use all these new fangled devises that keep being pushed at us.

When I went to Lewtrenchard primary school a pen and paper was all you had to use, but on the plus side we did get free milk every day, and a chance of the slipper across your backside, happy days.

We did spend some quality time with our daughter and husband over the new year, the ex Miss Nash has started lambing, or should I say the sheep have so she is a happy bunny.

The Coca-cola company is the largest consumer of sugar and vanilla in the world, this fact won't save your life but I found it quite interesting.

Anyway will close now as if I don't the wife will eat all the monkey nuts, just leaving me with a pile of shells.

Best wishes for the coming year from your chairperson.

PS, I have saved all the best jokes from the crackers so things are looking up for you all.

This one was told to me though by someone who should know better:-

Have you heard about the man who died face down in a bowl of muesli?, he was pull under by a very strong currant.

Three weeks ago I sent my hearing aids in for repair, I've heard nothing since.

## **Lewtrenchard WI,**

Monday, 14<sup>th</sup> January, 2019, Lewdown Victory Hall.

Cathie opened the first meeting of the New Year welcoming guests, and members new and old.

This first meeting was spent discussing the proposed NFWI Resolutions to go forward to the 2019 NFWI AGM.

There were 6 for members to vote on with Cathie taking us through them in turn and highlighting pros and cons and asking for discussion from members. They were as follows:-

1. Improving Plant Biosecurity in the UK
2. Trees-Improving the Natural Landscape
3. Pelvic Floor Education
4. Suffering in Silence: why we need to end the taboo around menstrual health
5. A Call against the Decline in Local bus Services
6. Don't Fear the Smear.

At the end members were issued with ballot papers to vote on their preference with these being sent onto DFWI.

Tributes were paid to Val Bugden Causey whose recent death left all saddened. She was a charismatic champion for the WI and will be missed. The money raised for her treatment is going towards research. Her funeral will be on the 5<sup>th</sup> February in Launceston at 11am. See local papers for details.

Flower of the Month- Joyce Vanstone

Competition- A3 Collage Fashion Through the Ages-Cathie Slocombe.

Next Meeting to be held on Monday, 11<sup>th</sup> February, 7pm Lewdown Victory Hall. Speaker is Sylvia Crocker who will be giving us a cookery demonstration. Competition: Bread Pudding. All Welcome.

### **Lewdown Victory Hall**

**Bookings contact Esme or Roy Stacey**

**On 01566 783267**

# Magic Martin



*Unique stage Magic Show*

## Mr Eerius



As performed at the Apollo Theatre London

Lewdown Victory Hall

### Friday 8<sup>th</sup> March



## 7 pm

**MR EERIUS**  
MAGICAL SPECIALITY ACT



Interactive fun quiz with top prize!

### Tickets £8 per person

Refreshments Pasty / Sausage Roll (extra cost), Licensed Bar.

More info 01566 783273 Lew Trenchard Primary School

Tickets available – Coppers Shop, Blue Lion, Clovelly Inn and School.

Raffle !!!

# The Blue Lion, Lewdown

Charlie, Nicky, Charlotte, Georgia, Jonty & Alfie  
Welcome you to our Family Friendly Pub

★★★★★★★★★★★★★★★★★★★★★★★★★★★★★★★★★★★★  
 ★ **Evening meals are now being served evenings** ★  
 ★ **Tuesday to Saturday** ★  
 ★ **Now Available - B&B!!** ★  
 ★★★★★★★★★★★★★★★★★★★★★★★★★★★★★★★★★★★★



Pool - Darts - Skittles - Sky Sports

01566 783238

*For upcoming live music & quizzes etc follow us on Facebook  
Search for 'blue lion inn'*

# MARKSTONE GRANITE

*For all your Renovation, Conversion and Landscaping needs!*



**Slate:** Flooring, Sills & Hearths. **Reclaimed Bricks**

**Granite:** Building Materials & Garden Features.

**Oak:** Beams, Natural Curved Lintels, **Oak Barrels.**

**Natural Stone Paving, Sleepers,** and lots more!

*In our showroom: Local Pottery & Paintings. Rustic Oak Fire surrounds, Coffee Tables, Benches & chopping boards handcrafted in our workshop.*

**Tel. 01566 784289**

**[www.markstonegranite.co.uk](http://www.markstonegranite.co.uk)**





Granite and Quartz worktop cutting • Doors • Staircases •  
Kitchens • Cut roofs • Windows • Sash Windows •  
External bi-fold doors •  
Machining service available.  
Bespoke joinery for completely unique pieces.

**Steve Hunt**

**01566 783228**

**07974799062**



**Caroline Harris**  
Bookkeeping Services



**Caroline Harris** MIA B

*Owner & Bookkeeper*

**Tel:** 01566 783 502

**Mob:** 07866 953 708

cmhbookkeeping@btinternet.com

[www.cmhbookkeeping.co.uk](http://www.cmhbookkeeping.co.uk)

+ Bookkeeping

+ Self Assessments

+ Accounts Preparation

+ VAT Returns

## DOMESTIC HELP

Traditional help around the home,  
Help with cooking a meal, baking  
and light gardening.

self employed

Food safety and hygiene cert  
catering level two

Allergy awareness training

Insured

Tel 01566 783514

email  
laurrainebennett@outlook.com

fb/BakingUPCompany

*Ian Smith Photography*  
*Landscape*

*Portrait*

*Panoramic Landscapes*

01566 779348

07768 312371

*www.iansmithpanoramics.co.uk*  
*email. smithian840@gmail.com*



## Evans Plumbing and Heating

*Based in Lydford Robbie Evans is your local Plumbing and Heating Engineer*

- Installations of Boilers
- Servicing, Maintenance and Repairs
- Central Heating Systems
- Bathrooms and Kitchens
- Blocked Drains and Burst Pipes
- 24hr Call Outs
- FREE No Obligation Quotes

**01822 820884**  
**or 07794053150**

*evansplumbingandheating@outlook.com*



## Stowford Parish Hall Hire Charges 2018

£3 per hour (Special rates for users of over 30 weeks per year £2 per hour)

Parties, Wedding, Funerals £20

General and Euro Elections £120

Tables £2 each (plus £20 Deposit) Any number of Chairs 25p each

**Contact Julie Chick on 01566 783223 for bookings and enquiries**

# LEWDOWN YFC CHARITY

## TRACTOR RUN

17<sup>TH</sup> MARCH 2019

### LEWDOWN VILLAGE HALL

- TRACTORS TO BE THERE FROM 10 AM- LEAVING AT 10.30AM - BACON BAPS/TEA AVAILABLE BEFORE
- 2 COURSE DINNER UPON ARRIVAL BACK (ANYONE WELCOME)
- £10/TRACTOR
- £5 FOR PASSENGERS/GENERAL PUBLIC (WHO WOULD LIKE FOOD)
- IF YOU WOULD LIKE TO BOOK CONTACT BECKY 07415064989



In aid of

CANCER  
RESEARCH  
UK

We're  
supporting  
*mind*  
for better mental health



# Soupa Troopers

All welcome to this community event



**2019**

**Wednesday January 9<sup>th</sup>**  
**Wednesday February 13<sup>th</sup>**  
**Wednesday March 13<sup>th</sup>**  
**Wednesday April 10<sup>th</sup>**

**From 12.30pm in Lewdown Victory Hall**  
**Soup and a Bread Roll, Tea or Coffee - £3**



Followed by conversation & games  
(Optional)



S Hedger

## Best Wishes for 2019 from everyone at Soupa Troopers.



*Soupa Troopers enjoying the festive fayre at December 2018 get together.*

Soupa Troopers is a community event run monthly, by a group of volunteers, at Lewdown Victory Hall (see separate advert) for anyone who wishes to come for a warm soup lunch, convivial company and maybe stay for a chat and board games' afternoon. It is open to everyone.

Although it was never envisaged we would make profits each month after paying soup makers and purchasing other items, since its inception in October 2016, we have been able to give £1550 to the Victory Hall – the latest £950 of this was given at the most recent Victory Hall AGM in January 2019. This has enabled us to repay the Victory Hall for allowing us rent free accommodation, for which we are most grateful. Thank you to the Victory Hall management.

Anyone who would like to join us just come along and you will be made very welcome. You don't even have to do the washing up unless you really want to!

We look forward to seeing you at the next Soupa Troopers on Wednesday February 13th 2019 – Soup served 12.30pm

# BROADWOODWIDGER LOCAL HISTORY SOCIETY

## **Sittaford Stone Circle: its Discovery and Context**

Illustrated Lecture by  
Dartmoor Historian  
ALAN ENDACOTT

In 2007, Alan Endacott, formerly Curator of the Museum of Dartmoor Life in Okehampton, discovered a long-buried and forgotten stone circle on an exposed ridge near Sittaford Tor. His illustrated talk explains his theories regarding the layout of ritual landscapes on northern Dartmoor and the context of the discovery of the Sittaford circle.

MONDAY 18th FEBRUARY 2019 at 7 p.m.

BROADWOODWIDGER COMMUNITY HUB  
(by Parish Church - parking on village green)

TICKETS (to include tea/coffee) : £2 members, £4 non-members

### **Helping Hands**

At their Christmas Party on 15<sup>th</sup> December 2018 clients and carers of the Tavistock Memory Cafe heard about donations made earlier in the autumn by supporters in our area. The North Cornwall Motor Club at their autumn rally on 19<sup>th</sup> October 2018 collected £100 for the Memory Cafe through contributions made by participants at their main staging post at Marystowe. And the Young Farmers at their Pasty and Cider Quiz in September in Lewdown collected £387 for the Memory Cafe.

Expressing their gratitude for these generous donations, the Memory Cafe Board of Trustees noted that the continuing support of so many local community organisations was making it possible for services to those living with dementia and their carers to be extended in all sorts of modest but constructive and useful ways. They look forward to the New Year much encouraged by this sort of practical and spontaneous local support.

*Alan Payne, Vice Chairman, Board of Trustees, Tavistock Memory Cafe CIO*



## **FORD COTTAGE CHILDMINDERS**

Kathy Lawrence & Jo Kingdon

Over 10 years Experience

OFSTED Rated Outstanding

We will cater for your Childcare needs

Ages 4 months—14 years

**7.30am - 6.00pm weekdays**

We accept the Government funding for 3 year olds  
and 2gether funding for eligible 2 year olds.

As little or as much as you need.

We operate a 'Pay as you go' system - No charges for missed days

TEL: 01566 783317      Email: [childminders@hotmail.co.uk](mailto:childminders@hotmail.co.uk)



## **K. Moore & Son. PLANT HIRE**

**Specialising in all sitework,  
drives, sand schools, septic tanks  
hedging and all types of farmwork.**

Royal Oak, Newton Down, Lifton

**Tel:- 01566 784722**

**07785 540494**

## Lewdown YFC report;

We kicked off the new YFC year in September with a fantastic dinner and dance at Trethorne with 140 members and parents in attendance. we then had our new members evening with 25 new members joining bringing our membership total to over 70 members.



Since September members have taken part in various speaking and sports competition and carnivals. October kicked off our charity fundraising as we held our cider and pasty quiz where we raised £357 for Tavistock memory cafe.



In November we presented cheques to last years charities where we gave £980 each to Devon air ambulance and Lewdown helipad and £425 to cancer research. We also had a tour at Hamblys in Launceston where we had several members attend and December brought our

annual Christmas poultry bingo which was fabulously supported as usual- thank you to all who came! For those bingo lovers we will be holding our Easter bingo again on the 1st April at Lewdown village hall eyes down 8pm. In December 4 members gave ballroom dancing a go as part of the Tarka team ,



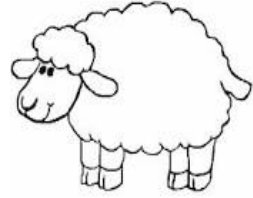
several members also had a go at wreath making and had a lovely Christmas meal by the Clovelly inn. We have got lots planned for the coming months so keep your eyes peeled!



# Thrushelton Church

## Wool Project

2019



Here we are at the beginning of 2019 and very many dedicated people have been working on our project, on and off, for about 2½ years. So we will start by saying thank you!! Next, we need to wonder how far we can get with the project this year?

Later on, in August, there is a wedding in the church. That makes 3 weddings, 3 summers in a row – congratulations to the happy couples! It also means we have another deadline for trying to get runners finished. That has to be good – we all work better with a date to focus on. 😊

At present we have:

- 18 finished runners (some still to be backed and to find their way to the church).
- 13 runners at varying stages of completion.
- 8 runners cut out and allocated to volunteers (hopefully you won't change your minds!)
- Just 1 runner still to cut out.

That makes a grand total of 40 runners which includes all the pews, 4 chairs and one runner that will double up as a wall hanging. There is also a plan to try to make a woollen, locker-hooked piece to go under the altar rail.

So we have lots to do and we can still use lots of help.....

We are meeting on Sat. 26<sup>th</sup> Jan. at Janet & Barry Albrighton's house, Liddaton. Please phone 01822 860445 for directions.

We are also planning other get togethers, all are welcome to come and lend a hand or to see what we're doing. Please get in touch for dates and details.

01837 871238 [rosieyells@lineone.net](mailto:rosieyells@lineone.net)

Rosie Yells.



# Lewdown Grouped Parish Council

Coryton, Lewtrenchard, Marystow and Thrushelton

Abbreviated draft minutes of ordinary meeting held at Lewdown Victory Hall

Monday 26<sup>th</sup> November 2018 **No 714**

1. Members of the public open forum – Two members present. A parishioner wished to let it be known if she could answer any questions to one of the planning applications. The other Parishioner wished it be known that there were recently a spate of burglaries in the Lewdown area, parishioners are advised to be more vigilant.
2. Planning appl. Ref.3310/18/FUL – Change of use of land and siting of 2 shepherd huts At Ford Farm, Coryton, EX20 4PG, - Council decision – Support  
Planning appl. Ref.3337/18/OPA – Outline planning permission for 3 dwellings (2 in the grounds of the former car park and 1 in the grounds of existing stables At Royal Exchange Inn, Lewdown EX20 4BX - Council decision – Support
3. Cllr Perkins let it be known that details of the Lewdown Play area scheme could be found in the V.H. There is also a [facebook](#) page search [Lewdown Playground Fundraising Group](#). Contact Nikki Perkins 01566 783606 or email [aceca90@hotmail.com](mailto:aceca90@hotmail.com) Fund raising had started on Saturday 24<sup>th</sup> November with a table top sale in the V.H. that afternoon. £250.59 had been raised after expenses in just a few hours. The next venue is Carol singing event at Lewtrenchard Manor at 3-5.30pm on 16<sup>th</sup> December. On 22<sup>nd</sup> December a children's disco at the V.H has been arranged 5.30-8.00pm.
4. Finance. The RFO report showed a current account balance of £3989.86 and £4696.57 in the deposit account.  
Payments were approved for the following;  
P van Delft – Clerk duties £370.80  
Lewtrenchard PCC – Donation £250.00, Marystow PCC- Donation £250.00  
Coryton PCC - Donation £250.00, Thrushelton PCC- Donation £250.00  
Lewdown Cricket Club - Donation £200.00, Community Newslink – Donation £150.00  
Draft budget 2019-20 – The RFO produced a draft budget and recommended an increase in the precept of 4% to cover the additional costs. It was resolved to approve the draft budget, It was also resolved to approve the precept increase.
5. Wye Road Junction – Highway Safety issues. Cllr Yeo raised the problem that the road markings were worn out thus users are making priority errors. Sat –Nav directions were also contributing to the problem. It was proposed to contact Highways and arrange a site meeting.
6. Correspondence – Citizens Advice had requested a grant/donation for the services it provides. It was resolved to provide a donation of £150 this financial year and £150 for the following year.
7. Items to be included for the next meeting are, Air Ambulance Landing site – official opening including planning for the occasion. Emergency Ready Plan – third draft of the plan to be considered including key roles, contacts, emergency accommodation. Lewtrenchard Primary School – highways update.
8. Date, place and time of next ordinary meeting, 28<sup>th</sup> January 2019, Lewdown V. H, at 7.30pm.  
Meeting closed 9.30pm

Email : [lewdowngpc.clerk@gmail.com](mailto:lewdowngpc.clerk@gmail.com)

Website : [Lewdowngroupedpc.org.uk](http://Lewdowngroupedpc.org.uk)



## CHURCH NEWSLETTER

### Ministers

United Benefice of Lifton, Broadwood, Stowford,  
Lewtrenchard with Thrushelton & Kelly with Bradstone

**The Revd. Nick Law 01822 840229**

**nick123law@gmail.com**

The Rectory, The Down, Bere Alston, PL20 7HQ

Milton Abbot Benefice

**The Revd. Andy Atkins, 01822 870298**

The Vicarage, The Parade, Milton Abbot PL19 0NZ

### Churchwardens

#### Lifton-St Mary's

Mr J Courtice

01566 784562

Mrs G Whitford

01566 784242

#### Broadwood- St Nicholas

Mr D Perkin

01566 776758

#### Kelly with Bradstone-St Mary's

Mr W Kelly

01822 870393

Mr R Eggs

01822 870240

#### Marystowe—St Mary the Virgin

Mrs B Dawe

01566 784797

Mrs D Asbridge

01822 860378

#### Coryton—St Andrews

Mr G. Vicat

01822 820254

Mr R. Searight

01822 860148

#### Stowford—St John the Baptist

Mr C Chick

01566 783223

Mr S Hedger

01566 783765

#### Lewtrenchard—St Peters

Mrs A Westlake

01566 783909

Mr B. Grant

01822 860569

#### Thrushelton—St George

Mr A J Nash

01566 783274

Mr T Nash

01566 783320

### *Roman Catholic Services*

**Tavistock** Sunday 9.15 am  
Holy Days 10am

Fr. Greatbatch 01822 612645  
(P. Sparling 01822 860355)

**Okehampton** Saturday 6pm  
Sunday 11am

Fr M. Darline Joseph  
01837 52229

**Launceston** Sunday 10.00 am  
Holy Days 7.30pm  
Rev. David Annear 01566 773166

### Quakers

Meeting for Worship  
Tavistock every Sunday 10.00am.

4 Canal Road, Tavistock.

Contact – Kay Nicholson

01822 614596

Okehampton

Every Sunday 10.30am.

Children's Meeting 2nd Sunday

Community Centre, Okehampton

Community College, Mill Road,

Okehampton.

Contact - Eleanor Flack 01837 53475

### St. Mary the Virgin, Marystowe

Church services at 9.30am unless otherwise stated

1st Sun. in the month - Holy Communion ● 3rd Sun. in the month - Family Service

# WORSHIP IN THE LIFTON BENEFICE

The Churches of

St.Mary, **Lifton**. St.Nicholas, **Broadwoodwidge**. St.Peter, **Lewtrenchard**  
 St.Mary, **Kelly**. St.John the Baptist, **Stowford**. St.George, **Thrushelton**

**Holy Communion every Wednesday, 10.30am at St.Mary's, Lifton**

**FEBRUARY 2019**

Sunday 3rd	9.30am 9.30am 11.15am 11.15am 11.15am	Holy Communion – Lifton Holy Communion - Thrushelton Songs of Praise – Lewtrenchard Morning Prayer – Stowford Morning Prayer - Kelly
Sunday 10th	10.00am	Benefice Service – Thrushelton
Sunday 17th	9.30am 9.30am 9.30am 11.15am 11.15am	Morning Service – Lifton Morning Prayer - Broadwoodwidge Morning Prayer - Thrushelton Holy Communion – Stowford Morning Prayer - Kelly
Sunday 24th	9.30am 9.30am 11.15am 11.15am	Holy Communion – Broadwoodwidge Holy Communion – Lifton Holy Communion – Lewtrenchard Holy Communion – Kelly

There will be a short service on Wednesdays at 10.30am in Lifton.  
 Note 2nd & 3rd Wednesdays will be Holy Communion.  
 each month in Lifton.

## **Bridestowe Methodist Church**

**Preachers for Feb at 11.00am**

<b>3rd</b>	<b>U S at C E</b>
<b>10th</b>	<b>Rev J Cook</b>
<b>17th</b>	<b>R Down</b>
<b>24th</b>	<b>P Webb</b>

## MARYSTOWE CHURCH

A **Christmas Coffee Morning** was held on Saturday, 1<sup>st</sup> December in the Schoolroom at Marystowe. There were cards, crafts and gifts to buy, a raffle and the Post Office. Coffee, tea, cakes and mince pies were served and thanks to everyone, this was a happy and successful event, which raised £280.87 for church funds.



On Friday, 14<sup>th</sup> December, villagers gathered under their umbrellas, for **Carol Singing**, a glass of mulled wine and mince pies at Hays Park House in Chillaton. Money from the collection was shared between the Salvation Army and the Church.



Following their wedding in Australia, Zara Gallie and Stuart Macqueen, had their marriage blessed at Marystowe on Saturday, 15<sup>th</sup> December. This was a very happy occasion and a small reception was held in the Schoolroom afterwards.

We had two lovely Christmas services, both led by Rev Andy Atkins; the **Crib and Carol service** held on Sunday, 16<sup>th</sup> December at 4.00pm was well attended and enjoyed by everyone; the children enjoyed dressing up and taking part in the service and reading too. Festive refreshments were served afterwards. On **Christmas Eve, the Communion Service** was held at 6.30pm, when again, we had a good number and welcomed many Christmas visitors.

**The Silver Smarties Challenge** continues and so far, has raised £135. Our thanks to everyone for their generosity; some people are on their second or third tube!

**A date for your diary - A Flower Festival is planned** to be held at Marystowe on Saturday and Sunday, 22<sup>nd</sup>-23<sup>rd</sup> June (with setting up on the Friday, 21<sup>st</sup>). The title of the show will be 'An English Country Garden.' If anyone would like to take part, please contact churchwarden, Deborah Asbridge.

We continue to offer second-hand books for sale in the Church and in the Schoolroom. If you have any **books** you have finished with, please let us know. We are happy to arrange to collect them. Call Barbara Dawe on 01566 784797.

Deborah Asbridge

## ST JOHN THE BAPTIST CHURCH, STOWFORD LOOKING BACK AT 2018 & LOOKING FORWARD TO 2019

Looking back at 2018, the death of our vicar the Reverend Tim Deacon has left a big hole in our church community.

In June, we had 'a first' for our church; an evening of **Music & Magic at Hayne Manor**, a stunning venue, Charles & Leonie spoiled us with champagne & canapés and a wonderful time was had by all.

October brought us the **Stowford Sunday Lunch**, a very popular event for the young and not so young of Stowford & Lewdown.

December, a massive thank you for all your help, support & donations for our **Stowford Christmas Tree Festival**, it was a great success and raised £1,350! Greatly helped by a very generous, anonymous donation.

The **Christingles Service** was a delight as ever and very well attended; all proceeds go to the children's society.

On the 16th of December, we had a lovely **Carol Service** headed by the Rev. Stuart Wilson whilst the wonderful organist Kevin Lane accompanied us.

### ***What to look forward to in 2019***

We are thinking of holding a **Jazz Picnic Afternoon** at Stowford House - TBC

April 6, **Antiques Road Show** with prizes & refreshments, hosted by Roger Knowles at Stowford Parish Hall from 12-4 pm - put the date in your diary.

June, we will hold **Stowford Open Gardens** again, this will be on Sunday 16th. With refreshments and a plant sale at Stowford Parish Hall - put the date in your diary.

August, we are hoping that Hayne Mill will host the ever popular **The Great Stowford Duck Race** - TBC

October will hopefully see us having a wonderful **Stowford Sunday lunch** at Lewdown Victory Hall - TBC

**Keep reading the Newslink and look out for our posters  
We look forward to seeing you all & thank you again for your support**

**The PCC of St. John the Baptist Church, Stowford**



## *Lewdown Past*

*The Lewdown and area local history group*

**Stowford Parish Hall**

**Tuesday 19<sup>th</sup> February at 7.30pm**

## **The Gunn Mineral Water Factory, Okehampton**

*an illustrated talk by Rod Martin*

Earthenware bottles from local factories evidently crop up frequently in peoples' gardens and can be bought very cheaply in Tavistock's Pannier Market. There was one behind our (broken) cloam oven. Despite these being so common, I could find no reference to the Gunn factory on the internet so I am dying to find out more about it, and why buying bottled water isn't just a modern trend.

**November meeting: The Real Poldark.** Terry Faull gave a fascinating insight into what life was really like in the west-country's mining communities just over 200 years ago when the Poldark novels were set. Winston Graham's books are based on his extensive knowledge of Cornish mining and life in general then but Terry gave us even more background. The landowners of the time often reaped huge revenues from mines developed on their land, taking a percentage of all profits. The Duke of Bedford made millions from the Devon Great Consols mines in the Tamar Valley without ever visiting them. This was also the time of an emerging class of 'new money' like that of the Warleggans and also a time of banks failing (what's new?) as did Pascoe's. And of course, the vast majority of workers had to put up with poorly paid and uncertain work, living in crowded hovels.

We try to inform members of any alterations but visitors may like to phone 01566 783396 nearer the time, to check there has not been a rare change of programme, or for further information. Charge £2 for members, £3 for non-members to include refreshments.



# Lamerton Quilt Exhibition



Friday 1<sup>st</sup> & Saturday 2<sup>nd</sup>  
March 2019

St Peter's Church  
Lamerton, PL19 8QR

Open 11am - 4pm

Free Admission & Parking

Refreshments & Raffle

Proceeds divided between St Peter's Church  
Brain Tumour Research Campaign & Motor Neurone Disease Association

For further information contact Rosalind Wiggins 01822 612440



**CARPENTRY & JOINERY**  
**MARK CHIVERS - SOLE TRADER**

**HIGHLY SKILLED CARPENTER WITH OVER "38 YEARS" EXPERIENCE**  
**"NO JOB IS TOO SMALL"**

**FREE ESTIMATES PROVIDED - NO OBLIGATION**

**PLEASE CONTACT ME WITH ANY ENQUIRIES!**  
**Telephone: 01566 783743 Mobile: 0780 410 4812**  
**EMAIL: [M.C.CARPENTRY@OUTLOOK.COM](mailto:M.C.CARPENTRY@OUTLOOK.COM)**

## Stove & Chimney Specialists

Visit our Showroom at Red Post, Nr Bude, Cornwall. EX23 9NW

Supply and install woodburners & multi-fuel stoves

- Gas & Electric stoves
- Fire places & surrounds
- Chimney flues & linings
- Laying slate hearths & oak beams
- Chimney stack rebuilds & repairs
- Fireplace renovations
- Showroom with live working stoves

Showroom Opening Hours:

Mon-Fri 9am until 4pm

Saturday 9am until 2pm

Call us now for a FREE  
no obligation quote on:

**01288 381 852**



Website: [www.cblstoves.co.uk](http://www.cblstoves.co.uk)  
Email: [carl@cblstoves.co.uk](mailto:carl@cblstoves.co.uk)



# HARDWOOD LOGS FOR SALE BARN STORED / SEASONED

CUT & SPLIT TO YOUR REQUIREMENTS

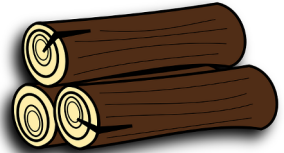
£50 LOAD—£250 LOADS

FREE LOCAL DELIVERY

CONTACT STEVE PEARSE

FOR MORE DETAILS

07989 555141 - 01566 783718



## **ROGER WONNACOTT** GROUND & GARDEN MAINTENANCE

- ▲ GENERAL GARDEN MAINTENANCE
- ▲ SERVICES RENEWED & REPLACED
- ▲ LEAK REPAIRS & TROUBLESHOOTING
- ▲ MOLE / GRUNDOMAT WORK UNDERTAKEN
- ▲ MOLE & COMPRESSOR AVAILABLE



- ▲ COMPLETE JOB PRICING OR HOURLY RATES
- ▲ FULLY INSURED & BASED NEAR LAUNCESTON

**07919 912776**

rwonnacott@hotmail.com

### **John Burrows Boiler Services**

**Commissioning, Servicing and  
Breakdown Engineer**

**for**

**Domestic Oil Fired Appliances**

**AGA Rayburn Grant Trained  
OFTEC Reg No C9888**

**Tel: 01822 810494  
and 07782345395**

E-Mail:

[John\\_campbellburrows@icloud.com](mailto:John_campbellburrows@icloud.com)

Gill House, North Brentor,  
Tavistock, Devon PL19 0LR

Special Rates for the Elderly

**FUND RAISING FOR  
"HELP FOR HEROES"**

# Stowford Parish Council



## Minutes of ordinary meeting held on Tuesday 13<sup>th</sup> November 2018 7.30pm at Stowford Parish Hall.

### 1. Finance

1.1. Report from R.F.O. was circulated to councillors, a current projected balance after the payments have been made showed a credit balance of £5533.75

1.2 Confirmation from Lloyds bank had been received that previous councillors had been removed.

1.3 Payments were authorised for the following;

Clerk salary – Peter van Delft (September – October)	£206.00
Vision Ict – Webiste hosting	£150.00
Stowford PCC – Graveyard grass cutting maintenance (donation)	£200.00
Community Newslink – (donation towards printing costs)	£ 30.00
Okehampton District Com. Bus service (donation)	£ 30.00
Lewtrenchard Primary School – donation	£ 50.00
Community First Insurance – annual council insurance fee	£186.63

1.4 Review of a quotation for repairs to both bus shelters provided by A.J. Nash for the sum of £300 including VAT. It was resolved to accept the quotation, Cllr Dunn proposed, Cllr Bones seconded. Cllr Hennessey declared an interest thus did not comment or vote.

1.5 Draft budget 2019-2020. A detailed summary of predicted expenditure and receipts were provided to councillors. Increases in expenditure had been calculated at 3% in line with current inflation. Two additional expenses had been identified, Parish and Borough council elections of up to £800 and £300 for repairs and maintenance to the bus stops. It was resolved that in future money would be set aside for these expenses at £200 per annum for council elections and £75pa for general repairs and maintenance (subject to increase/decrease). The Precept was debated, whilst the council had refrained from increasing the Precept for several years it was now felt necessary to increase the Precept by 9% for the financial year 2019-2020 to ensure the council could maintain its service. It was resolved to approve the recommendation, Cllr Dunn proposed and Cllr Hennessey seconded.

### 2. Reports from Councillors Cllr Bones attended the Armistice commemoration at Lifton St Marys Church on Sunday 11<sup>th</sup> November and presented the Parish's wreath in honour to the fallen Hero's of the Great War and WW11, they are;

Hedley Samuel Gerry  
Francis Wollocombe  
M.K.A. Lloyd  
Wilfred Took  
Edwin Reddicliffe  
George Medland  
Leopold Edwin Chick  
William Henry Ball  
David Dennis

### 3. Report from Cllr Edmonds The consultation on modification to the Joint Local Plan WDBC, Plymouth and SHDC had gone through examination. No changes affected Stowford Parish. Public consultation was taking place now and would conclude on 3<sup>rd</sup> December. Cllr Edmonds had raised the issues of

4. waste collections regarding poor handling and spillage with the contractors for WDBC. The council has since noticed an improvement in the standard of work and thanked Cllr Edmonds for his involvement. The drain issues at Part Barton, Stowford had been superficially repaired. An underlining problem still existed and required a clearing of the drain system below the property. Cllr Dunn suggested a site meeting with highways to agree an action plan. Clerk to arrange.
5. Recreation Ground Cllr Dunn had contacted a solicitor to enquire what costs would be incurred for contacting Mr Canfield and requesting the return of council documents that he had in his possession. A quote of £500 plus vat from Tozers Solicitors (as recommended by DALC) had been received for the work. It was resolved that this cost was too great, the council would not continue to pursue this course of action further. After discussion, it was resolved that Cllr Bones would contact former Cllr Duttson who was also secretary to the Trust for the Recreation Ground to enquire what, or if any information he has or knows of that could prove useful to help the council.
6. Correspondence A request for a donation had been received from Citizens Advice. It was resolved to donate £100 in the year 2019 2020 and to remove the donation to Okehampton District Comm. Bus service because it had been identified that the service no longer operated in the Parish.
7. Items for consideration for the next meeting Cllr Bones produced a MABRAKE pamphlet that she received. Mabrake was proposing expanding the TVAONB to include the Tavistock-Lifton-Sourton triangle. Details can be found on <http://mabrake.com>
8. Date and Time of next meeting 8<sup>th</sup> January 2019, 7.30 at Stowford Parish Council

Mr Peter van Delft, Stowford Parish Clerk  
Portgate Chapel, Lewdown,  
Okehampton, Devon, EX20 4PZ

Email : [stowfordclerk@gmail.com](mailto:stowfordclerk@gmail.com)  
Tel: 01566 783023  
[www.stowfordparishcouncil.org.co.uk](http://www.stowfordparishcouncil.org.co.uk)

# LEWDOWN VICTORY HALL

Registered Charity No 230270

## SUNDAY LUNCH

**February 24<sup>th</sup> at 12.30  
for 1.00pm**

**TICKETS £12.50**

Andy / Sarah 01566 783274 or Nicola 783320

# TJS fencing contractors

Friendly reliable service,  
competitive rates

post and rail, stock netting,  
agricultural maintenance.

All to a high standard  
No job too small  
07832 187057



## Tim Dixon

**Domestic Plumbing  
&  
Home Improvements**

**01566 784028  
07903535881**

careful & reliable service  
*Bathroom and shower installation  
Tiling  
General home maintenance  
& repair*

## Roger's Painting & Decorating Services

Interior & Exterior Work  
Traditional & Modern Techniques  
City & Guilds Qualified  
25 years Experience



Mobile: 07783 819171  
Tel: 01566 784170

# GRAHAM TOWNSEND GROUNDWORKS

**WATER DRAINAGE & GROUNDWORK SPECIALISTS**

**WATER LEAKS & RENEWALS**

**DRAINS CLEARED**

**GROUNDWORKS**

**TREATMENT PLANT**

**DRAINS REPLACED**

**ALL FENCING WORK**

**MOLING (No Dig)**

**DEMOLITION**

**PATIOS DRIVES**

**SEPTIC TANKS INSTALLED**

**FREE ESTIMATES**

**TEL: 01837 657687 / 01566 783788**

**MOBILE: 07866 465093**

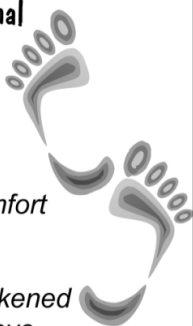
**email: [info@gtownsendgroundworks.com](mailto:info@gtownsendgroundworks.com)**

## **Mobile Foot Care**

*Sally Isaac S.A.C. Dip. FHPT/FHPP*

**Gentle and professional  
foot care in the  
comfort of your  
own home**

*If you suffer discomfort  
from corns, callus,  
ingrown toenails,  
cracked heels, thickened  
nails, etc. or just have  
difficulty cutting your toenails  
give me a ring*



**Telephone Sally  
07961 076 168**

**WELCOME TO  
LOBHILL FARMHOUSE  
BED AND BREAKFAST  
and HOLIDAY COTTAGE**

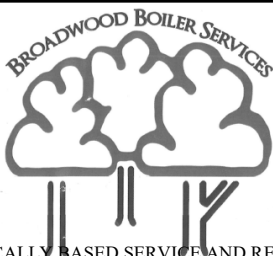


*Lobhill Farmhouse, Lewdown,  
EX20 4DT*

*Tel: 01566 783542  
0781 724 4687*

*Jane Colwill*

*[www.lobhillbedandbreakfast.co.uk](http://www.lobhillbedandbreakfast.co.uk)*



A LOCALLY BASED SERVICE AND REPAIR  
COMPANY FOR OIL FIRED HEATING/COOKING  
APPLIANCES.

MARK WOULD BE PLEASED TO OFFER  
COMPETITIVE PRICES FOR A QUALITY SERVICE.  
DISCOUNTS ARE AVAILABLE: PLEASE ENQUIRE

- ◇ BASIC BOILER SERVICE     £60
- ◇ BASIC COOKER SERVICE    £70

**PLUS THE ADDED BONUS OF NO VAT TO PAY!**

SO GRAB A BARGAIN SERVICE FOR YOUR BOILER OR  
COOKER BY CALLING:

**MARK ON 07814 976 076**

BROADWOODWIDGERBOILERSERVICE@GMAIL.COM

# PLUMBER

## EST 30 Years

### Lewdown & District

**Tel: 01566 783562**

**Mobile: 07984 812807**

## **OIL BOILERS** Breakdown Servicing Replacement

Genuine 24 hr service - Lots of common parts in stock!

## **OIL TANKS** Replacement Relocation New Installations

Real emergency service – we can pump out a leaky tank to one of our temporary tanks  
and we can connect it up to your system – hows that for a problem sorted!

## **PLUMBING & HEATING** As well as our renowned 24 hour

Emergency Plumber service we also carry out 'normal' plumbing and heating jobs –  
just ask!

**01566 783471            07596 997207**

**07599 078 805**

R & S McNamara, Lewdown, Devon EX20 4PT    Retained Contractors to all of the major insurers

OFTEC Reg C12274

[www.emergencyplumbersouthwest.co.uk](http://www.emergencyplumbersouthwest.co.uk)



For **Dogs & Cats** **Raw Meat Animal Feed**  
Convenient (400g blocks) *Frozen to preserve*

**Natural, just meat or meat and bone**

**No Preservatives, No Artificial Colouring's**  
*(both can be harmful to your animal)*

For information or to order



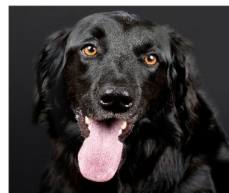
# Raw Rations Plus

website: [www.rawrationsplus.co.uk](http://www.rawrationsplus.co.uk)

Phone: 07831309666

Email: [sales@rawrationsplus.co.uk](mailto:sales@rawrationsplus.co.uk)

Post: Fairview Bungalow, Lewdown,  
Okehampton, Devon EX20 4DL



# Julie's

## Catering Van

**HOSPITALITY WITH A HUG**

**Available for your event**

**Contact 07572412421**

**Pulled Pork, Bacon, Sausages,  
Burgers, Chicken Curry, chips,**

**Hot & Cold Drinks. Homemade Cakes  
and Cream Teas in season.**

**Happy to discuss with customers just  
ring me or find me on Facebook**



### Lakeside, Roadford Lake

Open 7 days a week

Please see website for seasonal opening  
times

Café Gift Shop Sunday Carvery  
Weddings Conferences Events  
Walks Cycling  
Children's Play Area

Call 01566 784859

[www.swlakestrust.org.uk](http://www.swlakestrust.org.uk)

Wanted to purchase

Medals - Watches - Coins

Expert advice given on Auctions/Probate/Insurance etc.



Contact Roger Knowles

Telephone 07763 792195 (Evenings)

## *Andyman Appliance Repairs*

*Washer, Tumble or Electric Cooker*

*Not well*

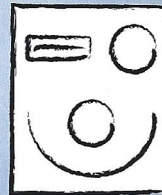
*Call 07927 015360*

*For A Fast Friendly Service*

*Over 25 Years Experience*

*No Job To Small Or Big*

*All Work Guaranteed*



## **A. J. NASH BUILDERS LTD.**

**Andy Nash**

**General Builder & Decorator**

Anvil Cottage

Lewdown

Okehampton

07769728425

01566 783274

sarahnash@btinternet.com



# Stacey

## Rural Business Administration

### BOOKKEEPING & VAT RETURNS

to trial balance using QuickBooks Online, Making Tax Digital compliance

### FARM RECORD KEEPING

all cattle & sheep records, movement reporting, vet & med records

### WATER REGULATIONS

records, maps & compliance

### FARM ASSURANCE

records, maps, compliance & inspection assistance

### BASIC PAYMENT SCHEME

applications, mapping changes, Young Farmer/ New Entrant applications, Entitlement Trading

### WASTE EXEMPTIONS

registrations

### STEWARDSHIP APPLICATIONS

Mid Tier, Water Capital Grants, Productivity Small Grant, Hedgerow & Boundary Grant

### PAYROLL

weekly or monthly with payslips & end of year returns

### GRAZING LICENCES

**Fiona Stacey**

Tel: 07870 632395 / 01566 783418

Email: [fiona@staceyruralbusinessadmin.co.uk](mailto:fiona@staceyruralbusinessadmin.co.uk)

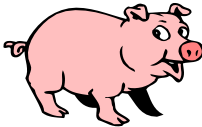


We've partnered with QuickBooks Online  
Ask us for more information



**Fidgits Cleaning Service**  
For all your domestic cleaning needs  
Fully insured. References available.  
Price available on quote  
Telephone 07974496236  
Email: [fidgitscleaning@outlook.com](mailto:fidgitscleaning@outlook.com)

**FOR SALE**



**Pork & Sausages**  
Enquiries Please Contact  
**Colin on 01566 783279**

**The Clovelly Inn**  
Bratton Clovelly



Torben,

Suzy,

Alex & Thomas  
look forward to seeing you  
**01837 871447**

# CANNON BARN PODIATRY & FOOT PAIN CLINIC

Specialists in Lower Limb Musculoskeletal Conditions including:  
Heel Pain | Plantar Fasciitis | Achilles Tendonopathy | Mortons Neuroma

## SWISS DOLORCLAST RADIAL SHOCKWAVE THERAPY CLINIC

General Chiropody & Podiatry Patients very welcome.

*Helping you walk towards pain free...*

Call: 07946 473972

[www.cannonbarnpodiatry.co.uk](http://www.cannonbarnpodiatry.co.uk)

1 Cannon Barn Cottages | Lewdown | Nr Okehampton EX20 4BU



## Broadbury Landcare

All Aspects of Garden Maintenance  
and Landscaping

Fully Qualified Fully Insured Free Estimates  
10 Years Experience

**Andrew Barton** 07532 216216

## A C WORTH BUILDERS



GENERAL BUILDERS, DECORATORS,  
PLUMBING & HEATING,  
PURPOSE MADE JOINERY etc.

BIRCHAM, LEWDOWN, OKEHAMPTON, DEVON EX20 4BU

Email: [acworthbuilders@aol.com](mailto:acworthbuilders@aol.com)



Tel: 01566 783282

Keith: 07778 471648

Andy: 07867 524515





## **T C M Plumbing**

Burst pipes? Tap dripping? Overflow running? Valves Leaking?  
Radiators not getting hot? Gutters blocked or leaking?  
Based locally at Inwardleigh we cover the surrounding areas  
Helping you with your plumbing needs no matter how small

**Contact Tim Morgan on 01837 810599**  
**Or visit our website [www.tcmplumbing.org.uk](http://www.tcmplumbing.org.uk)**  
**to see what we can do for you**

## **BODYMAINTENANCE.CO.UK**

**Sports massage, injury & pain clinic**

**Launceston - Okehampton**

**Highly experienced in providing effective treatments for acute, chronic, radiating and referred pain, strains & sprains. Free consultation and advice available.**

Please contact Clive Lacey on ...

**01566 783609 / 07747112019**

Or email - [clivelacey@bodymaintenance.co.uk](mailto:clivelacey@bodymaintenance.co.uk)

Further info - [www.bodymaintenance.co.uk](http://www.bodymaintenance.co.uk)

## **J.D. HALL** **CARPENTER AND JOINER** **(OVER 30 YEARS EXPERIENCE.)**

**FOR ALL YOUR WOODWORKING NEEDS**  
**CALL 01566 783566 OR 07881 752822**  
**[www.jdhalloakconstruction.co.uk](http://www.jdhalloakconstruction.co.uk)**

# Gardeners



Enjoy the Winners Circle  
For that champion veg  
Collect your own FREE



Proper Well Rotted  
*The Only Local Source of  
Pedigree Fell Pony Plops*

01566 783471

Free Bags Available!  
Trailers welcome!



## SWIFT GHIMNEY SWEEP



CONTACT STEVE

01566 783435

07890467406

- Brush and vac
- Certificate issued
- Your local friendly sweep

## Septic Tanks

### Emptied

Phone: 01805 601286

Mobile: 07831241531

Leave a message, we will  
return your call, or email:

[Peter@peterhearnwaste.co.uk](mailto:Peter@peterhearnwaste.co.uk)

Small Lorry  
Available

Card payment accepted

**Peter Hearn  
Haulage Ltd**

# Tavy Turf

Pete Badge  
01822 610998  
07980564175

## Growing & Supplying

Turf, Topsoil & Compost

Acres of weed treated turf all ready to be cut.

All turf is cut fresh then supplied direct to your drive.

Topsoil and Compost dry stored

## Landscaping & Laying

Years of experience in clearing, planning, landscaping lawns & laying turf.

Diggers, Stone Buriers, levellers & graders

## Grass Cutting & Maintaining

Specialists in maintaining large lawns & playing fields.

Grass Cutting, Collecting, Disposal & Mulching.

Vegetation Clearance.

We only grow professional turf & use specialist machinery

## TOP SOIL

TOP QUALITY TOP SOIL FOR SALE

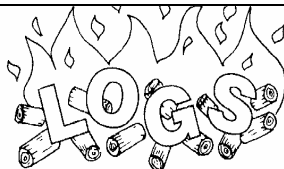
SEA SAND · ROAD PLANINGS

VARIOUS DECORATIVE GRAVEL CHIPPINGS & BUILDING AGGREGATES

NO VAT

01566 784645 OR 07771 823414

**Adrian Davey**  
**Painter and Decorator**  
Over 30 years experience  
Friendly and reliable service  
**01566 780 477**



supplier of

**HARDWOOD LOGS**

*Cut & Split to your requirements*

Tel. Colin Bennett: 01566 783514

**EMERGENCY NUMBERS**  
**FIRE, POLICE, AMBULANCE**

**999**

*For all other information and contact  
with Police stations call 101*

**Your local police contact for  
Lewdown. Chillaton. Stowford Lifton  
area is -  
PCSO SEONIAD GREENWOOD**

**Please contact via 101**

**For Neighbourhood & Farm Watches  
and crime prevention advice**

**For HORSE WATCH  
Gina. 01837 840716**

**Floodline** 0345 988 1188

**Parish Clerks**

Lewdown Grouped

Peter van Delft 01566 783023  
lewdownnpc.clerk@gmail.com  
[www.lewdowngroupedpc.org.uk](http://www.lewdowngroupedpc.org.uk)

Milton Abbot Grouped

Shane Honey 01822 840454  
shanehoney7@hotmail.com  
[www.magpc.co.uk](http://www.magpc.co.uk)

Stowford

Peter van Delft 01566 783023  
stowfordclerk@gmail.com  
[www.stowfordparishcouncil.org.uk](http://www.stowfordparishcouncil.org.uk)

**West Devon M.P.**

Geoffrey Cox M.P. 01822 612925

**County Councillor**

Kevin Ball 07870 377879

**Borough Councillors**

Milton Ford Ward

Mr Bob Baldwin 01822 611289

Bridestowe Ward

John Hockridge 01837 861221

Caroline Mott 01837 861212

Tamarside Ward

Chris Edmonds 01566 784794

**SCHOOLS**

Lewtrenchard 01566 783273

Lifton 01566 784288

Milton Abbott 01822 870273

**COLLEGES**

Tavistock 01822 614231

Okehampton 01837 650910

Launceston 01566 772468 / 773918

**RING AND RIDE SCHEME**

Okehampton Area 01837 55000

Tavistock Area 01822 618028

**COMMUNITY GROUPS**

Cricket Club 07847111330

Chillaton Football Club 01822 860476

Lamerton Pony Club 01822 860350

Lewdown Past 01566 783396

Lewdown Residents Assn 01566 783320

Lewtrenchard W.I. 01566 784104

Lifton Benefice Churches

The Revd. Nick Law 01822 840229

Lifton Surgery 01566 784788 or 111

Red Spider Company 01566 783505

Recreation Field 01566 783367

Stowford Hall 01566 783223

Victory Hall 01566 783267

Youth Cricket 07847111330

Young Farmers 07531 286011

**ADVICE HELPLINES**

Citizen's Advice Bureau 08444 111444

West Devon Women's Aid 0183755228

Age Concern 01752 665424

Health Info Line 0800 665544

Homelessness Trust 01822 615259

Parentline 0800 8002222

Relate 01392 275681

Samaritans 08457 909090

Tavistock Area Support Services (TASS)

(Age UK is at TASS) 01822 616958

Transport to Health 01822 617525

Victim Support 01822 820455

Youthwise Okehampton 01837 54004

**SHOP & POST OFFICE**

Copper's Post Office & Stores Lewdown

01566 783218

**Newslink Day**

Come and help put the next Newslink  
together.

**Wednesday 20th Feb. 2019**

**2pm @ Victory Hall**

We would welcome your assistance in  
collating the pages, stapling or folding  
the magazine... and you get a cup of  
tea and a biscuit.